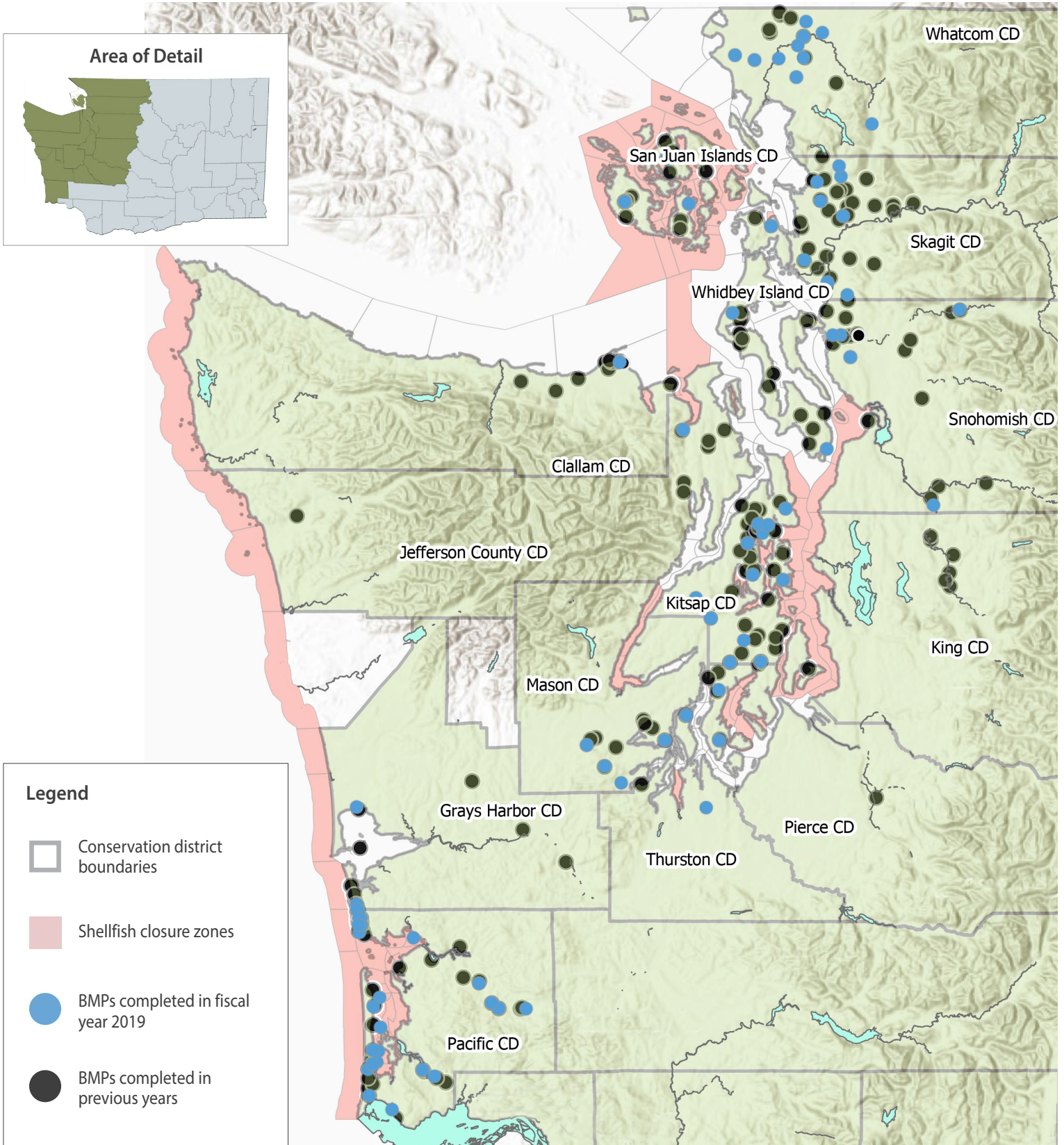


Shellfish Program

Our Shellfish Program uses a targeted approach to invest in best management practices (BMPs) implemented by conservation districts and landowners that build cumulative results for shellfish recovery. Priority is given to “project clusters” within a watershed where there’s a water quality concern.

Funding expended in FY19: \$3.8M





Project site before (top) and after (bottom) Whatcom Conservation District assisted a landowner with installing a heavy use area and watering facility for livestock in order to prevent polluted runoff.



The property is in the Deer Creek Watershed, a tributary to the Nooksack River, which drains to Portage Bay shellfish growing areas.

The District also used Shellfish Program funding to assist the landowner with roof runoff structures, underground outlets, and a covered manure storage facility.



Pacific Conservation District helped lead a multi-partner effort to address erosion at "Washaway Beach" that was on the verge of causing serious damage to drainage infrastructure. The Grayland area and local cranberry bogs were at high-risk for flooding, which would carry pollutants to hundreds of acres of shellfish growing area.



The District used Shellfish Program funding to construct a stone cobble berm, called a dynamic revetment, that protects the shoreline.

Last winter — for the first time in 100 years — no ground was lost at this project site.

Now the District is working to raise the revetment to 21 feet to address climate change predictions and will plant it with native vegetation.



150

best management practices installed



3,021,283

gallons of liquid manure per day safely transferred away from waterways



4,080

square feet of pervious surface installed to filter stormwater



Conservation districts have used Shellfish Program funding for projects that were part of efforts that resulted in the upgrade of thousands of acres of shellfish growing areas in Dungeness Bay, Birch Bay, and Drayton Harbor.

Learn more about the Shellfish Program:
scc.wa.gov/shellfish