



## Seaview

The house that Nick and Jae Major dream about is already standing, rented to tenants for now but waiting for the day they can finally move in. For Nick, it will be a return rather than a new arrival. He spent his teenage years in the old Werneth homestead which once sat a stone's throw from the deck of the house they have built on Werneth Ridge in Atawahi.

"When we discovered the new subdivision of Werneth Ridge in 2005, overlooking my childhood patch, we knew that this was where we wanted to build our retirement home," says Nick.

The Majors knew it would be some time before Jae, who currently works in Australia, was able to live full-time here. So they took their time with the project, choosing an architect in 2007 and starting the build in 2010.

The brief to Arthouse Architecture's Jorgen Andersen was for a single-storey pavilion style home that leveraged the north-west facing site and views across Tasman Bay. Nick says his own interest in architecture meant the brief was comprehensive; he specifically asked for the use of polished concrete and hoop ply in the design.

"I love the semi-industrial feel of the living room with its polished floors and exposed steel beams," he says, "and the dividing space created by the entry gallery with the enormous pivoting main door."

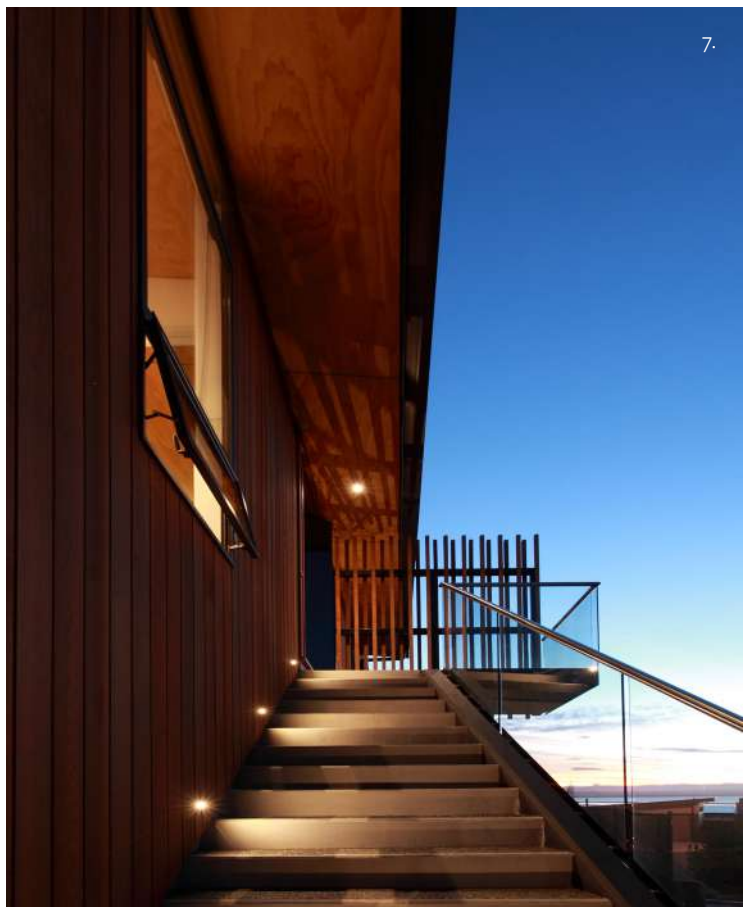
Jorgen's design overlooks Nick's childhood playground to take in the full sweep of the bay, with much of the overall concept dictated by the geotech attributes of the site. A notable change to the original single-storey home was the addition of a garage and workshop under the house – a result of the need to excavate the site to a greater degree than anticipated.

The proximity to the Boulder Bank is acknowledged by stone filled gabion basket retaining walls. The main entry terrace is cantilevered out like a jetty, reached by a staircase from ground level. The entry gallery is a wide dividing space that feels like the space between two tents; the connection between the living space and the surrounding environment continues through to east and west facing covered decks. Sustainability is inherent in the concrete tilt slab panels and floors providing plenty of thermal mass, a solar hot water system with underfloor heating and LED lights.

Nick and Jae's enthusiasm for their future home is obvious. Nick, who spends part of the year in Nelson, has started to create the native garden that he hopes will be a haven for native birds in years to come. "Some of the original plants are now over two metres tall. It's very satisfying and completes the place."

Jae spends less time here but says that she is already anticipating the day they can move into their home.

"I love the ever changing views of the Boulder Bank and the home's simple, uncluttered lines. I'm looking forward to tending the kitchen garden, furnishing the house with eclectic pieces and having friends and family to stay in a place that feels like you're always on holiday."



1. The living room opens out onto a large covered terrace with views over the boulder bank 2. Private terrace from the bedrooms with view towards Nelson and the port 3. Vertical cedar screens the entry platform 4. Gangplank entry platform 5. Terrace wraps around the back of the house connecting to the entry 6. Covered terrace linking to the living room



7. LED lights guide the way to the main door 8. Main entry platform and cedar screen 9. Sitting room that can be closed off from the open plan living and kitchen 10. Owners Jae & Nick 11-12. The original homestead



# Mike Pero

## REAL ESTATE

### Nikki Ryan

**Nikki Ryan** is an expert when it comes to the business of selling property. With eight years real estate experience under her belt, including the set up and ownership of her own agency, Nikki is a consummate professional who takes great pride in the honesty and integrity she brings to her work. She's now working with Mike Pero real estate Nelson, offering a very favourable 2.95% commission rate, which can save you thousands of dollars.

Nikki's strengths include her ability to find a perfect match of people and property; to think outside the square when it comes to negotiations; her great reputation as an ethical agent, and her ability to keep all parties informed and on task throughout the sales and purchase process. She loves helping people buy or sell, at whatever stage of their life they may be in.

Nikki has gathered plenty of industry awards during her career, including No. 1 sales agent in the South Island for New Zealand's largest real estate group, and is a regular in the top 5% of sales agents nationally. She is as comfortable selling a \$1 million plus property as she is selling a \$200,000 starter home, and treats each with the same level of diligence and commitment. She works across all property types (incl lifestyle & commercial) and is a qualified Associate of the Real Estate Institute.

So why should you give Nikki a call? She's supported by a highly professional team. She knows what she's doing and she does it well, saving you time, money and stress. Nikki's experience and industry credibility, along with the excellent commission rate she can offer, means it would be hard to find a better alternative.

### Testimonial

*After buying and selling six houses this has been by far the best experience we have had.*

**- Kevin & Jenny Currie**

# 2.95%

+gst

\*Our fees are 2.95% up to \$390,000  
thereafter 1.95% + admin fee + gst

**Nikki Ryan** AREINZ

03 548 7440

027 253 3793

nikki.ryan@mikepero.com

**www.mikepero.com**

Mike Pero Real Estate Ltd. Licensed REAA (2008)

# Earthquake Stengthening



Kidson Construction has structurally strengthened many commercial and heritage building in Nelson, Marlborough and Canterbury regions.

We are proficient at a variety of techniques to upgrade the seismic performance of a range of structures.

50 years of  
delivering projects  
reliable, proven performance

**KIDSON**  
CONSTRUCTION  
PROVEN PERFORMANCE

3 Kidson Place, Nelson

(03) 547 9619

[www.kidson.co.nz](http://www.kidson.co.nz)



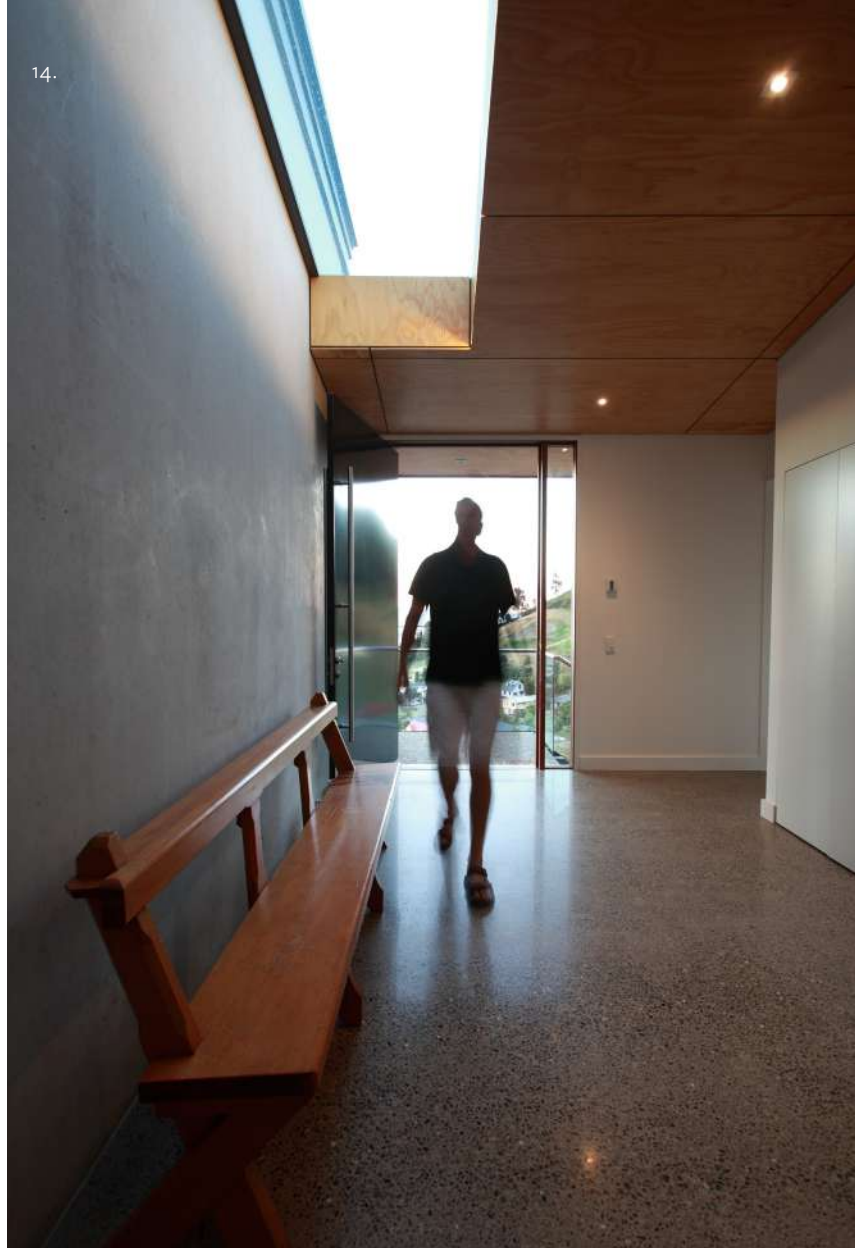
Open 7 Days A Week

The Village Centre, Mapua | 03 540 2799



**Tessa Mae's with Attitude**

Gifts for all occasions from around the world



13. View from the sitting room to the terrace 14. Entry with feature passive solar concrete wall and polished concrete floor 15. Evening view looking over the terrace 16. Entry with oversized black pivoting door 17. Open plan kitchen and living with plywood and acoustic ceiling panels



## Blenheim

44 Seymour St, 7201  
PH: (03) 5787900  
FAX: (03) 5784837  
gbblenheim@paradise.net.nz

## Nelson

45 Vanguard St, 7010  
PH: (03) 5481114  
FAX: (03) 5489980  
gb.nelson@xtra.co.nz

## Motueka

123 High St, 7120  
PH: (03) 5288986  
FAX: (03) 5288100  
gbmotueka@xtra.co.nz

**GB**  
Guthrie Bowron

Curtains, Blinds,  
Wallpaper and Bedding

