

A photograph of a modern beach house interior. The scene is captured from a low angle, looking down a long wooden deck. On the left, a glass railing overlooks a swimming pool and the ocean. In the center, a dining table with wooden chairs is set up. To the right, a kitchen area with white cabinetry and a black countertop is visible. The ceiling is a light, neutral color with recessed lighting. The overall atmosphere is bright and airy, with natural light streaming in from large windows and the open deck.

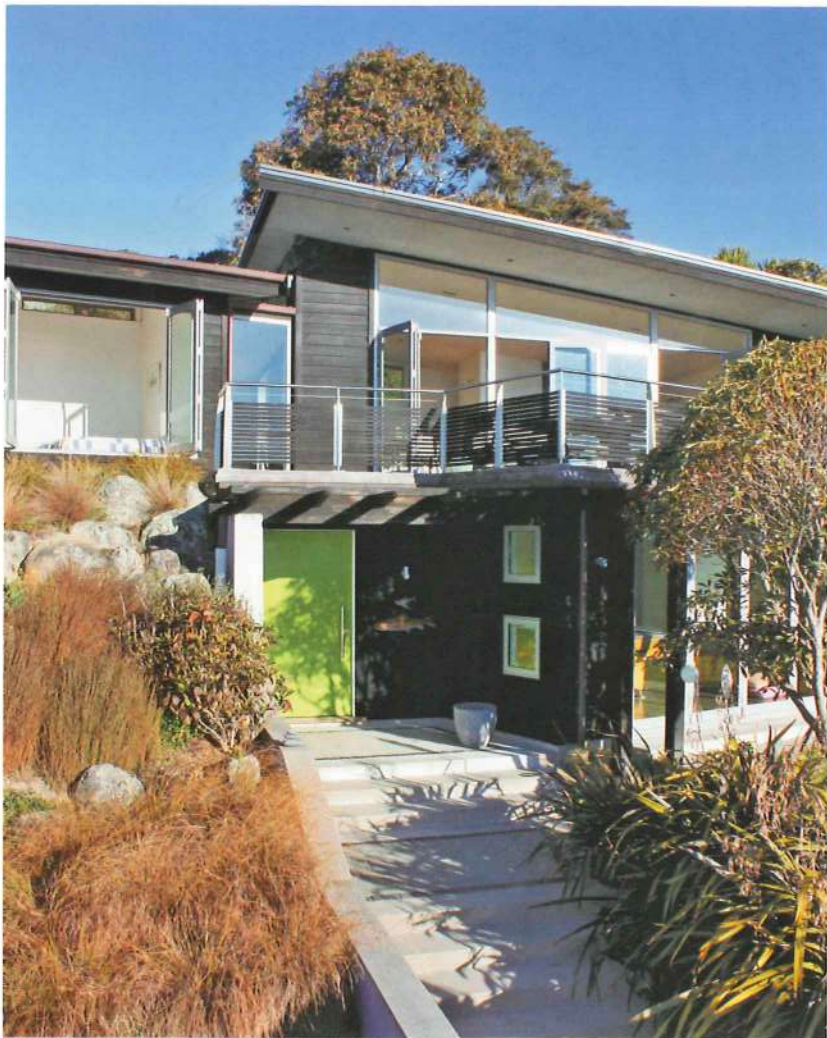
21st Century Beach Houses

Andrew Hall

images
Publishing

Wallace Marshall House

Tahunanui Beach, Nelson, New Zealand
Arthouse Architecture Ltd.



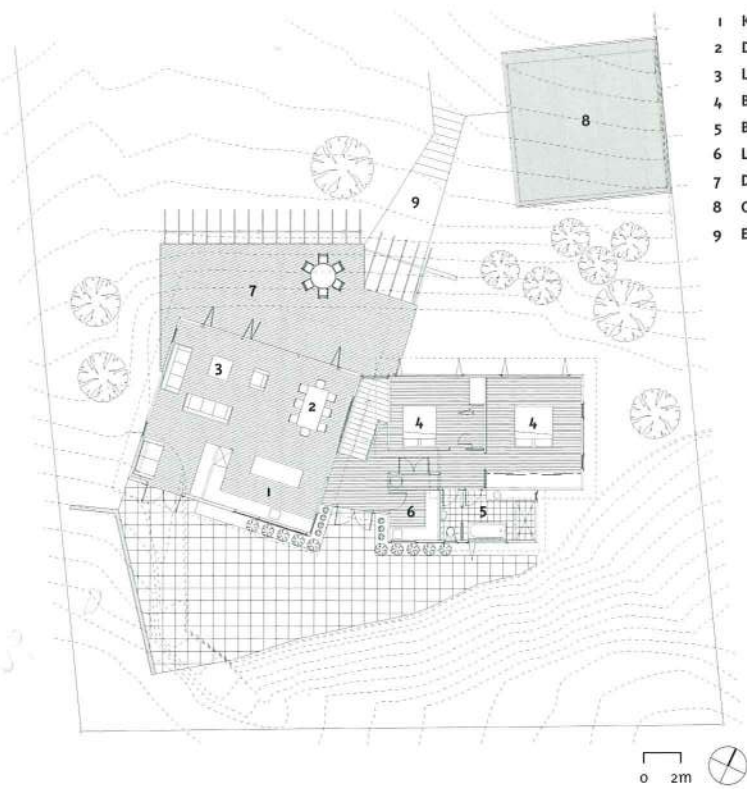
This house encourages a casual, beach lifestyle and was built to allow a relaxed holiday style of living to permeate day-to-day domestic functions. Sited on the hillside, directly across the road from the beach and only ten minutes from the center of town, the house comprises three separate elements—a lower level space for older children and guests, a main living area that opens on to a large deck above the lower level, and a bedroom wing.

Approaching from the beach, three flights of stairs lead up past the garage and outside shower to the bright green front door. The entry and stairs link the three structural elements and accentuate the kink in the plan at the top, where the dominant single-pitched living area twists to face north. The consequent off-square deck, providing generous outdoor living, is oriented toward the beach and across to the western ranges, offering magnificent views.

The low profile and dark-stained exterior of this house belies a spacious and comfortable interior. High windows allow light to flood deep inside the house, where white walls contrast with rich timber, tiles, and polished concrete floors. The house is designed to maximize solar gain in winter with high levels of insulation, while deep overhangs were incorporated to moderate the heat of the summer sun.

Photography by Simon Devitt





- 1 Kitchen
- 2 Dining room
- 3 Living room
- 4 Bedroom
- 5 Bathroom
- 6 Laundry
- 7 Deck
- 8 Garage
- 9 Entry below





Wallace Marshall House