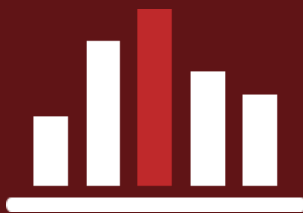




English
Language
Arts



Score Range



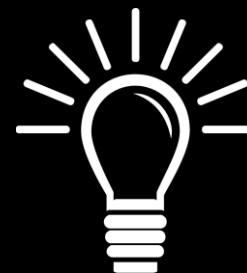
Using NJSLA Results to Inform Instruction

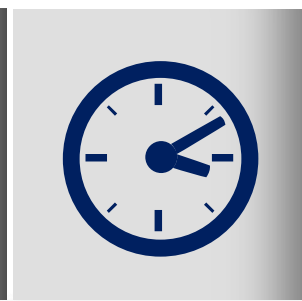
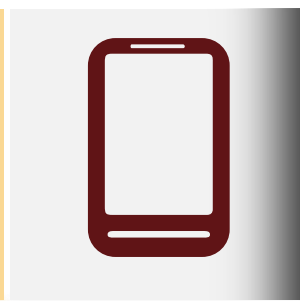


WRITING

Informational
Text

Reading





Overview of Results

- Test Scales
- Averages
- Score Comparisons

Points Categories

- Literary Text
- Info Text
- Vocabulary
- Written Expression
- Language Conventions

Scoring

- EBSRs
- TECRs
- PCRs

Released Samples

- Calibrating Scoring
- Additional Classroom Materials
- Practice Pairing Text

Simulating NJSLA

- EBSRs
- TECRs
- PCRs

Writing RSTs and LATs

- Six-Step Process

Agenda

Item Types and Categories



Research Simulation Task (RST)

For the RST, students are asked to analyze an informational topic presented through several texts or multimedia stimuli. Students engage with the texts by answering a series of questions and writing an analytic response to a prompt, synthesizing information from multiple sources.

Literary Analysis Task (LAT)

For the LAT, students read and analyze two pieces of literature. Types of texts include short stories, novels, poems, or other types of literature. Students write an analytic response to a prompt based on the literary texts.

Narrative Writing Task (NWT)

For the NWT, students read a literary text from a grade-appropriate short story, novel, poem, or other type of literature. Students write a narrative response to a prompt based on this literary text.

Reading and Writing Evidence Tables

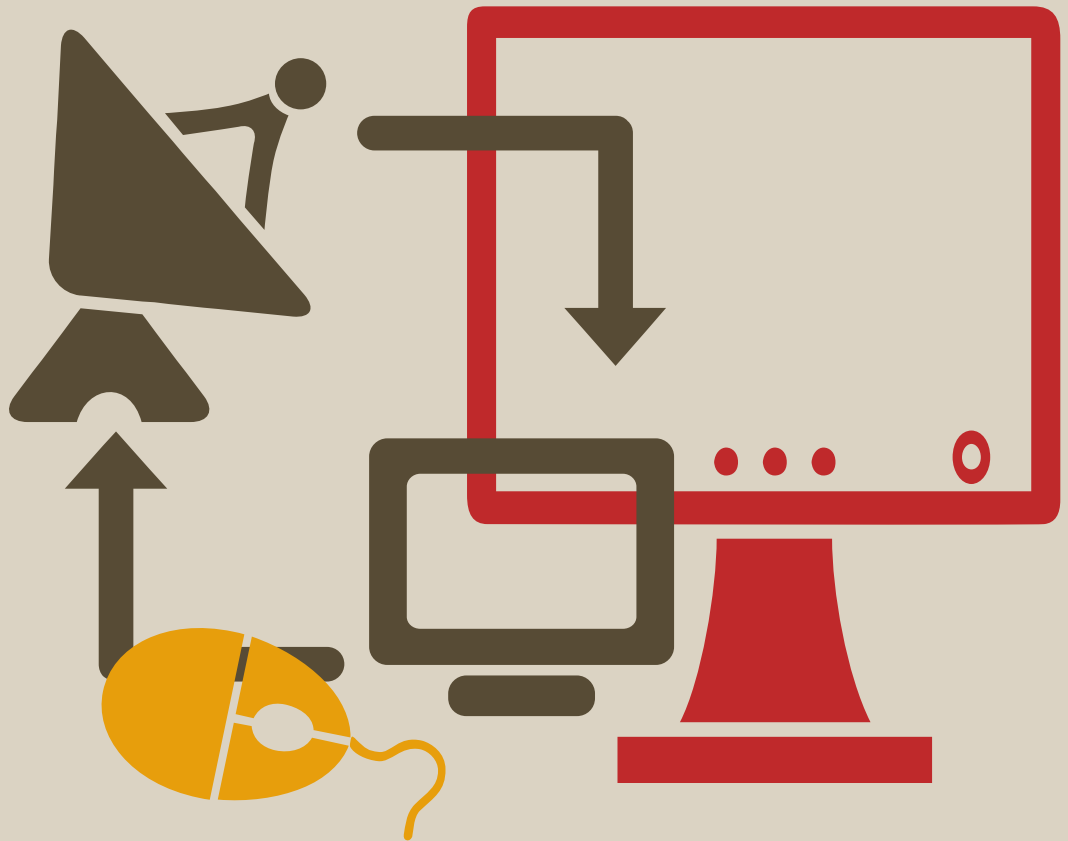
How can your instructors use these documents?

Simulating NJSLA's Construct and Content



Creating TECRs

Let's look at some samples!





6-Step Process for Completing LATs and RSTs

Identify Requirements of Prompt

Write Thesis Statement

Gather Evidence

Construct Outline

Write Essay

Revise and Edit

Questions? More Information?

Inspired Instruction posted a blog series on NJSLA. In this series, we offer tips and strategies you can use to ensure that your students perform at their very best on the NJSLA tests.

The following topics are available to read about on our website:

- 6-Step Process for Writing NJSLAs LATs and RSTs
- Utilizing NJSLA Writing Rubrics - Scoring Student Essays
- Utilizing NJSLA Writing Rubrics - Creating Corrective Instruction Plan
- Be a NJSLA Mathematics Direction Detective
- Aligning NJSLA Math Instructional Practices
- Aligning NJSLA ELA Instructional Practices
- Creating ELA NJSLA Like Assessments - Part 1 EBSRs
- Creating ELA NJSLA Like Assessments - Part 2 TECRs
- Integrating NJSLA Practice – Rethinking Homework
- Gaining a Greater Understanding of NJSLA’s Type I Math Items

Want to Book This Workshop?
Contact Us Today!



**Inspired Instruction, LLC.
Standards Solution Holding**

www.inspiredinstruction.com

196 Belvidere Avenue
Washington, NJ 08722
Phone: 908-223-7570
Fax: 908-223-7570

Michele.Regan@inspiredinstruction.com

Jaclyn.Siano@inspiredinstruction.com