

LOVE



Redhead Hippie

Canvas by
Colors of Praise
Stitch Guide by
Lisa Kessler

Be Stitched
WHERE NEEDLEPOINT MAGIC HAPPENS

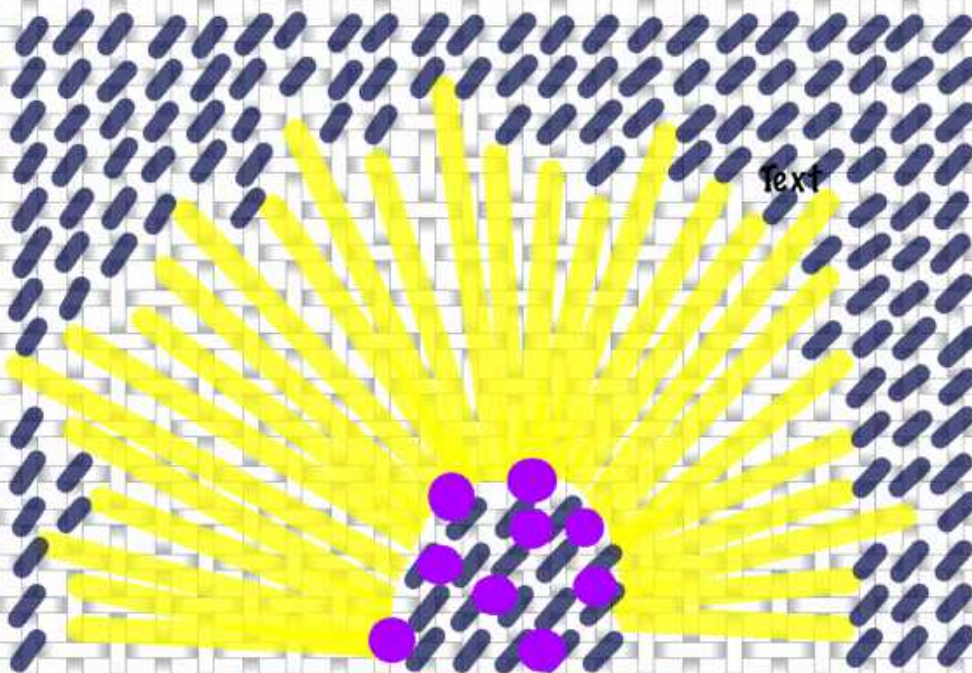
Redheaded Hippie
Canvas by Colors of Praise
Stitch Guide by
Lisa Kessler



Skin - Basketweave using Splendor SS815 and S818 as the paint color indicates. The S815 is used in the like pink cheek areas as we want to be able to "color" over them and "pink" them up with our next lesson.

Redheaded Hippie
Canvas by Colors of Praise
Stitch Guide by
Lisa Kessler

Blue of the Dress - Use Very Velvet V230 to basketweave the blue. Consider going over the round pink areas prior to putting the beads on. This is a choice as you can leave the areas unstitched as the beads will cover completely.



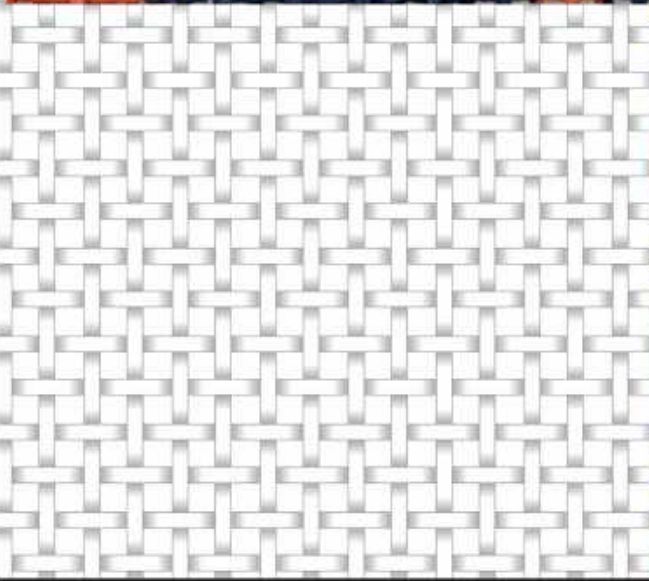
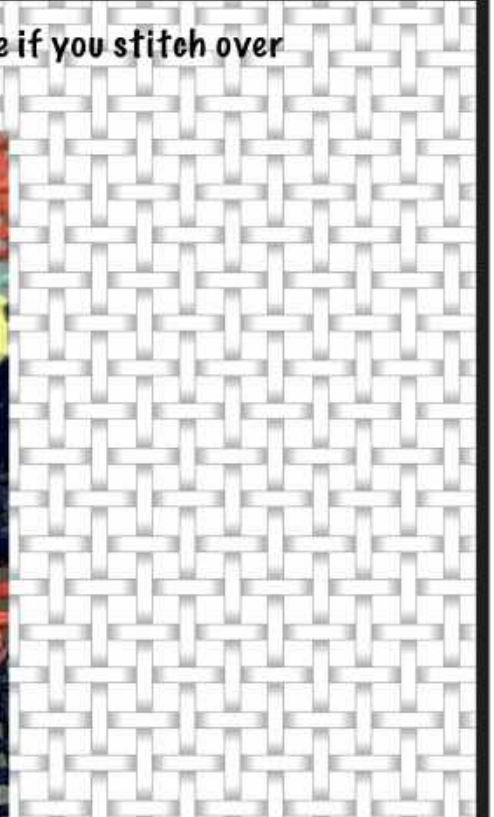
Flowers - Use 7mm River Silks 245 in Satin Stitch as shown in the picture and the diagram. Please notice that there are some holes if you pull too tight. To correct this you can add additional stitches as we will demonstrate in class.



Beads - Use the Firepolished Beads in Metallic Spring Crocus to cover the pink areas or if stitched over completely you will refer to pictures included on the next page.

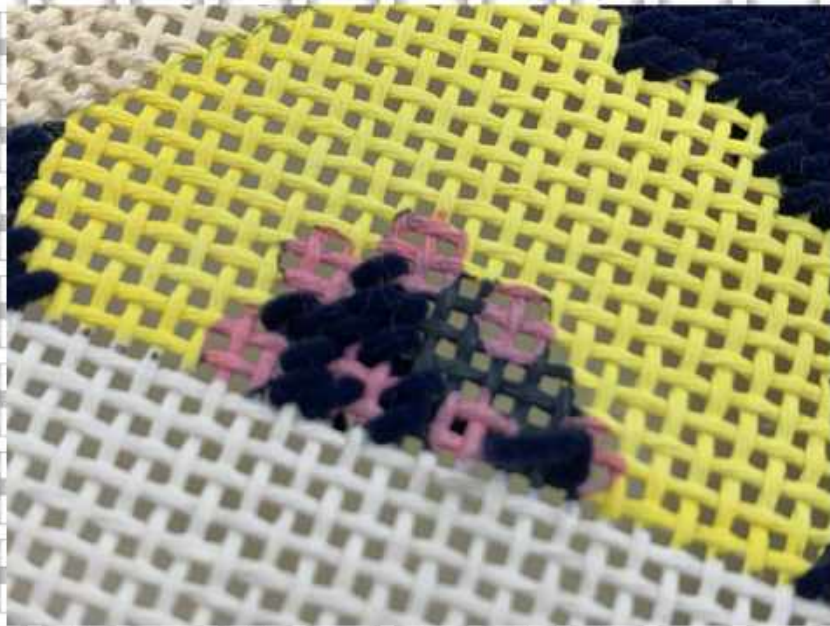
Redheaded Hippie
Canvas by Colors of Praise
Stitch Guide by
Lisa Kessler

Here are pictures of the different pink areas for reference if you stitch over using the Very Velvet.



BeStitched
WHERE NEEDLEPOINT MAGIC HAPPENS

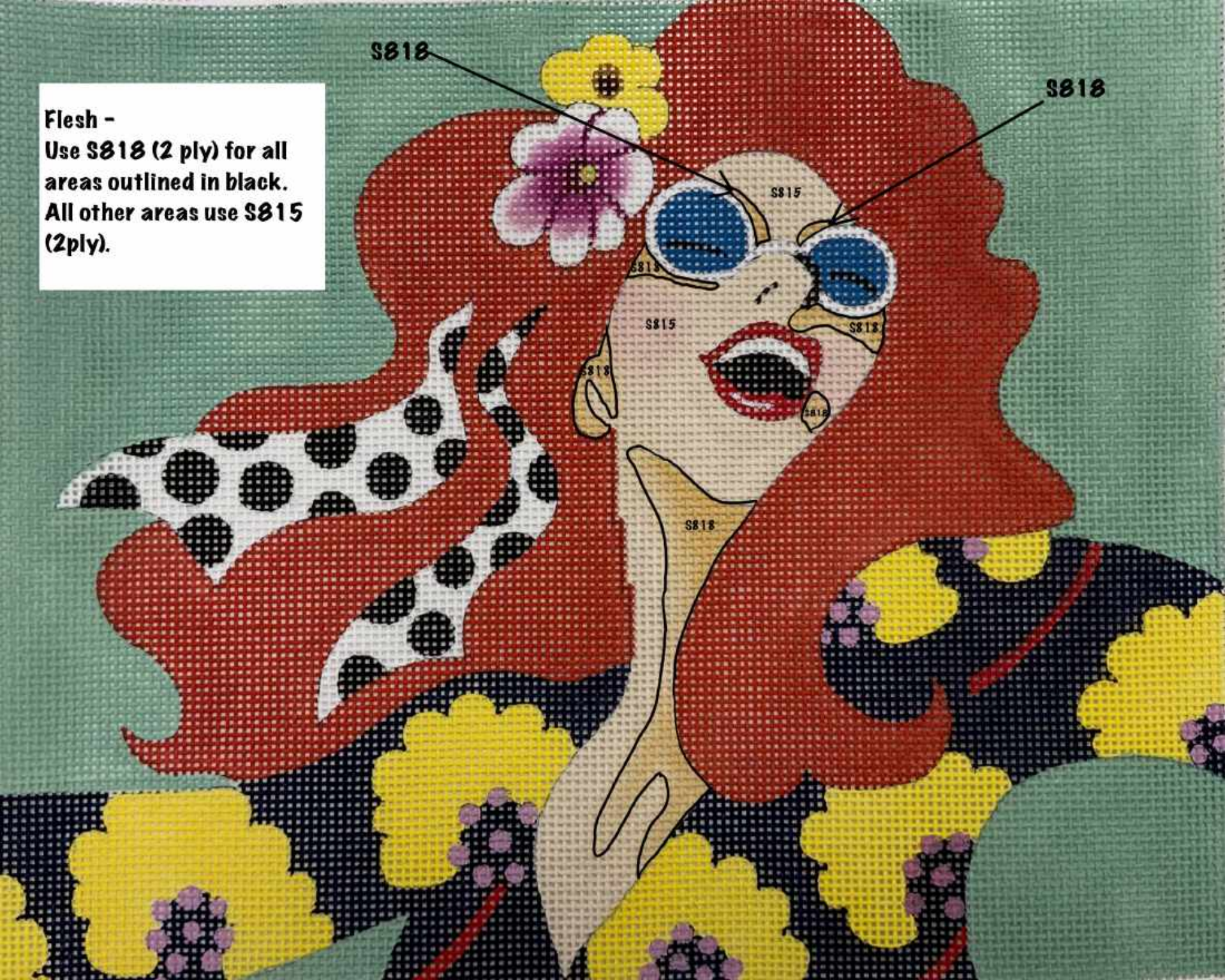
Redheaded Hippie
Canvas by Colors of Praise
Stitch Guide by
Lisa Kessler



More upclose pictures of the areas that can be stitched over for more coverage under the beads.



**Flesh -
Use S818 (2 ply) for all
areas outlined in black.
All other areas use S815
(2ply).**



Ear -

To create more of an ear then stop the layer closest to the ear as diagrammed . This will make the ear look more prominent.

