

Selfie Series

Frosty and Rudolph

Canvas by Rebecca Wood Designs
Stitch Guide by Lisa Kessler



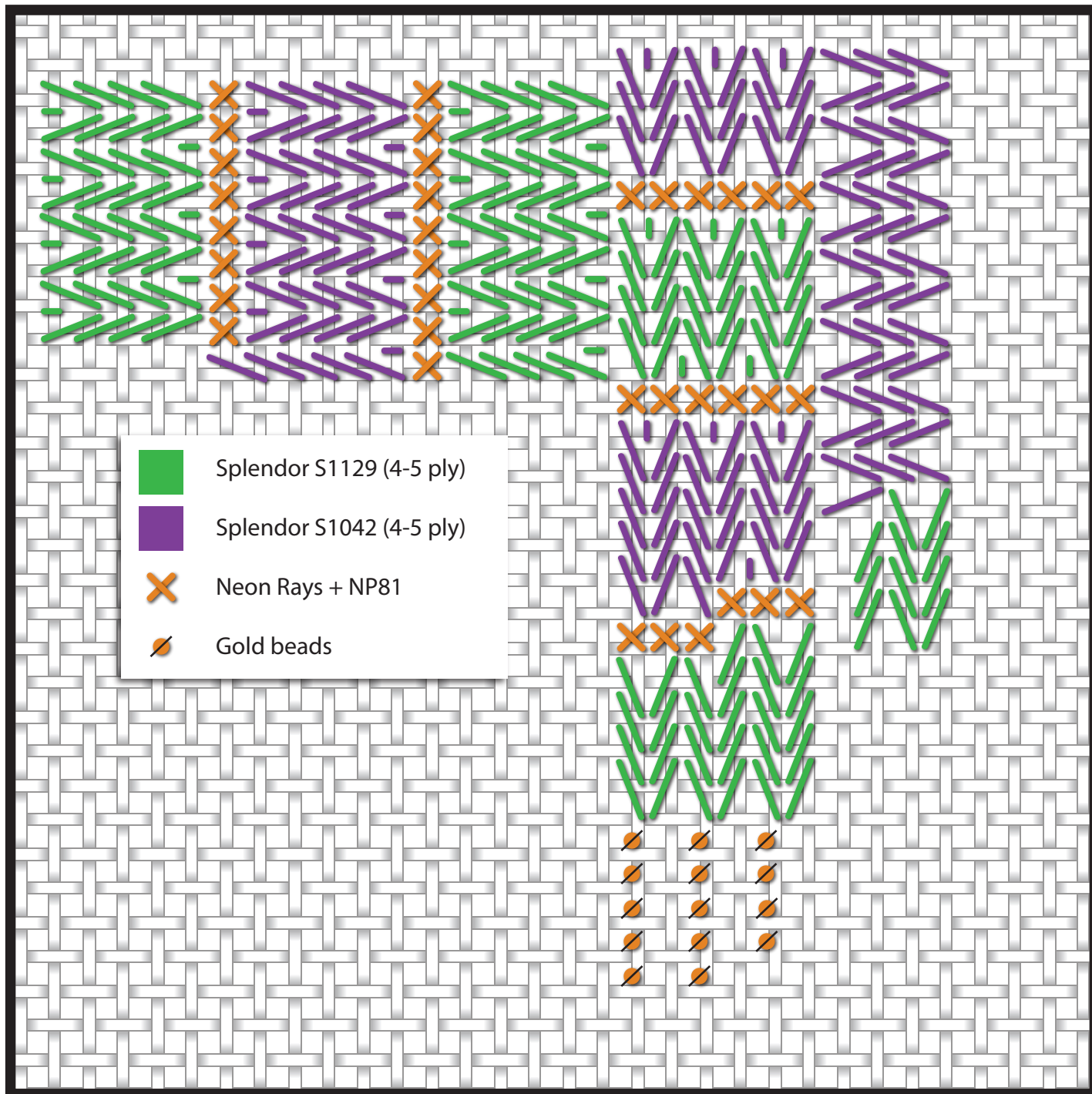


Selfie Series Frosty and Rudolph

Canvas by Rebecca Wood Designs

Stitch Guide by Lisa Kessler

Frosty's Scarf



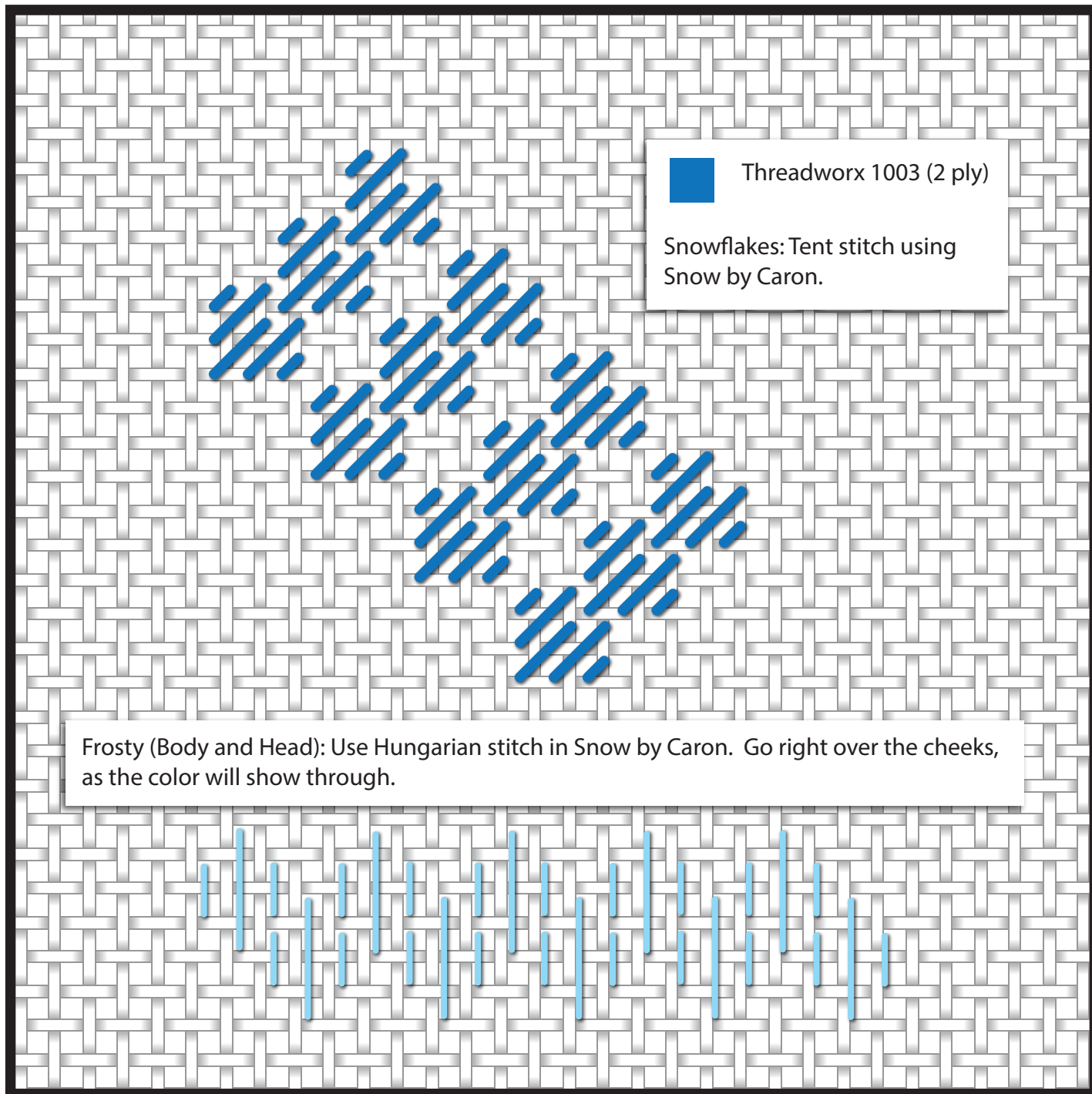


Selfie Series Frosty and Rudolph

Canvas by Rebecca Wood Designs

Stitch Guide by Lisa Kessler

Background





Selfie Series Frosty and Rudolph

Canvas by Rebecca Wood Designs

Stitch Guide by Lisa Kessler

Frosty (continued)

Eyes: Black beads - tent stitch.

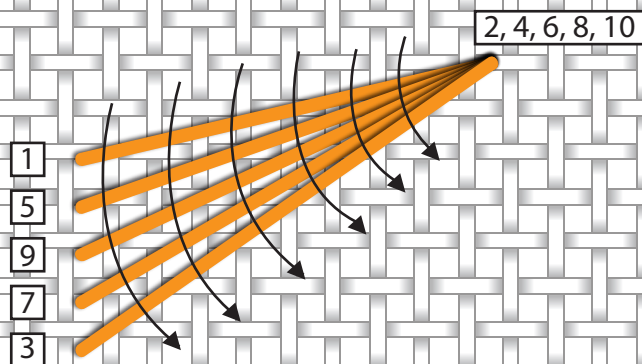
Mouth: Black beads - tent stitch.

Buttons: Black beads - tent stitch.

Teeth: Tent stitch using DMC Floss Blanc (3 ply) and Splendor S801 (2-3 ply) for black areas.

Nose:

Step 1:  Flair F588  1-10



Step 2: Use the Flair to stitch down the arrows.



Selfie Series Frosty and Rudolph

Canvas by Rebecca Wood Designs

Stitch Guide by Lisa Kessler

Rudolph

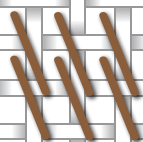
Use the following Bella Lusso in 2-3 ply encroaching gobelin stitch:

412

413

468

485

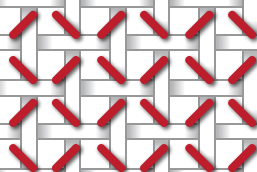


Antlers: Use Rainbow Linen R472 in encroaching gobelin.

Collar/Harness: Tent stitch in Petite Very Velvet V631 and V622.

Bells: Use Neon Rays + NP81 and Splendor S801 in tent stitch.

Nose: Use Silk Lame Braid SL185 and SL186 in alternating continental:





Selfie Series Frosty and Rudolph

Canvas by Rebecca Wood Designs

Stitch Guide by Lisa Kessler

Holly Leaf on Rudolph

Start by using the lighter Flair F607, then use the darker Flair F533 to accent the leaf.



Flair F607



Flair F533

