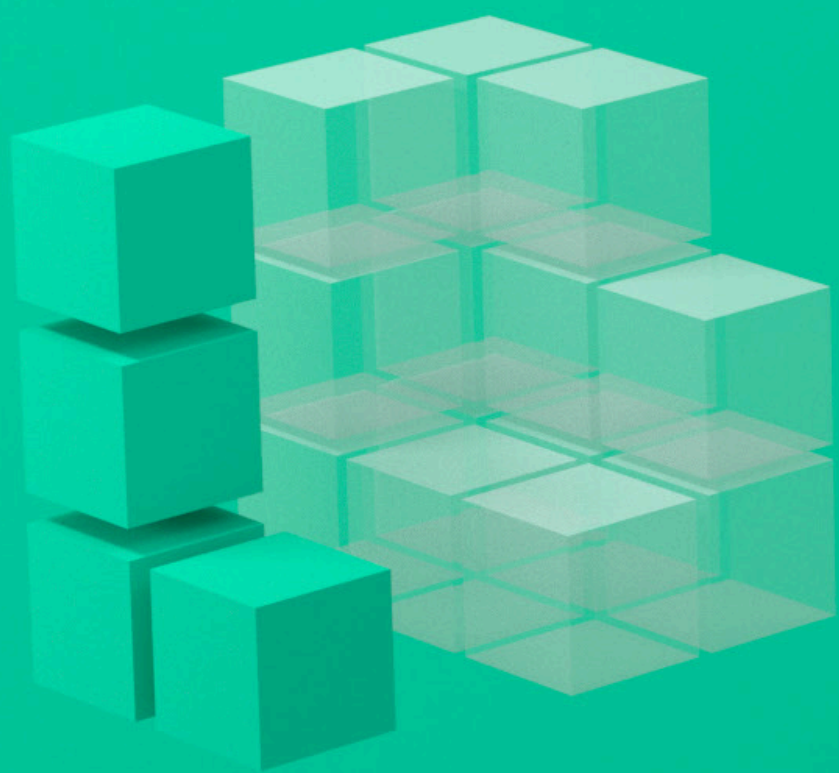


## 02

# Creating a supportive environment



### ***Great teachers create a supportive environment for learning***

A supportive environment is characterised by relationships of trust and respect between students and teachers, and among students. It is one in which students are motivated, supported and challenged and have a positive attitude towards their learning.

**1** Promoting interactions and relationships with all students that are based on mutual respect, care, empathy and warmth; avoiding negative emotions in interactions with students; being sensitive to the individual needs, emotions, culture and beliefs of students

**2** Promoting a positive climate of student-student relationships, characterised by respect, trust, cooperation and care

**3** Promoting learner motivation through feelings of competence, autonomy and relatedness

**4** Creating a climate of high expectations, with high challenge and high trust, so learners feel it is okay to have a go; encouraging learners to attribute their success or failure to things they can change