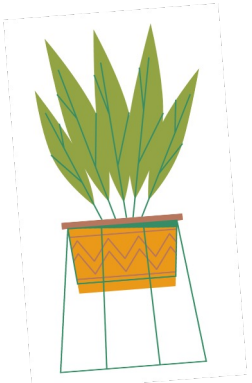




***Welcome to  
Primary 4!***



# *Hello P4!*

*It is a pleasure to meet you.*

*We are your*

*Primary/Children's House  
Guides - **Celeste & Ms. Pam***

*We are so excited that you are*

*in our class this year! Together, we will have a warm  
& collaborative learning community. Thank you for  
being here and making the choice of Montessori.*



# Schedule

Students will change into their indoor shoes as they come in. Snack will be available as students arrive for them to enjoy at their own pace.

The work cycle refers to the time where students are engaging with the classroom materials and being presented lessons!





## P4 DAILY SCHEDULE

<b>8:15-8:30</b>
ARRIVAL
<b>8:15-11:00</b>
MORNING WORK CYCLE SNACK AVAILABLE MORNING MEETING/STORY
<b>11:15-11:45</b>
RECESS
<b>11:45-12:15</b>
LUNCH
<b>12:45-2:45</b>
REST TIME/AFTERNOON WORK CYCLE
<b>2:15-3:05</b>
SPECIALS
<b>3:15-3:45</b>
DISMISSAL

CITY GARDEN  
MONTGOMERY  
PRIMARY 4

# *Communications*

**This year, we will communicate with parents...**

- ❖ Transparent classroom
- ❖ Newsletters
- ❖ Email
- ❖ If the information is urgent or time sensitive you will receive a call and/or text.

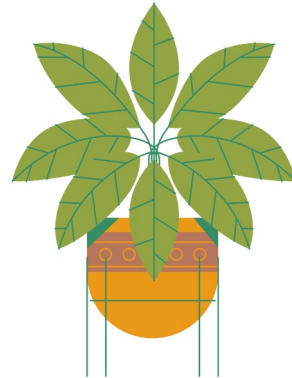




# *Reminders*



1. Please bring a family photo for our photo display on your child's first day!
2. Ensure your child has their school supplies, including their indoor shoes.
3. Sign up for snack, food prep supply and flower donations. We rely on families to have these items which we use weekly.
4. Sign up for our Back to School BBQ!



# *Contact Info*

If you have any questions at all please do not hesitate to email me!

[celeste.ocana@citygardenschool.org](mailto:celeste.ocana@citygardenschool.org)

