

Sprightly CBD
700B Cromwell Drive
Greenville, North Carolina
27858

Certificate of Analysis

ACS LABORATORY | CANNABIS & HEMP
BEYOND COMPLIANCE

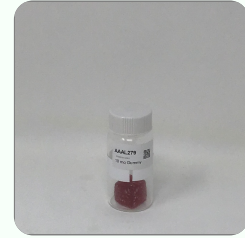
Order #: RO0200811-010013 Order Date: 2020-08-11 Collection Date: 2020-08-14 Report Date: 2020-08-25

Lot#:(19122217110224) 10 mg Gummy
Sample #: AAAL279
Specimen Type: CBD/HEMP Edibles (Ingestion)
Extracted From: Hemp
Description: Edible Gummy

Initial Gross Weight: 21.5 g
Net Weight: 4000 mg
Method: SOP-3



Potency Tested	Heavy Metals Passed	Mycotoxins Passed
Pesticides Passed	Listeria Monocytogenes Passed	Pathogenic Passed
Pathogenic Passed		



The photos on this report are of a sample collected by the lab and may vary from the final packaging.

Total CBD 0.281% 11.239mg	Total THC Not Detected	Total CBG Not Detected
Total CBN Not Detected	Other Cannabinoids 0.001% 0.046mg	Total Cannabinoids 0.282% 11.284mg

Potency - 11 (Tested)

(HPLC/LCMS)

Analyte	Result (mg/g)	(%)	LOQ (%)	Analyte	Result (mg/g)	(%)	LOQ (%)	Analyte	Result (mg/g)	(%)	LOQ (%)
CBC		<LOQ	0.001	CBD	2.798	0.280	0.001	CBDA	0.013	0.001	0.001
CBDV	0.011	0.001	0.001	CBG		<LOQ	0.001	CBGA		<LOQ	0.001
CBN		<LOQ	0.001	Delta-8 THC		<LOQ	0.001	Delta-9 THC		<LOQ	0.001
THCA-A		<LOQ	0.001	THCV		<LOQ	0.001	Total CBD	2.810	0.281	0.001
Total THC		<LOQ	0.001								

*Total CBD = CBD + (CBD-A * 0.877), *Total THC = THCA-A * 0.877 + Delta 9 THC, *CBG Total = (CBGA * 0.877) + CBG, *CBN Total = (CBNA * 0.877) + CBN, *Other Cannabinoids Total = CBC + CBDV + THCV + THCV-A, *Total Detected Cannabinoids = CBD Total + CBG Total + CBN Total + THC Total + CBC + CBDV + THCV + THCV-A, *Total (mg) = Total (%) ÷ 100 * Net Weight(mg) (mg/g) = Milligram per Gram, , LOQ = Limit of Quantitation, , LOD = Limit of Detection

Xueli Gao
Ph.D., DABT

Lab Toxicologist

Aixia Sun
D.H.Sc., M.Sc., B.Sc., MT (AAB)

Principal Scientist

This report shall not be reproduced, without written approval, from ACS Laboratory. The results of this report relate only to the material or product analyzed. Test results are confidential unless explicitly waived otherwise. Accredited by a third-party accrediting body as a competent testing laboratory pursuant to ISO/IEC 17025 of the International Organization for Standardization.

721 Cortaro Drive
Sun City Center, FL - 33573

P: +1 (866) 762-8379
F: +1 (813) 634-4538

E: info@acslabcannabis.com
http://www.acslabcannabis.com

License No. 800025015
CLIA No. 10D1094068



CERTIFICATE OF ANALYSIS

Customer: Sprightly CBD - Morrisville, NC 27560

Order #: 704561
 Batch #: FS240004
 Order Date: 08/30/2019
 Collection Date: 08/30/2019
 Report Date: 10/14/2019

Specimen Type: Extract
 Description: Tincture w/ MCT Oil
 Extracted From: Hemp
 Method: SOP-3

Initial Gross Weight: 39123.00(mg)
 Specimen Weight: 96.06(mg)

Potency

(HPLC)

Analyte	Result (mg/g)	(%)	LOQ (%)	Analyte	Result (mg/g)	(%)	LOQ (%)	Analyte	Result (mg/g)	(%)	LOQ (%)
CBC	1.841	0.184	0.001	CBCA		ND	0.001	CBD	96.690	9.669	0.001
CBDA		ND	0.001	CBDV	1.222	0.122	0.001	CBDVA		ND	0.001
CBG	0.872	0.087	0.001	CBGA		ND	0.001	CBL		ND	0.001
CBN	0.150	0.015	0.001	CBNA		ND	0.001	Delta-8-THC		ND	0.001
Delta-9-THC	2.146	0.215	0.001	THCA-A		ND	0.001	THCV		ND	0.001
THCVA		ND	0.001	Total CBD	96.690	9.669	0.001	Total THC	2.146	0.215	0.001

Pesticides (Passed)

(LCMS/MS)

Analyte	Action Level (ppm)	Result (ppm)	LOQ (ppm)	Analyte	Action Level (ppm)	Result (ppm)	LOQ (ppm)	Analyte	Action Level (ppm)	Result (ppm)	LOQ (ppm)
Abamectin	0.500	<LOQ	0.100	Acephate	0.400	<LOQ	0.100	Acequinocyl	2.000	<LOQ	0.750
Acetamiprid	0.200	<LOQ	0.100	Aldicarb	0.400	<LOQ	0.100	Azoxystrobin	0.200	<LOQ	0.100
Bifenazate	0.200	<LOQ	0.100	Bifenthrin	0.200	<LOQ	0.100	Boscalid	0.400	<LOQ	0.100
Carbaryl	0.200	<LOQ	0.100	Carbofuran	0.200	<LOQ	0.100	Chlorantraniliprole	0.200	<LOQ	0.100
Chlorpyrifos	0.200	<LOQ	0.100	Clofentazine	0.200	<LOQ	0.100	Cypermethrin	1.000	<LOQ	0.100
Daminozide	1.000	<LOQ	0.100	Diazinon	0.200	<LOQ	0.100	Dichlorvos	0.100	<LOQ	0.100
Dimethoate	0.200	<LOQ	0.100	Ethoprophos	0.200	<LOQ	0.100	Etofenprox	0.400	<LOQ	0.100
Etoazole	0.200	<LOQ	0.100	Fenoxycarb	0.200	<LOQ	0.100	Fipronil	0.400	<LOQ	0.100
Flonicamid	1.000	<LOQ	0.100	Fludioxonil	0.400	<LOQ	0.100	Hexythiazox	1.000	<LOQ	0.100
Imazalil	0.200	<LOQ	0.100	Imidacloprid	0.400	<LOQ	0.100	Kresoxim Methyl	0.400	<LOQ	0.100
Malathion A	0.200	<LOQ	0.100	Metalaxyl	0.200	<LOQ	0.100	Methiocarb	0.200	<LOQ	0.100
Methomyl	0.400	<LOQ	0.100	MGK-264	0.200	<LOQ	0.100	Myclobutanil	0.200	<LOQ	0.100
Naled	0.500	<LOQ	0.100	Oxamyl	1.000	<LOQ	0.100	Paclbutrazol	0.400	<LOQ	0.100
Parathion-methyl	0.200	<LOQ	0.250	Permethrin	0.200	<LOQ	0.100	Phosmet	0.200	<LOQ	0.100
Piperonylbutoxide	2.000	<LOQ	0.100	Prallethrin	0.200	<LOQ	0.100	Propiconazole	0.400	<LOQ	0.100
Propoxur	0.200	<LOQ	0.100	Pyrethrins	1.000	<LOQ	0.100	Pyridaben	0.200	<LOQ	0.100
Spinosyn A	0.200	<LOQ	0.100	Spinosyn D	0.200	<LOQ	0.100	Spiromesifen	0.200	<LOQ	0.100
Spirotetramat	0.200	<LOQ	0.100	Spiroxamine	0.400	<LOQ	0.100	Tebuconazole	0.400	<LOQ	0.100
Thiacloprid	0.200	<LOQ	0.100	Thiamethoxam	0.200	<LOQ	0.100	Trifloxystrobin	0.200	<LOQ	0.100

Thomas Farrell, MD
Lab Director

* Total CBD = CBD + (CBD-A * 0.877). Total THC = THCA-A * 0.877 + Delta 9 THC, ND = <LOQ, T-Caryophyllene = Trans-Caryophyllene, <LOQ = Less Than Limit of Quantitation, QNS = Quantity Not Sufficient. (%) = Percent, (ppm) = Parts per Million, (ppb) = Parts per Billion, (µg/Kg) = Microgram per Kilogram, (mg/g) = Milligram per Gram, ppm = (µg/g), ppb = (µg/kg).

This report shall not be reproduced, without written approval, from ACS Laboratory. The results of this report relate only to the material or product analyzed. Test results are confidential unless explicitly waived otherwise.

721 Cortaro Drive
 Sun City Center, FL - 33573

P: +1 (866) 762-8379
 F: +1 (813) 634-4538

E: info@acslabcannabis.com
<http://www.acslabcannabis.com>

License No. 800025015
 CLIA No. 10D1094068



CERTIFICATE OF ANALYSIS



Customer: Sprightly CBD - Morrisville, NC 27560

Order #: 704561
Batch #: FS240004
Order Date: 08/30/2019
Collection Date: 08/30/2019
Report Date: 10/14/2019

Specimen Type: Extract
Description: Tincture w/ MCT Oil
Extracted From: Hemp
Method: SOP-3

Initial Gross Weight: 39123.00(mg)
Specimen Weight: 96.06(mg)

Terpenes

								(GC/GCMS)			
Analyte	Result (mg/g)	(%)	LOQ (%)	Analyte	Result (mg/g)	(%)	LOQ (%)	Analyte	Result (mg/g)	(%)	LOQ (%)
3-Carene	ND		0.001	Alpha-Bisabolol	ND		0.001	Alpha-Pinene	ND		0.002
Alpha-Terpinene	ND		0.001	Alpha-Terpineol	ND		0.001	Aromadendrene	ND		0.001
Beta-Myrcene	ND		0.001	Beta-Pinene	ND		0.001	Camphene	ND		0.001
Fenchol	ND		0.002	Gamma-Terpinene	ND		0.001	Gamma-Terpineol	ND		0.002
Geraniol	ND		0.001	Guaiol	ND		0.001	Humulene	ND		0.001
Isopulegol	ND		0.001	Linalool	ND		0.001	Nerolidol-1	ND		0.001
Nerolidol-2	ND		0.001	Ocimene-1	ND		0.001	Ocimene-2	ND		0.001
P-Cymene	ND		0.001	R-Limonene	ND		0.000	Terpinolene	ND		0.001
Trans-Caryophyllene	ND		0.001								

Residual Solvents (Passed)

								(GC/GCMS)			
Analyte	Action Level (ppm)	Result (ppm)	LOQ (ppm)	Analyte	Action Level (ppm)	Result (ppm)	LOQ (ppm)	Analyte	Action Level (ppm)	Result (ppm)	LOQ (ppm)
Acetone	5,000.000	<LOQ	87.900	Benzene	1.600	<LOQ	1.600	Chloroform	53.000	<LOQ	53.000
Ethanol	5,000.000	<LOQ	26.700	I-Butane	5,000.000	<LOQ	100.000	Isopropanol	5,000.000	<LOQ	52.300
Methanol	3,000.000	<LOQ	87.900	N-Butane	5,000.000	<LOQ	200.000	Pentane	5,000.000	<LOQ	389.500
Toluene	890.000	<LOQ	38.400								

Thomas Farrell, MD
Lab Director

* Total CBD = CBD + (CBD-A * 0.877). Total THC = THCA-A * 0.877 + Delta 9 THC, ND = <LOQ, T-Caryophyllene = Trans-Caryophyllene, <LOQ = Less Than Limit of Quantitation, QNS = Quantity Not Sufficient. (%) = Percent, (ppm) = Parts per Million, (ppb) = Parts per Billion, (µg/Kg) = Microgram per Kilogram, (mg/g) = Milligram per Gram, ppm = (µg/g), ppb = (µg/kg).

This report shall not be reproduced, without written approval, from ACS Laboratory. The results of this report relate only to the material or product analyzed. Test results are confidential unless explicitly waived otherwise.

721 Cortaro Drive
Sun City Center, FL - 33573

P: +1 (866) 762-8379
F: +1 (813) 634-4538

E: info@acslabcannabis.com
http://www.acslabcannabis.com

License No. 800025015
CLIA No. 10D1094068



CERTIFICATE OF ANALYSIS



Customer: Sprightly CBD - Morrisville, NC 27560

Order #: 704561
Batch #: FS240004
Order Date: 08/30/2019
Collection Date: 08/30/2019
Report Date: 10/14/2019

Specimen Type: Extract
Description: Tincture w/ MCT Oil
Extracted From: Hemp
Method: SOP-3

Initial Gross Weight: 39123.00(mg)
Specimen Weight: 96.06(mg)

Microbiology (qPCR) (Passed)

Analyte	Result (cfu/g)	Remark	Analyte	Result (cfu/g)	Remark	Analyte	Result (cfu/g)	Remark
Total Aerobic Count	<500	Passed	Total Coliform	<500	Passed	Total Enterobacteriaceae	<500	Passed
Total Yeast/Mold	<500	Passed						

Heavy Metals (Passed)

Analyte	Action Level (ppb)	Result (ppb)	LOQ (ppb)	Analyte	Action Level (ppb)	Result (ppb)	LOQ (ppb)	Analyte	Action Level (ppb)	Result (ppb)	LOQ (ppb)
Arsenic (As)	500.000	<LOQ	100.000	Cadmium (Cd)	500.000	<LOQ	100.000	Lead (Pb)	500.000	<LOQ	100.000
Mercury (Hg)	500.000	<LOQ	100.000								

Mycotoxins (Passed)

Analyte	Action Level (ppb)	Result (ppb)	LOQ (ppb)	Analyte	Action Level (ppb)	Result (ppb)	LOQ (ppb)	Analyte	Action Level (ppb)	Result (ppb)	LOQ (ppb)
Aflatoxin B1		<LOQ	15.000	Aflatoxin B2		<LOQ	15.000	Aflatoxin G1		<LOQ	15.000
Aflatoxin G2		<LOQ	15.000	Aflatoxin Total	20.000	<LOQ	6.000	Ochratoxin A	20.000	<LOQ	15.000

Thomas Farrell, MD
Lab Director

* Total CBD = CBD + (CBD-A * 0.877). Total THC = THCA-A * 0.877 + Delta 9 THC, ND = <LOQ, T-Caryophyllene = Trans-Caryophyllene, <LOQ = Less Than Limit of Quantitation, QNS = Quantity Not Sufficient. (%) = Percent, (ppm) = Parts per Million, (ppb) = Parts per Billion, (µg/Kg) = Microgram per Kilogram, (mg/g) = Milligram per Gram, ppm = (µg/g), ppb = (µg/kg).

This report shall not be reproduced, without written approval, from ACS Laboratory. The results of this report relate only to the material or product analyzed. Test results are confidential unless explicitly waived otherwise.

721 Cortaro Drive
Sun City Center, FL - 33573

P: +1 (866) 762-8379
F: +1 (813) 634-4538

E: info@acslabcannabis.com
http://www.acslabcannabis.com

License No. 800025015
CLIA No. 10D1094068



CERTIFICATE OF ANALYSIS

Customer: Sprightly CBD - ,

Order #: 707776	Specimen Type: Extract	Initial Gross Weight: 39306.00(mg)
Batch #: 19267S	Description: 1000MG 0.85 OZ SALVE AND	Specimen Weight: 112.95(mg)
Order Date: 10/18/2019	2000MG 1.7OZ SALVE	
Collection Date: 10/18/2019	Extracted From: Hemp	
Report Date: 12/11/2019	Method: SOP-3	

Potency - 11

(HPLC)

Analyte	Result (mg/g)	(%)	LOQ (%)	Analyte	Result (mg/g)	(%)	LOQ (%)	Analyte	Result (mg/g)	(%)	LOQ (%)
CBC		ND	0.001	CBD	46.840	4.684	0.001	CBDA		ND	0.001
CBDV	0.545	0.054	0.001	CBG	0.693	0.069	0.001	CBGA		ND	0.001
CBN		ND	0.001	Delta-8-THC		ND	0.001	Delta-9-THC	0.412	0.041	0.001
THCA-A		ND	0.001	THCV	0.214	0.021	0.001	Total CBD	46.840	4.684	0.001
Total THC	0.412	0.041	0.001								

Pesticides. (Passed)

(LCMS/MS)

Analyte	Action Level (ppm)	Result (ppm)	LOQ (ppm)	Analyte	Action Level (ppm)	Result (ppm)	LOQ (ppm)	Analyte	Action Level (ppm)	Result (ppm)	LOQ (ppm)
Abamectin	0.500	<LOQ	0.100	Acephate	0.400	<LOQ	0.100	Acequinocyl	2.000	<LOQ	0.750
Acetamiprid	0.200	<LOQ	0.100	Aldicarb	0.400	<LOQ	0.100	Azoxystrobin	0.200	<LOQ	0.100
Bifenazate	0.200	<LOQ	0.100	Bifenthrin	0.200	<LOQ	0.100	Boscalid	0.400	<LOQ	0.100
Carbaryl	0.200	<LOQ	0.100	Carbofuran	0.200	<LOQ	0.100	Chlorantraniliprole	0.200	<LOQ	0.100
Chlorpyrifos	0.200	<LOQ	0.100	Clofentazine	0.200	<LOQ	0.100	Cypermethrin	1.000	<LOQ	0.100
Daminozide	1.000	<LOQ	0.100	Diazinon	0.200	<LOQ	0.100	Dichlorvos	0.100	<LOQ	0.100
Dimethoate	0.200	<LOQ	0.100	Ethoprophos	0.200	<LOQ	0.100	Etofenprox	0.400	<LOQ	0.100
Etoxazole	0.200	<LOQ	0.100	Fenoxycarb	0.200	<LOQ	0.100	Fipronil	0.400	<LOQ	0.100
Flonicamid	1.000	<LOQ	0.100	Fludioxonil	0.400	<LOQ	0.100	Hexythiazox	1.000	<LOQ	0.100
Imazalil	0.200	<LOQ	0.100	Imidacloprid	0.400	<LOQ	0.100	Kresoxim Methvl	0.400	<LOQ	0.100
Malathion A	0.200	<LOQ	0.100	Metalaxyl	0.200	<LOQ	0.100	Methiocarb	0.200	<LOQ	0.100
Methomyl	0.400	<LOQ	0.100	MGK-264	0.200	<LOQ	0.100	Myclobutanil	0.200	<LOQ	0.100
Naled	0.500	<LOQ	0.100	Oxamyl	1.000	<LOQ	0.100	Pacllobutrazol	0.400	<LOQ	0.100
Parathion-methyl	0.200	<LOQ	0.250	Permethrin	0.200	<LOQ	0.100	Phosmet	0.200	<LOQ	0.100
Piperonylbutoxide	2.000	<LOQ	0.100	Prallethrin	0.200	<LOQ	0.100	Propiconazole	0.400	<LOQ	0.100
Propoxur	0.200	<LOQ	0.100	Pyrethrins	1.000	<LOQ	0.100	Pyridaben	0.200	<LOQ	0.100
Spinosyn A	0.200	<LOQ	0.100	Spinosyn D	0.200	<LOQ	0.100	Spiromesifen	0.200	<LOQ	0.100
Spirotetramat	0.200	<LOQ	0.100	Spiroxamine	0.400	<LOQ	0.100	Tebuconazole	0.400	<LOQ	0.100
Thiacloprid	0.200	<LOQ	0.100	Thiamethoxam	0.200	<LOQ	0.100	Trifloxystrobin	0.200	<LOQ	0.100

Xueli Gao, Ph.D., DABT
Lab Toxicologist

Aixia Sun, D.H.Sc., M.Sc., B.Sc., MT (AAB)
Principal Scientist

** Total CBD = CBD + (CBD-A * 0.877). Total THC = THCA-A * 0.877 + Delta 9 THC, ND = <LOQ, T-Caryophyllene = Trans-Caryophyllene, <LOQ = Less Than Limit of Quantitation, QNS = Quantity Not Sufficient. (%) = Percent, (ppm) = Parts per Million, (ppb) = Parts per Billion, (µg/Kg) = Microgram per Kilogram, (mg/g) = Milligram per Gram, ppm = (µg/g), ppb = (µg/kg).

This report shall not be reproduced, without written approval, from ACS Laboratory. The results of this report relate only to the material or product analyzed. Test results are confidential unless explicitly waived otherwise.

Accredited by a third-party accrediting body as a competent testing laboratory pursuant to ISO/IEC 17025 of the International Organization for Standardization.

721 Cortaro Drive Sun City Center, FL - 33573	P: +1 (866) 762-8379 F: +1 (813) 634-4538	E: info@acslabcannabis.com http://www.acslabcannabis.com	License No. 800025015 CLIA No. 10D1094068
--	--	---	--



CERTIFICATE OF ANALYSIS

Customer: Sprightly CBD - ,

Order #: 707776	Specimen Type: Extract	Initial Gross Weight: 39306.00(mg)
Batch #: 19267S	Description: 1000MG 0.85 OZ SALVE AND	Specimen Weight: 112.95(mg)
Order Date: 10/18/2019	2000MG 1.7OZ SALVE	
Collection Date: 10/18/2019	Extracted From: Hemp	
Report Date: 12/11/2019	Method: SOP-3	

Residual Solvents (Passed)

(GC/GCMS)

Analyte	Action Level (ppm)	Result (ppm)	LOQ (ppm)	Analyte	Action Level (ppm)	Result (ppm)	LOQ (ppm)	Analyte	Action Level (ppm)	Result (ppm)	LOQ (ppm)
Acetone	5,000.000	<LOQ	87.900	Benzene	1.600	<LOQ	1.600	Chloroform	53.000	<LOQ	53.000
Ethanol	5,000.000	<LOQ	26.700	Hexane	60.000	<LOQ	36.600	I-Butane	5,000.000	<LOQ	100.000
Isopropanol	5,000.000	<LOQ	52.300	Methanol	3,000.000	<LOQ	87.900	N-Butane	5,000.000	<LOQ	200.000
Pentane	5,000.000	<LOQ	389.500	Toluene	890.000	<LOQ	38.400				

Heavy Metals (Passed)

(ICP-MS)

Analyte	Action Level (ppb)	Result (ppb)	LOQ (ppb)	Analyte	Action Level (ppb)	Result (ppb)	LOQ (ppb)	Analyte	Action Level (ppb)	Result (ppb)	LOQ (ppb)
Arsenic (As)	500.000	<LOQ	100.000	Cadmium (Cd)	500.000	<LOQ	100.000	Lead (Pb)	500.000	<LOQ	100.000
Mercury (Hg)	500.000	<LOQ	100.000								

Mycotoxins (Passed)

(LCMS/MS)

Analyte	Action Level (ppb)	Result (ppb)	LOQ (ppb)	Analyte	Action Level (ppb)	Result (ppb)	LOQ (ppb)	Analyte	Action Level (ppb)	Result (ppb)	LOQ (ppb)
Aflatoxin B1		<LOQ	6.000	Aflatoxin B2		<LOQ	6.000	Aflatoxin G1		<LOQ	6.000
Aflatoxin G2		<LOQ	6.000	Aflatoxin Total	20.000	<LOQ	6.000	Ochratoxin A	20.000	<LOQ	12.000

Moisture

(Moisture Analyzer)

Analyte	Result (%)
Moisture	0.910

Pathogenic Microbiology (Passed)

(Micro Array)

Analyte	Result (cfu/g)	Remark	Analyte	Result (cfu/g)	Remark	Analyte	Result (cfu/g)	Remark
Aspergillus Flavus	<1	Absence	Aspergillus Fumigatus	<1	Absence	Aspergillus Niger	<1	Absence
Aspergillus Terreus	<1	Absence	Salmonella	<1	Absence	STEC E. Coli	<1	Absence

Water Activity (Passed)

(Water Activity Analyzer)

Analyte	Action Level (aw)	Result (aw)
Water Activity	0.850	0.472

Filth and Foreign Material (Passed)

(Electronic Balance)

Analyte	Action Level (area ratio)	Result (area ratio)	Analyte	Action Level (mg/Kg)	Result (mg/Kg)	Analyte	Action Level (%)	Result (%)
Covered Area	0.250	0.000	Feces	0.500	0.000	Weight %	5.000	0.000

Xueli Gao, Ph.D., DABT
Lab Toxicologist

Aixia Sun, D.H.Sc., M.Sc., B.Sc., MT (AAB)
Principal Scientist

** Total CBD = CBD + (CBD-A * 0.877). Total THC = THCA-A * 0.877 + Delta 9 THC, ND = <LOQ, T-Caryophyllene = Trans-Caryophyllene, <LOQ = Less Than Limit of Quantitation, QNS = Quantity Not Sufficient. (%) = Percent, (ppm) = Parts per Million, (ppb) = Parts per Billion, (µg/Kg) = Microgram per Kilogram, (mg/g) = Milligram per Gram, ppm = (µg/g), ppb = (µg/kg),

This report shall not be reproduced, without written approval, from ACS Laboratory. The results of this report relate only to the material or product analyzed. Test results are confidential unless explicitly waived otherwise.

Accredited by a third-party accrediting body as a competent testing laboratory pursuant to ISO/IEC 17025 of the International Organization for Standardization.

721 Cortaro Drive
Sun City Center, FL - 33573

P: +1 (866) 762-8379
F: +1 (813) 634-4538

E: info@acslabcannabis.com
http://www.acslabcannabis.com

License No. 800025015
CLIA No. 10D1094068

Sprightly CBD
700B Cromwell Drive
Greenville, North Carolina
27858

Certificate of Analysis

ACS LABORATORY | CANNABIS & HEMP
 BEYOND COMPLIANCE

Order #: RO0200811-010013 **Order Date:** 2020-08-11 **Collection Date:** 2020-08-14 **Report Date:** 2020-08-25

Lot#: (19122217110224)10 mg Gummy
Sample #: AAAL279
Specimen Type: CBD/HEMP Edibles (Ingestion)
Extracted From: Hemp
Description: Edible Gummy

Initial Gross Weight: 21.5 g
Net Weight: 4000 mg
Method: SOP-3



Heavy Metals (Passed) (ICP-MS)

Analyte	Action Level (ppb)	Result (ppb)	LOQ (ppb)	Analyte	Action Level (ppb)	Result (ppb)	LOQ (ppb)	Analyte	Action Level (ppb)	Result (ppb)	LOQ (ppb)
Arsenic (As)	1500	<LOQ	100	Cadmium (Cd)	500	<LOQ	100	Lead (Pb)	500	<LOQ	100
Mercury (Hg)	3000	<LOQ	100								

(ppb) = Parts per Billion, (ppb) = (µg/kg), LOQ = Limit of Quantitation

Mycotoxins (Passed) (LCMS/API/GCMS)

Analyte	Action Level (ppb)	Result (ppb)	LOQ (ppb)	Analyte	Action Level (ppb)	Result (ppb)	LOQ (ppb)	Analyte	Action Level (ppb)	Result (ppb)	LOQ (ppb)
Aflatoxin B1	20	<LOQ	6	Aflatoxin B2	20	<LOQ	6	Aflatoxin G1	20	<LOQ	6
Aflatoxin G2	20	<LOQ	6	Ochratoxin A	20	<LOQ	12				

(ppb) = Parts per Billion, (ppb) = (µg/kg), LOQ = Limit of Quantitation

Xueli Gao
 Ph.D., DABT Lab Toxicologist

Aixia Sun
 D.H.Sc., M.Sc., B.Sc., MT (AAB) Principal Scientist

This report shall not be reproduced, without written approval, from ACS Laboratory. The results of this report relate only to the material or product analyzed. Test results are confidential unless explicitly waived otherwise. Accredited by a third-party accrediting body as a competent testing laboratory pursuant to ISO/IEC 17025 of the International Organization for Standardization.

721 Cortaro Drive
 Sun City Center, FL - 33573

P: +1 (866) 762-8379
 F: +1 (813) 634-4538

E: info@acslabcannabis.com
<http://www.acslabcannabis.com>

License No. 800025015
 CLIA No. 10D1094068

Order #: RO0200811-010013 Order Date: 2020-08-11 Collection Date: 2020-08-14 Report Date: 2020-08-25

Lot#:(19122217110224) 10 mg Gummy
Sample #: AAAL279
Specimen Type: CBD/HEMP Edibles (Ingestion)
Extracted From: Hemp
Description: Edible Gummy

Initial Gross Weight: 21.5 g
Net Weight: 4000 mg
Method: SOP-3



Pesticides FL V4 (Non-Inhalable) (Passed) (LCMS/API/GCMS)

Analyte	Action Level (ppb)	Result (ppb)	LOQ (ppb)	Analyte	Action Level (ppb)	Result (ppb)	LOQ (ppb)	Analyte	Action Level (ppb)	Result (ppb)	LOQ (ppb)
Abamectin	300	<LOQ	28.23	Acephate	3000	<LOQ	30	Acequinocyl	2000	<LOQ	48
Acetamiprid	3000	<LOQ	30	Aldicarb	100	<LOQ	30	Azoxystrobin	3000	<LOQ	10
Bifenazate	3000	<LOQ	30	Bifenthrin	500	<LOQ	30	Boscalid	3000	<LOQ	10
Captan	3000	<LOQ	30	Carbaryl	500	<LOQ	10	Carbofuran	100	<LOQ	10
Chlorantraniliprole	3000	<LOQ	10	Chlordane	100	<LOQ	10	Chlorfenapyr	100	<LOQ	30
Chloromequat Chloride	3000	<LOQ	10	Chlorpyrifos	100	<LOQ	30	Clofentezine	500	<LOQ	30
Cypermethrin	1000	<LOQ	30	Coumaphos	100	<LOQ	48	Cyfluthrin	1000	<LOQ	30
Dichlorvos	100	<LOQ	30	Daminozide	100	<LOQ	30	Diazinon	200	<LOQ	30
Ethoprophos	100	<LOQ	30	Dimethoate	100	<LOQ	30	Dimethomorph	3000	<LOQ	48
Fenhexamid	3000	<LOQ	10	Etofenprox	100	<LOQ	30	Etoxazole	1500	<LOQ	30
Fipronil	100	<LOQ	30	Fenoxycarb	100	<LOQ	30	Fenpyroximate	2000	<LOQ	30
Hexythiazox	2000	<LOQ	30	Fonicamid	2000	<LOQ	30	Fludioxonil	3000	<LOQ	48
Kresoxim Methyl	1000	<LOQ	30	Imazalil	100	<LOQ	30	Imidacloprid	3000	<LOQ	30
Methiocarb	100	<LOQ	30	Malathion	2000	<LOQ	30	Metalaxyl	3000	<LOQ	10
Mevinphos	100	<LOQ	10	Methomyl	100	<LOQ	30	methyl-Parathion	100	<LOQ	10
Oxamyl	500	<LOQ	30	Myclobutanil	3000	<LOQ	30	Naled	500	<LOQ	30
Permethrin	1000	<LOQ	30	Paclobutrazol	100	<LOQ	30	Pentachloronitrobenzene	200	<LOQ	10
Prallethrin	400	<LOQ	30	Phosmet	200	<LOQ	30	Piperonylbutoxide	3000	<LOQ	30
Pyrethrins	1000	<LOQ	30	Propiconazole	1000	<LOQ	30	Propoxur	100	<LOQ	30
Spinosad	3000	<LOQ	30	Pyridaben	3000	<LOQ	30	Spinetoram	3000	<LOQ	10
Spiroxamine	100	<LOQ	30	Spiromesifen	3000	<LOQ	30	Spirotetramat	3000	<LOQ	30
Thiamethoxam	1000	<LOQ	30	Tebuconazole	1000	<LOQ	30	Thiacloprid	100	<LOQ	30
				Trifloxystrobin	3000	<LOQ	30				

(ppb) = Parts per Billion, (µg/kg), , LOQ = Limit of Quantitation

Xueli Gao
Ph.D., DABT

Lab Toxicologist

Aixia Sun
D.H.Sc., M.Sc., B.Sc., MT (AAB)

Principal Scientist

This report shall not be reproduced, without written approval, from ACS Laboratory. The results of this report relate only to the material or product analyzed. Test results are confidential unless explicitly waived otherwise. Accredited by a third-party accrediting body as a competent testing laboratory pursuant to ISO/IEC 17025 of the International Organization for Standardization.

721 Cortaro Drive
Sun City Center, FL - 33573

P: +1 (866) 762-8379
F: +1 (813) 634-4538

E: info@acslabcannabis.com
http://www.acslabcannabis.com

License No. 800025015
CLIA No. 10D1094068

Order #: RO0200811-010013 Order Date: 2020-08-11 Collection Date: 2020-08-14 Report Date: 2020-08-25

Lot#:(19122217110224) 10 mg Gummy
Sample #: AAAL279
Specimen Type: CBD/HEMP Edibles (Ingestion)
Extracted From: Hemp
Description: Edible Gummy

Initial Gross Weight: 21.5 g
Net Weight: 4000 mg
Method: SOP-3



Listeria Monocytogenes (Passed)

(qPCR)

Analyte	Result (cfu/g)	Result
Listeria Monocytogenes	<500	Absence in 1g

(cfu/g) = Colony Forming Unit per Gram

Pathogenic SAE (qPCR) (Passed)

(qPCR)

Analyte	Result (cfu/g)
Aspergillus (Flavus, Fumigatus, Niger, Terreus)	Absence in 1g

(cfu/g) = Colony Forming Unit per Gram

Pathogenic SE (qPCR) (Passed)

(qPCR)

Analyte	Result (cfu/g)	Analyte	Result (cfu/g)
E.Coli	Absence	Salmonella	Absence

(cfu/g) = Colony Forming Unit per Gram

Xueli Gao
Ph.D., DABT

Lab Toxicologist

Aixia Sun
D.H.Sc., M.Sc., B.Sc., MT (AAB)

Principal Scientist

This report shall not be reproduced, without written approval, from ACS Laboratory. The results of this report relate only to the material or product analyzed. Test results are confidential unless explicitly waived otherwise. Accredited by a third-party accrediting body as a competent testing laboratory pursuant to ISO/IEC 17025 of the International Organization for Standardization.

721 Cortaro Drive
Sun City Center, FL - 33573

P: +1 (866) 762-8379
F: +1 (813) 634-4538

E: info@acslabcannabis.com
<http://www.acslabcannabis.com>

License No. 800025015
CLIA No. 10D1094068