

# Superior Accuracy. Zero Maintenance.

Neptune® MACH 10® Ultrasonic Meter



The MACH 10® ultrasonic water meter features solid state ultrasonic technology including a factory-calibrated, replaceable unitized measuring element (UME) with no degradation of accuracy over time. Combined with a corrosion-resistant, lead free, high-copper alloy maincase, the MACH 10 is built to withstand demanding service conditions and deliver sustained accuracy over the life of the meter.

- Sizes 3" through 6"
- Advanced ultrasonic technology with easily replaceable UME design
- Accuracy sustained over meter life
- Can be installed in both horizontal and vertical applications
- Available in standard turbine and compound lay lengths
- Lead free, high-copper alloy maincase
- Open flow path design with low pressure loss
- UL Listed and FM Approved

## Specifications

AWWA C715 Compliant

NSF/ANSI 61 Certified

### Application

- Cold water measurement of flow in potable, combination potable and fire service, and reclaim/secondary water applications.

### Maximum Operating Water Pressure

- 175 psi

### Operating Water Temperature Range

- Meets AWWA C-715 accuracy specifications for water temperatures from 33°F to 122°F (+0.5°C to 50°C).

### Environmental Conditions

- Operating temperature: +14°F to +149°F (-10°C to +65°C)
- Storage temperature: -40°F to +158°F (-40°C to +70°C)

## Options

### Units of Measure

- U.S. gallons, cubic feet, cubic metres

## Warranty

- Neptune provides a limited warranty for performance, materials, and workmanship. See warranty statement for details.

## System Compatibility

- Compatible with Neptune R900® and CMIU. Also available as MACH 10®)R900i™ for an integrated radio solution and MACH 10®)TC for Sensus Touch Coupler compatibility.

## Operating Characteristics

Meter Size	Extended Low Flow @ 100% Accuracy (+/- 3.0%)	Normal Operating Range @ 100% Accuracy (+/- 1.5%)	Safe Maximum Operating Capacity	
			Standard	Fire Service
3"	0.50 U.S. gpm	0.75 to 500 U.S. gpm	500 U.S. gpm	420 U.S. gpm
4"	0.75 U.S. gpm	1.5 to 1250 U.S. gpm	1250 U.S. gpm	1100 U.S. gpm
6"	1.0 U.S. gpm	2.0 to 2000 U.S. gpm	2000 U.S. gpm	1800 U.S. gpm

## Dimensions

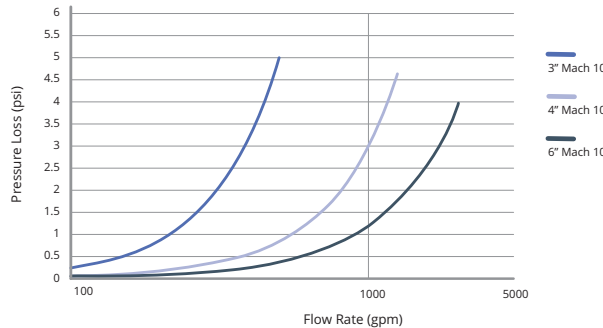
Meter Size	Length	Height	Weight
3"	12"	9½"	39 lbs
	17"	9½"	42 lbs
4"	14"	11"	51 lbs
	20"	11"	57 lbs
6"	18"	12¾"	79 lbs
	24"	12¾"	91 lbs

## Registration

High Resolution (8-digit reading)	3"	4"	6"
1 U.S. Gallons	✓	✓	
10 U.S. Gallons			✓
0.1 Cubic Feet	✓	✓	
1 Cubic Feet			✓
0.01 Cubic Metres	✓	✓	
0.1 Cubic Metres			✓

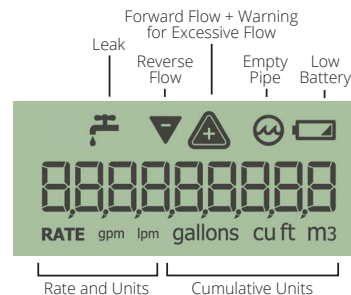
## Pressure Loss

This chart shows typical meter performance. Individual results may vary.



## LCD Display

9-digit display for extra resolution on manual reads.



neptunetg.com

Neptune Technology Group  
1600 Alabama Highway 229  
Talladega, AL 36078  
800-633-8754 f 334-283-7293