

# ST-116L

Skipsteknisk 

74.7 Stern Trawler for owner Volstad AS

> Volstad



**ST-design** <sup>®</sup>  
- freedom to create

[www.skipsteknisk.no](http://www.skipsteknisk.no)

# ST-116L

74.7 Stern Trawler for owner Volstad AS  
Volstad

## GENERAL

"Volstad", designated ST-116L, is a Freezer Trawler / Stern Trawler built at Tersan Shipyard AS, Turkey, yard no. 1020 for owner Volstad AS, Norway. It was delivered in 2013.

The vessel is designed and purpose built for the following duties:

- Bottom and mid-water trawling with single and twin gear
- On-board processing and freezing of catch
- Efficient operation in ice and arctic waters

## Tank capacities

- Fuel oil: approx. 600 m<sup>3</sup>
- Urea: approx. 40 m<sup>3</sup>
- Potable fresh water: approx. 40 m<sup>3</sup>
- Technical fresh water (fore peak): approx. 90 m<sup>3</sup>
- Freezer cargo hold: approx. 1700 m<sup>3</sup>
- Refrigerated hold / fish meal store main deck: approx. 240 m<sup>3</sup>

## Antirolling tank

One passive antirolling tank

## Class

DNV +1A1, Ice 1C, Stern Trawler, E0 (Hull ice-reinforced in accordance to DNV +1A1-Ice 1B)

## Speed

- In ballast condition: approx. 14.5 knots

## Accommodation

- Arranged for 32 persons in single and twin cabins with separate bathrooms
- Hospital

## Propulsion system

- 1 x Wärtsilä 9L32 main engine: 4500 kW / 750 rpm
- 1 x main Wärtsilä C.P.P. propeller: ø 3800 mm
- 1 x main reduction gear, single in single out, with one PTO for shaft alternator

## Auxiliary diesel engines

- 1 x Caterpillar C32 910 kW @ 1800 rpm
- 1 x Caterpillar 450 kW @ 1800 rpm

## Shaft alternator

- 1 x shaft alternator PTO driven av 1200 rpm, 2340 kVA

## Emergency / harbour generator aggregate

- 1 x 199 kW @ 1800 rpm

## Bow thruster

- 1 x electric powered transverse bow thruster: 650 kW

## Rudder

- 1 x flap rudder
- 1 x electric hydraulic steering gear

## Navigation and radio communication

- 2 x ARPA radars, 10 cm and 3 cm
- 1 x gyro
- 1 x auto pilot
- 2 x GPS standard
- 1 GPS differential
- 2 x echo sounders
- 2 x videoplotters / trackplotters
- 1 x catch control system
- 1 x speed log
- 2 x satellite communication systems
- 3 x VHF
- Vingtor PA-system
- Further communication system in full compliance with GMDSS requirements

## Deck equipment

Vessel is equipped with deck and fishing winches.

- 1 x anchor windlass
- 1 x capstan
- 2 x trawl winches: approx. 50 tons each
- 1 x 3rd trawl winch: approx. 50 tons each
- 8 x sweepline winches: approx. 13 tons each
- 2 x Gilson winches: approx. 20 tons each
- 1 x outhaul winch: approx. 12 tons
- 2 x cod-end winches: approx. 12 tons each
- 3 x net storage drums
- Automatic trawl operation system

## Cranes

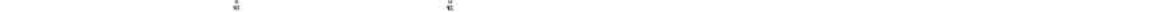
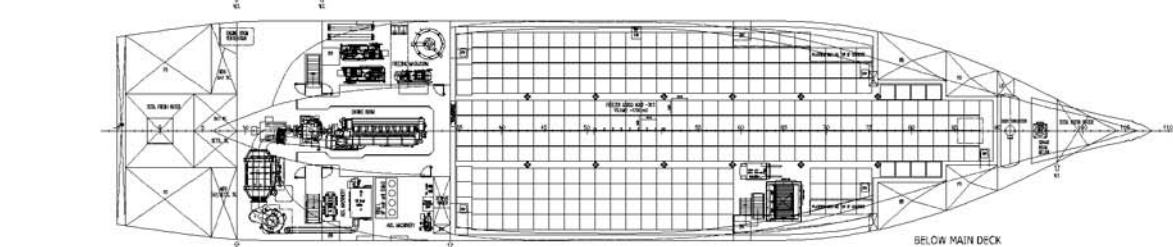
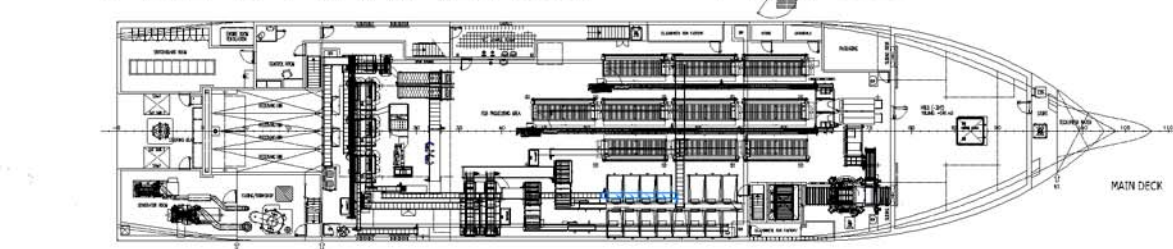
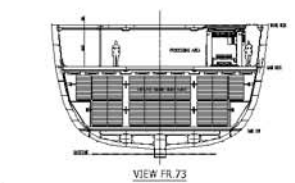
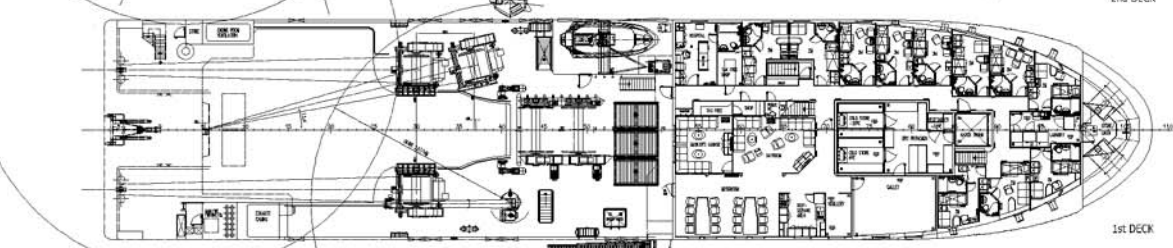
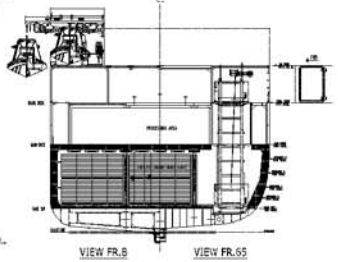
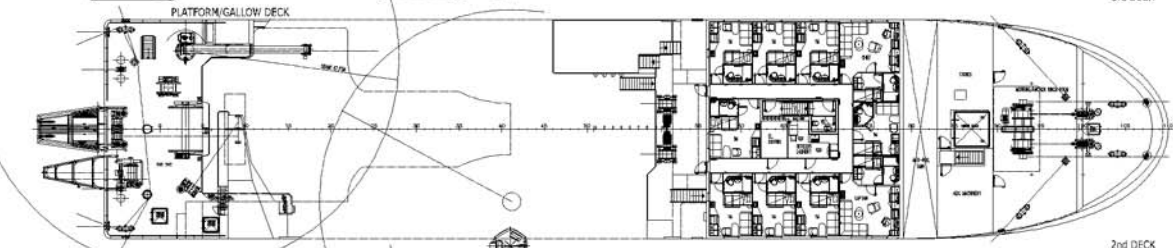
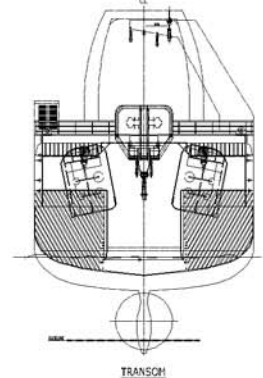
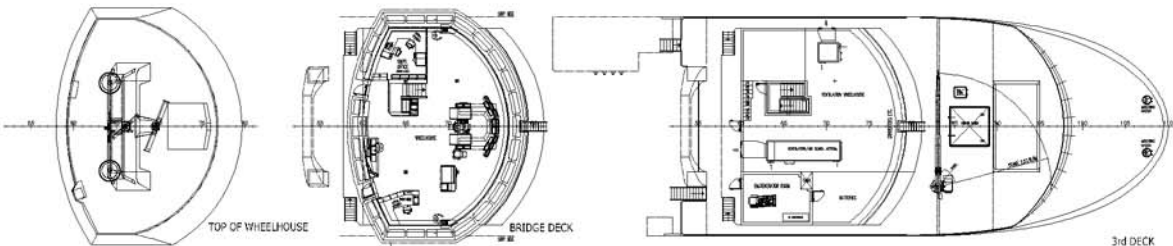
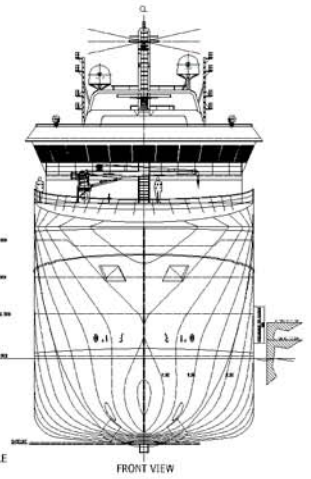
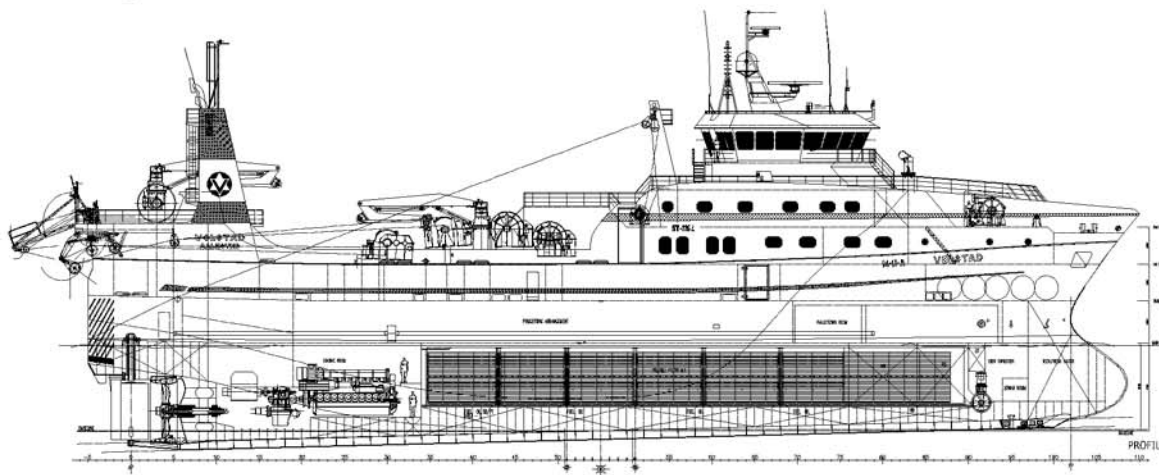
- 1 x deck crane: approx. 6 tons / 15 m
- 1 x deck crane: approx. 3 tons / 13.5 m
- 1 x deck crane: approx. 2.5 tons / 8 m

## Processing equipment

The vessel is outfitted with a fully integrated onboard grading, processing and freezing system

## Safety equipment

- 1 x MOB boat
- Safety equipment according to regulations for the specified class and number of crew



**ST-design** ®

GENUINE SHIP DESIGN - *freedom to create*

---

HAVNEVIK



---

SKIPSTEKNISK AS | Klaus Nilsens gt. 4, P.O.Box 36 Sentrum, NO-6001 Aalesund, Norway  
PHONE +47 70 10 33 44 | FAX +47 70 10 33 48 | office@skipsteknisk.no | www.skipsteknisk.no

Skipsteknisk 

---