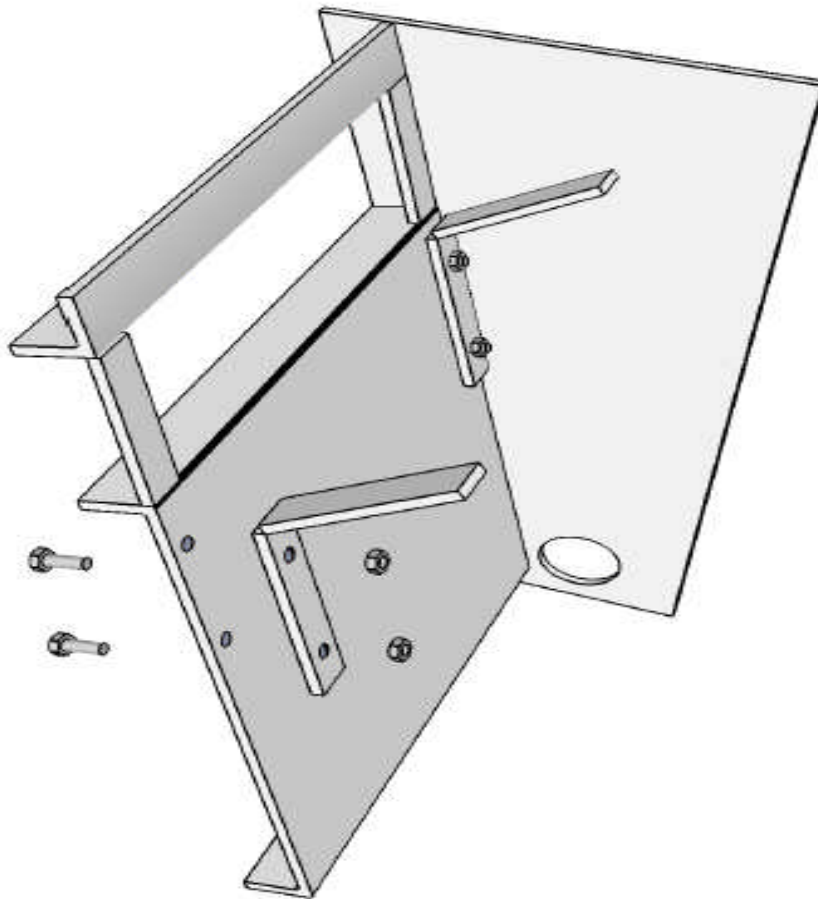


Thermo-Control[®]

The ultimate wood burning system.



Instructions for Baffle Bypass Door Bolt On Replacement

1. Remove chimney connector (stovepipe).
2. Through smoke outlet, remove old hinges with hammer and chisel.
3. Place brackets against front of baffle and mark holes for drilling.
4. Drill marked holes.
5. Place brackets on back side of baffle, aligning drilled holes.
6. Secure with bolts provided.