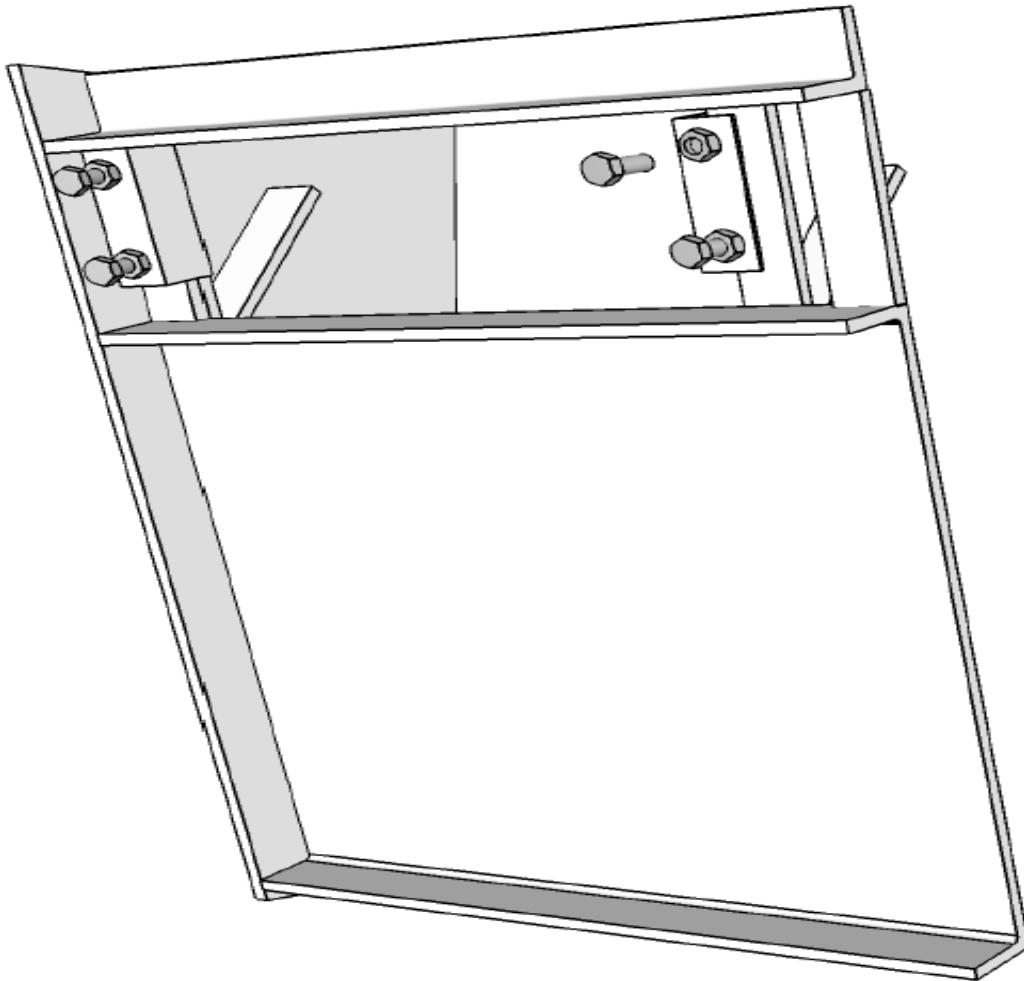


Thermo-Control[®]

The ultimate wood burning system.



Instructions for Baffle Bypass Door Clamp On Replacement

1. Remove chimney connector (stovepipe).
2. Through smoke outlet, remove old hinges with hammer and chisel.
3. Place new brackets in baffle bypass opening as shown in illustration.
4. Secure with bolts provided.