

**Runecast Analyzer** helps you to avoid outages, mitigate risks, and ensure compliance with your necessary security standards. You get a patented AI engine that converts industry sources of information into machine-readable data. This data is processed on the Runecast Analyzer appliance, which then scans your VMware and AWS environments for hidden problems, deviations from best practices, and non-compliance with the security frameworks that you select.

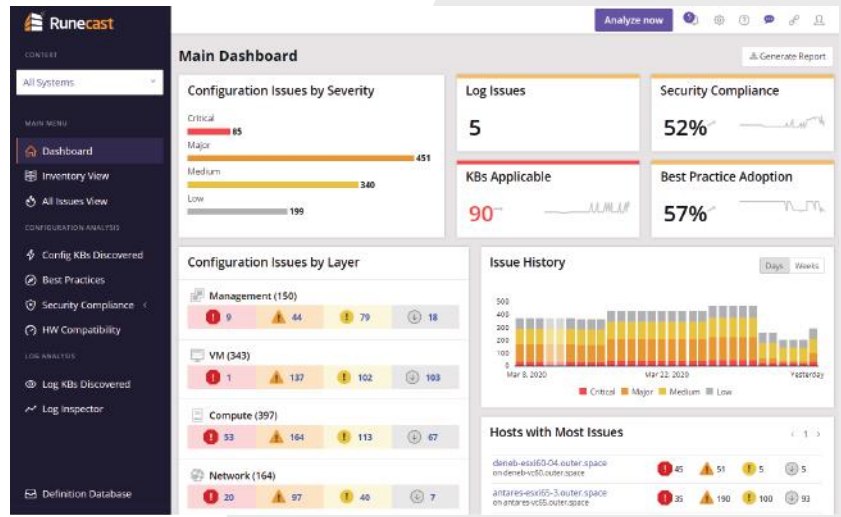
The appliance is provided as an industry-standard OVA, and you can be up and running with actionable insights in minutes.

**SUPPORTED PRODUCTS:**

AWS – AWS Config, AWS Health, Cloudfront, Cloudtrail, Cloudwatch, EC2, IAM, RDS, Redshift, S3, VPC, AWS Inspector, EFS, Kinesis, Lambda

VMware – vSphere 5.x+ (fully supports vSphere 7), vSAN, NSX-V 6.2+, Horizon 6.x+

Kubernetes, PureStorage SAP HANA on VMware



**Key Features**

**ISSUE PREVENTION**

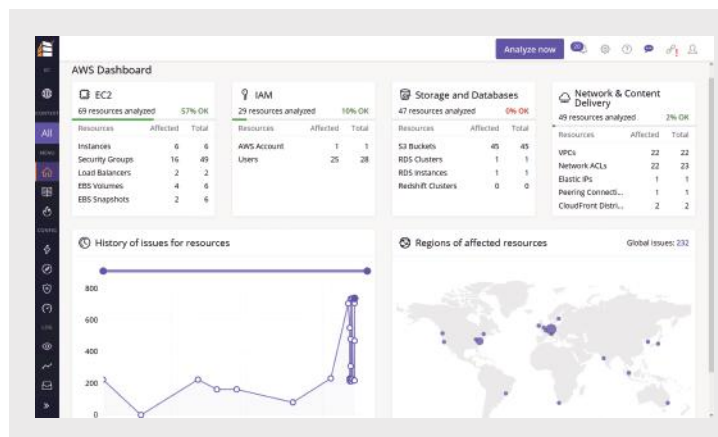
continuously check your environment for configuration problems against known issues, best practices & security compliance standards. This provides insights that help you to stabilize and secure both your VMware and also native AWS infrastructure.

**LOG ANALYTICS**

continuously monitor ESXi host & VM log files for problems, showing you how to resolve issues quickly.

**RUNS FULLY ON-PREMISES**

all analysis is run locally on the Runecast Analyzer appliance, meaning no data is sent outside of your control. It can operate entirely disconnected from the internet, with updates applied out-of-band. Of course, if you can connect to the internet then you can pull updates automatically from our online repository.



**SECURITY COMPLIANCE**

continuously evaluate your compliance against BS1 IT-Grundschutz, CIS CSC, DISA STIG6, HIPAA, NIST 800-53, GDPR and PCI-DSS. Runecast Analyzer is CIS Certified for both vSphere and AWS.

**UPGRADE SIMULATIONS**

validate your hardware, drivers, and firmware against current and upstream releases of ESXi.

# System Requirements

Full system requirements are documented in the Runecast User Guide, however, Runecast Analyzer is deployed as a virtual appliance to your VMware SDDC, and resource requirements are as follows.

Size	CPU	RAM (Gb)	Disk (Gb)	Network (Mbps)
<b>Small</b> (up to 50 hosts)	2	4	120	100 (1Gb rec.)
<b>Medium</b> (up to 150 hosts)	4	8	120	100 (1Gb rec.)
<b>Large</b> (up to 1200 hosts)	8	32	120	100 (1Gb rec.)

Network communications between Runecast Analyzer, vCenter Server, ESXi, NSX Manager, Horizon Connection Servers, and the AWS APIs all take place over a secure HTTPS connection (TCP 443). ESXi communication to Runecast Analyzer for Syslog communication runs over the standard Syslog port (UDP 514).



When Runecast Analyser is allowed to perform online updates these are also pulled over HTTPS from <https://updates.runecast.com>



Full port requirements are detailed in the Runecast User Guide, which can be found at <https://runecast.com/RunecastUserGuide.pdf>

## Required Privileges

The majority of Runecast Analyzer's reporting capabilities can be achieved using an account with Read-Only permissions within vCenter Server, however, in order to utilize some features, extra privileges may be required. These are detailed in the Runecast User Guide, which can be found at <https://runecast.com/RunecastUserGuide.pdf>. A PowerCLI script is provided on our [Github page](#) to automate the creation of this role if required.



## Want to learn more?

For further information, to download a demo or to set up a call to further discuss Runecast Analyzer with our team of experts please visit [www.runecast.com](http://www.runecast.com) or email us at [innovate@runecast.com](mailto:innovate@runecast.com). We look forward to speaking with you!