



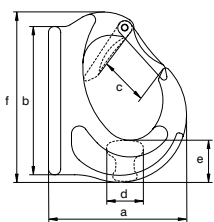
Green Pin® Excavator Hook GR8

Grade 8 excavator hook

- **Material:** alloy steel, grade 8, quenched and tempered
- **Safety factor:** MBL equals 4 x WLL
- **Finish:** painted yellow (J) or white
- **Temperature range:** -40°C up to +200°C
- **Certification:** 2.1 2.2 MPI^b
- **Note:** welding must be done in accordance with DIN 5817 resp. 15429, by a qualified welder according to EN 287-1



GH



working load limit	width	length	width opening	thickness	width	length	width	width	weight each
t	a mm	b mm	c mm	d mm	e mm	f mm	g mm	h mm	kg
1	72	78	25	19	28	108	31	26	0.52
2	91	83	33	20	28	113	31	34	0.7
3	105	105	33	26	32	129	31	34	1.15
4	121	130	35	27	37	148	41	38	1.66
5	138	149	43	28	45	167	41	44	2.36
8	145	148	43	41	52	173	41	51	3.32
10	178	197	60	46	61	227	50	66	6.44
15	185	223	65	60	70	251	55	80	9.7

INFO



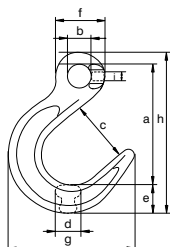
Green Pin® Foundry Hook E GR8

Grade 8 eye foundry hook

- **Material:** alloy steel, grade 8, quenched and tempered
- **Safety factor:** MBL equals 4 x WLL
- **Finish:** painted yellow (J), red (R) or white
- **Temperature range:** -40°C up to +200°C
- **Certification:** 2.1 2.2 3.1 * MPI^b * DGUV *
- **Note:** from 8.2 t without flat part



CFO



for chain diameter		working load limit	length	diameter eye inside	width opening	thickness	width	diameter eye outside	width outside	length	thickness	weight each
mm	inch	t	a mm	b mm	c mm	d mm	e mm	f mm	g mm	h mm	i mm	kg
6	7/32	1.12	93	18	47	17	22	38	97	125	7	0.33
7 - 8	1/4 - 5/16	2	124	24	63	22	30	51	129	166	9	0.78
10	3/8	3.2	157	33	79	28	36	66	160	208	11	1.5
13	1/2	5.4	190	44	93	36	46	85	198	256	14	3
16	5/8	8.2	205	35	95	45	52	88	204	284	24	4.2
18 - 20	3/4	12.8	235	40	111	53	55	92	228	315	25	7.8
22	7/8	15.5	265	46	123	66	71	110	258	268	32	9.9
26	1	21.6	305	54	133	65	81	120	277	420	33	13.8
32	1 1/4	32.8	327	60	155	84	96	131	333	459	35	24.5

* Excluding sizes 16 mm, 18/20 mm, 22 mm, 26 mm and 32 mm