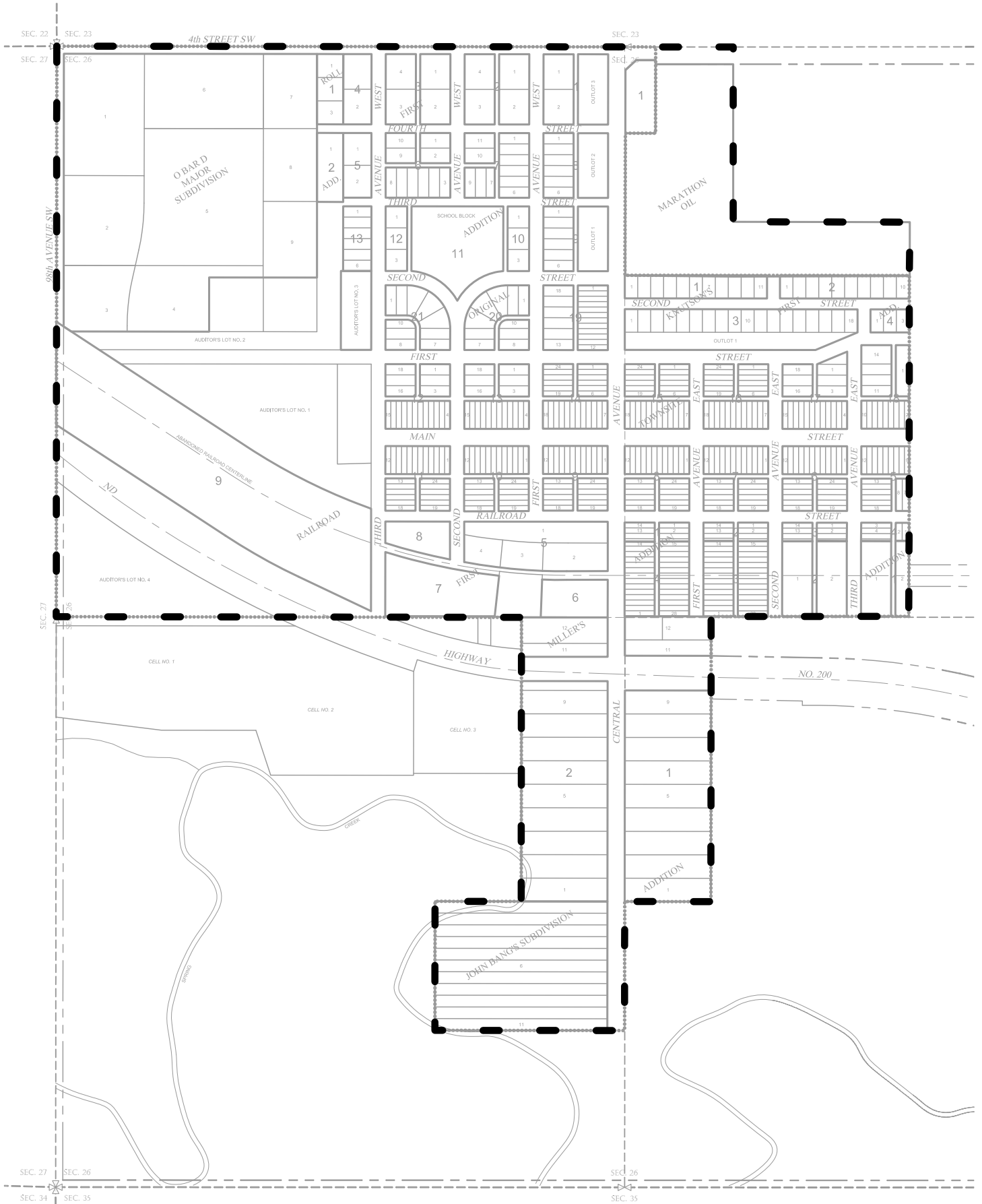


# CITY OF DUNN CENTER OVERALL MAP

A MAP/EXHIBIT OF EXISTING LAND TRACTS IN THE CITY OF DUNN CENTER SECTION 26, TOWNSHIP 145 NORTH, RANGE 94 WEST, DUNN COUNTY, NORTH DAKOTA.

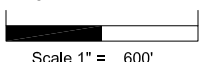


## Map Legend

- HWY 200 R.O.W.
- HWY 200 Centerline
- - - Section Line
- Boundary Line of Area of Project
- ⊗ Section
- ⊗ Section Corner
- City Limits



BASIS OF BEARING  
Geodetic North @  
NGS OPUS Position  
Lat N 47d 21' 11.7858"  
Long. W 102d 37' 48.12351"



Scale 1" = 600'



12 W. Main, Suite B  
Dunn Center, ND 58626  
701.347.1662 Office  
www.circ-h.com



DRAWN BY: CPR  
DATE: 06/29/2011  
PROJECT NO. 111619  
FILE NAME: CITY-MAP

DUNN CENTER  
— NORTH DAKOTA —