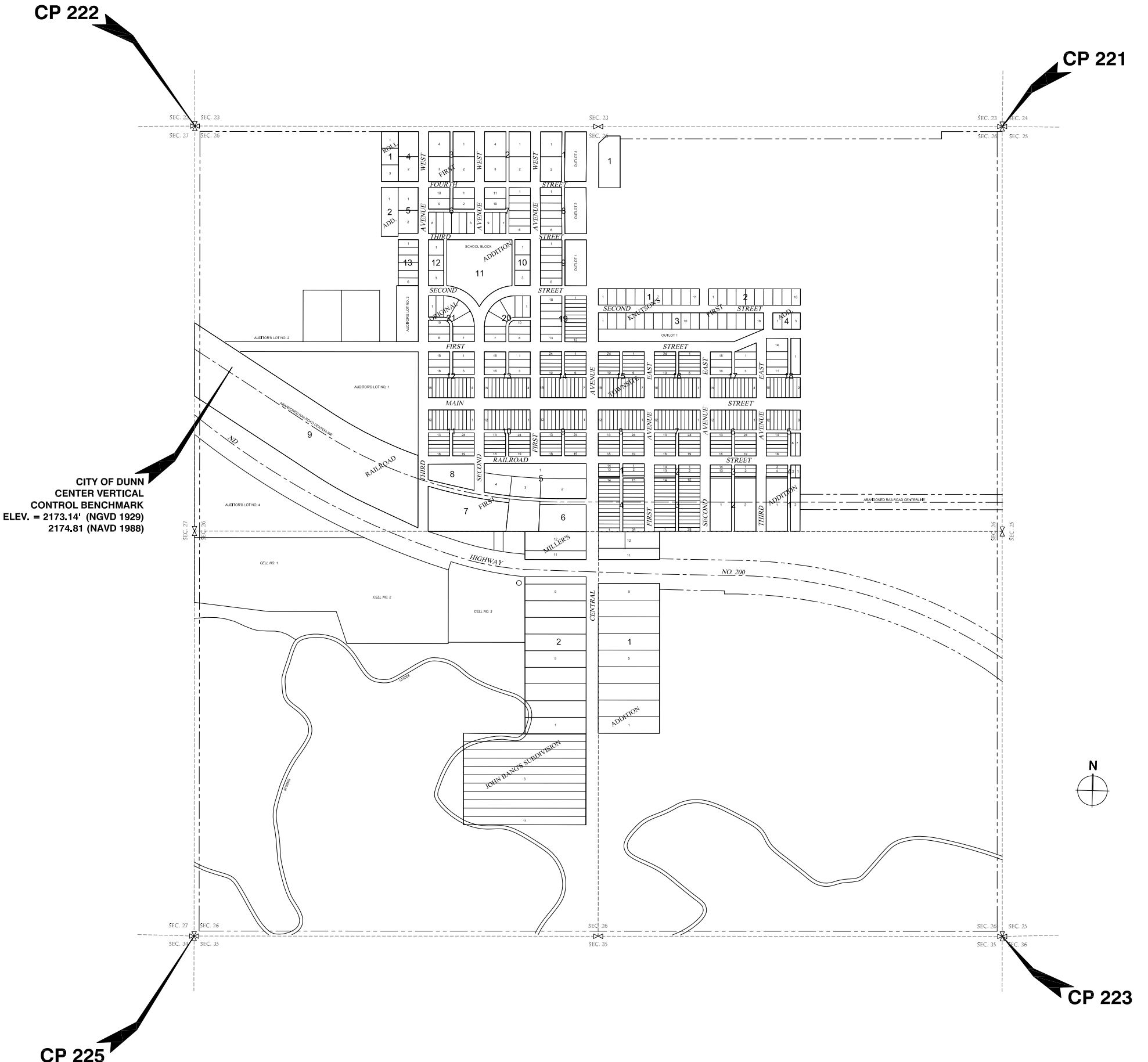


# DUNN CENTER

## NORTH DAKOTA

### PREFERRED COORDINATE SYSTEM INFORMATION FOR ENGINEERING AND SURVEYING PROJECTS IN THE CITY LIMITS



**NOTE:**

THE ABOVE NORTHING AND EASTING COORDINATES FOR THE SECTION CORNERS SHOULD BE USED TO DEFINE A PSEUDO STATE PLANE COORDINATE SYSTEM (ND SPC SOUTH) THAT IS A GROUND (NOT GRID) COORDINATE SYSTEM THAT IS ONLY A TRUE SPC COORDINATE AT G82. THE INTENT OF PROVIDING THIS INFORMATION IS TO ENABLE ALL ENGINEERING AND SURVEYING PROJECTS (INCLUDING SUBDIVISIONS) TO BE COMPLETED ON A COMMON COORDINATE SYSTEM FOR THE CITY OF DUNN CENTER. THE PREFERRED ELEVATION DATUM FOR THE CITY IS THE NGVD1929.