

mondo single



black: color code BL



cloud: color code CW

mondo single with lid



leaf: color code LG



apple: color code AR

mondo double



driftwood: color code DW



navy blue: color code NB

charcoal: color code CG

similar planters:

rectangle,
square,
& taper



collection:

planter

material:

100% recycled
HDPE



product details: see backside



flat pack shipped
some assembly required



sky: color code SB



sunset: color code OR



single



SKU: FC-MS14G-(color code)

dimensions:

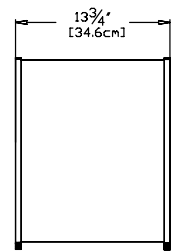
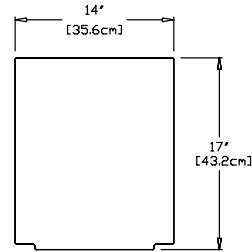
width: 14" (35.6cm)
 depth: 13.75" (34.6cm)
 height: 17" (43.2cm)

weight:

18 lbs (8.2kg)



144
 reclaimed
 milk jugs



shipping dimensions: 18" x 18" x 4"
shipping weight: 21 lbs (9.5kg)

single with lid



SKU: FC-MS14G-L-(color code)

dimensions:

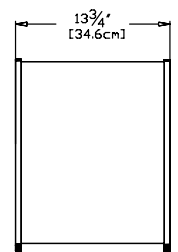
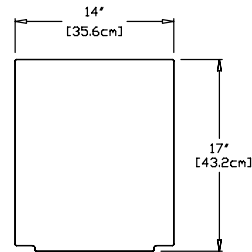
width: 14.75" (37.1cm)
 depth: 15.75" (39.7cm)
 height: 14" (35.6cm)

weight:

21 lbs (9.6kg)



168
 reclaimed
 milk jugs



shipping dimensions: 18" x 18" x 4"
shipping weight: 24 lbs (10.9kg)

double



SKU: FC-MD28G-(color code)

dimensions:

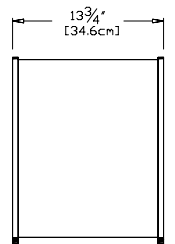
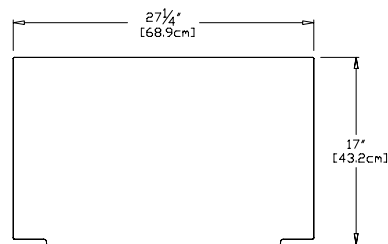
width: 27.25" (68.9cm)
 depth: 13.75" (34.6cm)
 height: 17" (43.2cm)

weight:

27 lbs (12.2kg)



216
 reclaimed
 milk jugs



shipping dimensions: 28" x 17" x 5"
shipping weight: 33 lbs (15.0kg)

