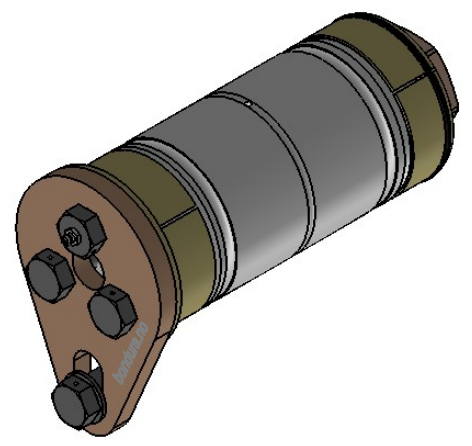
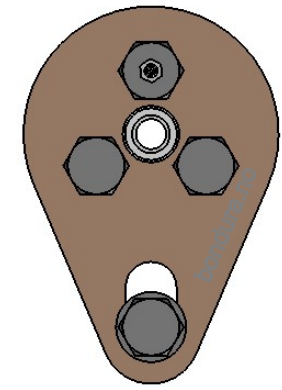
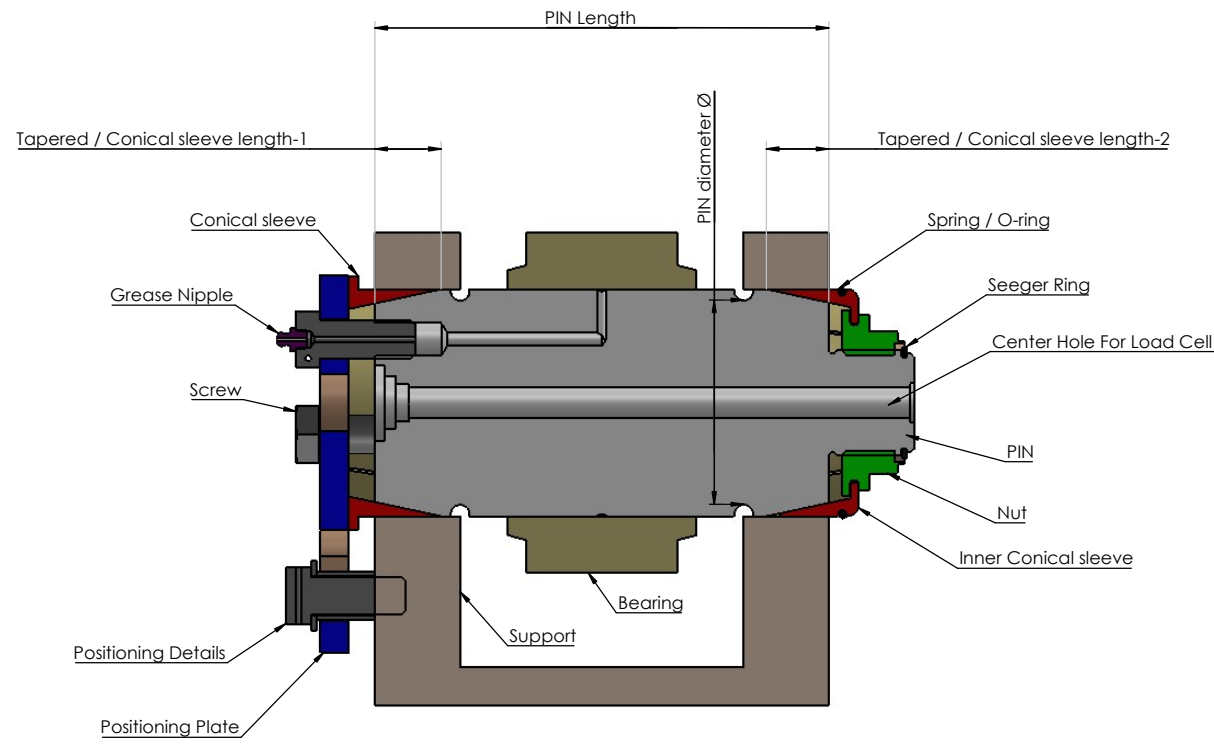


REVISIONS TABLE			
REV.	DESCRIPTION	DATE	APPROVED
A	For DNV Approval 2017	07.11.2017	ØK



Detailed explanation of a bondura® assembly, as per Bondura Technology's Material Traceability List

Example: bondura 6.2-LC.120.0240.L-35.33

bondura® type: 6.2-LC
 PIN diameter: Ø120 mm
 PIN length: 240 mm
 lubrication: L= single lubrication
 D= double lubrication
 U= without lubrication

Tapered / Conical sleeve length-1: 35 mm
 Tapered / Conical sleeve length-2: 33 mm

		The bondura® pivot pin is a patented product and is thus protected under patent legislations and product rights.	
Date: 07.11.2017	Drawn by: Tor	App. by: ØK	Project used:
Product Description: bondura 6.2-LC Ø55-Ø500 (Load Cell)		Size: A2	Sheet: 1 of 1
GENERAL ARRANGEMENT		Drawing No.: GA-0364	Revision: A
Material:	Weight: 36.02 kg	Ref. to:	Module: Art no: Status: Approved