

# GRIZZLY RANCH CONSERVANCY

GUARDIANSHIP \* STEWARDSHIP \* KNOWLEDGE

Term: Spring | Issue 1 | Date: June 17, 2020

WWW.GRIZZLYRANCHCONSERVANCY.COM

## MEET THE BOARD



**Andy Norris,  
President**

As a founding partner of Grizzly Ranch in 1999, Andy's aspirations for the Conservancy went beyond its legal

obligations. His involvement as a Board member since 2004 has focused on supporting the Conservancy in its efforts to provide educational, cultural and recreational opportunities to the Grizzly Ranch community.

### Jack Bridge



Jack was instrumental in establishing the Grizzly Ranch Conservancy by identifying sensitive lands such as wetlands and springs to be placed under Conservancy stewardship. Jack looks forward to carrying forth the initial purpose and vision he has been supporting since 2004.

### Kathy Roberts



Kathy is new to the Conservancy Board. She and her husband Mark retired and moved to Grizzly Ranch in 2017 from the east coast and are full time residents in Grizzly Ranch. Kathy is looking forward to helping the Conservancy with improvements to the Grizzly Ranch hiking trails.

### Melissa Pennington



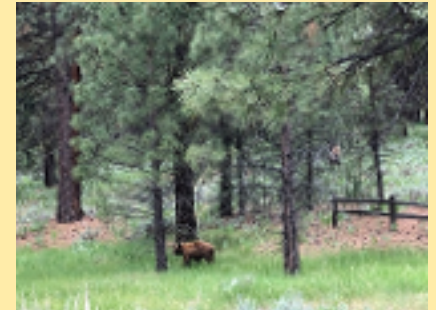
Raised in Southern California, Melissa attended UCLA, receiving a B.S. in biology before being licensed as a registered nurse. After working at UCLA in pediatrics, she raised two children and focused on philanthropic organizations. With her husband of 53 years, she splits her time between Los Angeles, Grizzly Ranch and Minneapolis, home to her four grandchildren.

### Donna Lindquist Executive Director



Donna has worked with the Board since 2006 to develop and manage Conservancy Projects and to conduct administration duties to comply with state mandated non-profit requirements. She was instrumental in developing hiking trails, supporting production of the Grizzly Ranch Landscapes book, and planning amenities for the enjoyment of Grizzly Ranch owners. She has BS and MS degrees from Cal in biology and watershed science and enjoys working outdoors on environmental projects.

## SPRING SIGHTINGS



Black Bear ambling down Grizzly Road



Mule's Ears in all their glory



Sandhill Cranes

Osprey



Cooper's Hawks

## UPCOMING EVENTS

**Weekend of August 8, 2020. Summer Happy Hour gathering** with a raffle to benefit GRC's trail maintenance (event depending on COVID restrictions).

**August 9, 2020. Grizzly Ranch Firewise Day**



# LET'S BE FIREWISE

## Grizzly Ranch Firewise USA Committee

The Grizzly Ranch Firewise USA Committee continues work towards making our community safer in the event of a wildland fire. We are celebrating our fifth year as a certified Firewise USA Community. This certification requires annual education and investments in reducing hazardous fuels within community. These efforts have resulted in a safer community and in some cases lower insurance rates for our homeowners. Firewise USA is a national program of over 1500 communities working to reduce the loss of property and lives due to fires within the wildland urban interface. You can get more information on Firewise USA at this link: <https://www.nfpa.org/>

[Public-Education/Fire-causes-and-risks/Wildfire/Firewise-USA](https://www.nfpa.org/Public-Education/Fire-causes-and-risks/Wildfire/Firewise-USA)

The Committee will be focusing on three major objectives for 2020. The first is making the homes within Grizzly Ranch safer by focusing on both "home hardening" and the cleanup of the "ignition zone" around the home. Second, ensure residents and guests are prepared to safely evacuate in the event of an approaching wildfire. This includes information and training on being prepared for this possible event. Lastly working with all property owners (homes and home sites) to reduce the hazardous fuels within the community. This includes managing the Plumas County Fire Safe Council sponsored no cost curb-side chipping program.

SAVE THE DATE: 8/9/20

Grizzly Ranch Firewise Day is currently scheduled for Sunday, August 9th. Timing and the agenda will be published at a later date.

# TRAIL NEWS



John Reynolds, Dan Davis, Rob Thayer, Tim Rhode, Whit Thorton, and Kathy & Mark Roberts have generously been volunteering their time and efforts to improve the Buck's Pass Trail for the Grizzly Ranch community to enjoy. To better access to Buck's Pass trailhead, they have built a bridge from Spring Meadow Drive to connect to the beginning of the trail. To make the steep sections of

the trail easier to climb, they have added both rock and log steps. Buck's Pass Trail is a community favorite thanks to the beautiful views of the mountains, Sierra Valley, and of the Grizzly Ranch golf course.

These photos of their work beckon us to get out there and enjoy their work! The community and Conservancy thanks this group of volunteers for being such great stewards of our trails. To join future trail improvement projects, please contact Mark Roberts at 610-209-9659 or [kmkbroberts@gmail.com](mailto:kmkbroberts@gmail.com).



## CREEK PRESERVE COMES TO GRIZZLY RANCH CONSERVANCY



Sally Peak Investors acquired all of Grizzly Ranch Investors unplatted land (430+ acres) in early 2020. Included in that acreage was the 12 acre Creek Preserve which was connected to three adjacent parcels commercially designated by the Planned Development Permit. To "gift" the Creek Preserve parcel to the Conservancy, Sally Peak Investors has been working with Plumas County to separate

the parcels with a lot line adjustment. Approval for this adjustment has recently been granted and the Preserve will soon be under the Conservancy's stewardship. The Creek Preserve is designated Open Space and may be used for "soft" amenities such as trails in the future. The Conservancy will apply for a tax exemption with the County once the transfer is complete.