

**FLOOR**



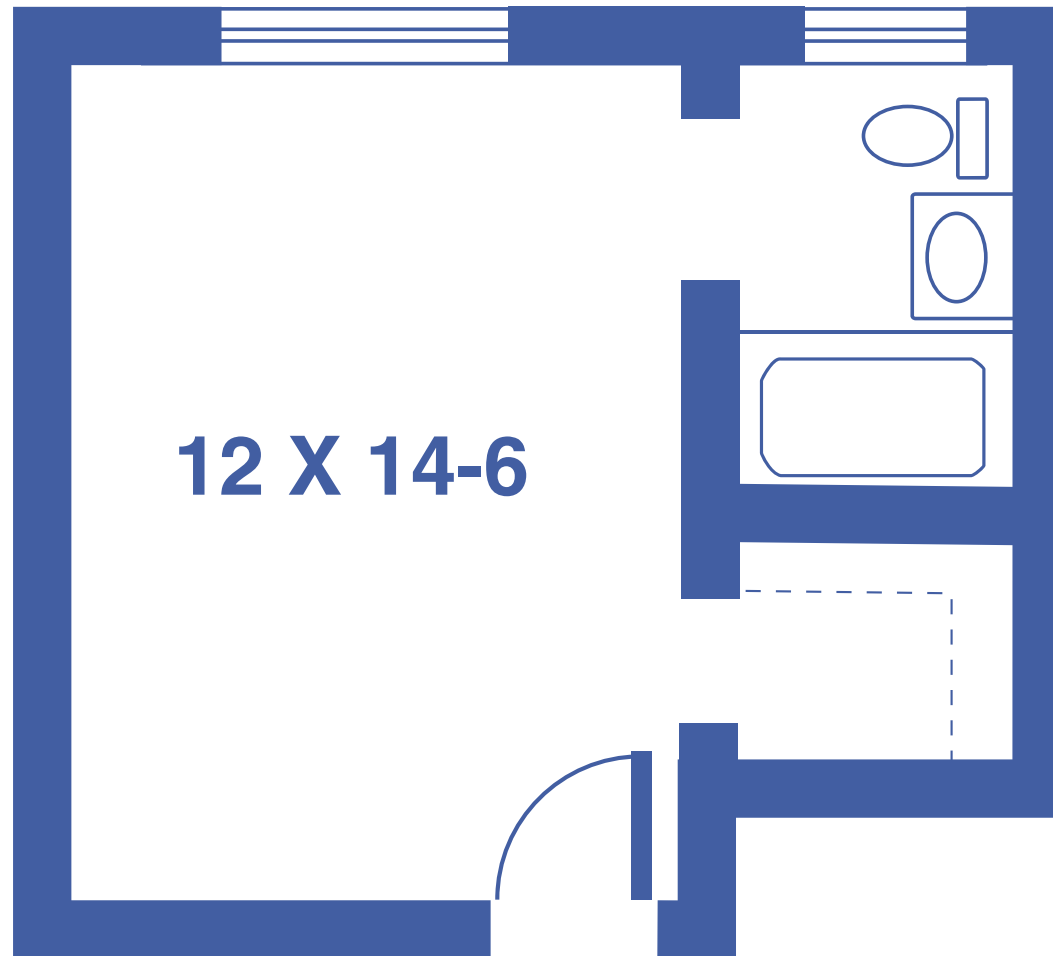
**PLANS**



**TOPEKA**  
Presbyterian Manor®

# STUDIO A

240 SQUARE FEET

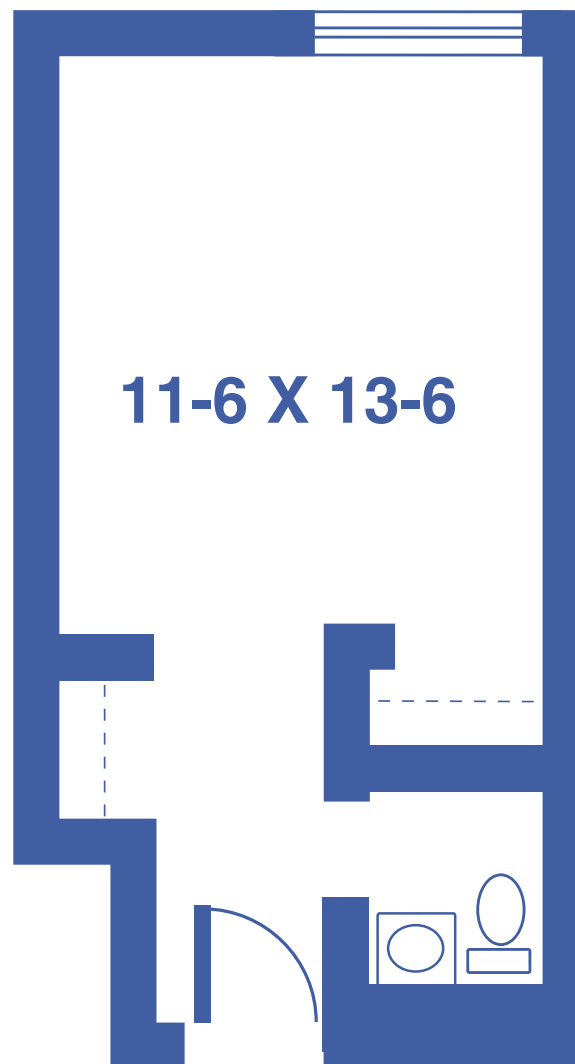


*Floor plans may vary slightly and are not to scale.*



# STUDIO B

260 SQUARE FEET

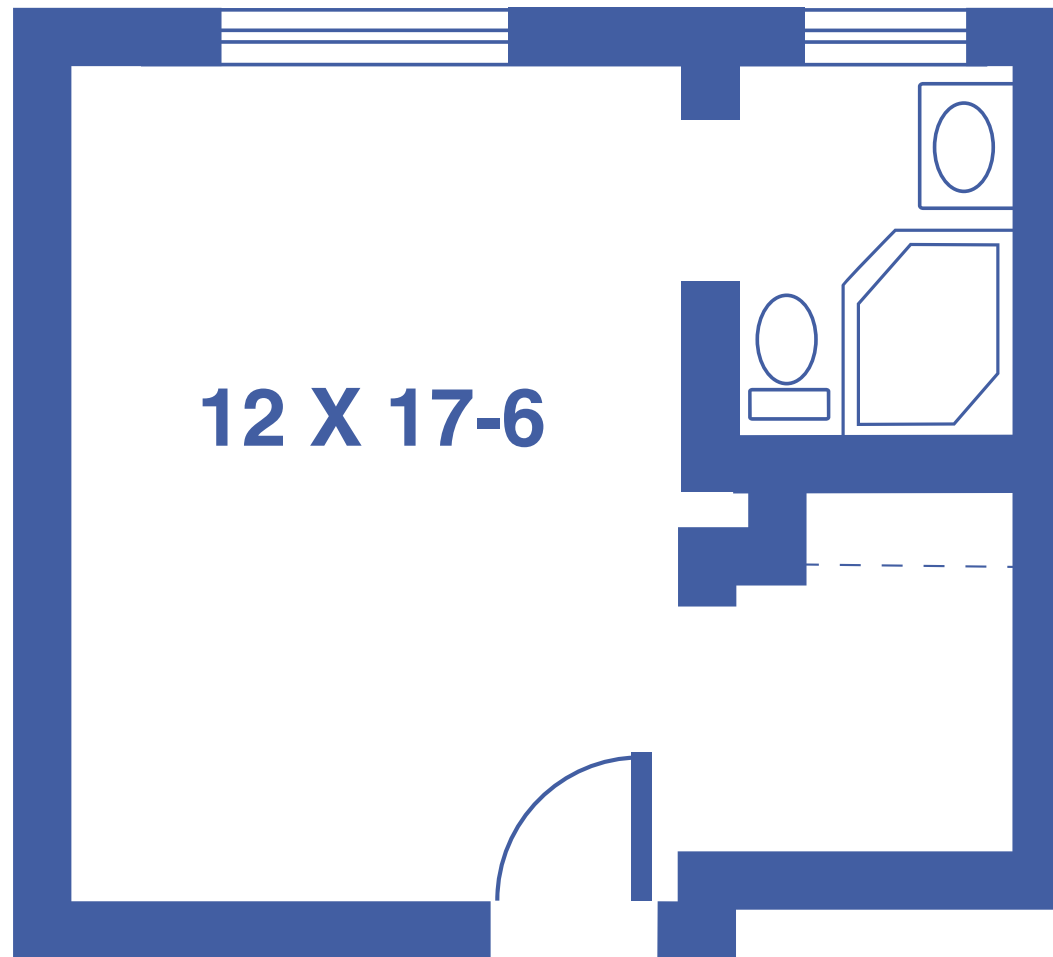


*Floor plans may vary slightly and are not to scale.*



# LARGE STUDIO A

285 SQUARE FEET

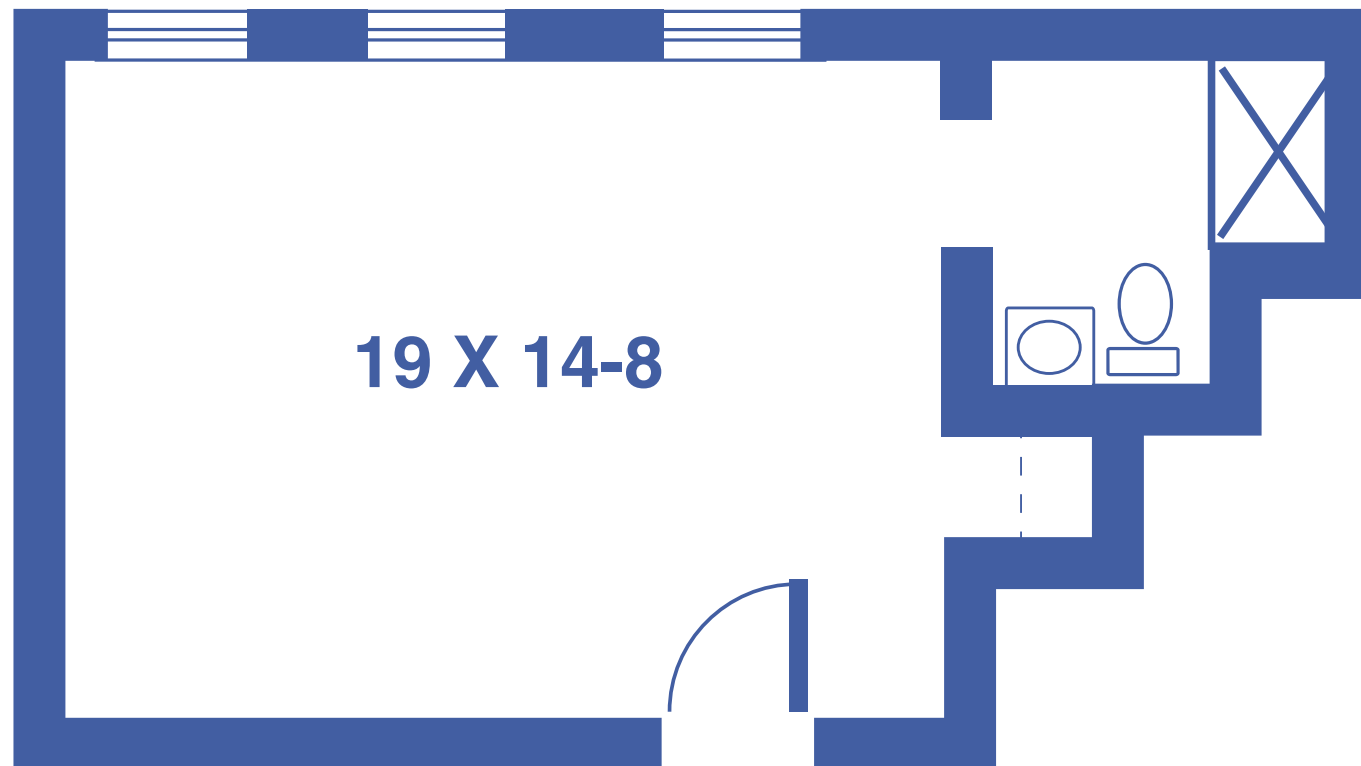


*Floor plans may vary slightly and are not to scale.*



# LARGE STUDIO B

320 SQUARE FEET

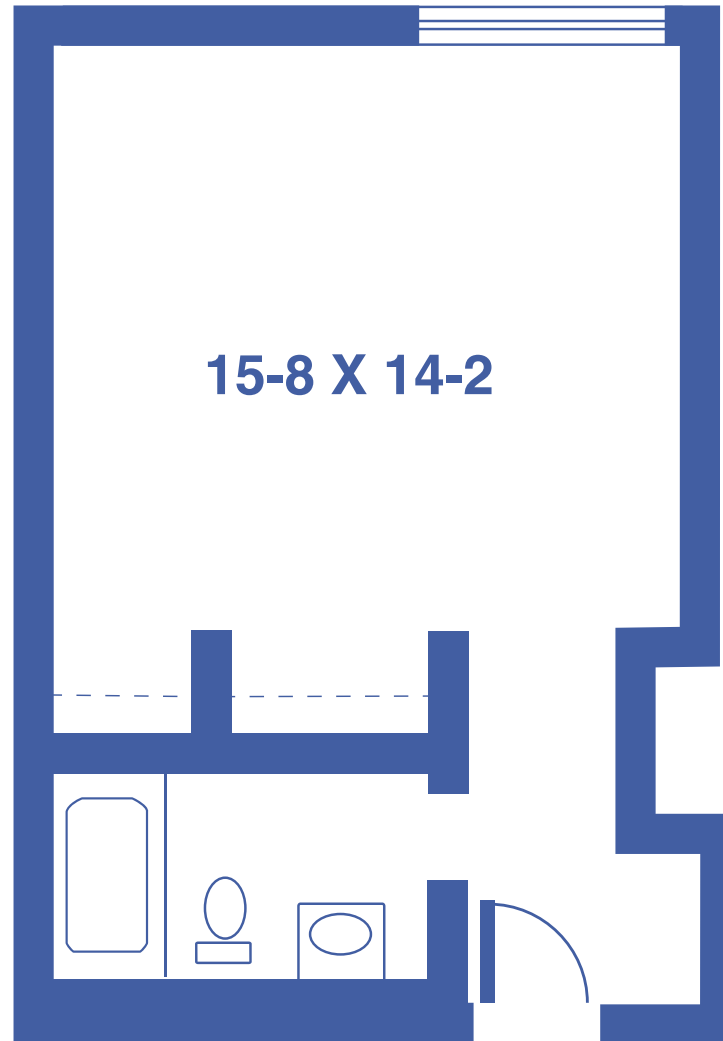


*Floor plans may vary slightly and are not to scale.*



# LARGE STUDIO C

340 SQUARE FEET

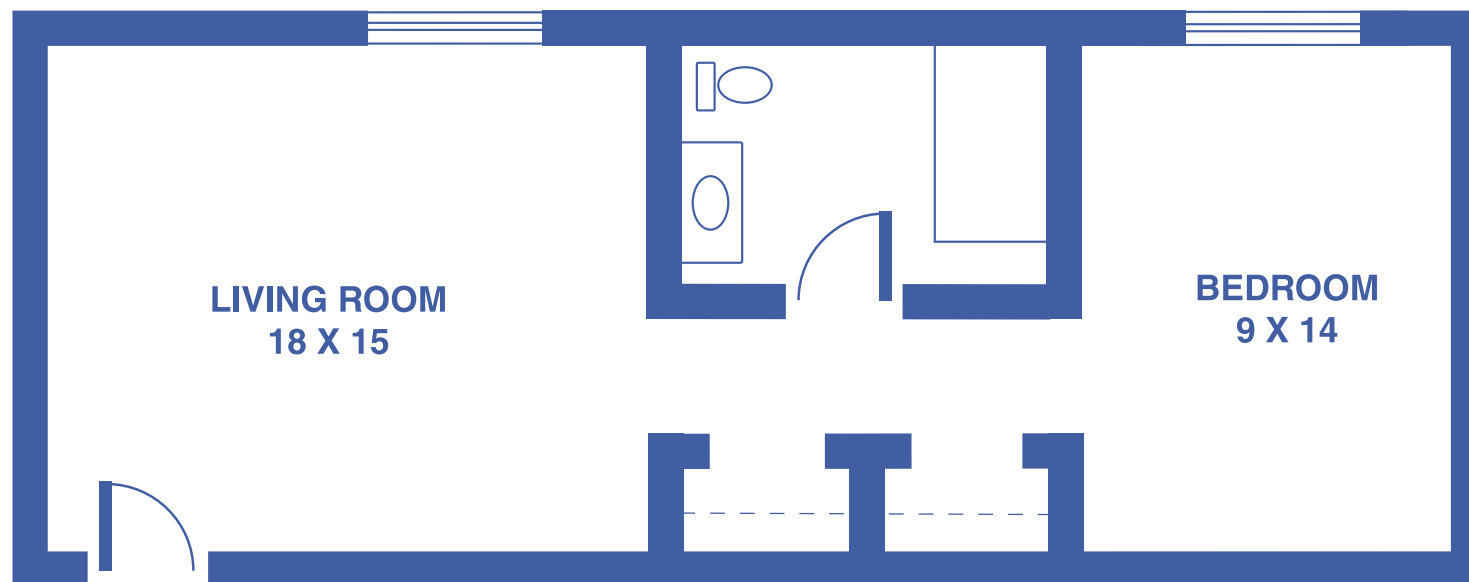


*Floor plans may vary slightly and are not to scale.*



# ONE-BEDROOM A

WITHOUT KITCHENETTE / 501 SQUARE FEET



*Floor plans may vary slightly and are not to scale.*



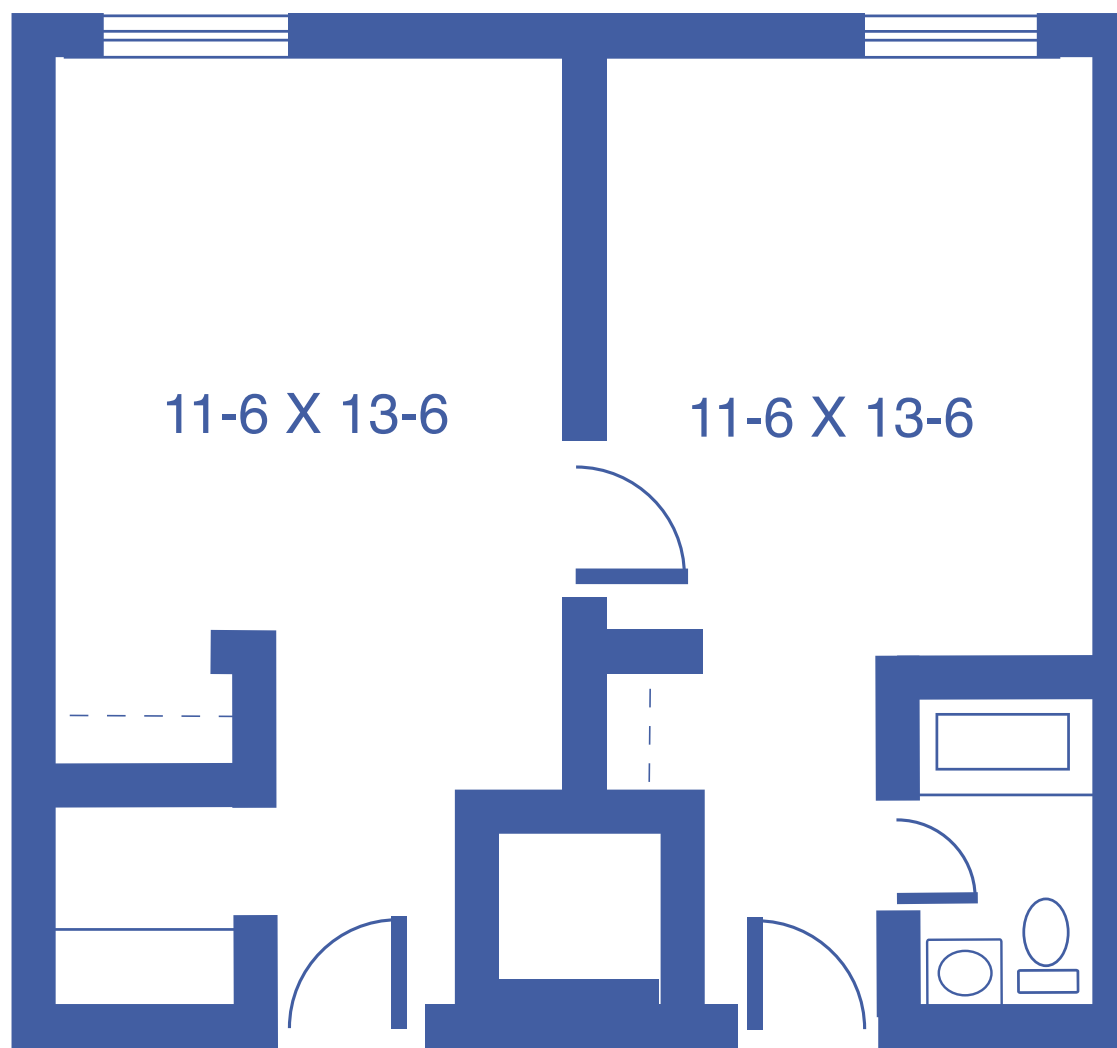
4712 SW 6TH AVE, TOPEKA, KS 66606 • [WWW.TOPEKAPRESBYTERIANMANOR.ORG](http://WWW.TOPEKAPRESBYTERIANMANOR.ORG)



**TOPEKA**  
Presbyterian Manor®

# ONE-BEDROOM B

WITHOUT KITCHENETTE / 520 SQUARE FEET



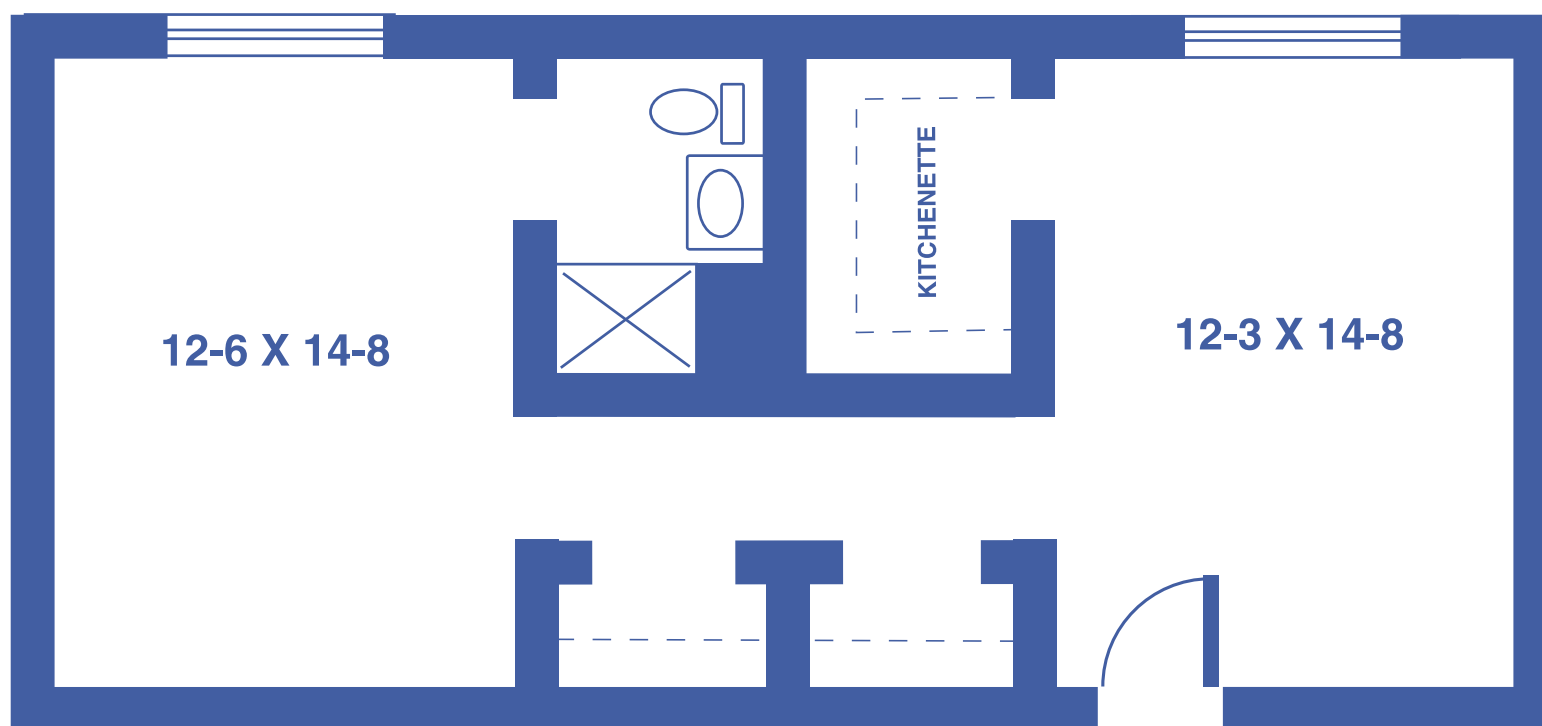
*Floor plans may vary slightly and are not to scale.*





# LARGE ONE-BEDROOM A

495 SQUARE FEET



*Floor plans may vary slightly and are not to scale.*



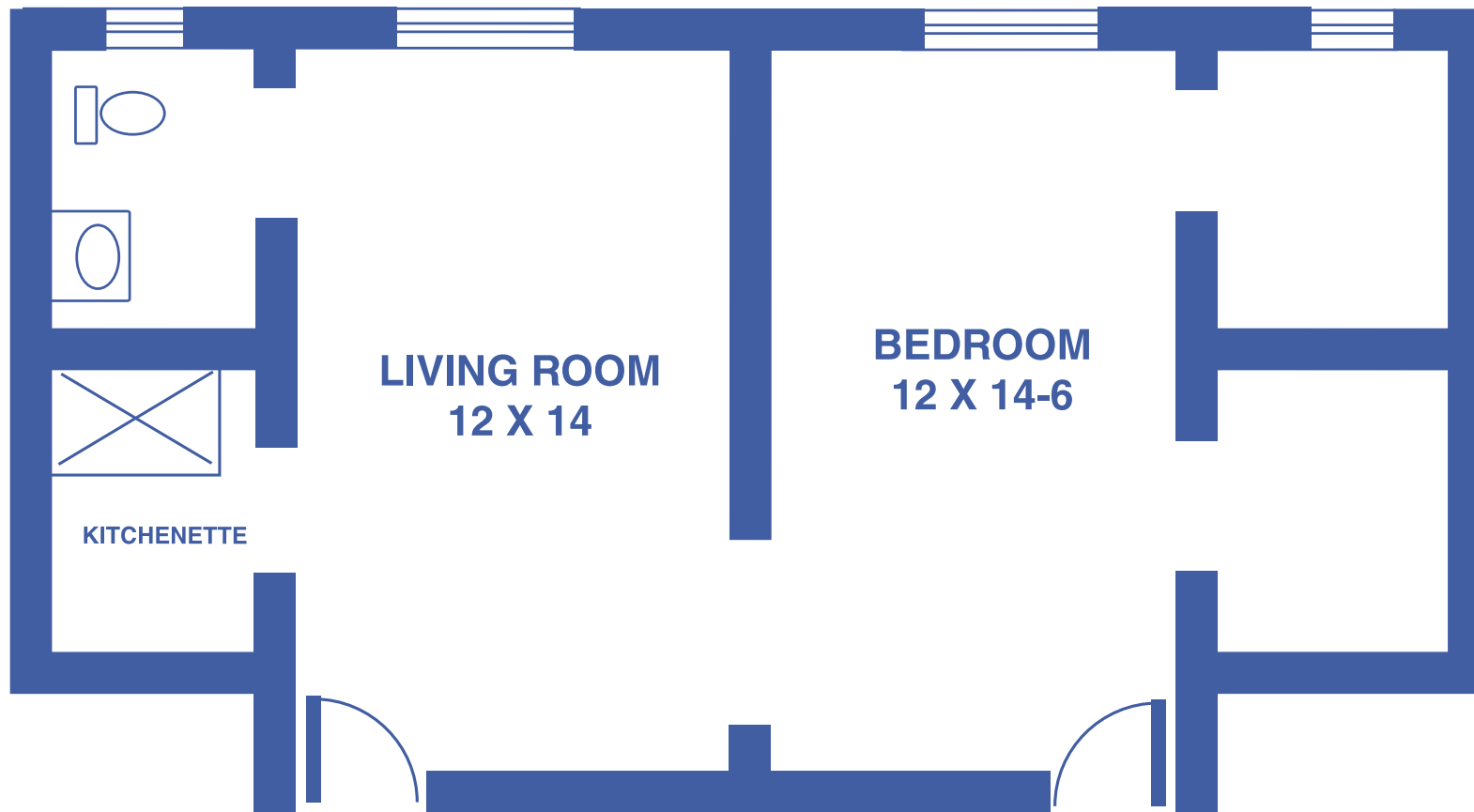
4712 SW 6TH AVE, TOPEKA, KS 66606 • [WWW.TOPEKAPRESBYTERIANMANOR.ORG](http://WWW.TOPEKAPRESBYTERIANMANOR.ORG)



**TOPEKA**  
Presbyterian Manor®

# LARGE ONE-BEDROOM B

520 SQUARE FEET



Floor plans may vary slightly and are not to scale.



4712 SW 6TH AVE, TOPEKA, KS 66606 • [WWW.TOPEKAPRESBYTERIANMANOR.ORG](http://WWW.TOPEKAPRESBYTERIANMANOR.ORG)



**TOPEKA**  
Presbyterian Manor®