



Enjoy

Sample 226-030121-005

Blue Razz Gummy

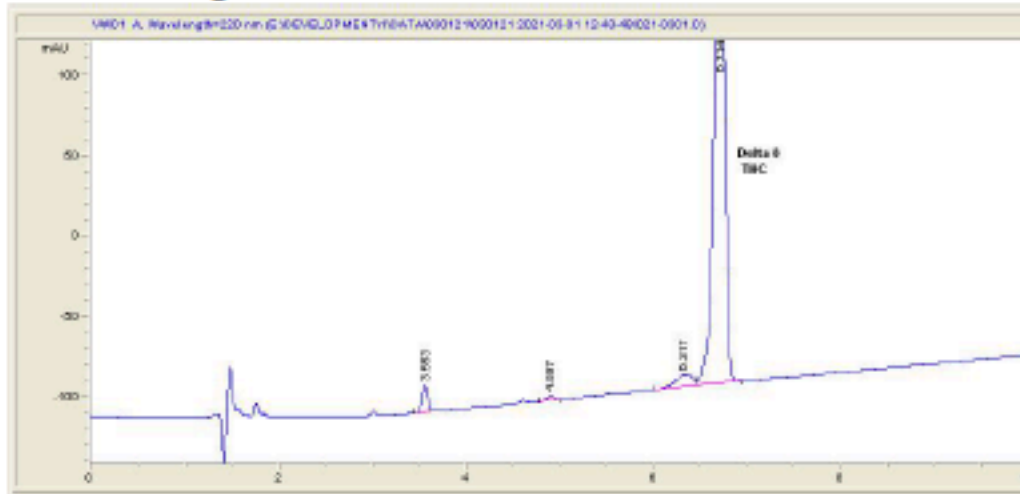
Sample Submitted: 03-01-2021; Report Date: 03-01-2021

Null Sample Unit Size: 3.02 g

# Blue Razz Gummy

Edible: Candy

## Chromatogram



## Cannabinoid Profile



## Cannabinoid Profile by HPLC

**0.00%**  
 Calculated THC Yield

**0.00%**  
 Calculated CBD Yield

**1.68%**  
 Total Cannabinoids

Cannabinoid	% wt	mg/unit
Delta-8-THC	1.68	50.77
THC	0.0	0.0
<b>Total Cannabinoids</b>	<b>1.68</b>	<b>50.8</b>
Calculated THC Yield	0.00	0.00
Calculated CBD Yield	0.00	0.00
Calculated Maximum THC Yield = THC + 0.877 * THCA		
Calculated Maximum CBD Yield = CBD + 0.877 * CBDA		

**Marin Analytics, LLC**  
 250 Bel Marin Keys Blvd, Suite D4  
 Novato, CA 94949  
 415-936-6477 / Support@MarinAnalytics.com

**Sara Biancalana**  
 Chief Scientist

This sample has been tested by Marin Analytics, LLC using valid testing methodologies and a quality system. Values reported relate only to the sample tested. Marin Analytics, LLC makes no claims as to the efficacy, safety or other risks associated with any detected or non-detected levels of any compounds reported herein. This Certificate shall not be reproduced except in full, without the written approval of Marin Analytics, LLC.

Enjoy

Sample 226-030121-006

Pineapple Gummy

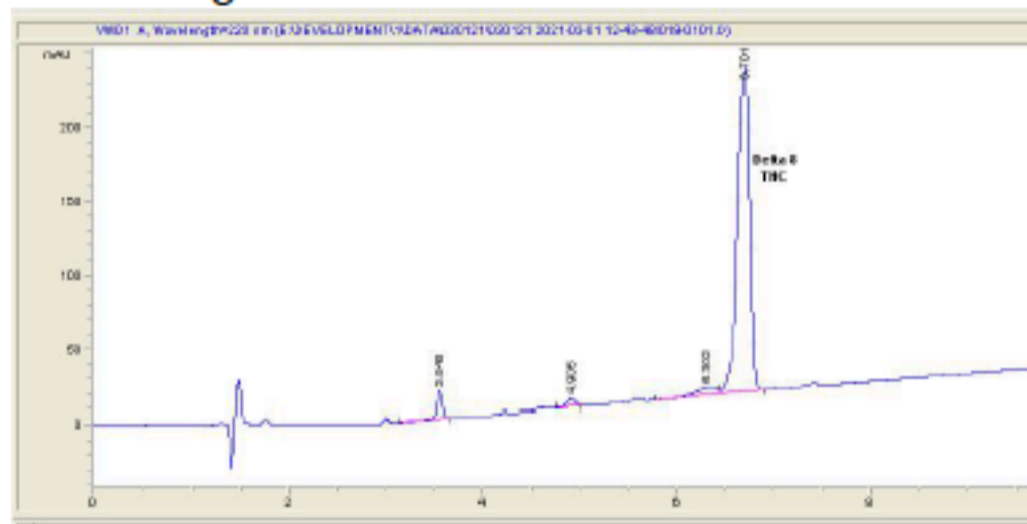
Sample Submitted: 03-01-2021; Report Date: 03-01-2021

Null Sample Unit Size: 3.18 g

## Pineapple Gummy

Edible: Candy

### Chromatogram



### Cannabinoid Profile



### Cannabinoid Profile by HPLC

**0.00%**  
Calculated THC Yield

**0.00%**  
Calculated CBD Yield

**1.66%**  
Total Cannabinoids

Cannabinoid	% wt	mg/unit
Delta-8-THC	1.66	52.72
THC	0.0	0.0
<b>Total Cannabinoids</b>	<b>1.66</b>	<b>52.7</b>
Calculated THC Yield	0.00	0.00
Calculated CBD Yield	0.00	0.00
Calculated Maximum THC Yield = THC + 0.877 * THCA		
Calculated Maximum CBD Yield = CBD + 0.877 * CBDA		

**Marin Analytics, LLC**  
250 Bel Marin Keys Blvd, Suite D4  
Novato, CA 94949

415-936-6477 / Support@MarinAnalytics.com

*Sara Biancalana*  
**Sara Biancalana**  
Chief Scientist

This sample has been tested by Marin Analytics, LLC using valid testing methodologies and a quality system. Values reported relate only to the sample tested. Marin Analytics, LLC makes no claims as to the efficacy, safety or other risks associated with any detected or non-detected levels of any compounds reported herein. This Certificate shall not be reproduced except in full, without the written approval of Marin Analytics, LLC.



12423 NE Whitaker Way  
 Portland, OR 97230  
 503-254-1794



**Report Number:** 21-001606/D03.R02  
**Report Date:** 02/26/2021  
**ORELAP#:** OR100028  
**Purchase Order:**  
**Received:** 02/16/21 12:39

**Customer:** Enjoy

**Product identity:** Blue Razz/Pineapple 50  
**Client/Metric ID:** .  
**Sample Date:** 02/10/21 09:30  
**Laboratory ID:** 21-001606-0001  
**Relinquished by:** FEDEX  
**Temp:** 13.6 °C  
**Serving Size #1:** 3.3 g

### Sample Results

Solvents		Method Residual Solvents by GC/MS				Units $\mu\text{g/g}$	Batch 2101379	Analyze 02/17/21 09:11 AM			
Analyte	Result	Limits	LOQ	Status	Notes	Analyte	Result	Limits	LOQ	Status	Notes
1,4-Dioxane	< LOQ	380	100	pass		2-Butanol	< LOQ	5000	200	pass	
2-Ethoxyethanol	< LOQ	160	30.0	pass		2-Methylbutane	< LOQ		200		
2-Methylpentane	< LOQ		30.0			2-Propanol (IPA)	< LOQ	5000	200	pass	
2,2-Dimethylbutane	< LOQ		30.0			2,2-Dimethylpropane	< LOQ		200		
2,3-Dimethylbutane	< LOQ		30.0			3-Methylpentane	< LOQ		30.0		
Acetone	< LOQ	5000	200	pass		Acetonitrile	< LOQ	410	100	pass	
Benzene	< LOQ	2.00	1.00	pass		Butanes (sum)	< LOQ	5000	400	pass	
Cyclohexane	< LOQ	3880	200	pass		Ethyl acetate	< LOQ	5000	200	pass	
Ethyl benzene	< LOQ		200			Ethyl ether	< LOQ	5000	200	pass	
Ethylene glycol	< LOQ	620	200	pass		Ethylene oxide	< LOQ	50.0	30.0	pass	
Hexanes (sum)	< LOQ	290	150	pass		Isopropyl acetate	< LOQ	5000	200	pass	
Isopropylbenzene	< LOQ	70.0	30.0	pass		m,p-Xylene	< LOQ		200		
Methanol	< LOQ	3000	200	pass		Methylene chloride	< LOQ	600	200	pass	
Methylpropane	< LOQ		200			n-Butane	< LOQ		200		
n-Heptane	< LOQ	5000	200	pass		n-Hexane	< LOQ		30.0		
n-Pentane	< LOQ		200			o-Xylene	< LOQ		200		
Pentanes (sum)	< LOQ	5000	600	pass		Propane	< LOQ	5000	200	pass	
Tetrahydrofuran	< LOQ	720	100	pass		Toluene	< LOQ	890	100	pass	
Total Xylenes	< LOQ		400			Total Xylenes and Ethyl	< LOQ	2170	600	pass	





Pesticides											
Method AOAC 2007.01 & EN 15662 (mod) Units mg/kg Batch 2101469 Analyze 02/18/21 04:56 PM											
Analyte	Result	Limits	LOQ	Status	Notes	Analyte	Result	Limits	LOQ	Status	Notes
Abamectin	< LOQ	0.50	0.250	pass		Acephate	< LOQ	0.40	0.250	pass	
Acequinocyl	< LOQ	2.0	1.00	pass		Acetamiprid	< LOQ	0.20	0.100	pass	
Aldicarb	< LOQ	0.40	0.200	pass		Azoxystrobin	< LOQ	0.20	0.100	pass	
Bifenazate	< LOQ	0.20	0.100	pass		Bifenthrin	< LOQ	0.20	0.100	pass	
Boscalid	< LOQ	0.40	0.200	pass		Carbaryl	< LOQ	0.20	0.100	pass	
Carbofuran	< LOQ	0.20	0.100	pass		Chlorantraniliprole	< LOQ	0.20	0.100	pass	
Chlorfenapyr	< LOQ	1.0	0.500	pass		Chlorpyrifos	< LOQ	0.20	0.100	pass	
Clofentezine	< LOQ	0.20	0.100	pass		Cyfluthrin	< LOQ	1.0	0.500	pass	
Cypermethrin	< LOQ	1.0	0.500	pass		Daminozide	< LOQ	1.0	0.500	pass	
Diazinon	< LOQ	0.20	0.100	pass		Dichlorvos	< LOQ	1.0	0.500	pass	
Dimethoate	< LOQ	0.20	0.100	pass		Ethoprophos	< LOQ	0.20	0.100	pass	
Etofenprox	< LOQ	0.40	0.200	pass		Etoxazole	< LOQ	0.20	0.100	pass	
Fenoxycarb	< LOQ	0.20	0.100	pass		Fenpyroximate	< LOQ	0.40	0.200	pass	
Fipronil	< LOQ	0.40	0.200	pass		Fonicamid	< LOQ	1.0	0.400	pass	
Fludioxonil	< LOQ	0.40	0.200	pass		Hexythiazox	< LOQ	1.0	0.400	pass	
Imazalil	< LOQ	0.20	0.100	pass		Imidacloprid	< LOQ	0.40	0.200	pass	
Kresoxim-methyl	< LOQ	0.40	0.200	pass		Malathion	< LOQ	0.20	0.100	pass	
Metalaxyl	< LOQ	0.20	0.100	pass		Methiocarb	< LOQ	0.20	0.100	pass	
Methomyl	< LOQ	0.40	0.200	pass		MGK-264	< LOQ	0.20	0.100	pass	
Myclobutanil	< LOQ	0.20	0.100	pass		Naled	< LOQ	0.50	0.250	pass	
Oxamyl	< LOQ	1.0	0.500	pass		Paclobutrazole	< LOQ	0.40	0.200	pass	
Parathion-Methyl	< LOQ	0.20	0.200	pass		Permethrin	< LOQ	0.20	0.100	pass	
Phosmet	< LOQ	0.20	0.100	pass		Piperonyl butoxide	< LOQ	2.0	1.00	pass	
Prallethrin	< LOQ	0.20	0.200	pass		Propiconazole	< LOQ	0.40	0.200	pass	
Propoxur	< LOQ	0.20	0.100	pass		Pyrethrin I (total)	< LOQ	1.0	0.500	pass	
Pyridaben	< LOQ	0.20	0.100	pass		Spinosad	< LOQ	0.20	0.100	pass	
Spiromesifen	< LOQ	0.20	0.100	pass		Spirotetramat	< LOQ	0.20	0.100	pass	
Spiroxamine	< LOQ	0.40	0.200	pass		Tebuconazole	< LOQ	0.40	0.200	pass	
Thiacloprid	< LOQ	0.20	0.100	pass		Thiamethoxam	< LOQ	0.20	0.100	pass	
Trifloxystrobin	< LOQ	0.20	0.100	pass							

Metals									
Analyte	Result	Limits	Units	LOQ	Batch	Analyze	Method	Notes	
Arsenic	< LOQ	0.20	mg/kg	0.00897	2101431	02/17/21	AOAC 2013.06 (mod.)	X	
Cadmium	< LOQ	0.20	mg/kg	0.00897	2101431	02/17/21	AOAC 2013.06 (mod.)	X	
Lead	< LOQ	0.50	mg/kg	0.00871	2101536	02/19/21	AOAC 2013.06 (mod.)	X	
Mercury	< LOQ	0.10	mg/kg	0.00449	2101431	02/17/21	AOAC 2013.06 (mod.)	X	



12423 NE Whitaker Way  
 Portland, OR 97230  
 503-254-1794



**Report Number:** 21-002346/D02.R01  
**Report Date:** 03/12/2021  
**ORELAP#:** OR100028  
**Purchase Order:**  
**Received:** 03/05/21 10:44

**Customer:** Enjoy  
**Product identity:** Strawberry 50  
**Client/Metro ID:** .  
**Laboratory ID:** 21-002346-0001

**Sample Date:** 03/03/21 09:30

**Summary**

**Potency:**

Analyte per 3.3g	Result	Limits	Units	Status	
Δ8-THC per 3.3g†	50.2		mg/3.3g		CBD-Total per 3.3g <LOQ
					THC-Total per 3.3g <LOQ
(Reported in milligrams per serving)					

**Residual Solvents:**

*All analytes passing and less than LOQ.*

**Pesticides:**

*All analytes passing and less than LOQ.*

**Metals:**

*Less than LOQ for all analytes.*