

# SPTek ECLIPSE™

BIO-ASSIMILATION ADDITIVE

## Causes plastic to bio-assimilate naturally (total biodegradation)

- Traditional plastic does not rapidly degrade, contributing to litter and landfill
- ECLIPSE additive profoundly transforms polyolefins into a renewable material—a food source for a multitude of micro-organisms—**GUARANTEED**
- Uniquely formulated to provide programmed useful-life performance prior to rapid 100% natural bio-assimilation
- Contains no heavy metals
- No micro-plastic filament residue remains
- Simple 1% inclusion in finished film production process
- Extensive independent testing—proven reliability
- Designed for use in polyolefins like PE & PP
- FDA approved
- ASTM 5526 Certified
- ASTM 6954 Certified
- Made from bio-sourced materials—standard & customized masterbatch formulations
- 100% recyclable

## SMALL CHANGES THAT MAKE BIG DIFFERENCES™

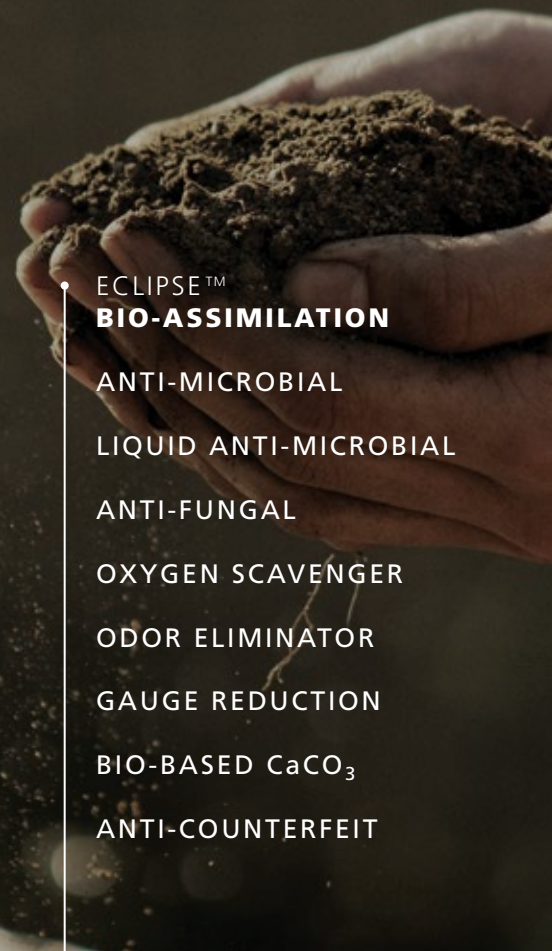
SmartPlastic additives are inserted into the production process in very small percentages along with other standard ingredients.

The resulting "Smart Plastic" is changing industries, positively impacting the environment and making a difference in people's lives.

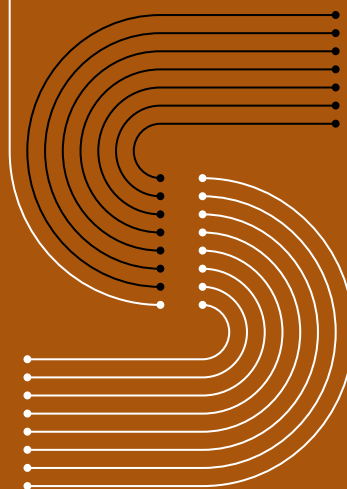
VISIT US ONLINE  
[WWW.SPTWEB.COM](http://WWW.SPTWEB.COM)

PHONE  
[+1.865.392.5509](tel:+1.865.392.5509)

EMAIL  
[SALES@SPTWEB.COM](mailto:SALES@SPTWEB.COM)



ECLIPSE™  
**BIO-ASSIMILATION**  
ANTI-MICROBIAL  
LIQUID ANTI-MICROBIAL  
ANTI-FUNGAL  
OXYGEN SCAVENGER  
ODOR ELIMINATOR  
GAUGE REDUCTION  
BIO-BASED CaCO<sub>3</sub>  
ANTI-COUNTERFEIT



# SPTek ECLIPSE™ BIO-ASSIMILATION ADDITIVE

## Applications

- All polyolefins, i.e. polyethylene and polypropylene
- Extruded films: printing films, laminating films, sealant layers
- All short service life items: trash bags, shopper bags, fast food packaging, etc.
- Recyclable flexible packaging pouches, bags and zippers/closures such as PE and PP co-ex barrier and non-barrier
- Agri-film applications: mulch, crop protection materials
- Food service items: straws, lids, stir sticks, cutlery, cups, plates, etc.
- Protective packaging: stretch wrap, shrink films, bubble wrap
- Circular economy models

## Benefits

- No interference to production processing
- No impact on extrusion efficiency
- Zero capital investment required
- 100% Recyclable
- Works with recycled polyolefins
- Low inclusion rate (1%)
- Functionality period can be customized
- Will bio-assimilate in terrestrial and marine environments
- Will bio-assimilate in anaerobic landfill



## Rethinking the challenges and potential of plastic

Transforming plastics into responsible formats that reduce litter, decrease illness, combat crime, and help leading manufacturers better serve consumers and improve sustainability.

We are proud to be an American company.  
[WWW.SPTWEB.COM](http://WWW.SPTWEB.COM)

## Preferred Partners™

**MARUBENI SPECIALTY  
CHEMICALS INC.**

+1.914.428.5528  
SANTANA-G@MARUBENI-USA.COM  
[WWW.MARUBENISCI.COM](http://WWW.MARUBENISCI.COM)

**AARGUS  
PLASTICS, INC.**

+1.847.325.4444  
SALES@AARGUSPLASTICS.COM  
[WWW.AARGUSPLASTICS.COM](http://WWW.AARGUSPLASTICS.COM)

**L.M.P.E. Srl**  
ECOCOMPATIBLE POLYMERS  
MATERIALS LABORATORY

+39.335.36.8330  
FRANCESCO.SANDIAS@LMPE.EU  
[WWW.LMPE.EU](http://WWW.LMPE.EU)