

BRAIN INJURY ASSOCIATION OF LOUISIANA



**United Spinal
Association**
Louisiana Chapter

OUR MISSION

Our mission is to be the statewide resource for those impacted by brain and/or spinal cord injury.
Advocacy • Awareness • Education • Prevention • Services

50

150

200+

BIALA serves 28–50 people monthly via our Hotline, 150 individuals in support groups and 200+ at our annual conference.



ANNUAL CONFERENCE

Local & National Presenters
Over 30 Exhibitors
CEU's Available

OUR PROGRAMS

Peer Mentor Program
Sports/Recreation Partnership
Unmasking Brain Injury Initiative
(sponsored by TASS Brain Injury Rehabilitation Center)

Ms. Wheelchair Louisiana
Connections Circle
(Connections Immersed in Real
Community Life Experiences)
Ready, Relax, Eat
Friends of BIALA



We are the only BIAA/United Spinal chapter that maintains a 24-hour hotline

BIALA ASSOCIATIONS

- Brain Injury Association of America
- United Spinal Association
- Unmasking Brain Injury
- Ms. Wheelchair America



THSCI TRUST FUND

We are the Traumatic Head and Spinal Cord Injury Trust Fund (THSCI Trust Fund) Resource Center for Louisiana. Fact sheet and trust fund application available on our website.

SUPPORT GROUPS

- BIALA provides support and resources for 10 groups in Louisiana
- Types of groups include SCI, TBI, Neuro

THE VOICE OF
**HELP, HOPE
& HEALING**



BIALA WEBSITE **www.biala.org**

Our website is the best place to get complete information about our programs and events. At biala.org you will find useful resources plus:

- Resource Center
- Events
- Educational Materials
- Last Day Lagniappe monthly newsletter

GOVERNANCE

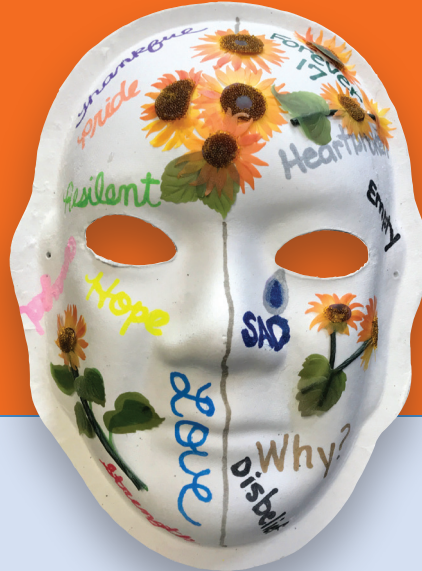
We are governed by a Board of Directors representing a cross-section of voices, talents, and skills. The board is made up of survivors, caregivers, and professionals.



FRIENDS OF BIALA

Friends of BIALA is our new giving circle. We have 21 charter members. Your giving goes directly to support the mission and vision of BIALA.

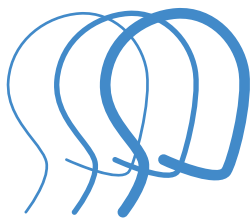
This mask is a representation from the Unmasking Brain Injury exhibit where survivors express their emotions through artistic interpretations.



WE WELCOME YOUR SUPPORT

Please consider a donation online at www.biala.org, or by mail at our address below. Checks may be made out to the Brain Injury Association of Louisiana.

THANK YOU FOR BEING A VOICE OF HELP, HOPE & HEALING



**BRAIN INJURY
ASSOCIATION**
OF LOUISIANA



**United Spinal
Association**
Louisiana Chapter

8325 Oak Street • New Orleans, Louisiana • 70118 • 504.982.0685 • info@biala.org
www.biala.org

Facebook: Brain Injury Association of Louisiana/United Spinal Louisiana Chapter

Instagram: [biala.lachapterusa](https://www.instagram.com/biala.lachapterusa) Twitter: [@BIALAbrainspine](https://twitter.com/BIALAbrainspine)