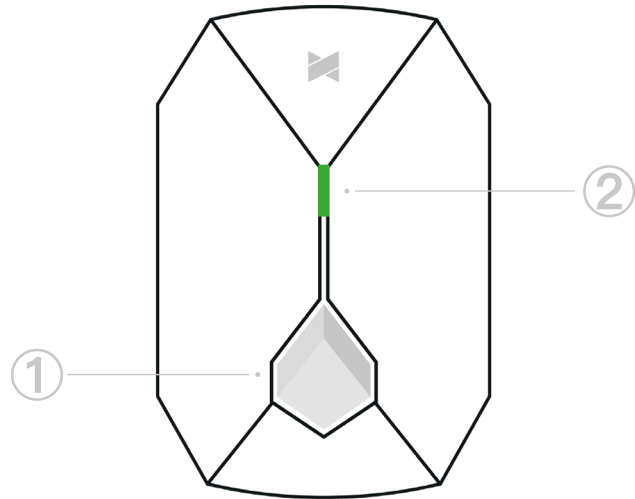
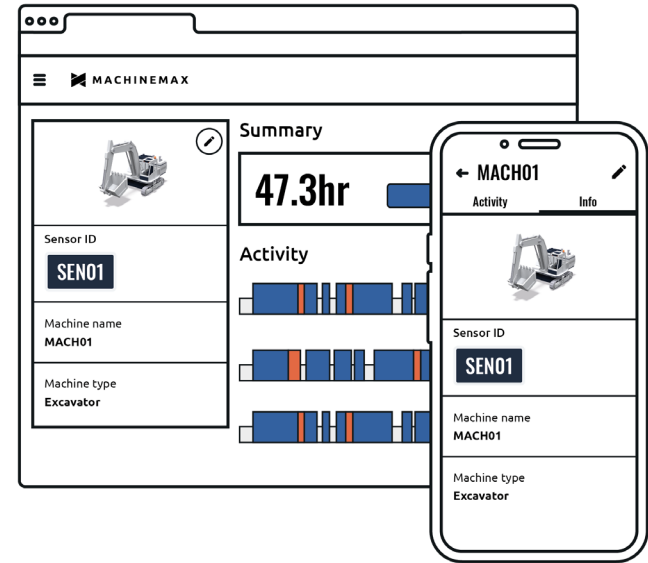


# Move sensor




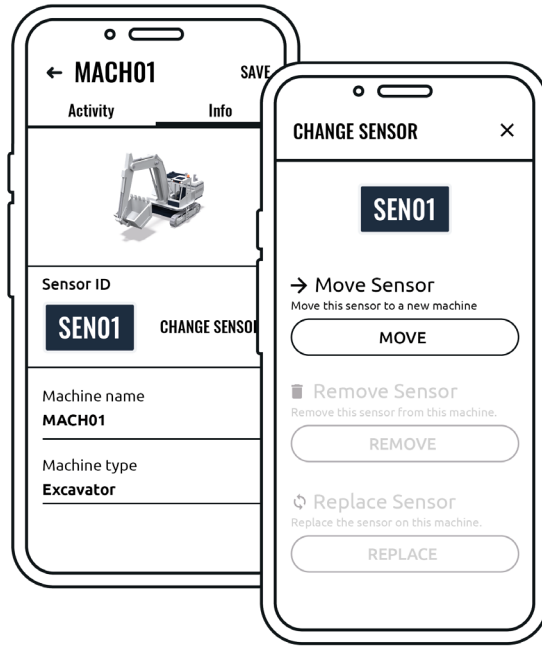
## 1. Powering on

Press and hold the power button ① for 10 seconds until the **LED indicator** ② flashes green and you hear 4 beeps. To check if your sensor is already powered on, press the power button ① once, if the light flashes green, it is already on.



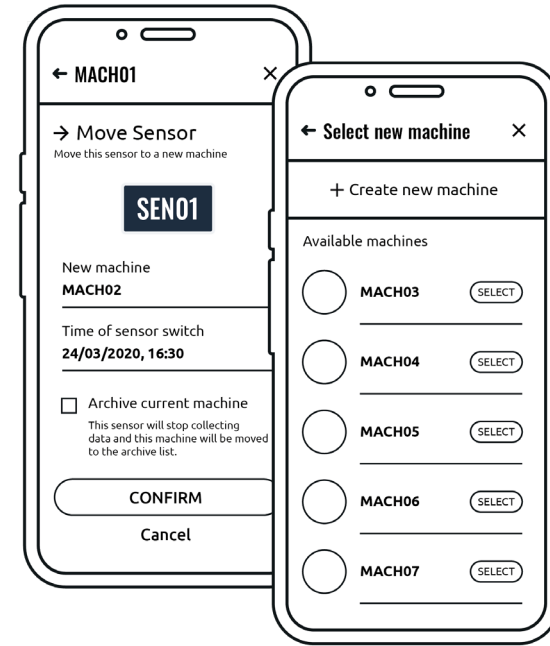
## 2. Edit machine

Go to [www.machinemax.com/login](http://www.machinemax.com/login) and select the machine you are changing the sensor on. Click the edit button  to bring up the machine edit function. **NOTE:** You must have admin access to use this function



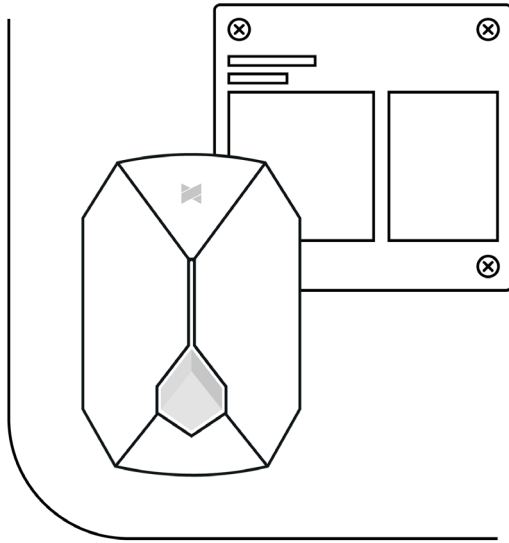
### 3. Move Sensor

- Tap or click the button labeled “Change Sensor”
- Tap or click the button labeled “Move Sensor”



### 4. Add information

- Select the new machine for this sensor, if the machine doesn't exist you can create it here
- Confirm the time of sensor switch is correct
- If you wish to archive the machine the sensor is leaving you can do this here
- Click **CONFIRM**



## 5. Remove sensor from old machine & attach to new

Remove the sensor from the old machine and move the sensor to any metal part of the new machinery next to the engine of the machine using the built-in magnet. The sensor is now ready for use.

*(attachment point and unit rubber feet shall be cleaned with isopropyl alcohol before the sensor is magnetically attached to the surface)*

## Support

Should you need any help or more information on the installation of your sensors please contact us at:

**[help@machinemax.com](mailto:help@machinemax.com)**

Let us know your order number, organisation name, issue, and a contact number and we will reply asap with support.