

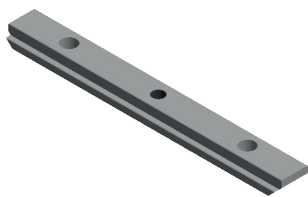
# DATASHEET ACCESSORIES

## BW MOUNTING ACCESSORIES

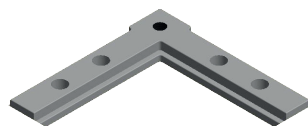
**Material**

Aluminum, black anodization

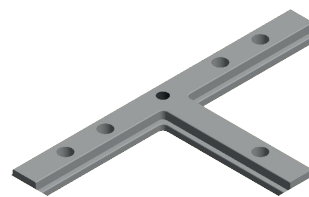
**Products List**



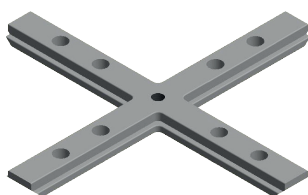
**PN:** LU-BW-M1  
**Name:** Straight coupler  
(I coupler)



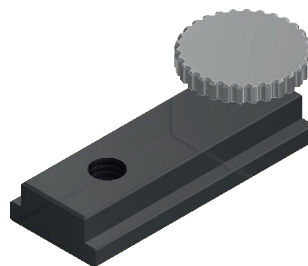
**PN:** LU-BW-M2  
**Name:** Corner 90  
(L coupler)



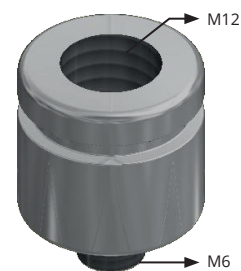
**PN:** LU-BW-M4  
**Name:** T shape  
(T coupler)



**PN:** LU-BW-M3  
**Name:** Cross  
(X coupler)



**PN:** LU-BW-M0  
**Name:** Mounting block  
incl knob bolt



**PN:** LU-BW-M12M6  
**Name:** Adapter M12 -  
M6

## CABLES

<b>Material</b>	PVC outer sheat
	Pixlbus cable: power + data (2x 1mm <sup>2</sup> + twisted pair)
<b>Connectors</b>	Plastic M12 male connector - IP66 Plastic M12 female - IP66

<b>Product List</b>	<b>PN</b>	<b>Name</b>
	LU-BW-CA0.5	Extension cable 0,5m
	LU-BW-CA01	Extension cable 0,5m
	LU-BW-CA02.5	Extension cable 0,5m
	LU-BW-CA05	Extension cable 0,5m
	LU-BW-CA10	Extension cable 0,5m
	LU-BW-CAEC	Plastic end cap to seal the last connector in a daisy chain

## COVERS

<b>Material</b>	PMMA	
<b>Product List</b>	<b>PN</b>	<b>Name</b>
	BW-FC100	Flat cover clear
	BW-FC50	Flat cover clear
	BW-FF100	Flat cover frosted
	BW-FF50	Flat cover frosted
	BW-FB100	Flat cover stealth black
	BW-FB50	Flat cover stealth black
	BW-RF100	Round cover frosted
	BW-RF50	Round cover frosted
	BW-SF100	Square cover frosted
	BW-SF50	Square cover frosted