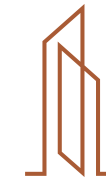




PERIGON HEIGHTS
BROMLEY

THE EXECUTIVE COLLECTION



PERIGON HEIGHTS
BROMLEY

**BROMLEY'S MOST EXCITING BUILD TO RENT
DEVELOPMENT**

LOCATION



	BROMLEY SOUTH	2 MINUTES WALK
	PECKHAM RYE	14 MINUTES
	LONDON VICTORIA	16 MINUTES
	ELEPHANT & CASTLE	19 MINUTES
	BLACKFRIARS	23 MINUTES

LOCAL AREA & TRANSPORT



ALL TRAIN TIMES CORRECT AT TIME OF PRINT (SOURCE TFL) & DO NOT INCLUDE THE WALK TO BROMLEY SOUTH STATION

EAT, DRINK, SHOP

EATING AND DRINKING OPTIONS ARE PLENTIFUL, WITH A NUMBER OF HIGHLY REGARDED RESTAURANTS, CAFÉS, PUBS AND BARS TO CHOOSE FROM.



WITH OVER 300 SHOPS, RESTAURANTS & BARS THROUGHOUT BROMLEY TOWN CENTRE, THERE IS SOMETHING FOR EVERYONE

The Purelake Group have built an enviable reputation of high quality and innovation in the projects they undertake.

Based in Bromley, Purelake operates mainly in the South East London and North West Kent catchment area and primarily focuses on building residential developments.

Increasingly they are becoming involved in larger, mixed-use schemes with elements of student

accommodation and commercial part of the build portfolio.

Regional Finalists in the LABC Excellence Awards 2019 and shortlisted as finalists in 2020, the award winning Purelake Group are a leading name for quality housebuilding in the South East.

Attention to detail and innovative design have enabled Purelake to develop homes that capture and enhance every aspect of modern living.

LOCAL AREA & TRANSPORT



SHOPPING

Waitrose
2 mins walk

The Glades Shopping Centre
5 mins walk

Bromley High Street
5 mins walk

Bromley Market (Thurs, Fri, Sat)
5 mins walk

Sainsbury's
12 mins walk

RESTAURANTS

St Mark's Square
5 mins walk

The Glades Restaurant Quarter
8 mins walk

Franco Manca
10 mins walk

Havet - Turkish/Meze
13 mins walk

Aqua
13 mins walk

Cow & Pig
13 mins walk

PUBS/BARS

The Bricklayers Arms
8 mins walk

The Partridge
12 mins walk

Barrel & Horn
13 mins walk

The Railway Tavern
15 mins walk

LEISURE & GREEN SPACE

Bromley Fitness Centre
7 mins walk

Church House Gardens
8 mins walk

The Pavilion - Mytime Active
10 mins walk

TruGym
13 mins walk

Shortlands Golf Club
23 mins walk

ALL APARTMENTS COME WITH MODERN KITCHENS AND BATHROOMS, AND BUILT-IN WARDROBES TO MASTER BEDROOMS.

GENERAL

Stylish, modern communal areas
Two lifts
Outside space to all apartments
Excellent transport links
Stunning views
MySmartBox mailboxes

KITCHENS

High quality, custom designed handleless kitchens with soft close drawers and doors
Coordinating stone effect worktops and full height up-stands
Integrated LED lighting
Bosch oven & ceramic hob
Bosch integrated microwave to selected units
Integrated Zanussi fridge/freezer, dishwasher
Zanussi washer/dryer in utility cupboard*



BATHROOMS

Ultra-modern chrome taps and fittings
Luxury tiling
Contemporary vanity units to main bathrooms
Back to wall WC's with chrome push flush
Chrome heated towel radiators
Large feature mirrors
Heated floors

INTERNAL

Stylish, contemporary white doors with polished chrome ironmongery
Bespoke built-in wardrobes to all master bedrooms
Luxury wood effect flooring to hallways, kitchens and lounges

ELECTRICAL

Generous use of LED downlighters throughout
Brushed chrome light switches & sockets
USB port sockets to key rooms
Video door entry

*Washer/dryer is integrated in the kitchen of some flat types



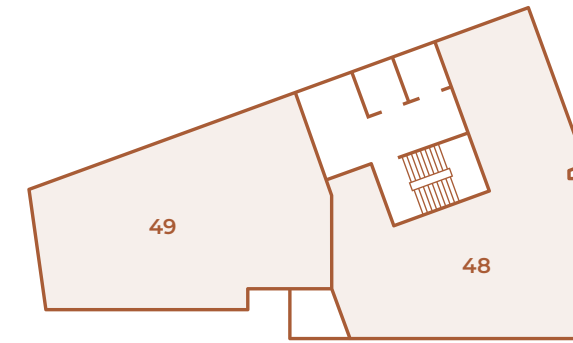
PLANS & SPECIFICATION



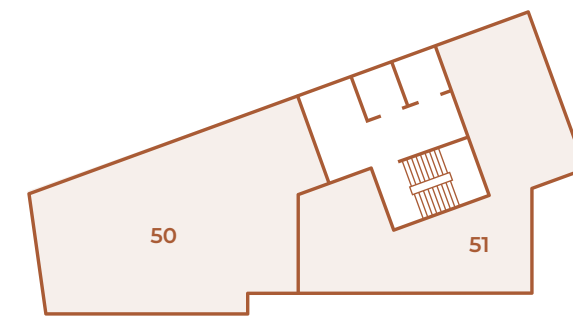
- 16TH APARTMENT 52
- 15TH APARTMENTS 50 & 51
- 14TH APARTMENTS 48 & 49



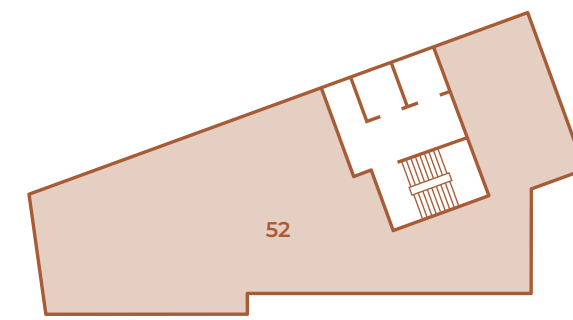
FOURTEENTH FLOOR



FIFTEENTH FLOOR



SIXTEENTH FLOOR



KEY:

 2 BED APARTMENT

 THE PENTHOUSE



THE EXECUTIVE COLLECTION

OFFERING RESIDENTS STUNNING VIEWS OVER LONDON & KENT.

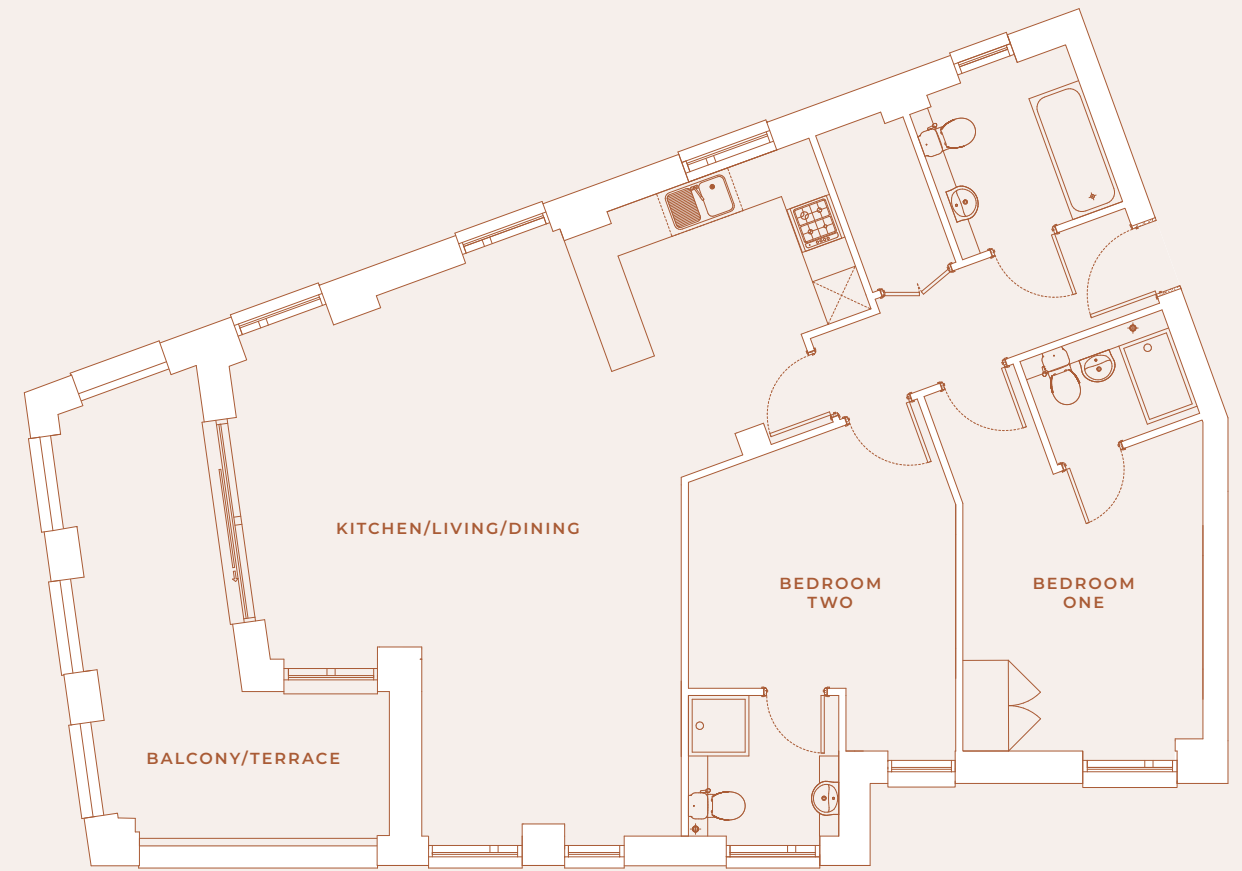
Bringing a whole new view to Bromley, Perigon Heights is a development of brand new luxury apartments to rent. One of Bromley's tallest buildings and just moments from Bromley South Station.

The top three floors are occupied by an exclusive collection of spacious apartments, with the pièce de résistance being a luxurious three bedroom penthouse suite measuring over 1,500 sqft, complete with two large terraces and stunning 360° views across London and Kent.

Finished to a high specification throughout, all apartments come with either terraces or balconies, modern kitchens and bathrooms, and benefit from built-in wardrobes to all master bedrooms.

Built by renowned local developer, The Purelake Group, whose long-term commitment to being a residential landlord gives tenants rental security and peace of mind for the duration of their tenancy, no matter how long that may be.



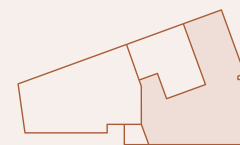


TYPE 10

878 SQFT - 81.6 SQM

APARTMENT 48

KITCHEN/LIVING/DINING	32'1 x 15'2	9.8m x 4.6m
BEDROOM ONE	11'11 x 9'7	3.6m x 2.9m
BEDROOM TWO	11'11 x 8'11	3.6m x 2.7m
BALCONY/TERRACE	430 sqft	40 sqm



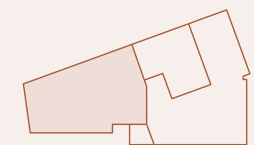
FLOOR 14

TYPE 11

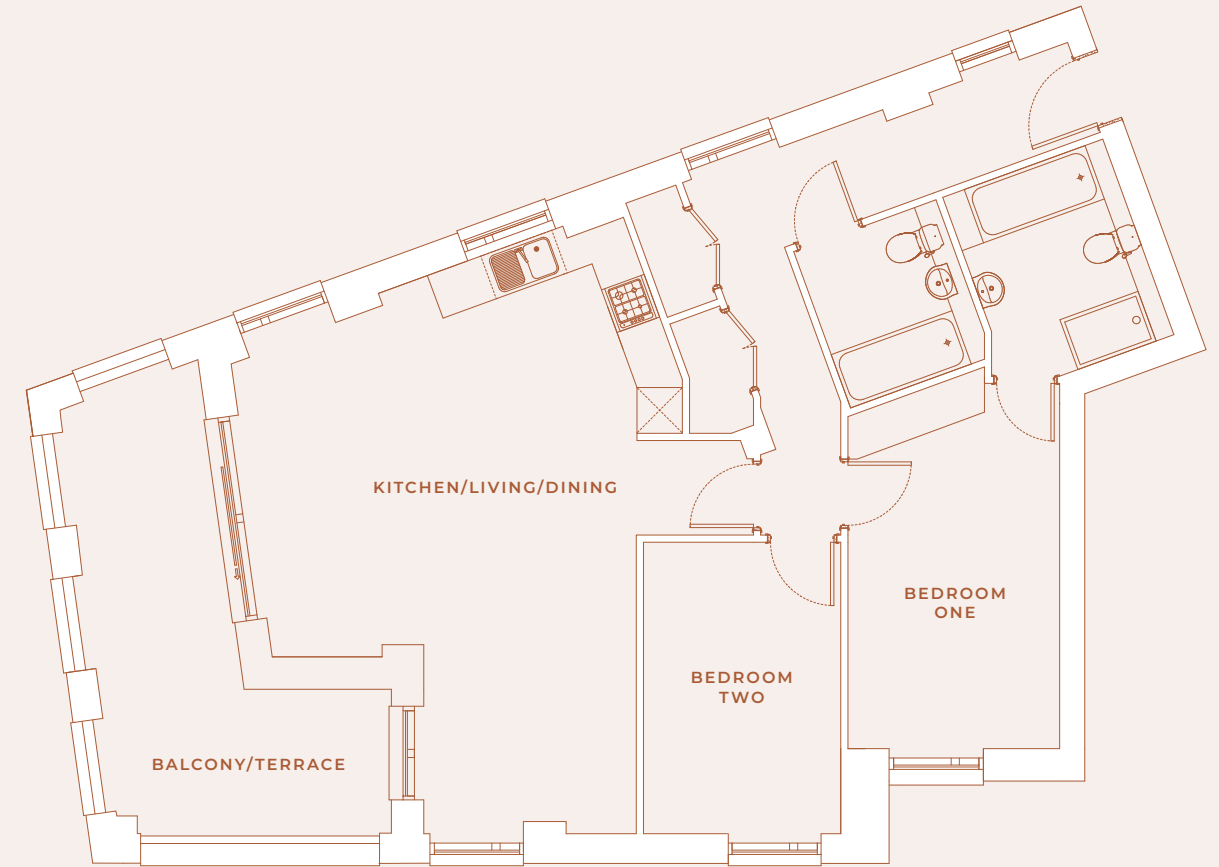
1,028 SQFT - 95.5 SQM

APARTMENT 49

KITCHEN/LIVING/DINING	25'4 x 25'9	7.7m x 7.8m
BEDROOM ONE	10'4 x 13'4	3.1m x 4.1m
BEDROOM TWO	11'6 x 11'2	3.5m x 3.4m
BALCONY/TERRACE	159 sqft	14.8 sqm



FLOOR 14

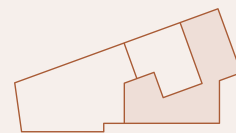


TYPE 12

889 SQFT - 82.6 SQM

APARTMENT 51

KITCHEN/LIVING/DINING	30'4 x 13'10	9.2m x 4.2m
BEDROOM ONE	11'11 x 9'7	3.6m x 2.9m
BEDROOM TWO	11'11 x 8'11	3.6m x 2.7m
BALCONY/TERRACE	78 sqft	7.2 sqm



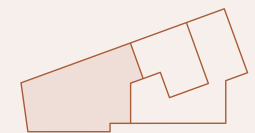
FLOOR 15

TYPE 13

921 SQFT - 85.6 SQM

APARTMENT 50

KITCHEN/LIVING/DINING	21'11 x 25'2	6.7m x 7.7m
BEDROOM ONE	9'1 x 15'9	2.8m x 4.8m
BEDROOM TWO	8'6 x 12'6	2.6m x 3.8m
BALCONY/TERRACE	159 sqft	14.8 sqm



FLOOR 15

THE COMPLETE VIEW

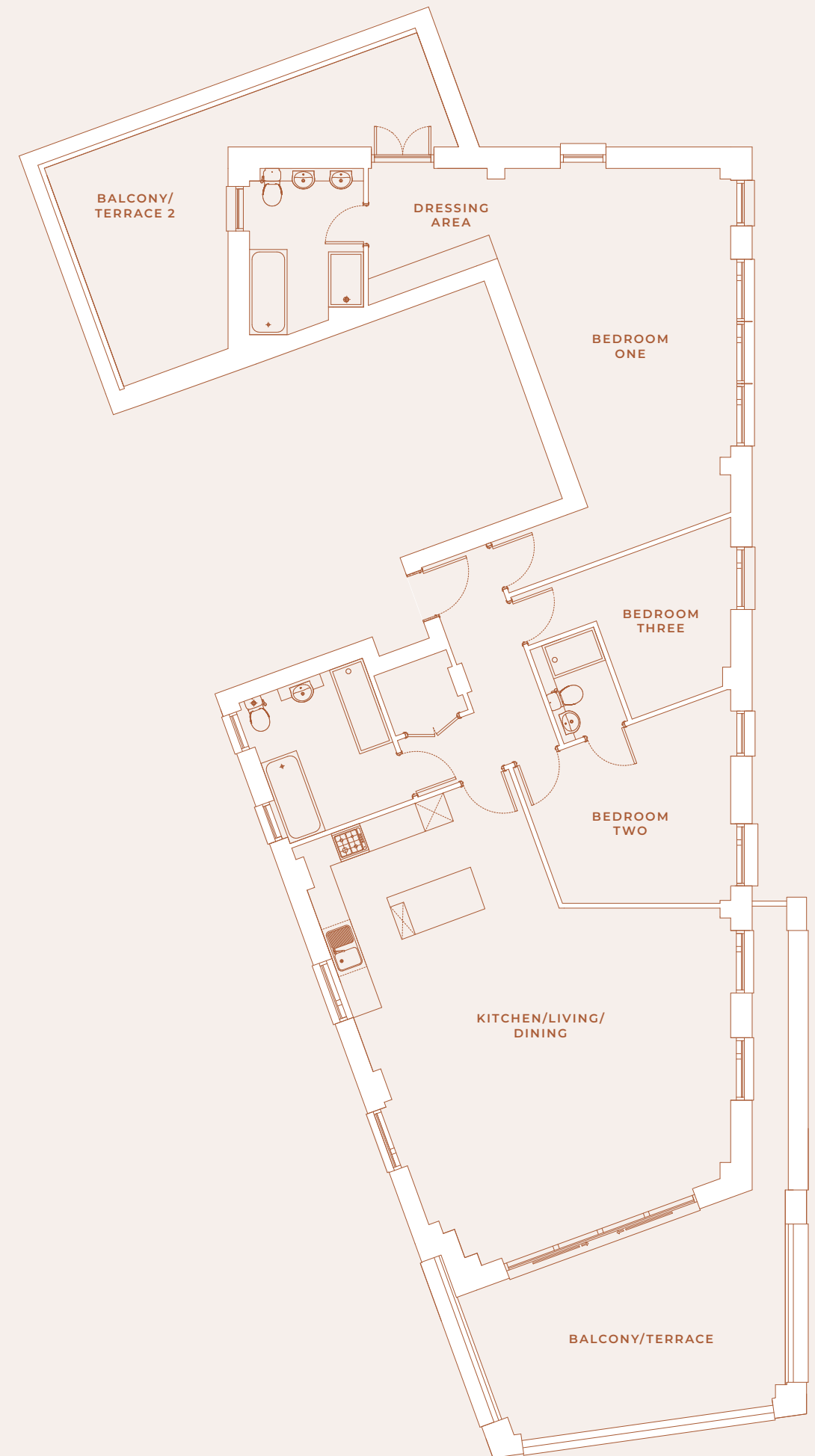


THIS STUNNING, 3 BEDROOM PENTHOUSE APARTMENT OFFERS AMAZING 360 DEGREE VIEWS OF LONDON AND KENT

TYPE 14 1,573 SQFT - 146.1 SQM

APARTMENT 52 - 16TH FLOOR PENTHOUSE

KITCHEN/DINING/LIVING	29'10 x 25'2	9.1m x 7.7m
BEDROOM ONE	24'10 x 15'1	7.6m x 4.6m
DRESSING AREA	7'7 x 15'1	2.3m x 4.6m
BEDROOM TWO	13'5 x 12'11	4.1m x 3.9m
BEDROOM THREE	9'10 x 10'1	3m x 3.1m
BALCONY/TERRACE	240 sqft	22.3 sqm
BALCONY/TERRACE 2	227 sqft	21.1 sqm



VIEW FROM THE PENTHOUSE



THE DISTINCTIVE DEVELOPER

A LANDMARK DEVELOPMENT FOR A BROMLEY BASED DEVELOPER

The Purelake Group have built an enviable reputation of high quality and innovation in the projects they undertake.

Based in Bromley, The Purelake Group operates mainly in the South East London and North West Kent catchment area and primarily focuses on building residential developments.

Increasingly they are becoming involved in larger, mixed-use schemes with elements of student accommodation and commercial space becoming part of the build portfolio.

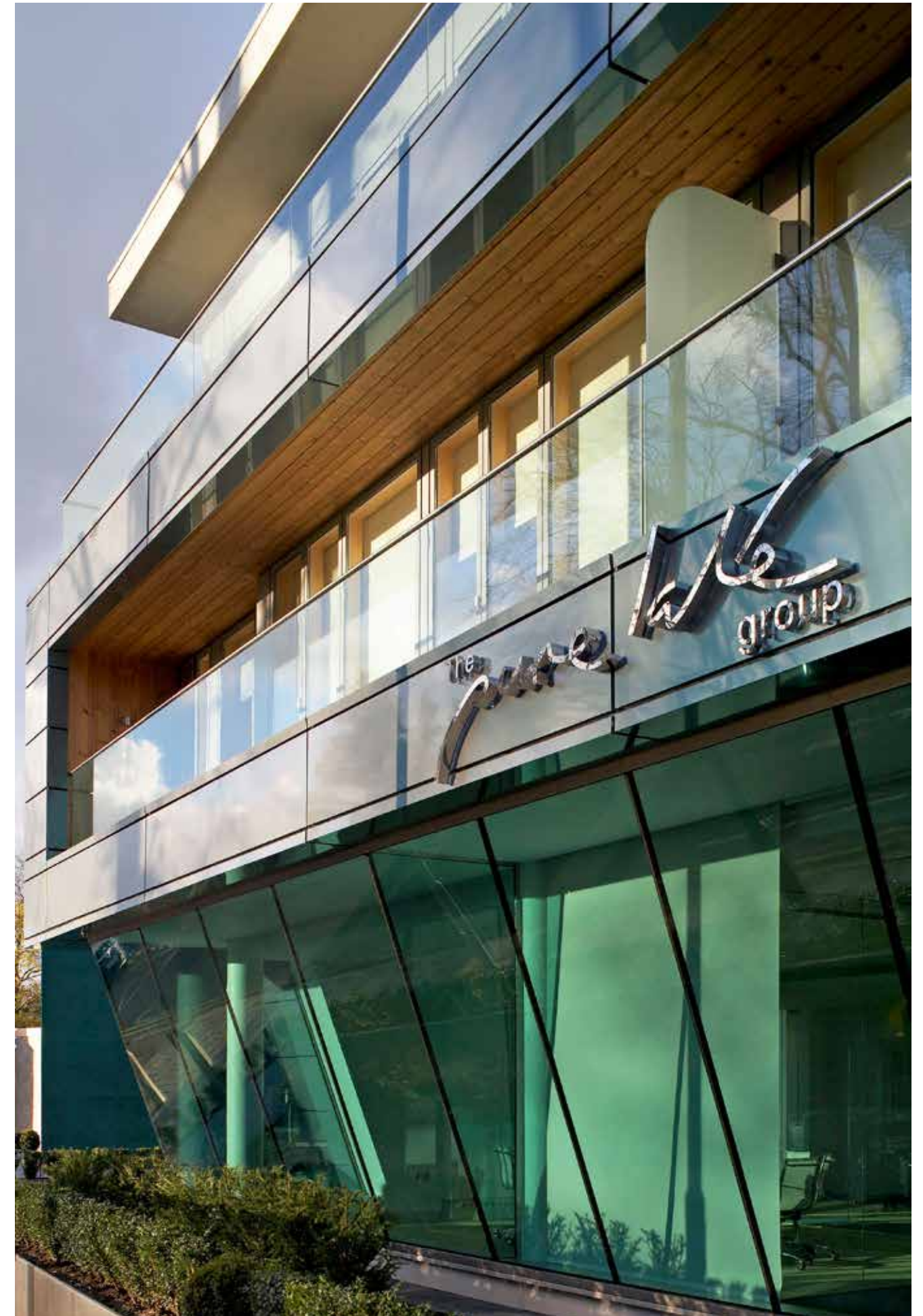
Regional Finalists in the 2019 LABC Excellence Awards and shortlisted as finalists in 2020, the award winning Purelake Group are a leading name for quality housebuilding throughout the South East.

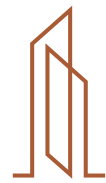
Attention to detail and innovative design have enabled Purelake to develop homes that capture and enhance every aspect of modern living.

Purelake's long-term commitment to being a residential landlord gives tenants rental security and peace of mind for the duration of their tenancy.

The
pure lake
group
The Distinctive Developer

PURELAKE.CO.UK





PERIGON HEIGHTS
BROMLEY

LETTING AGENTS

For more information please contact:

020 8315 6916

btr@acorngroup.co.uk

acorngroup.co.uk

These particulars are provided as a guide to what is being offered and are subject to contract and availability. Whilst showing the general specification and design of the property we reserve the right and liberty at our discretion to amend or vary. All measurements are approximate and taken at the maximum points and should not be relied upon. Layouts, sizes and specification are not final and may change. We advise that any prospective purchasers employ their own independent experts to verify the statements herein. Map for reference purposes only. Not to scale. All information and images provided are the property of Acorn and may not be used or replicated in part or full without prior permission from Acorn.



