



**FALCONS LANDING**  
Common Bonds. Extraordinary Living.

## Chesapeake 2 Bed & 2 Bath Apartment 1510 sq. ft.



*\*Slight variations in floor plans may exist.  
Not drawn to scale.*

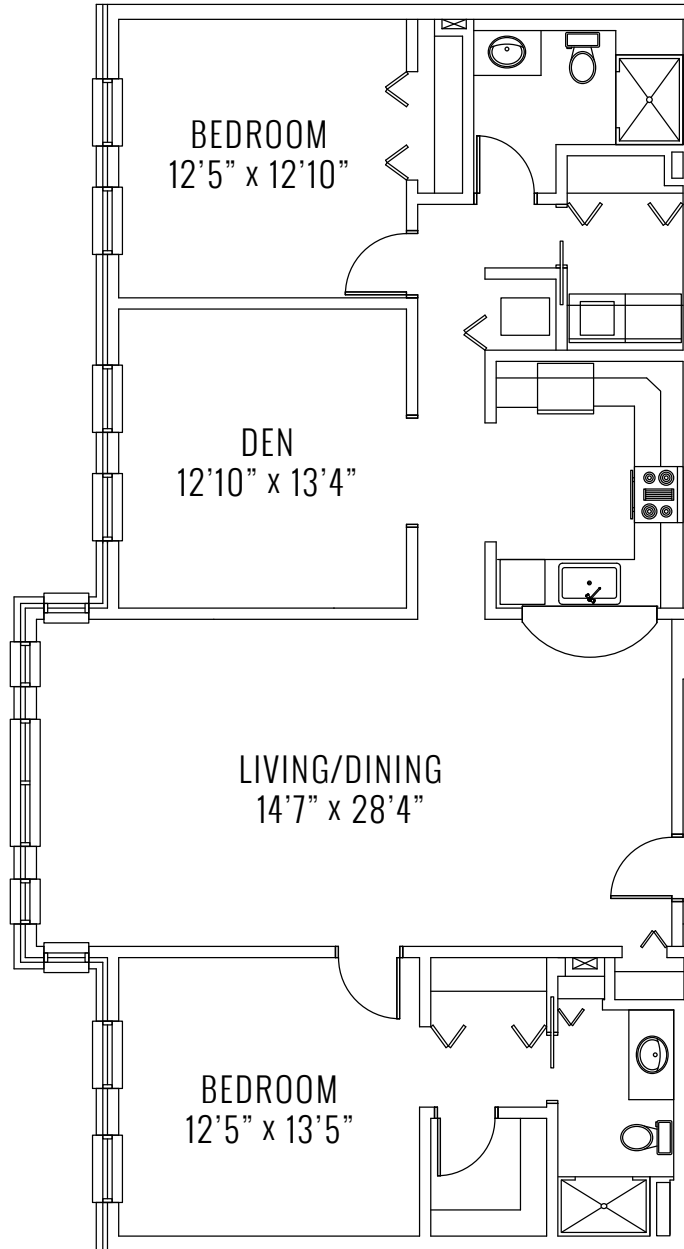
**CONTACT US!** Call (703) 404-5100 or visit [falconslanding.org](http://falconslanding.org).



**FALCONS LANDING**  
*Common Bonds. Extraordinary Living.*

## Chesapeake

2 Bed & 2 Bath Apartment  
1510 sq. ft.



*\*Slight variations in floor plans may exist.  
Not drawn to scale.*

**CONTACT US!** Call (703) 404-5100 or visit [falconslanding.org](http://falconslanding.org).