





## Property 1

A grand lateral apartment on the 1st floor of a classic mansion block. High windows from both sides allow the light to flow all the way through and offer great opportunities for architectural and interior redesign.

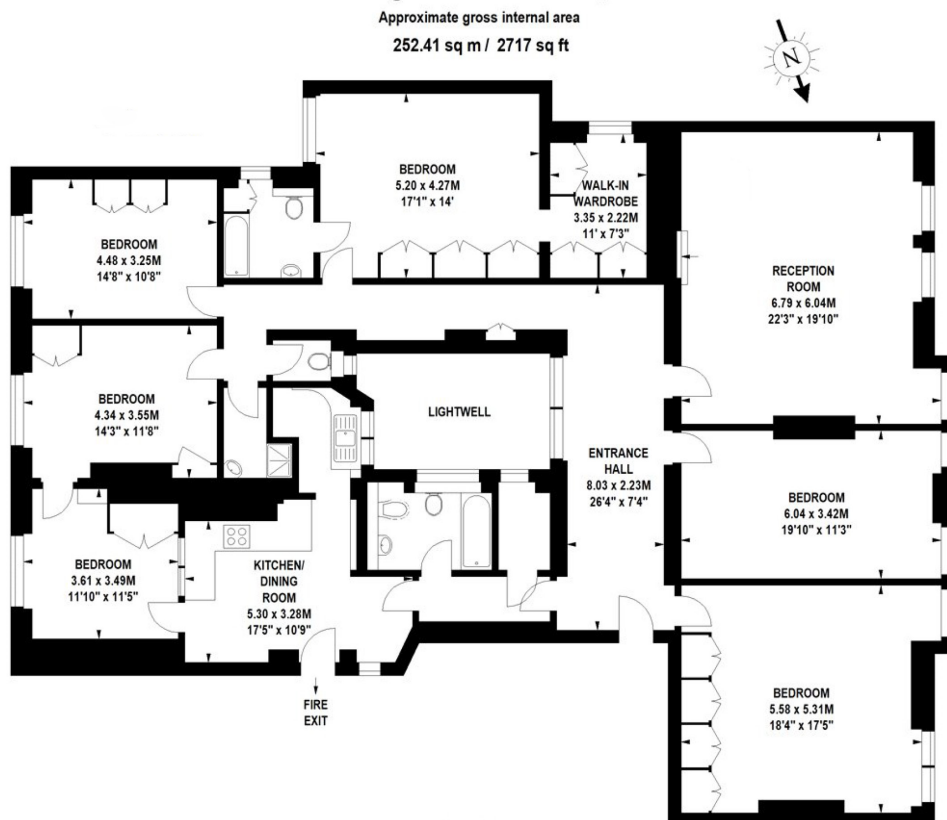
**2717 Sq Ft / 252.41 Sq m**

1 <sup>st</sup> Floor	6 Bedrooms
2 Bathrooms	1 Shower Room
1 Separate WC	1 Reception room
1 Kitchen	Lift





## Floor Plan





## Property 2

A split level flat with high ceilings, bay windows and a patio on the lower ground floor. Located in an attractive red brick mansion block, this property holds up with a lot of reconfiguration and renovation potential.

**1215 sq ft / 112.9 sq m**

2 Bedrooms      2 En suite Bathrooms

1 Separate WC      2 Reception room

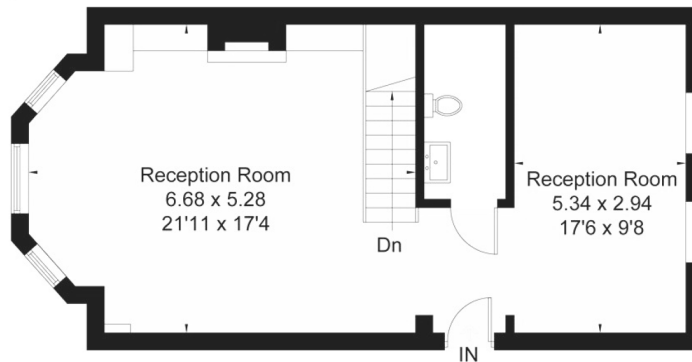
1 Kitchen      Patio



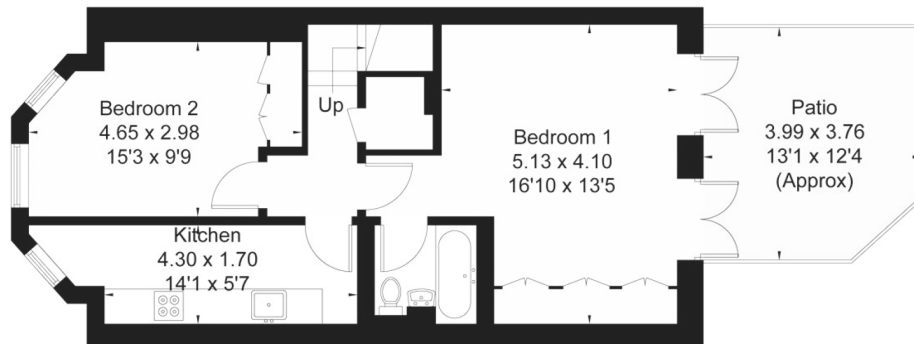


## Floor Plan

Gross Internal Area (approx) = 112.9 sq m / 1215 sq ft  
For identification only. Not to scale.



Raised Ground Floor



Lower Ground Floor



## Property 3

An attractive and well-preserved mews house with a garden and great potential for improvement.

**914 sq ft / 84.89 sq m**

3 Bedrooms      2 En Suite Bathroom

1 Shower room      1 Reception room

1 Dinning room      1 Kitchen

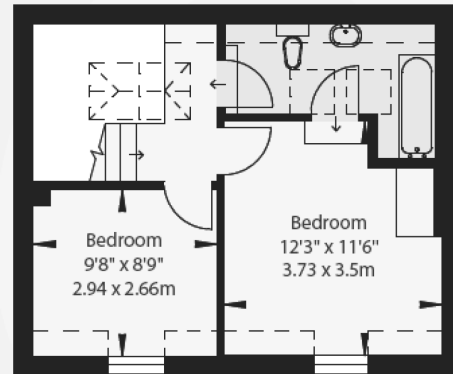
Garden



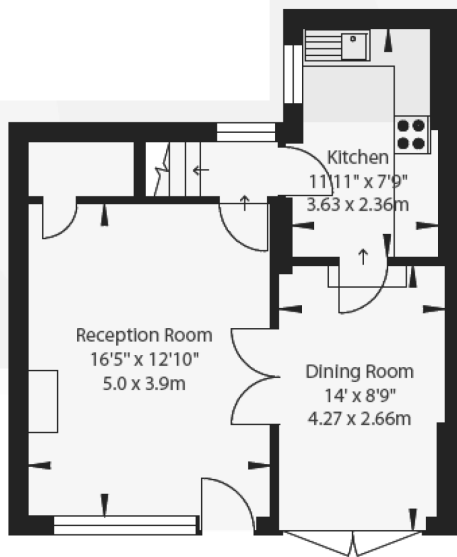




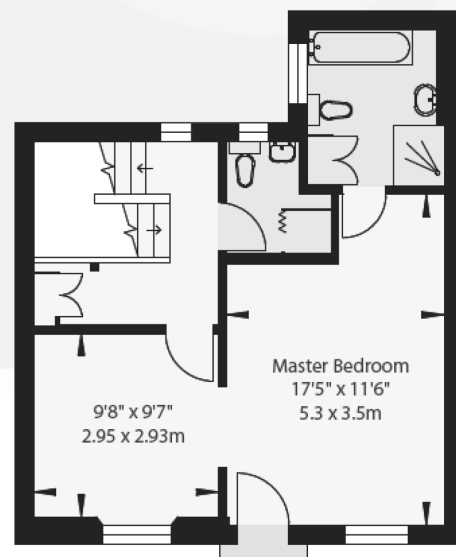
## Floor Plan



Second Floor



Ground Floor



First Floor





## Property 4

A bright and spacious 3rd floor flat with balcony, a spacious kitchen and 24h portorage, located in an attractive apartment block.

**1462 sq ft / 135.82 sq m**

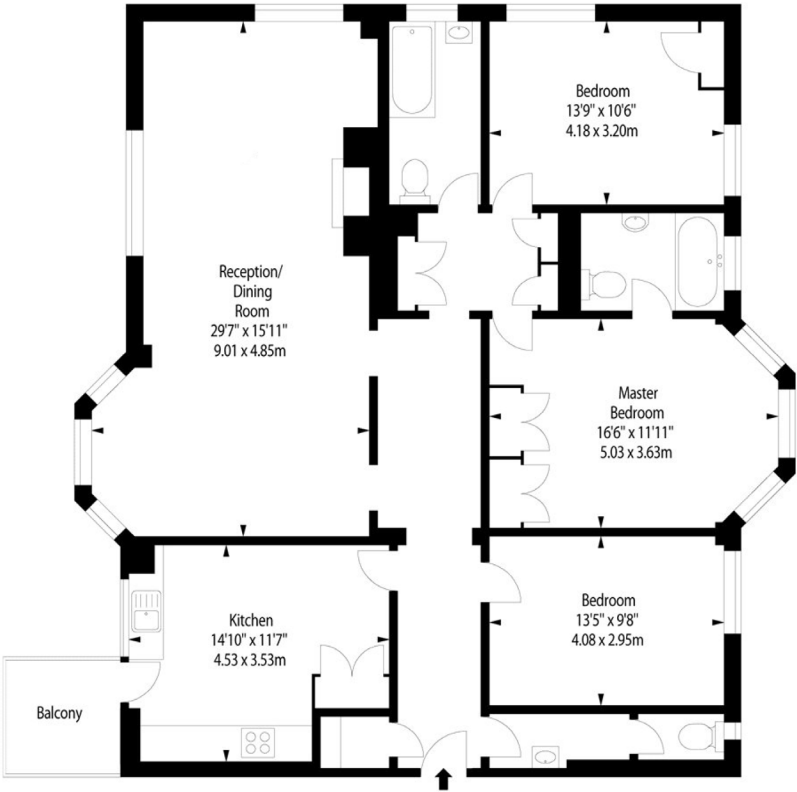
3 <sup>rd</sup> Floor	3 Bedrooms
1 Bathroom	1 En suite Bathroom
1 Guest WC	1 Reception room
1 Kitchen	Balcony





# Floor Plan

APPROX. GROSS INTERNAL AREA  
1462 Ft<sup>2</sup> - 135.82 M<sup>2</sup>





The four units on this list are great examples of properties that Landmass can source through our **Bespoke Residence Sourcing** service and then also add value through our **in-house Architecture & Interior Design** service.

Overall, helping you achieve a truly bespoke home with **savings between 10% and 20%** compared to purchasing a finished property available on the market.

For more detailed information send an email to **privateoffice@landmass.co.uk** or call us **02074398095**.





L A N D M A S S

L O N D O N

48 Beak Street, London - W1F 9RL

[www.landmass.co.uk](http://www.landmass.co.uk)

020 7439 8095