

Forney Explorer Communication Software



Software Installation & Quick Start User Guide

Minimum System Requirements

1. Pentium¹ class microprocessor
2. XP or Windows 7 (32 or 64-bit)²
3. CD-ROM drive
4. 40 Mb of free disk space
5. 1 Serial or USB communications port
6. 1 RS232 to RS485 converter compatible with communications port

NOTE: any previously installed version of Forney Explorer (FEX) software needs to be uninstalled before proceeding.

Hardware Installation

Each scanner must have a unique unit address. Forney's scanner each have a different method for setting the unit address. Refer to specific scanner documentation being used. UniFlame I scanner displays MODBUS / Node address as COMM. The UniFlame II refers to this as "MODBUS address".

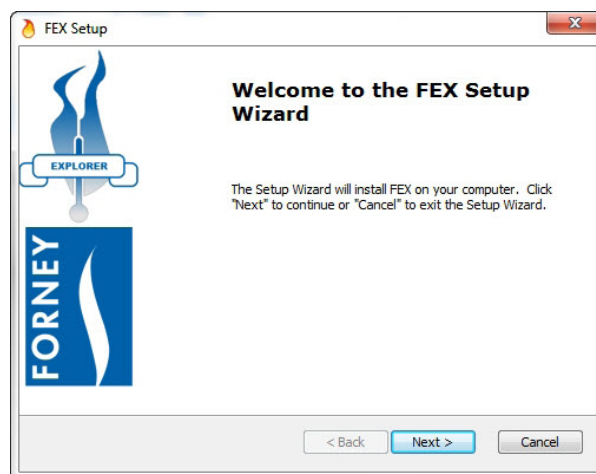
Scanners communicate over the data link via RS485. An RS232/RS485 converter is required for the Serial or USB Comm Port of the PC. Forney recommends using P/N 91948-98 port powered USB to RS485 converter.

Wiring Scanner to RS485

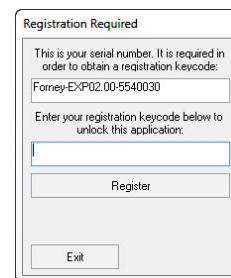
	<u>UniFlame II</u>	<u>UniFlame I</u>
TDA (-)	Brown/orange stripe	Brown
TDB (+)	Orange/Black stripe	Orange

Software Installation

1. Insert the FEX installation CD.
2. When the splash screen appears, click Install
3. Follow the installation Wizard default settings to load the program.



4. During installation a shortcut will be placed on your desktop. Double click this icon to start the FEX program.
5. The first time you launch the program you will be prompted to select a language. (English, French, German, Spanish)
6. Forney Explorer is registered software and during the startup process you will be prompted to provide an unlock code. When prompted, copy the serial number and either e-mail it to aftermarket@forneycorp.com or call tech support at 1-800-356-7740 for the registration code.
7. Once the software is successfully installed and registered it is time to create a project where all of the connected scanners will appear. From the "File" menu choose "New Project" and enter a suitable title.

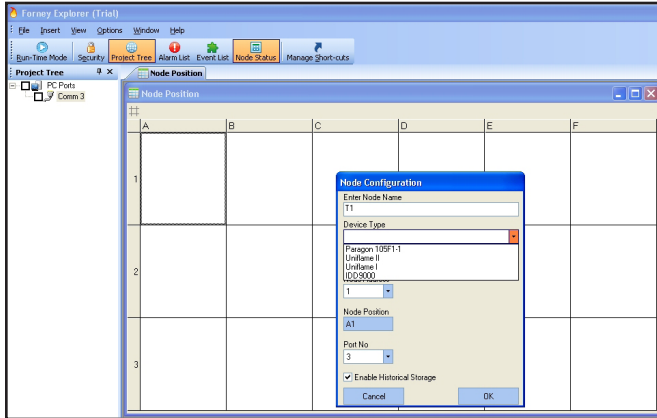


1. Pentium is a registered trademark of Intel
2. Windows is a registered trademark of Microsoft.

Configuring a Project

The program may be configured “on line” (with scanners connected) or “off line” (with scanners NOT connected). Either way of configuring requires all scanners be set-up with unique MODBUS / Comm addresses. If 2 scanners have the same address, communication will be corrupt and information will be lost. In order to add scanners “on line”, it is necessary to have all scanners connected together and communicating with the PC through the RS485 converter. Adding scanners “off line” will initially avoid problems with communication issues.

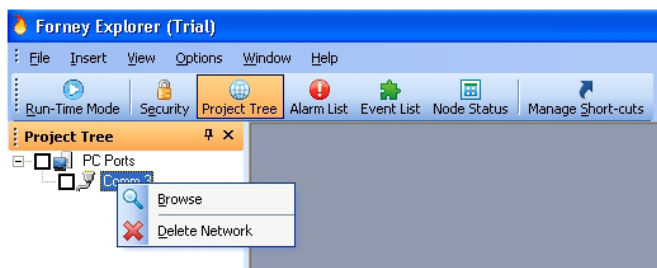
Off Line Allocation



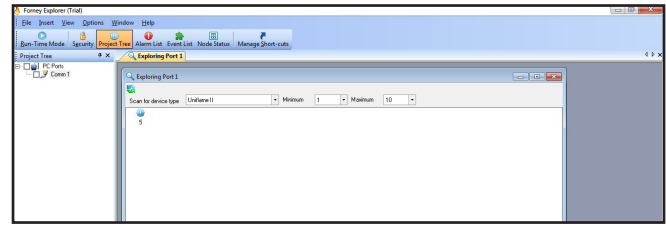
Open the Node Status screen by clicking on the Node Status Icon in the tool bar. Right click in the cell where a scanner will be located. Enter an appropriate Node Name, Device Type, Node (Modbus/Comm) Address, Comm Port Number and check Historical Storage, if desired. Remember, each scanner must have a unique Node address.

On Line Allocation

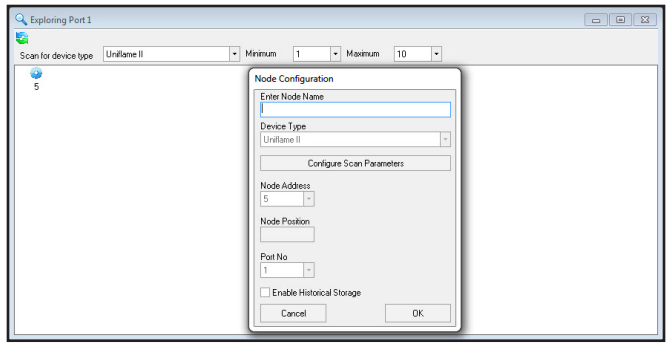
This method requires that all scanners are wired together with unique addresses and communicating to the PC via an RS485 adapter. Right click on the active Comm port and select “Browse”.



This command will instruct the system to search the connected network for all scanners that are connected. The following screen will be seen,

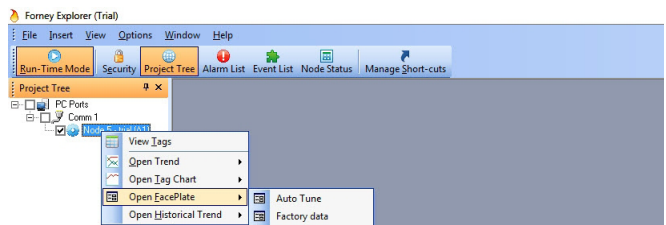


identifying every scanner that is found. Right click on each scanner to add a node to the project. Enter an appropriate Node Name, Node position and check Historical Storage if required. Device Type, Address and Port have already been filled in from the “Browse” command.



After successfully allocating all scanners it is now possible to monitor any or all of the scanners’ parameters.

To monitor a scanner, check the Node box to activate communication, then right click on the Node and select Open Trend, Open Tag Chart, Open Faceplate or Open Historical Trend.



For additional information and program options, please review Forney Manual 372001-13.