

US CONSTRUCTION FABRICS LLC

8 Ledge Rd, Windham, NH 03087

(603) 893-5480, Fax (603) 893-2154

www.usconstructionfabrics.com

CONSTRUCTION FABRICS, LINERS, & ENVIRONMENTAL PRODUCTS

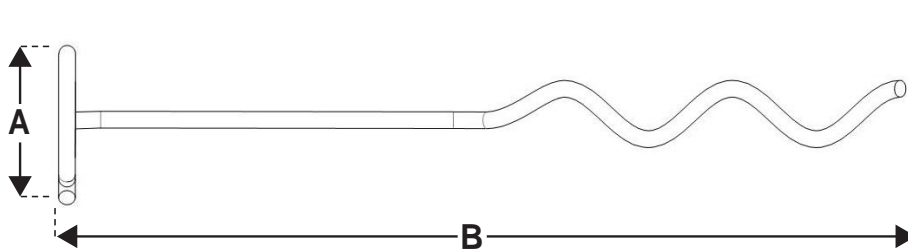
The TL-TA2 8" Twist Anchor holds all types of erosion control and soil stabilization matting securely in place. Easy to install and provides superior pull out resistance when compared with traditional pins.

FEATURES / BENEFITS

- Quick and easy to install with an electric drill and custom chuck
- Superior performance when compared to traditional straight pins
- Eliminates time & labor associated with replacing or reworking pins that have become loose or pulled out altogether
- The patent pending innovative design of the installation chuck allows the Twist Anchor to be installed to full depth without damaging the mat
- Integrated top coil form eliminates the need for a washer, spreads the load and helps secure the matting in place
- Extended tip allows faster placement and enhanced interaction with matting on install



SPECIFICATION



| TL-TA2 (8") | |
|-------------|--------|
| Dimension | Length |
| A | 1.38 |
| B | 7.87 |

INSTALLATION TOOLS



Chuck
(3.5 in)

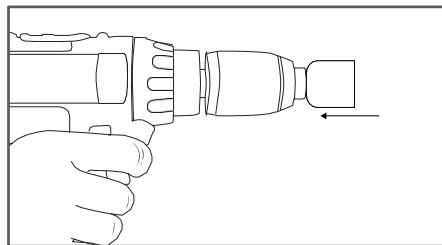


Extended
Chuck
(1ft 7 1/2 in)

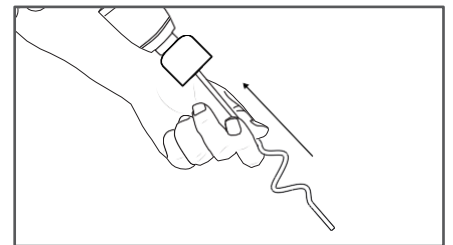
For more information contact us or visit our website - www.gripple.com

INSTALLATION

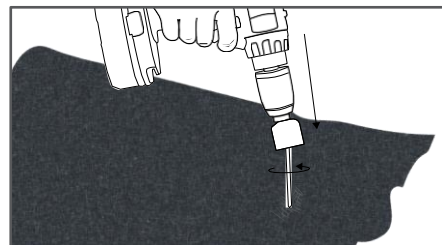
1.



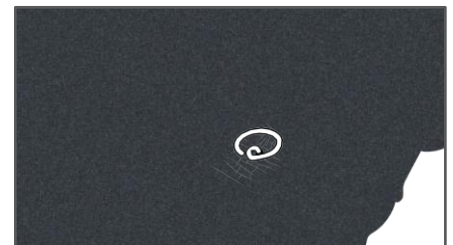
2.



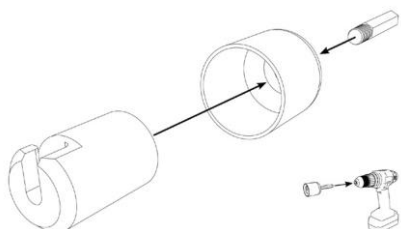
3.



4.



CHUCK ASSEMBLY



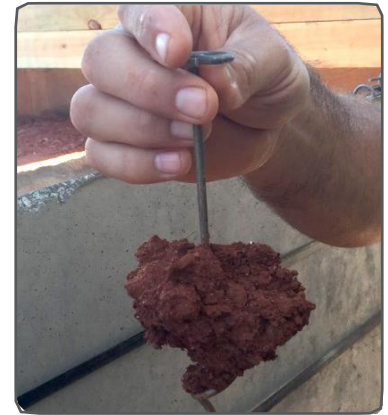
For more information on how to install the TL-TA1 visit our Youtube channel - GrippleTV. Alternatively see Installation Guidelines & Procedures.

TL-TA2 8" Twist Anchor












The Twist Anchor can be used in a variety of soils

Gripple performed actual pullout testing on many different anchoring devices. These tests recorded the pullout data in pounds of resistance (lbs).



Resistance to pull-out versus alternate anchoring techniques (lbs)

| | | ANCHOR DEVICE | | | | | | | | |
|-----------|--|---|---|---|---|---|--|---|---|---|
| | |  |  |  |  |  |  |  |  |  |
| | | TL-TA1 (8") | TL-TA1 (12") | TL-TA2 (8") | J-Hook (18") | Washer Pin (18") | Washer Pin (12") | Sod Staple (6") | Sod Staple (8") | Wood Stake (8") |
| SOIL TYPE | | | | | | | | | | |
| Clay | | 189 | 233 | 216 | 45 | 40 | 45 | 24 | 30 | 232 |
| Loam | | 163 | 198 | 132 | 34 | 14 | 22 | 20 | 48 | 153 |
| Sand | | 50 | 106 | 59 | 22 | 9 | 10 | 8 | 9 | 34 |