



Test data sheet

BASWA Acoustical Plaster

Technical and test information

General	BASWA acoustic uses independent third party labs to perform testing. Full report summaries are available. For further information about BASWA products, systems, or safety data, refer to the BASWA product data sheets, system data sheets, and safety data sheets.				
Fire rating	Class A fire rated per ASTM E84				
Mold and mildew	Rated 10 / 10, signifying no mold growth per ASTM D 3273-16				
VOC content	<p>≤ 0.5 mg/m³ , Passing CA Dept. of Public Health CDPH/EHLB/Standard Method Vers 1.2, 2017 USGBC LEED Version 4, BD&C, ID&C The WELL Building Standard ANSI/GBI 01, Green Building Assessment Protocol ANSI/ASHRAE/USGBC/IES Standard 189.1</p>				
Light reflectance	Light Reflectance L Value of 0.91 per the ASTM E 1477-98				
Thermal conductivity	<u>Thickness</u>	<u>1/U</u>	<u>U (W/m² K)</u>	<u>λ (W/m K)</u>	<u>R (m² K/W)</u>
	30 mm	0.68	1.47	0.044	0.68
	40 mm	0.97	1.03	0.041	0.97
	70 mm	1.82	0.55	0.038	1.82
Sustainability data	LEED, WELL, Mindful Materials, and Portico documentation available. For sustainability information about BASWA systems and products refer to BASWA sustainability data sheets.				
Disclaimer	Due to widely varying application conditions, a guarantee for installed materials cannot be reliant on this information. Product specifications are subject to change without notice. All rights reserved. Changes, reprints and copies, as well as electronic, reproduction, even in excerpts, require the explicit permission from BASWA acoustic North America.				

Acoustical absorption

BASWA Phon Classic Fine

A Mounting ASTM C423

System on concrete slab. No plenum.

NRC ratings

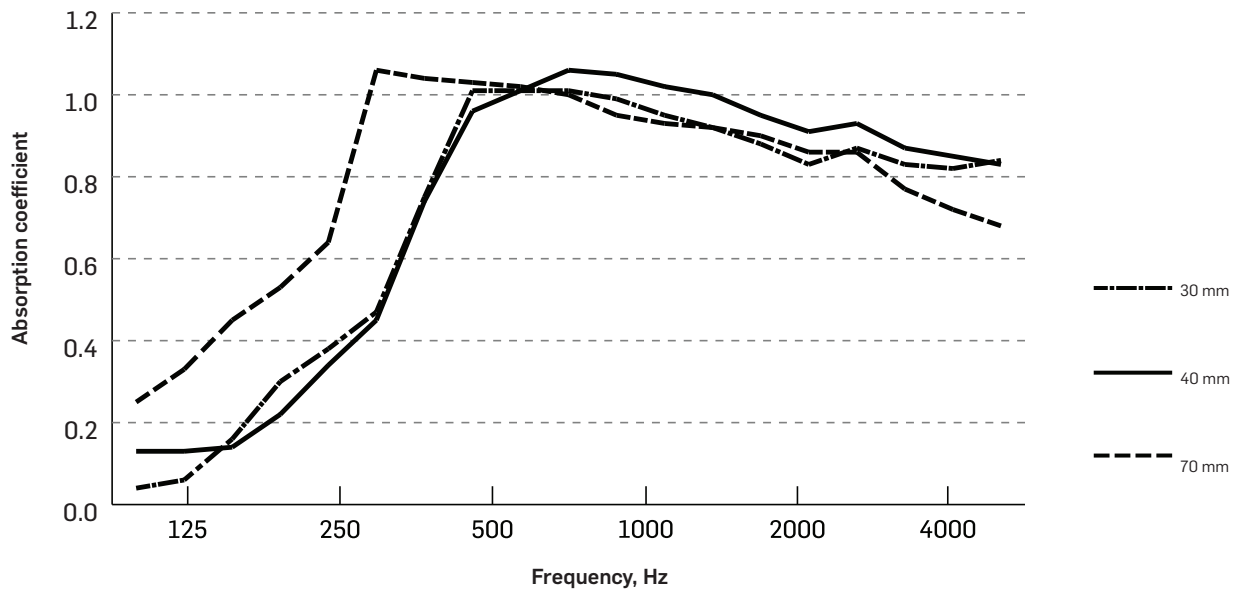
30 mm	0.80
40 mm	0.85
70 mm	0.95

SAA ratings

30 mm	0.84
40 mm	0.87
70 mm	0.93

Frequency absorption

	Frequency, Hz																		
	80	100	125	160	200	250	315	400	500	630	800	1000	1250	1600	2000	2500	3150	4000	5000
30 mm	0.04	0.06	0.16	0.30	0.38	0.47	0.75	1.01	1.01	1.01	0.99	0.95	0.92	0.88	0.83	0.87	0.83	0.82	0.84
40 mm	0.13	0.13	0.14	0.22	0.34	0.45	0.74	0.96	1.01	1.06	1.05	1.02	1.00	0.95	0.91	0.93	0.87	0.85	0.83
70 mm	0.25	0.33	0.45	0.53	0.64	1.06	1.04	1.03	1.02	1.00	0.95	0.93	0.92	0.90	0.86	0.86	0.77	0.72	0.68



Test data sheet | BASWA Acoustical Plaster 19-04

BASWA Phon Classic Fine

E Mounting ASTM C423

System with plenum. Typical installed conditions.

NRC ratings

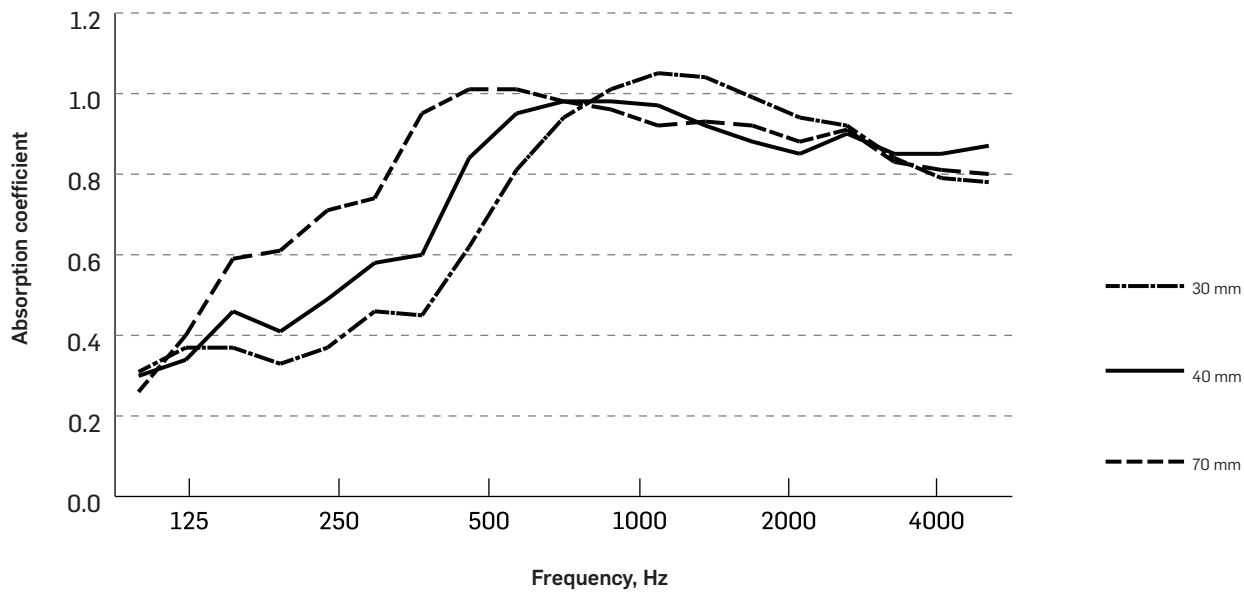
30 mm	0.80
40 mm	0.85
70 mm	0.90

SAA ratings

30 mm	0.80
40 mm	0.83
70 mm	0.91

Frequency absorption

	Frequency, Hz																		
	80	100	125	160	200	250	315	400	500	630	800	1000	1250	1600	2000	2500	3150	4000	5000
30 mm	0.31	0.37	0.37	0.33	0.37	0.46	0.45	0.62	0.81	0.94	1.01	1.05	1.04	0.99	0.94	0.92	0.84	0.79	0.78
40 mm	0.30	0.34	0.46	0.41	0.49	0.58	0.60	0.84	0.95	0.98	0.98	0.97	0.92	0.88	0.85	0.90	0.85	0.85	0.87
70 mm	0.26	0.40	0.59	0.61	0.71	0.74	0.95	1.01	1.01	0.98	0.96	0.92	0.93	0.92	0.88	0.91	0.83	0.81	0.80



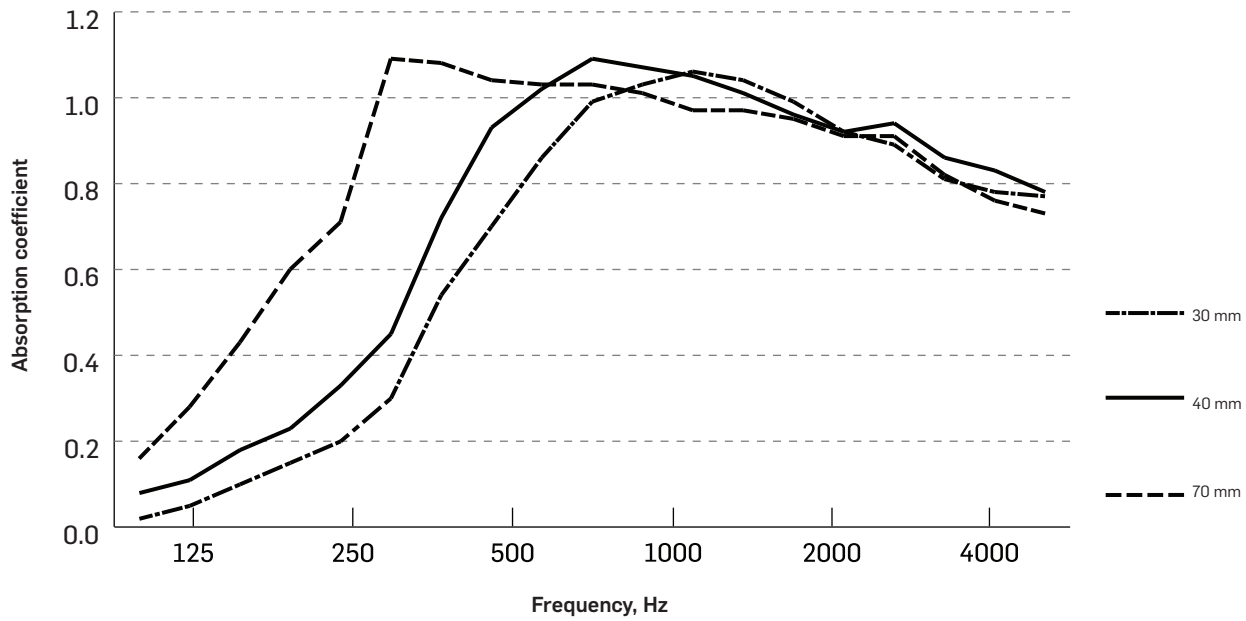
Test data sheet | BASWA Acoustical Plaster 19-04

NRC ratings	30 mm	0.80
	40 mm	0.85
	70 mm	1.00

SAA ratings	30 mm	0.79
	40 mm	0.87
	70 mm	0.98

Frequency absorption

	Frequency, Hz																			
	80	100	125	160	200	250	315	400	500	630	800	1000	1250	1600	2000	2500	3150	4000	5000	
30 mm	0.02	0.05	0.10	0.15	0.20	0.30	0.54	0.70	0.86	0.99	1.03	1.06	1.04	0.99	0.92	0.89	0.81	0.78	0.77	
40 mm	0.08	0.11	0.18	0.23	0.33	0.45	0.72	0.93	1.02	1.09	1.07	1.05	1.01	0.96	0.92	0.94	0.86	0.83	0.78	
70 mm	0.16	0.28	0.43	0.60	0.71	1.09	1.08	1.04	1.03	1.03	1.01	0.97	0.97	0.95	0.91	0.91	0.82	0.76	0.73	

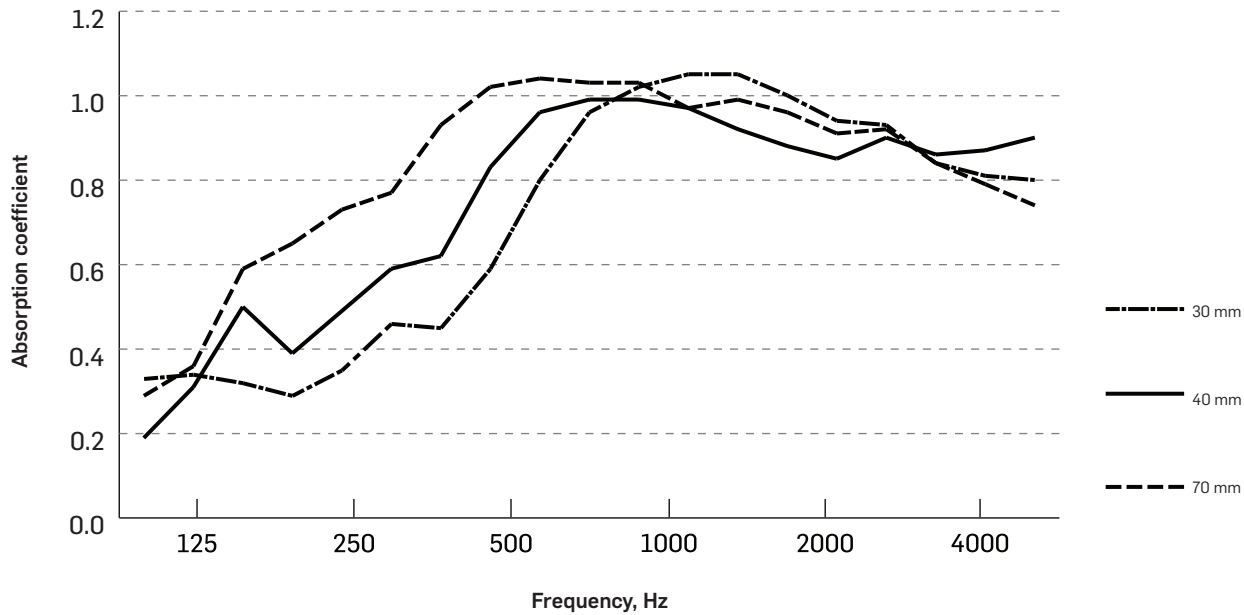


NRC ratings	30 mm	0.80
	40 mm	0.85
	70 mm	0.90

SAA ratings	30 mm	0.80
	40 mm	0.83
	70 mm	0.94

Frequency absorption

	Frequency, Hz																			
	80	100	125	160	200	250	315	400	500	630	800	1000	1250	1600	2000	2500	3150	4000	5000	
30 mm	0.33	0.34	0.32	0.29	0.35	0.46	0.45	0.59	0.80	0.96	1.02	1.05	1.05	1.00	0.94	0.93	0.84	0.81	0.80	
40 mm	0.19	0.31	0.50	0.39	0.49	0.59	0.62	0.83	0.96	0.99	0.99	0.97	0.92	0.88	0.85	0.90	0.86	0.87	0.90	
70 mm	0.29	0.36	0.59	0.65	0.73	0.77	0.93	1.02	1.04	1.03	1.03	0.97	0.99	0.96	0.91	0.92	0.84	0.79	0.74	



BASWA Phon Fine

A Mounting ASTM C423

System on concrete slab. No plenum.

NRC ratings 30 mm 0.80
 40 mm 0.85
 70 mm 1.00

SAA ratings 30 mm 0.80
 40 mm 0.87
 70 mm 0.97

Frequency absorption

	Frequency, Hz																			
	80	100	125	160	200	250	315	400	500	630	800	1000	1250	1600	2000	2500	3150	4000	5000	
30 mm	0.04	0.02	0.07	0.15	0.20	0.26	0.49	0.71	0.85	0.98	1.03	1.07	1.06	1.04	0.98	0.97	0.89	0.85	0.83	
40 mm	0.05	0.08	0.14	0.21	0.31	0.43	0.60	0.91	0.99	1.08	1.07	1.04	1.03	0.99	0.96	1.01	0.96	0.97	0.98	
70 mm	0.18	0.27	0.42	0.57	0.67	1.02	1.12	0.91	1.04	1.04	1.02	0.98	0.99	0.98	0.94	0.96	0.88	0.83	0.78	



Test data sheet | BASWA Acoustical Plaster 19-04

BASWA Phon Fine

E Mounting ASTM C423

System with plenum. Typical installed conditions.

NRC ratings 30 mm 0.80
 40 mm 0.85
 70 mm 0.95

SAA ratings 30 mm 0.81
 40 mm 0.82
 70 mm 0.96

Frequency absorption

	Frequency, Hz																			
	80	100	125	160	200	250	315	400	500	630	800	1000	1250	1600	2000	2500	3150	4000	5000	
30 mm	0.30	0.39	0.33	0.27	0.32	0.42	0.49	0.52	0.76	0.95	1.04	1.07	1.07	1.05	1.00	1.00	0.92	0.88	0.85	
40 mm	0.32	0.36	0.43	0.40	0.47	0.56	0.58	0.72	0.93	0.98	1.00	0.97	0.94	0.91	0.88	0.91	0.86	0.85	0.86	
70 mm	0.27	0.29	0.56	0.58	0.73	0.79	0.88	1.09	1.06	1.03	1.02	0.97	0.98	0.98	0.95	0.98	0.91	0.87	0.85	



Test data sheet | BASWA Acoustical Plaster 19-04

BASWA Phon Base

A Mounting ASTM C423

System on concrete slab. No plenum..

NRC ratings

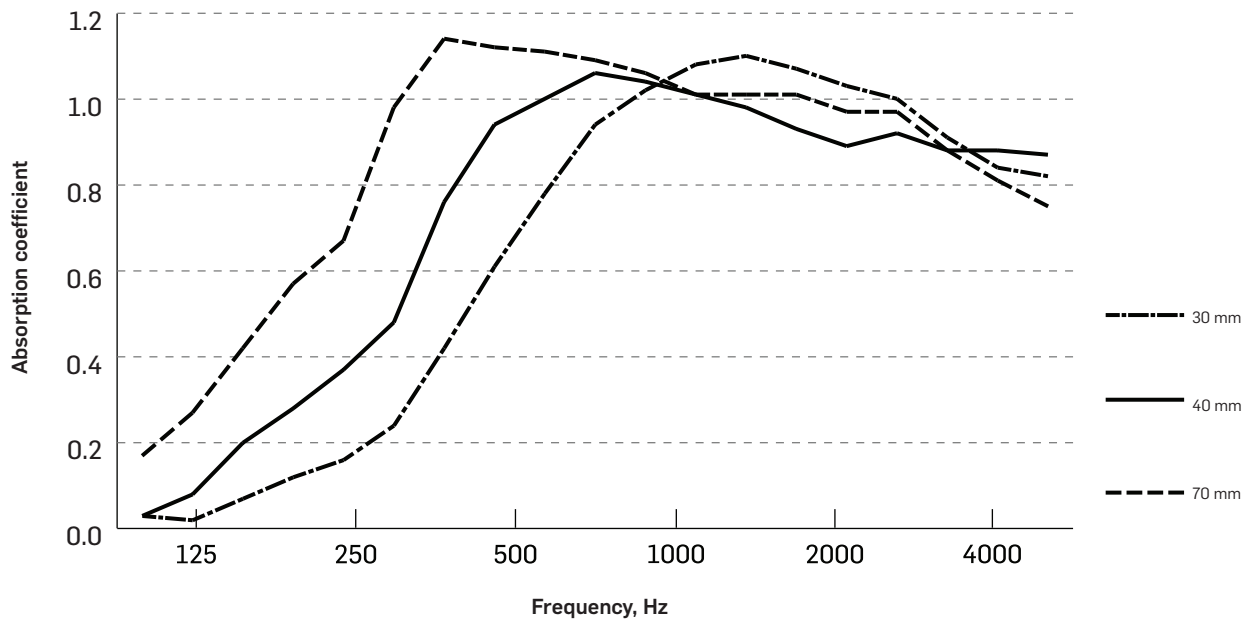
30 mm	0.80
40 mm	0.85
70 mm	1.00

SAA ratings

30 mm	0.79
40 mm	0.86
70 mm	1.01

Frequency absorption

	Frequency, Hz																			
	80	100	125	160	200	250	315	400	500	630	800	1000	1250	1600	2000	2500	3150	4000	5000	
30 mm	0.03	0.02	0.07	0.12	0.16	0.24	0.42	0.61	0.78	0.94	1.02	1.08	1.10	1.07	1.03	1.00	0.91	0.84	0.84	
40 mm	0.03	0.08	0.20	0.28	0.37	0.48	0.76	0.94	1.00	1.06	1.04	1.01	0.98	0.93	0.89	0.92	0.88	0.88	0.87	
70 mm	0.17	0.27	0.42	0.57	0.67	0.98	1.14	1.12	1.11	1.09	1.06	1.01	1.01	1.01	0.97	0.97	0.88	0.81	0.75	



Test data sheet | BASWA Acoustical Plaster 19-04

BASWA Phon Base

E Mounting ASTM C423

System with plenum. Typical installed conditions.

NRC ratings

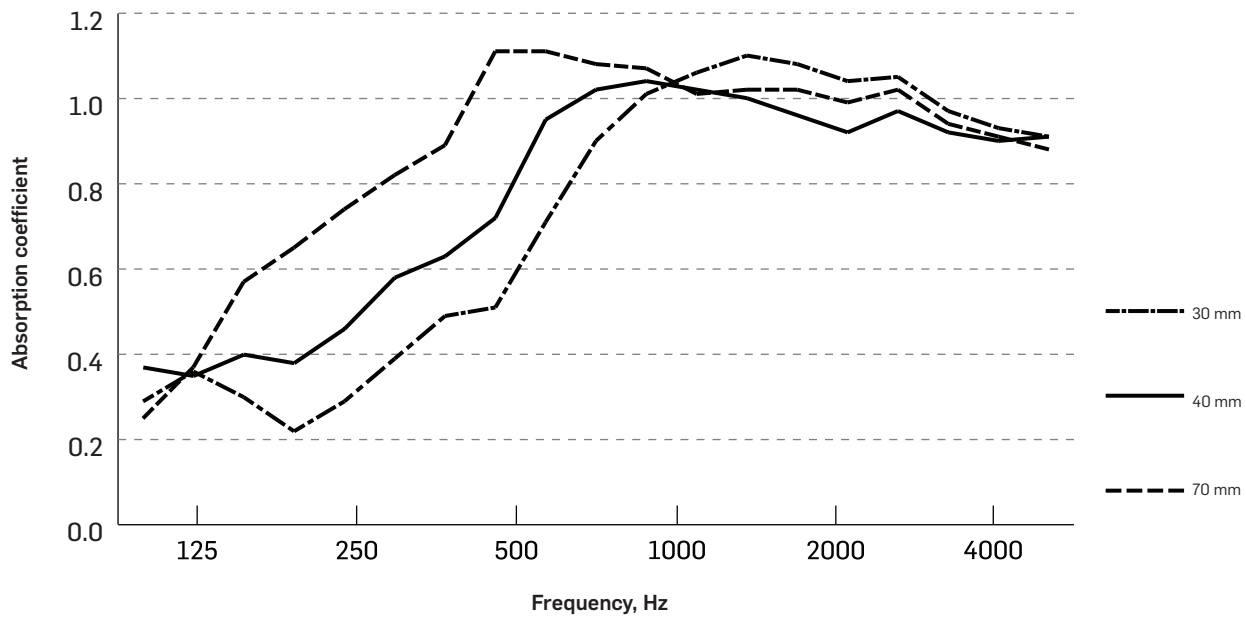
30 mm	0.80
40 mm	0.85
70 mm	1.00

SAA ratings

30 mm	0.80
40 mm	0.86
70 mm	0.99

Frequency absorption

	Frequency, Hz																			
	80	100	125	160	200	250	315	400	500	630	800	1000	1250	1600	2000	2500	3150	4000	5000	
30 mm	0.29	0.36	0.30	0.22	0.29	0.39	0.49	0.51	0.71	0.90	1.01	1.06	1.10	1.08	1.04	1.05	0.97	0.93	0.91	
40 mm	0.37	0.35	0.40	0.38	0.46	0.58	0.63	0.72	0.95	1.02	1.04	1.02	1.00	0.96	0.92	0.97	0.92	0.90	0.91	
70 mm	0.25	0.37	0.57	0.65	0.74	0.82	0.89	1.11	1.11	1.08	1.07	1.01	1.02	1.02	0.99	1.02	0.94	0.91	0.88	



Test data sheet | BASWA Acoustical Plaster 19-04