

RID

Remote Indicator and Activation Timer



DESCRIPTION

The RID is designed to attach to a standard single gang drywall ring or single gang box using the two 6-32 screws provided.

The RID has a 22 AWG three conductor pigtail which connects to the three terminals in the MPS or DTC-24 enclosure marked GBR. GBR signifies the color of the wire to be connected - green, black, or red.

22 AWG is sufficient for up to 100 feet, larger wire sizes may be required as the distance is increased.

The wiring is class 2, low voltage.

The RID is powered from the DTC-24 or MPS system.

The RID should not be installed in a two or more gang drywall ring.

RID OPERATION

The RID can activate a DTC-24 or MPS System. When the RID activates the system the bottom green light will be on to indicate power and the top red light will blink on/off to indicate that the system is being activated by the timer.

The system will either turn off when the RID times out or remain activated by the sensor(s) of the DTC-24 or MPS System.

When a sensor activates the system after the RID has timed out, the bottom green light will be on but the top green light will be off. The RID reset function will only reset the RID and turn off the system if no sensors are requiring system activation. If the sensors require system activation and the timer reset button is toggled, the timer will stop, but the system will remain on until the sensor has completed the cycle.

TIMER / RESET SWITCH

This switch is used to activate a DTC-24 or MPS system for a preset time.

SETTING THE RID TIMER

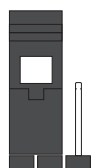
On the back of the RID is a jumper. Refer to Detail 1.

For slab snow melting the jumper should be in the left position as you face the back of the device, covering the left and center metal pins. This activates the system for approximately 5 hours. Refer to Detail 2.

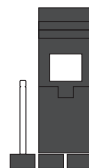
For roof and gutter deicing the jumper should be in the right position, covering the right and center pins. This activates the system for approximately 75 minutes. Refer to Detail 3.



Detail 1.



Detail 2.



Detail 3.