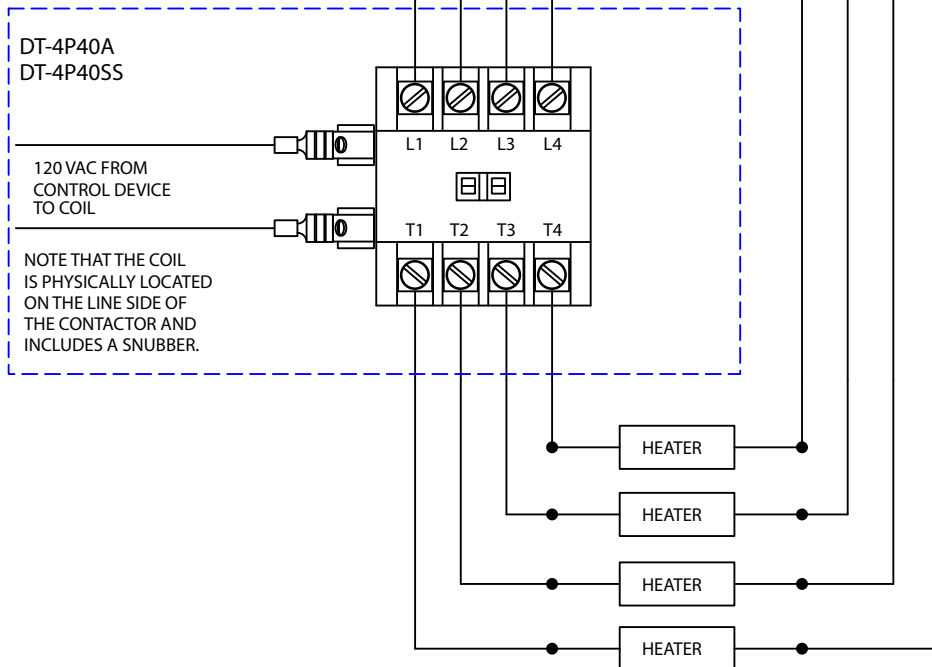
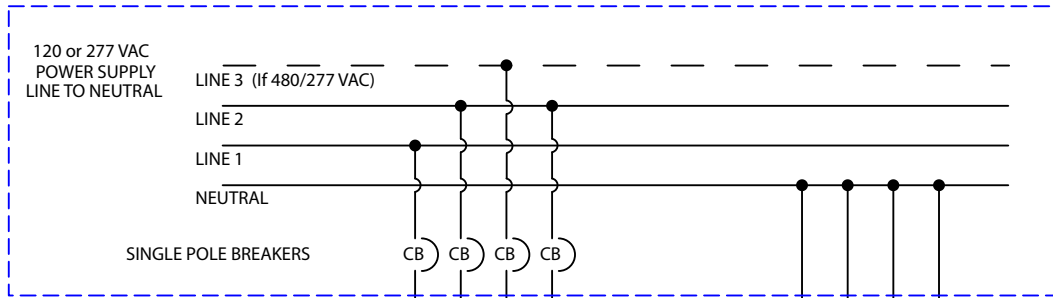
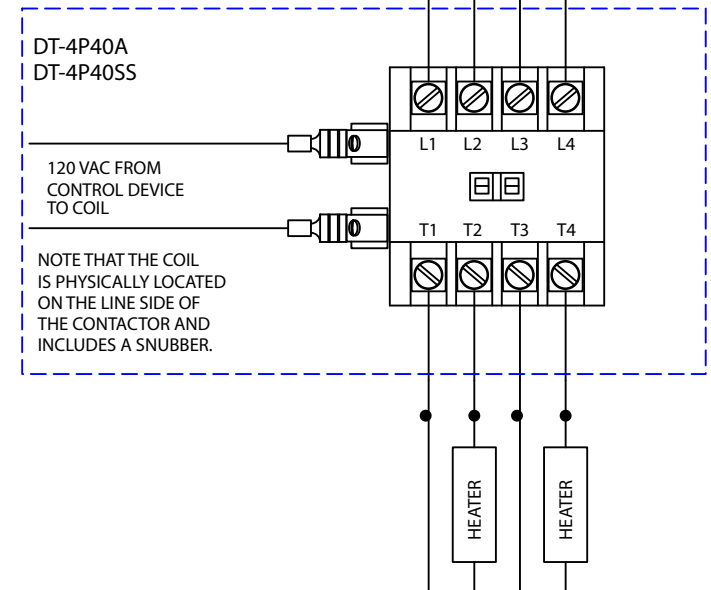
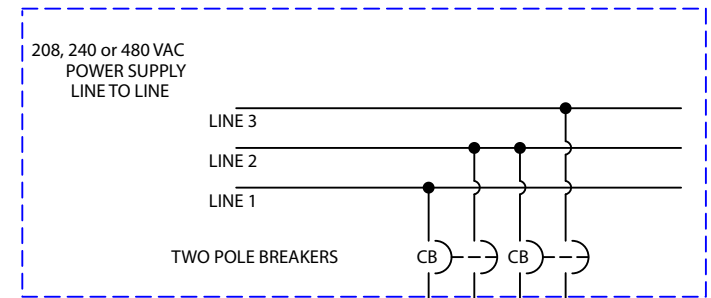


Typical Wiring for a Contactor Panel



TYPICAL LINE DRAWING FOR 120 VAC OR 277 VAC - UP TO FOUR CIRCUITS PER CONTACTOR

PANELS CONTAINING MULTIPLE CONTACTORS MUST HAVE THE COILS WIRED IN PARALLEL FROM THE CONTROL DEVICE. THIS IS TO BE WIRED IN THE PANEL. ONLY QUALIFIED ELECTRICIANS SHOULD PERFORM WORK IN THIS PANEL.



TYPICAL LINE DRAWING FOR 208, 240 AND 480 VAC - UP TO TWO CIRCUITS PER CONTACTOR

EACH POLE IS RATED FOR 50 AMPS RESISTIVE LOAD.
TORQUE SETTINGS:
BOX LUG - #14 - #10 35 Lb.-In.
BOX LUG - #8 40 Lb.-In.
BOX LUG - #6 45 Lb.-In.
AUXILIARY TERMINAL 7 Lb.-In.
CONTACTOR COIL IS 120 VOLT INPUT
CONTACTS ARE 600 VAC RATED