

LNR Panels

Low Noise Relay Panels



DESCRIPTION

The virtually silent power switching panels are ideally suited for floor warming, pipe tracing, and snow melting cables. The power relays are rated for up to 24 amps, the maximum allowable current for a 30 amp circuit breaker per the National Electrical Code. The relay panels feature NEMA 1 indoor enclosures, complete assembly, and equipped with clearly labeled terminals for ease of wiring. All components are UL recognized. The panels are for 120, 208, 240, or 277 VAC cables.

In floor warming installations the panels can be activated by 120 VAC switched from your Delta-Therm floor warming thermostat.

- NEMA 1 Enclosure
- One 2 Pole Relay Per Circuit
- Terminals For Field Wiring
- Control of 120, 208, 240, or 277 VAC Systems
- 120 VAC Input Required

MODEL # LNR-4

Enclosure:	NEMA 1
H/W/D:	10/8/4 Inches (25/20/10cm)
Contains:	2 relays for a total of 4 poles
Controls:	4 circuits at 120 or 277 VAC, or 2 circuits at 208 or 240 VAC

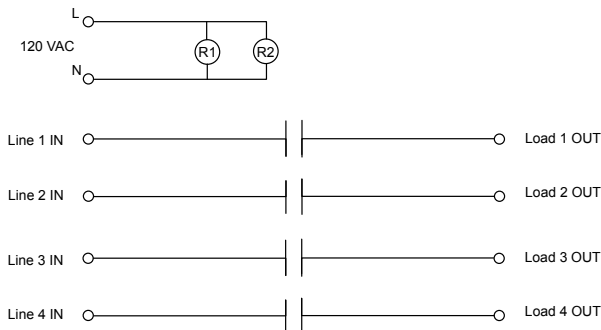
MODEL # LNR-8

Enclosure:	NEMA 1
H/W/D:	12/10/4 Inches (30/25/10cm)
Contains:	4 relays for a total of 8 poles
Controls:	8 circuits at 120 or 277 VAC, or 4 circuits at 208 or 240 VAC

MODEL # LNR-12

Enclosure:	NEMA 1
H/W/D:	16/12/4 Inches (41/30/10cm)
Contains:	6 relays for a total of 12 poles
Controls:	12 circuits at 120 or 277 VAC, or 6 circuits at 208 or 240 VAC

30 Amp Circuit 24 Amps Max
120, 208, 240 or 277 VAC Switching
Control power 120 VAC Only



Note: Does not contain breakers or over current devices.

APPLICATIONS

- Pipe Tracing, Snow Melting, Roof Deicing,
- Floor Warming, and Specialty Heating.

APPROVALS

