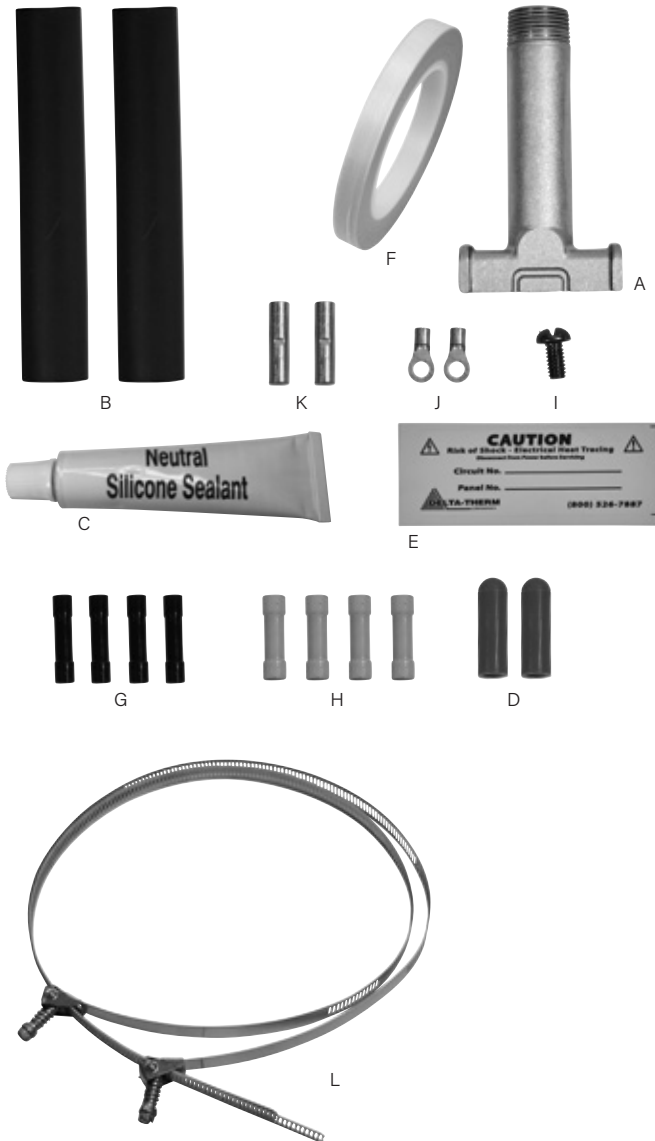


PCK-IN

IN Series Power Connection Kit



DESCRIPTION

PCK-IN electrical connection kits are a universal all-in-one connection kit for making the electrical connections for all IN Series self-regulating heating elements. The kit contains the necessary components (except conduit box) to make one power connection, one splice connection, and two end terminations.

The connection kit fits pipes up to 6" (15cm) IPS. For larger pipes, contact Delta-Therm. The PCK-IN kits are Factory Mutual approved for use in Ordinary Locations and Class I, Division 2, Groups B, C, and D; Class II, Division 2; and Class III, Division 2 areas.

- | | |
|---|------------------------------------|
| A. Aluminum Stand Off | F. Fiberglass Tape |
| B. Shrink Sleeve .5" x 5.5" (1 x 14cm) (2) | G. #16-14 Butt Connectors (4) |
| C. Silicone Sealant* | H. #12-10 Butt Connectors (4) |
| D. Heat Shrink Cap .5" x 1.5" (1 x 11cm) (2) | I. Ground Screw |
| E. Caution Label | J. Ring Connectors (2) |
| | K. Non-Insulated Butt Splice (2) |
| | L. Stainless Steel Pipe Straps (2) |

*California Prop 65 compliant.

