

DELTA-THERM

Illustrated Quick Install Guide

MPS - MMP LNR Panel

Wired to an LNR Panel

MPS-MMP is designed to detect snow or ice, and automatically activate roof deicing or snow melting cable(s).

MPS-MMP INCLUDES:

1. MPS Control Panel
2. MMP Moisture/Temperature Sensor

OPTIONAL ITEMS:

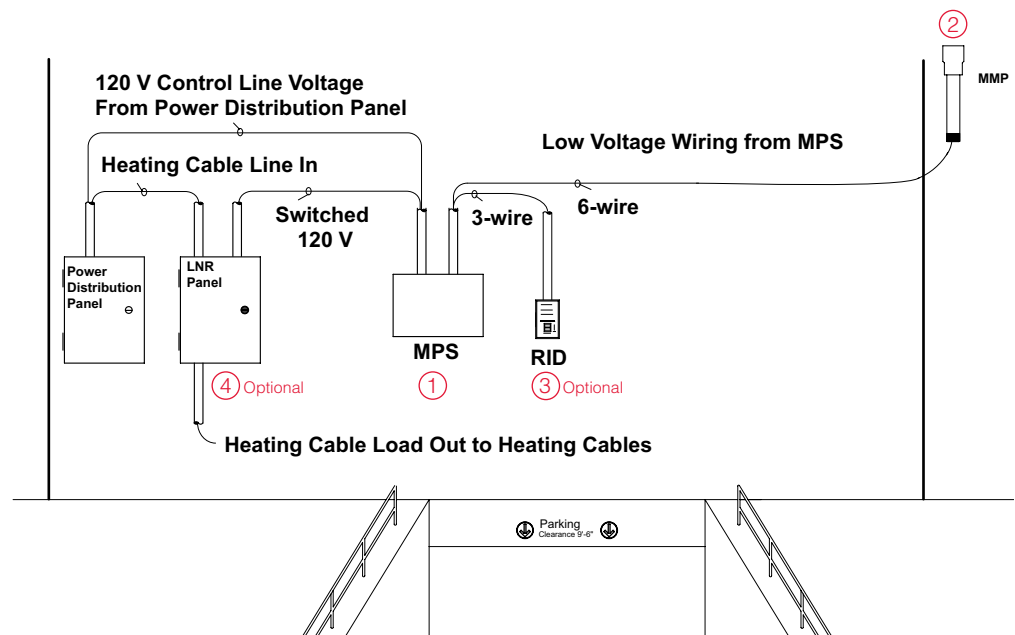
3. RID (Remote Indicator and Activation Timer)
4. LNR Panel



WARNING: This device must be installed by a qualified electrician. All assembly, installation, and test instructions must be followed. Improper installation can result in property damage, serious injury, and/or death due to electric shock. Call Delta-Therm at 1-800-526-7887 with any installation or operating questions.

Finished Install

NOTE: The National Electrical Code (NEC) requires 30mA Ground Fault Protection Equipment (GFPE) on this system. Check with all local codes prior to installation.



DELTA-THERM.COM

DELTA-THERM Corp., 6711 Sands Rd Ste A, Crystal Lake, IL 60014
(800) 526-7887 Fax (847) 526-4456

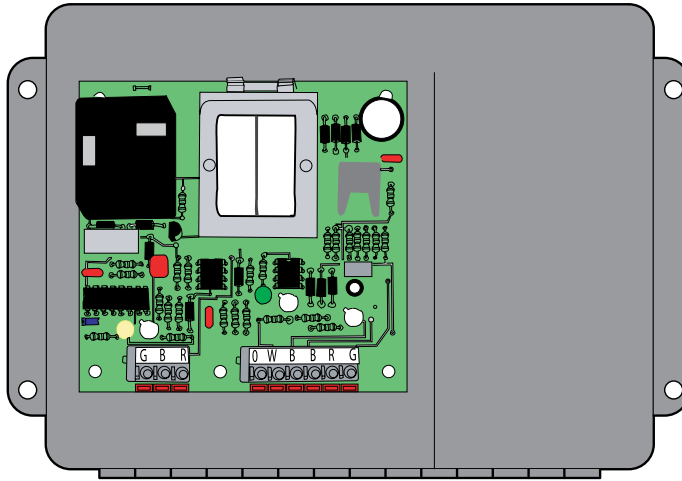


leaders in engineered heat trace

1

Installing the MPS-MMP Control Panel

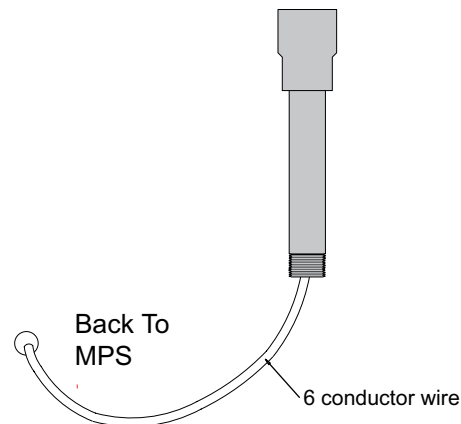
The MPS (NEMA 4) Control Panel must be installed by a qualified electrician.



NOTE: The National Electrical Code (NEC) requires 30mA Ground Fault Protection Equipment (GFPE) on this system. Check with all local codes prior to installation.

2

Installing the MMP Sensor



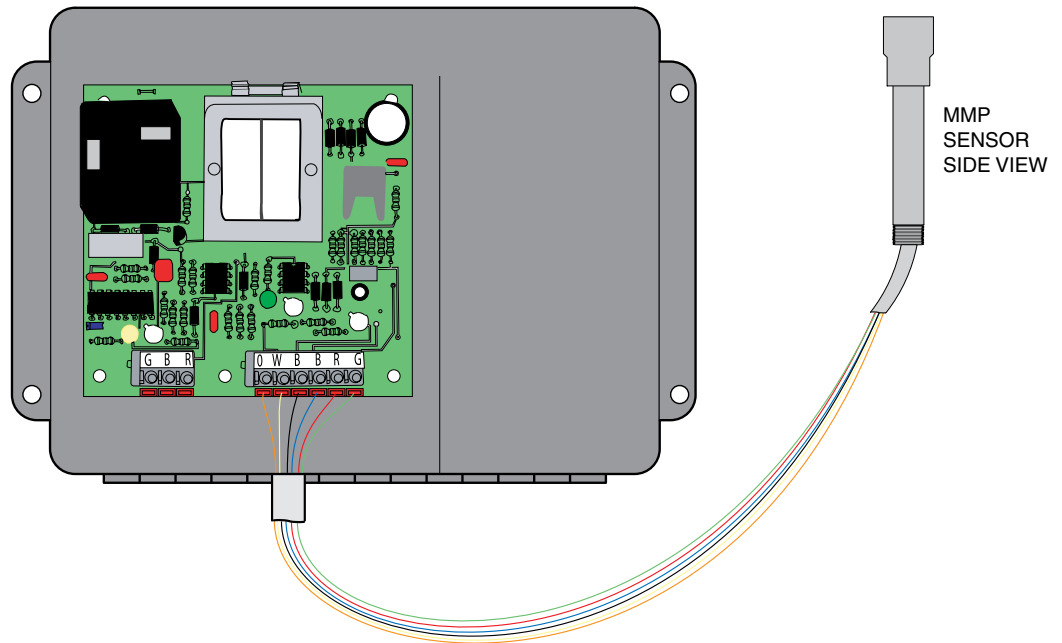
MMP SENSOR SIDE VIEW

MMP SENSOR FRONT VIEW

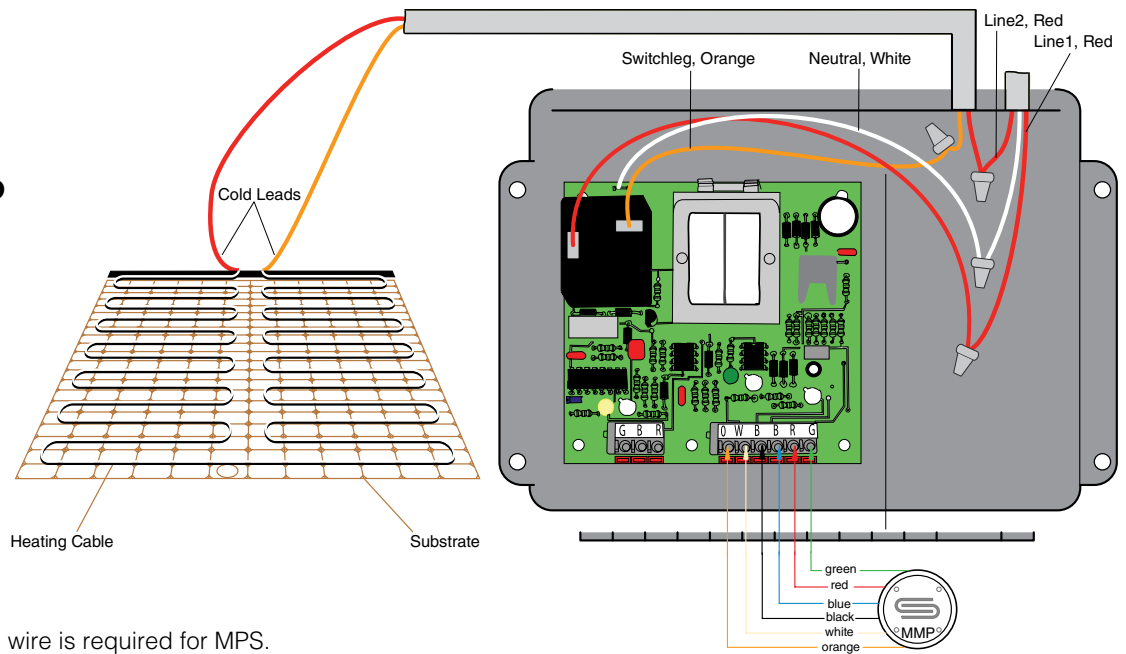
3

Wiring
the MMP
Sensor

orange	—	O
white	—	W
black	—	B
blue	—	B
red	—	R
green	—	G



4

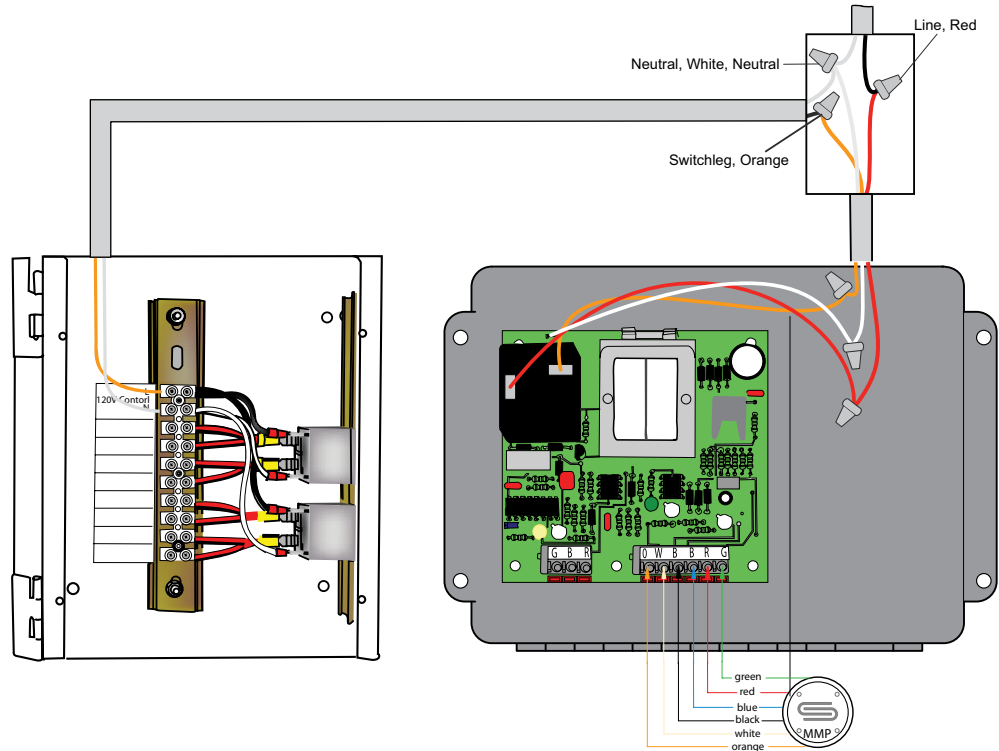
Wiring
MPS-MMP
240 VAC
to Heating
Cable

- At 240 VAC neutral wire is required for MPS.
- MPS can switch up to 24 amps.

5

Wiring MPS-MMP 120 VAC to an LNR Panel

NOTE: The National Electrical Code (NEC) requires 30mA Ground Fault Protection Equipment (GFPE) on this system. Check with all local codes prior to installation.



6

Installing and Wiring RID

