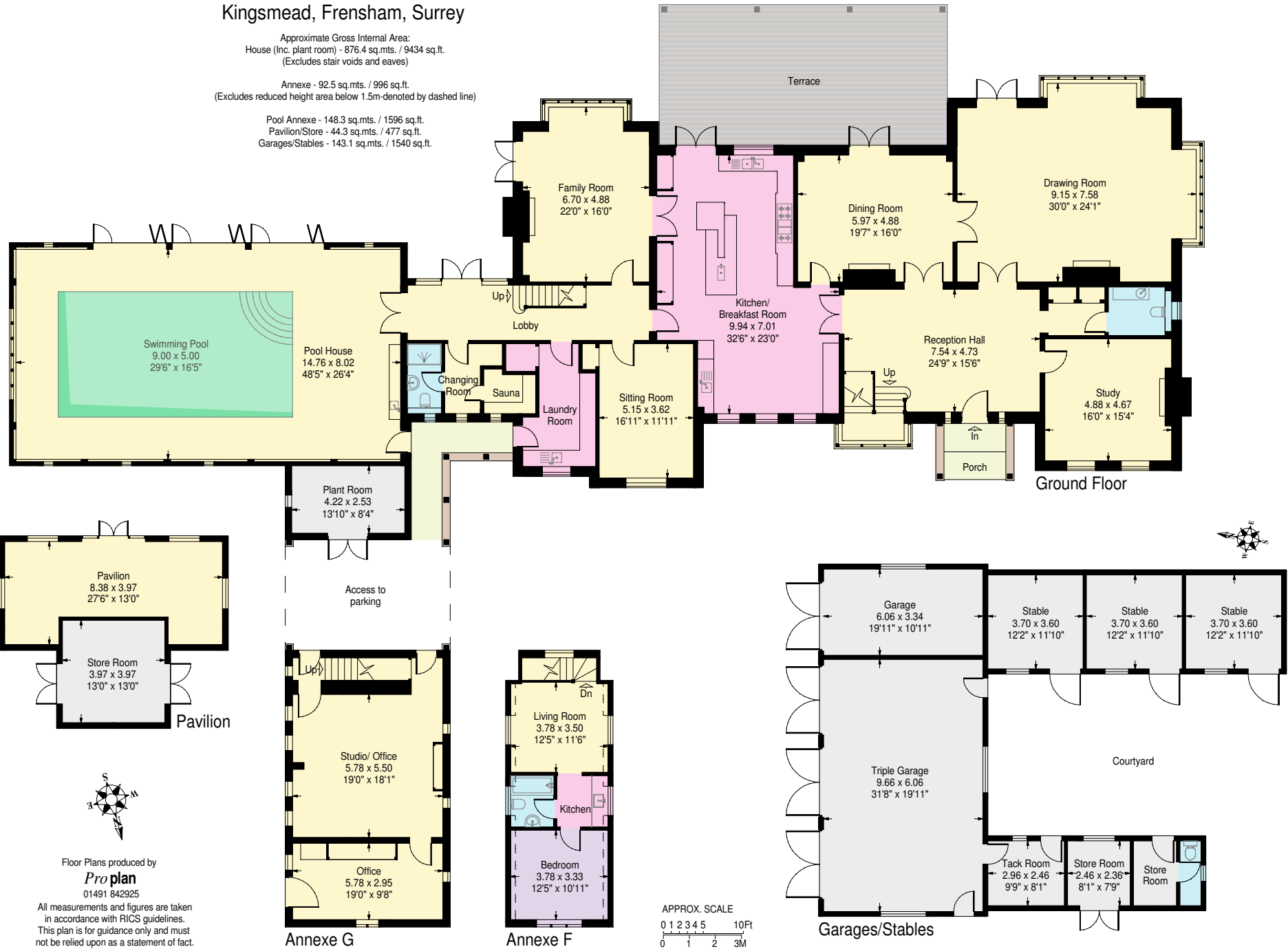


# Kingsmead, Frensham, Surrey

Approximate Gross Internal Area:  
 House (inc. plant room) - 876.4 sq.mts. / 9434 sq.ft.  
 (Excludes stair voids and eaves)

Annexe - 92.5 sq.mts. / 996 sq.ft.  
 (Excludes reduced height area below 1.5m-denoted by dashed line)

Pool Annexe - 148.3 sq.mts. / 1596 sq.ft.  
 Pavilion/Store - 44.3 sq.mts. / 477 sq.ft.  
 Garages/Stables - 143.1 sq.mts. / 1540 sq.ft.



Floor Plans produced by  
**Pro plan**  
 01491 842925

All measurements and figures are taken in accordance with RICS guidelines. This plan is for guidance only and must not be relied upon as a statement of fact.

Kingsmead, Frensham, Surrey



Floor Plans produced by  
**Pro plan**  
01491 842925

All measurements and figures are taken in accordance with RICS guidelines. This plan is for guidance only and must not be relied upon as a statement of fact.

APPROX. SCALE  
0 1 2 3 4 5 10Ft  
0 1 2 3M

