

# **EBY TRUCK BODY PARTS LIST**

REVISED: 8/25/2017

## TABLE OF CONTENTS

---

BODY MOUNTING KITS	2
BULKHEADS AND POCKETS	13
BUMPERS AND HITCHES	18
CASTINGS	22
ELECTRICAL	23
FRAME COVERS	27
LIGHTS	29
MISCELLANEOUS	30
MUDFLAPS AND WEIGHTS	31
SIDE KITS	34
SPLASH GUARDS	38
SUB FRAMES	39
TOOL BOXES	41

## BODY MOUNTING KITS

### 84" MOUNTING KIT – FOR SRW PICKUP DELETE



2ALM250A00027  
Z-MOUNT



2ALM125A00148  
SPLASH GUARD STRUT



2ALM125A00154  
CS SPLASH GUARD



2ALM125A00153  
RS SPLASH GUARD



2ALM125A00155  
MUDFLAP BRACKET



2ALM187A00277  
MUDFLAP FLAT



31Z00031  
FRAME COVER

97 1/4" MOUNTING KIT – DRW CAB/CHASSIS



2ALM125A00148  
SPLASH GUARD STRUT



2ALM125A00147  
CS SPLASH GUARD



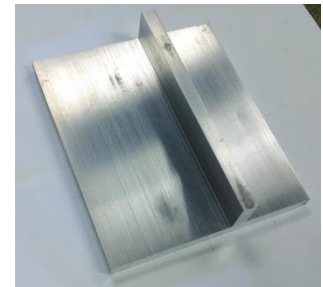
2ALM125A00146  
RS SPLASH GUARD



2ALM125A00142  
MUDFLAP BRACKET



2ALM187A00278  
MUDFLAP FLAT



1AL58080A012000  
TIE DOWN BRACKET



31Z00031  
FRAME COVER

101 1/4" MOUNTING KIT – DRW PICKUP DELETE



2ALM250A00027  
Z-MOUNT



2ALM125A00148  
SPLASH GUARD STRUT



2ALM125A00147  
CS SPLASH GUARD



2ALM125A00146  
RS SPLASH GUARD



2ALM125A00142  
MUDFLAP BRACKET

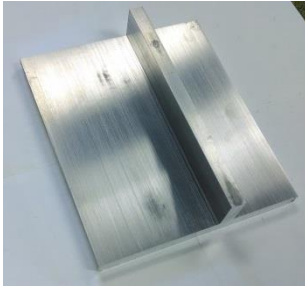


2ALM187A00278  
MUDFLAP FLAT



31Z00031  
FRAME COVER

GENERAL PURPOSE DUMP MOUNTING KIT- FORD, GM, RAM



1AL58080A012000  
TIE DOWN BRACKET



SA00173  
STEEL MUD FLAP BRACKET KIT  
FOR DUMP BODY



2ALM187A00651  
BRKR MTG BRKT



MF10065  
DUAL WHEEL MUDFLAP



2SSP050A00063  
22" WEIGHT WITH LOGO



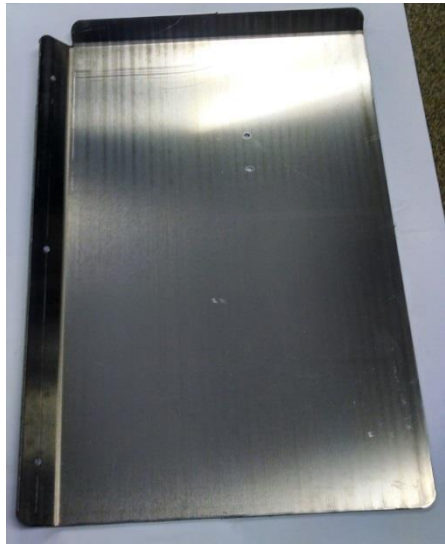
2ALM187A00549  
DEF FILL BRKT



2ALM187A00149  
FUEL FILL MTG BRKT



EL24405  
250A CIRCUIT BREAKER



2ALM125A00147  
CS DUAL WHEEL SPLASH GUARD



2ALM125A00146  
RS DUAL WHEEL SPLASH GUARD



31Z00044  
FRAME COVER ASSEMBLY



HOIST CONTROL W/CABLE



2ALM125A00567  
SPLASH GUARD STRUT (LONG)



2ALM187A00278  
MUDFLAP FLAT



GENERAL PURPOSE DUMP MOUNTING KIT- HINO



SA00814 MOUNTING  
BRACKETS AND SPACERS



FA89500 PINE TREE  
FASTENERS



RU31070 RUBBER 1/2" X 3" X 22'



SA00173  
STEEL MUD FLAP  
BRACKET KIT



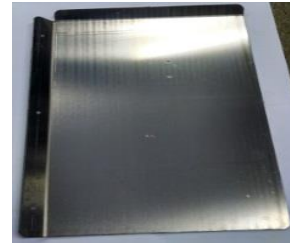
2ALM187A00651  
BRKR MTG BRKT



MF10065  
DUAL WHEEL MUDFLAP



2SSP050A00063  
22" WEIGHT WITH LOGO



2ALM125A00147  
CS SPLASH GUARD



2ALM187A00149  
FUEL FILL MTG BRKT (DUMP)



EL24405  
250A CIRCUIT BREAKER



2ALM187A00549  
DEF FILL BRKT (DUMP)





2ALM125A00146  
RS DUAL WHEEL SPLASH GUARD



31Z00044  
FRAME COVER ASSEMBLY



HOIST CONTROL W/ CABLE



2ALM187A00278  
MUDFLAP FLAT



2ALM125A00567  
SPLASH GUARD STRUT (LONG)

GENERAL PURPOSE DUMP MOUNTING KIT-ISUZU



SA00815 MOUNTING  
BRACKETS AND SPACERS



FA89500 PINE TREE  
FASTENERS



RU31070 RUBBER 1/2"X 3"X 22'



SA00173  
STEEL MUD FLAP  
BRACKET KIT



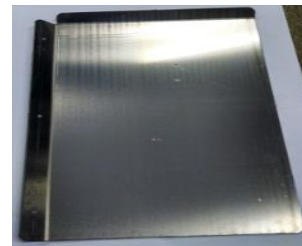
2ALM187A00651  
BRKR MTG BRKT



MF10065  
DUAL WHEEL MUDFLAP



2SSP050A00063  
22" WEIGHT WITH LOGO



2ALM125A00147  
CS SPLASH GUARD



2ALM187A00149  
FUEL FILL MTG BRKT



EL24405  
250A CIRCUIT BREAKER



2ALM187A00549  
DEF FILL BRKT



2ALM125A00146  
RS DUAL WHEEL  
SPLASH GUARD



31Z00044  
FRAME COVER ASSEMBLY



Hoist Control W/Cable



2ALM187A00278  
MUDFLAP FLAT

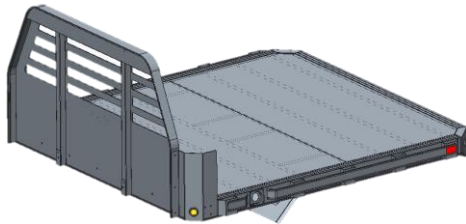


2ALM125A00567  
SPLASH GUARD STRUT (LONG)

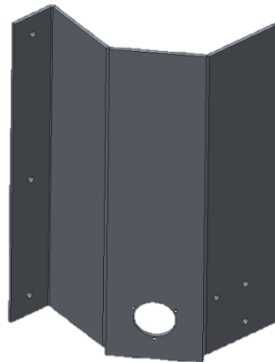
<b>BODY MOUNTING KITS</b>		<b>QTY</b>
<b>84" MOUNTING KIT</b>	31Z00010	
BOLT ON SPLASH GUARD STRUT	2ALM125A00148	2
BOLT ON SPLASH GUARD CS	2ALM125A00154	1
BOLT ON SPLASH GUARD RS	2ALM125A00153	1
MUDFLAP BRACKET	2ALM125A00155	2
MUDFLAP FLAT	2ALM187A00277	2
FRAME COVER	31Z00031	1
Z-MOUNTS	2ALM250A00027	4
<b>97 1/4" MOUNTING KIT</b>	31Z00008	
BOLT ON SPLASH GUARD STRUT	2ALM125A00148	2
BOLT ON SPLASH GUARD CS	2ALM125A00147	1
BOLT ON SPLASH GUARD RS	2ALM125A00146	1
MUDFLAP BRACKET	2ALM125A00142	2
MUDFLAP FLAT	2ALM187A00278	2
TIE DOWN BRACKET	1AL58080A012000	4
FRAME COVER	31Z00031	1
<b>101 1/4" MOUNTING KIT</b>	31Z00009	
BOLT ON SPLASH GUARD STRUT	2ALM125A00148	2
BOLT ON SPLASH GUARD CS	2ALM125A00147	1
BOLT ON SPLASH GUARD RS	2ALM125A00146	1
MUDFLAP BRACKET	2ALM125A00142	2
MUDFLAP FLAT	2ALM187A00278	2
FRAME COVER	31Z00031	1
Z-MOUNTS	2ALM250A00027	4
<b>GEN PURPOSE DUMP MOUNTING KIT- FORD, GM, RAM</b>		
TIE DOWN BRACKETS	1AL58080A012000	4
MUDFLAP BRACKET KIT (INCLUDE C/S AND R/S BRACKET)	SA00173	1
MUDFLAP FLATS	2ALM187A00278	2
MUDFLAPS 22"X 30"X3/4"	MF10065	2
MUDFLAP WEIGHTS SS EBY	2SSP050A00063	2
DEF FILL BRACKET	2ALM125A00549	1
FUEL FILL BRACKET	2ALM125A00149	1
250 AMP BREAKER MOUNTING BRACKET	2ALM187A00651	1
250 AMP CIRCUIT BREAKER	EL24405	1
C/S SPLASH GUARD	2ALM125A00147	1
R/S SPLASH GUARD	2ALM125A00146	1
SPLASH GUARD STRUT LONG	2ALM125A00567	2
FRAME COVER ASSEMBLY	31Z00044	1

HOIST CONTROL W/CABLE		1
<b>GEN PURPOSE DUMP MOUNTING KIT-HINO</b>		
MOUNTING BRACKETS AND SPACERS	SA00814	6
PINE TREE FASTENERS (USED TO ATTACH RUBBER TO SUBFRAME)	FA89500	24
RUBBER ½"X 3"X 22'	RU31070	22'
MUDFLAP BRACKET KIT (INCLUDE C/S AND R/S BRACKET)	SA00173	1
MUDFLAP FLAT	2ALM187A00278	2
MUDFLAPS 22"x30"x3/4"	MF10065	2
MUDFLAP WEIGHTS SS EBY	2SSP050A00063	2
DEF FILL BRACKET	2ALM187A00549	1
FUEL FILL BRACKET	2ALM187A00149	1
250 AMP BREAKER MOUNTING BRACKET	2ALM187A00651	1
250 AMP CIRCUIT BREAKER	EL24405	1
C/S SPLASH GUARD	2ALM125A00147	1
R/S SPLASH GUARD	2ALM125A00146	1
SPLASH GUARD STRUT LONG	2ALM125A00567	2
HOIST CONTROL W/ CABLE		1
FRAME COVER ASSEMBLY	31Z00044	1
<b>GEN PURPOSE DUMP MOUNTING KIT-ISUZU</b>		
MOUNTING BRACKETS AND SPACERS	SA00815	6
PINE TREE FASTENERS (USED TO ATTACH RUBBER TO SUBFRAME)	FA89500	24
RUBBER ½"x3" X 22'	RU31070	22'
MUDFLAP BRACKET KIT (INCLUDE C/S AND R/S BRACKET)	SA00173	1
MUDFLAP FLATS	2ALM187A00278	2
MUDFLAPS 22"x30"x3/4"	MF10065	2
MUDFLAP WEIGHTS SS EBY	2SSP050A00063	2
DEF FILL BRACKET	2ALM187A00549	1
FUEL FILL BRACKET	2ALM187A00149	1
250 AMP BREAKER MOUNTING BRACKET	2ALM187A00651	1
250 AMP CIRCUIT BREAKER	EL24405	1
C/S SPLASH GUARD	2ALM125A00147	1
R/S SPLASH GUARD	2ALM125A00146	1
SPLASH GUARD STRUT LONG	2ALM125A00567	2
HOIST CONTROL W/ CABLE		1
FRAME COVER ASSEMBLY	31Z00044	1

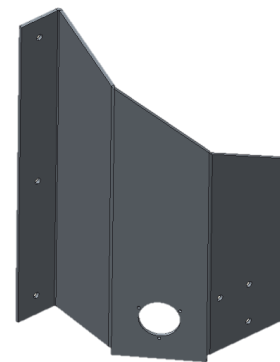
## BULKHEADS/POCKETS



FLATBED EXAMPLE

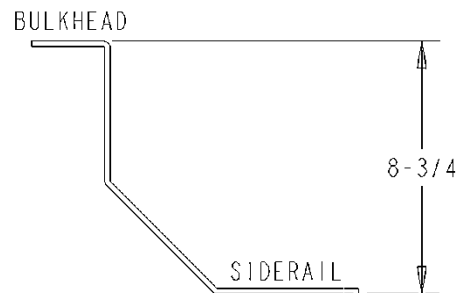


STRAIGHT WING  
BRACKET EXAMPLE

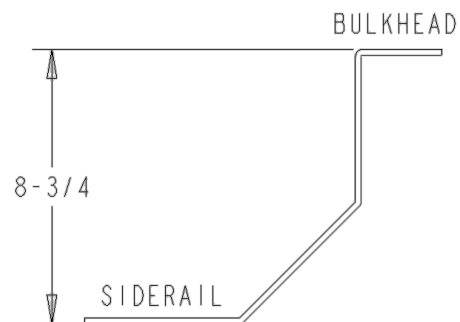


TAPERED WING  
BRACKET EXAMPLE

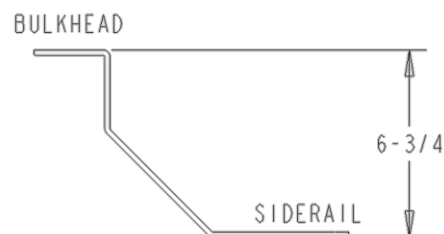
TOP VIEW  
2ALM187A00267 AND 2ALM187A00219  
ROAD SIDE WING BRACKET FOR 101.25"



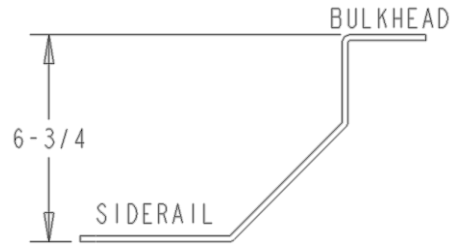
TOP VIEW  
2ALM187A00268 AND 2ALM187A00221  
CURB SIDE WING BRACKET FOR 101.25"



TOP VIEW  
2ALM187A00218 AND 2ALM187A00213  
ROAD SIDE WING BRACKET FOR 97.25"



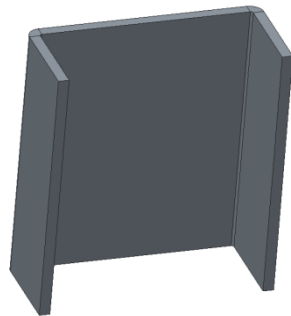
TOP VIEW  
2ALM187A00220 AND 2ALM187A00214  
CURB SIDE WING BRACKET FOR 97.25"



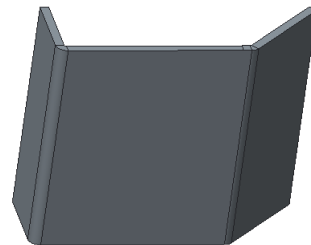
TOP VIEW  
2ALM187A00265 AND 2ALM187A00242  
ROAD SIDE WING BRACKET FOR 84"



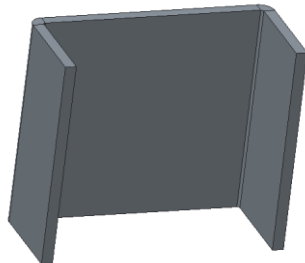
TOP VIEW  
2ALM187A00266 AND 2ALM187A00243  
CURB SIDE WING BRACKET FOR 84"



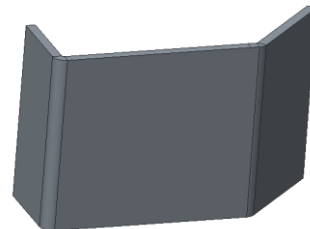
2ALM187A00216  
SQUARE STAKE POCKET



2ALM187A00217  
45° SQUARE STAKE POCKET

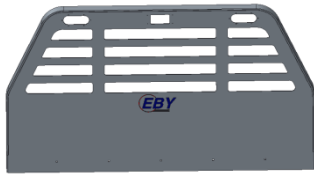


2ALM187A00254  
3 1/2" REAR STAKE POCKET

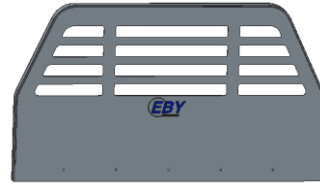


2ALM187A00257  
45° 3 1/2" REAR STAKE POCKET

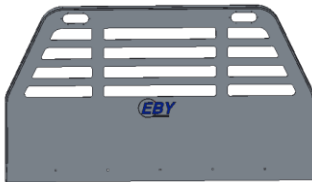




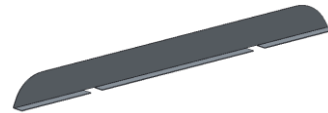
31E00010  
STT BULKHEAD ASSEMBLY



31E00009  
BULKHEAD ASSEMBLY W/O LIGHTS



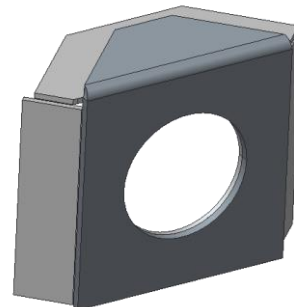
31E00017  
QUADRA BULKHEAD ASSEMBLY



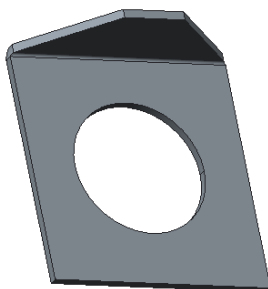
2ALM125A00145  
BULKHEAD COVER



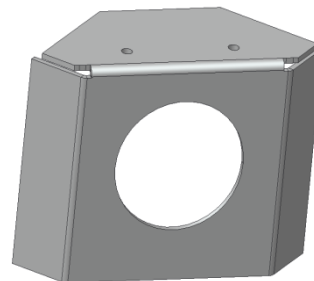
1AL58071A151375  
BULKHEAD BAR



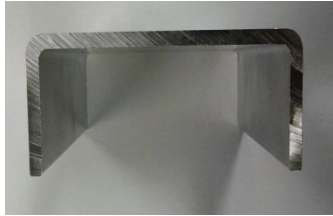
31E00006  
FRONT CORNER ASSEMBLY



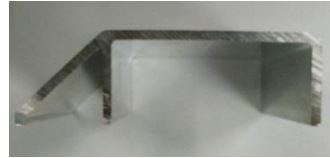
2ALM125A00143  
FRONT CORNER COVER



2ALM125A00144  
FRONT CORNER INSIDE



AL59020  
EXTRUDED STAKE POCKET



AL59030  
EXTRUDED TAPERED STAKE POCKET

<b>BULKHEADS / POCKETS</b>	
BULKHEAD ASSEMBLY WITH STT AND WELDON LIGHTS	31E00010
BULKHEAD ASSEMBLY W/OUT LIGHTS	31E00009
BULKHEAD ASSEMBLY WITH QUADRA LIGHT	31E00017
BULKHEAD COVER	2ALM125A00145
BULKHEAD BAR	1AL58071A151375
FRONT CORNER ASSEMBLY	31E00006
FRONT CORNER COVER	2ALM125A00143
FRONT CORNER INSIDE	2ALM125A00144
STAKE POCKET - SQUARE	2ALM187A00216
STAKE POCKET - 45 DEGREE SQUARE	2ALM187A00217
STAKE POCKET - REAR 3 1/2"	2ALM187A00254
STAKE POCKET - REAR 45 DEGREE 3 1/2"	2ALM187A00257
EXTRUDED STAKE POCKET – SQUARE	AL59020
EXTRUDED STAKE POCKET – 45 DEGREE TAPERED	AL59030
6" RS WING BRACKET - 84"	2ALM187A00265
6" CS WING BRACKET - 84"	2ALM187A00266
6" RS WING BRACKET - 97 1/4"	2ALM187A00213
6" CS WING BRACKET - 97 1/4"	2ALM187A00214
6" RS WING BRACKET - 101 1/4"	2ALM187A00267
6" CS WING BRACKET - 101 1/4"	2ALM187A00268
15" RS WING BRACKET - 84"	2ALM187A00242
15" CS WING BRACKET - 84"	2ALM187A00243
15" RS WING BRACKET - 97 1/4"	2ALM187A00218
15" CS WING BRACKET - 97 1/4"	2ALM187A00220
15" RS WING BRACKET - 101 1/4"	2ALM187A00219
15" CS WING BRACKET - 101 1/4"	2ALM187A00221

## BUMPERS/HITCHES

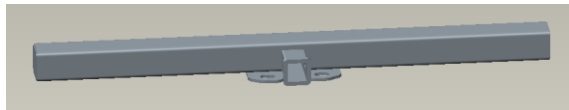
---



SA00565  
ICC BUMPER WITH RECEIVER



SA00650  
ICC BUMPER WITH PINTLE & RECEIVER



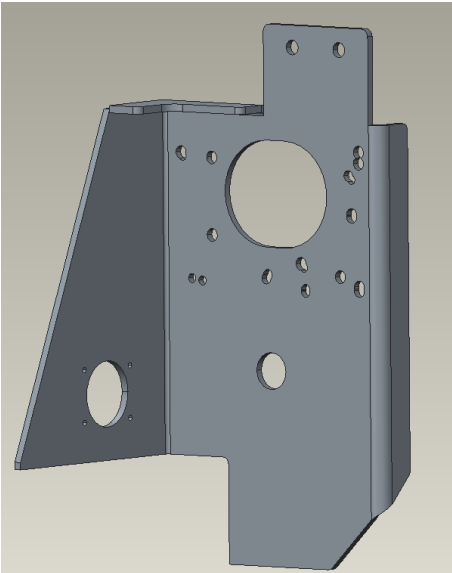
SA00570  
TUBE BUMPER WITH RECEIVER



SA00652  
LH BUMPER BRACKET

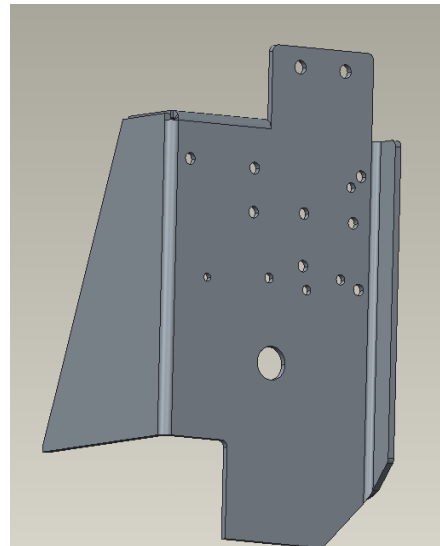


SA00651  
RH BUMPER BRACKET



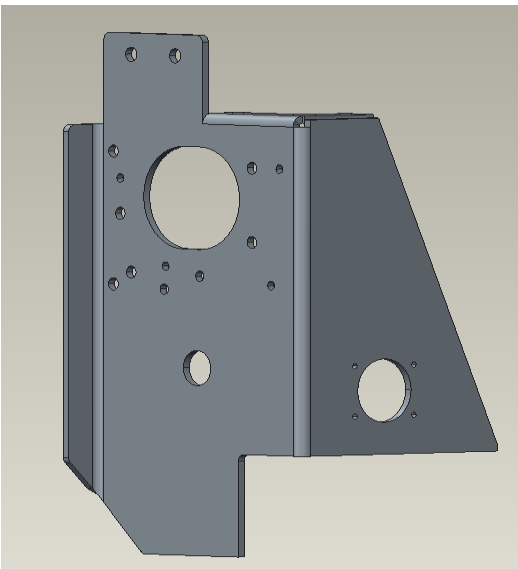
SA00805

ROAD SIDE ISUZU BUMPER BRACKET



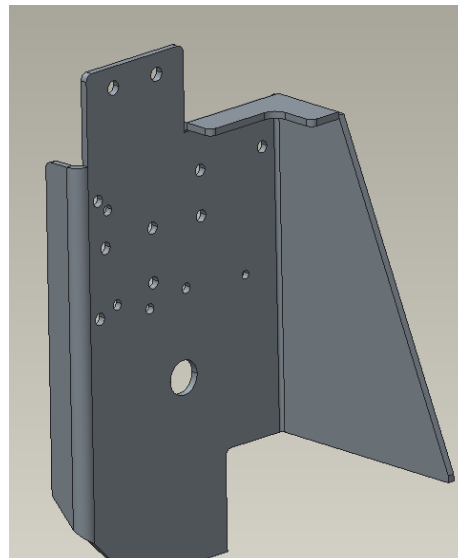
SA00806

CURB SIDE ISUZU BUMPER BRACKET



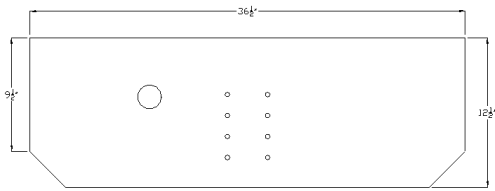
SA00805

ROAD SIDE ISUZU BUMPER BRACKET

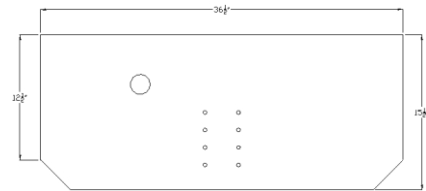


SA00806

CURB SIDE ISUZU BUMPER BRACKET



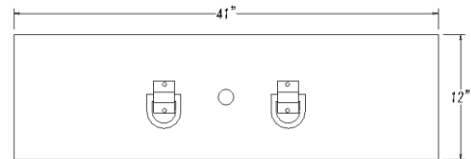
**SA00129**  
**12.5" PINTLE PLATE**



**SA00128**  
**15.5" PINTLE PLATE**



**SA00070**  
**RECESSED GOOSENECK ASSEMBLY**  
**BALL NOT INCLUDED**

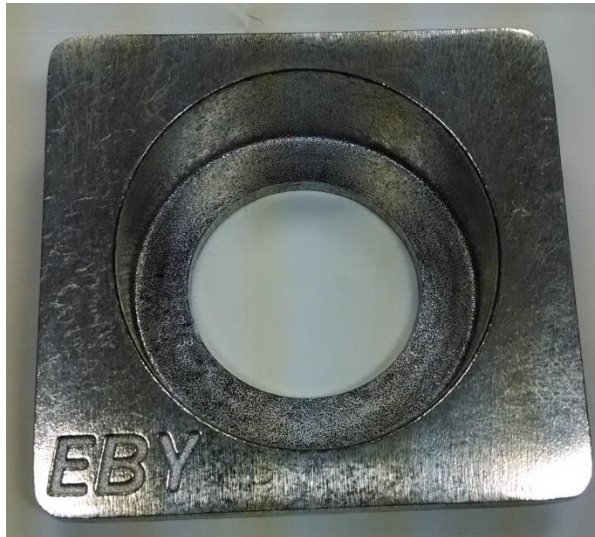


**31C00001A**  
**5/8 X 12 X 41 STEEL PLATE**  
**2 5/16" BALL INCLUDED**

<b>BUMPERS/HITCHES</b>		
<b>BUMPERS</b>		
34" FRAME ICC BUMPER WITH 2.5" RECEIVER	BLACK POWDER COAT	SA00565
34" FRAME ICC W/ PINTEL PLATE +2 ½" RECEIVER	BLACK POWDER COAT	SA00650
TUBE BUMPER WITH 2.5" RECEIVER	GRAY PRIMER	SA00570
LEFT HAND BUMPER BRACKET WITH HOLE FOR RV PLUG	GRAY PRIMER	SA00571
RIGHT HAND BUMPER BRACKET	GRAY PRIMER	SA00572
LEFT HAND BUMPER BRACKET	GRAY PRIMER	SA00652
RIGHT HAND BUMPER BRACKET	GRAY PRIMER	SA00651
ROAD SIDE ISUZU BUMPER BRACKET		SA00805
CURB SIDE ISUZU BUMPER BRACKET		SA00806
<b>HITCHES</b>		
12 ½" PINTEL PLATE ONLY		SA00129
15 ½" PINTEL PLATE ONLY		SA00128
2 5/16" BALL W/ 1 ½" SHANK		CO31100
RECESSED BALL ASSEMBLY FOR A 34" FRAME - DOES NOT INCLUDE BALL		SA00070
5/8" X 12" X 41" STEEL PLATE – COMPLETE W/ BALL AND MOUNTING ANGLES		31C00001A



## CASTINGS



AL63100  
STANDARD



AL63110  
DEEP



AL63000



AL63010

<b>CASTINGS</b>	
FUEL FILL WITH EBY LOGO	AL63100
FUEL FILL PLAIN	AL63105
FUEL FILL WITH EBY LOGO - DEEP	AL63110
RS 45 DEGREE REAR CORNER	AL63000
CS 45 DEGREE REAR CORNER	AL63010

## ELECTRICAL



EL12010  
2 CONDUCTOR WIRE



NSEL200195  
LIGHTED ROCKER SWITCH



NSMI1004050  
TAIL LIGHT CONVERTER



EL14065  
2/0 RED BLACK BATTERY CABLE



EL12140  
BACK UP



EL24400  
200A CIRCUIT BREAKER



2ALM187A00651  
BRKR MTG BRKT



EL54710



EL54741



EL54732



EL54752



EL54780



EL54785



EL54790



EL54795

USE TABLE ON FOLLOWING PAGE TO DETERMINE WHERE HARNESSES BELONG



EL57100  
HARNESS 2015 GM CHASSIS ADAPTOR



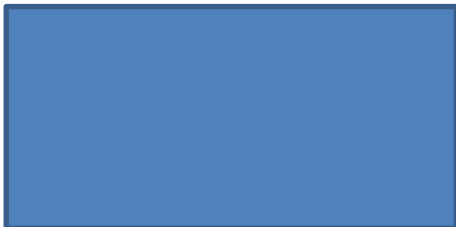
EL57110  
HARNESS 2011+ FORD BOX DELETE



EL57102  
HARNESS 2016 GM CHASSIS ADAPTOR



EL57120  
HARNESS RAM CHASSIS ADAPTOR



EL54735  
FORD HARNESS PLUG ADAPTOR  
BLUNT END

ELECTRICAL			
2 CONDUCTOR WIRE	EL12010		
LIGHTED ROCKER SWITCH (Summit Racing)	NSEL200195		
TAIL LIGHT CONVERTER	NSMI1004050		
200 AMP CIRCUIT BREAKER	EL24400		
2/0 RED BLACK BATTERY CABLE	EL14065		
BACK UP ALARM	EL12140		
FLAT BED BODY			
RV PLUG HARNESS (USE WITH 2 EL31100)	EL54710		
FRONT CLEARANCE HARNESS	EL54741		
BACK END HARNESS	EL54732	COLOR	CODE
		BROWN	MARKER
		GREEN	RIGHT TURN
		YELLOW	LEFT TURN
		WHITE	GROUND
		BLACK	BACK UP
BULKHEAD HARNESS	EL54752	COLOR	CODE
		BROWN	MARKER
		GREEN	RIGHT TURN
		YELLOW	LEFT TURN
		WHITE	GROUND
		ORANGE	CARGO LIGHT
STAKE RACK BODY			
MAIN BODY HARNESS	EL54780		
BULKHEAD HARNESS	EL54785		
GENERAL PURPOSE DUMP BODY			
MAIN BODY HARNESS	EL54790		
BULKHEAD HARNESS	EL54795		
200 AMP BREAKER MOUNTING BRACKET	2ALM187A00651		
TAIL LIGHT HARNESS ADAPTORS			
HARNESS 2011+ FORD BOX DELETE	EL57110		
HARNESS RAM CHASSIS ADAPTOR	EL57120		
FORD HARNESS PLUG ADAPTOR BLUNT END	EL54735		
HARNESS 2016 GM CHASSIS ADAPTOR	EL57102		
HARNESS 2015 GM CHASSIS ADAPTOR	EL57100		



## FRAME COVERS



31Z00031

STANDARD FRAME COVER - COMPLETE



2ALM125A00138

FRAME COVER ONLY



2ALM125A00150

FRAME COVER W/ BACK UP



LI23548



LI23546



LI14460



LI14470



FA16700

LICENSE PLATE BOLT



FA21200/FA21210

S.S. POP RIVET

<b>FRAME COVERS</b>	
<b>STANDARD FRAME COVER</b>	<b>31Z00031</b>
FLATBED FRAME COVER	2ALM125A00138
BOLT LICENSE PLATE	FA16700
RIVET POP LONG S/S 3/16	FA21210
LIGHT LICENSE PLATE CLR LED	LI23546
BRKT LICN PLT LIGHT BLACK	LI23548
<b>FRAME COVER WITH BACK UP LIGHTS</b>	<b>31Z00030</b>
FLATBED FRAME COVER WITH BACK UP LIGHTS	2ALM125A00150
BOLT LICENSE PLATE	FA16700
RIVET POP SHORT S/S 3/16	FA21200
RIVET POP LONG S/S 3/16	FA21210
BACKUP LIGHT 10 DIODE WITH FLANGE	LI14460
BEZEL FLANGE MOUNT 423 OVAL	LI14470
LT LICN PLT CLR LED	LI23546
BRKT LICN PLT LIGHT BLACK	LI23548



## LIGHTS



LI10176



LI10177



LI14450



LI14460



LI14470



LI14480



LI23546



LI23548



LI29710

LIGHTS	
MODEL 30 2" RED LED LIGHT	LI10176
MODEL 30 2" AMBER LED LIGHT	LI10177
10 DIO. LED RED OBLONG S/T/T LIGHT	LI14450
10 DIO. LED OBLONG BACK-UP LIGHT WITH FLANGE	LI14460
SS OBLONG BEZEL	LI14470
QUADRA LIGHT	LI14480
LICENSE PLATE LIGHT	LI23546
LICENSE PLATE LIGHT HOUSING	LI23548
WELDON LOAD LIGHT FOR HEADER	LI29710
2" SS BEZEL	LI65300



LI65300

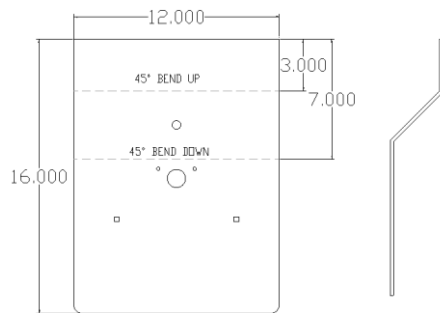
## MISCELLANEOUS



WO14052  
OAK FILLER



31Z00007  
FOLD OUT STEP



2ALM187A00354  
LICENSE PLATE BRACKET



LI14490  
2 X 3.5 REFLECTOR DECAL

<b>MISCELLANEOUS</b>	
3 1/2" X 10' OAK FILLER	WO14052
SS FOLD OUT STEP	31Z00007
DUMP BODY LICENSE PLATE BRACKET	2ALM187A00354
2" X 3 1/2" ADHESIVE RED REFLECTOR	LI14490
1" X 4 1/2" ADHESIVE RED REFLECTOR	LI27100



LI27100  
1 X 4.5 REFLECTOR

## MUDFLAPS/WEIGHTS



SA00173  
STEEL MUD FLAP BRACKET KIT  
FOR DUMP BODY



2ALM125A00142  
22" ALUM MUDFLAP BRACKET



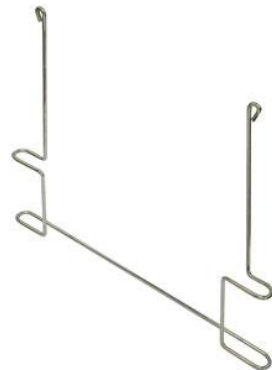
2ALM187A00278  
22" ALUM MUDFLAP FLAT



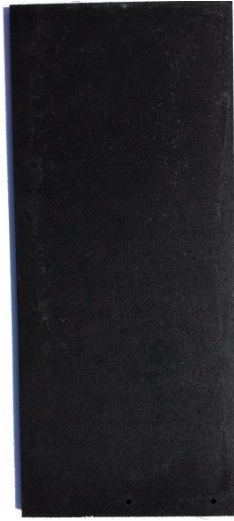
2ALM125A00155  
14" ALUM MUDFLAP BRACKET



2ALM187A00277  
14" ALUM MUDFLAP FLAT



HW23400  
ANTI-SAIL MUDFLAP BRACKET



2RUM750A00003  
SINGLE WHEEL MUDFLAP



MF10065  
DUAL WHEEL MUDFLAP



MF10140  
BLACK WITH LOGO



MF10000/MF10010  
WHITE WITH LOGO



MF10005  
WHITE WITHOUT LOGO



2SSP050A00043  
14" SS WEIGHT



2SSP050A00042  
14" WEIGHT WITH LOGO



2SSP050A00098  
22" WEIGHT



2SSP050A00063  
22" WEIGHT WITH LOGO

<b>MUDFLAPS / WEIGHTS</b>	
<b>BRACKETS</b>	
STEEL MUD FLAP BRACKETS (FOR DUMP) (SET OF 2)	SA00173
22" MUDFLAP BRACKET	2ALM125A00142
22" MUDFLAP FLAT	2ALM187A00278
14" MUDFLAP BRACKET	2ALM125A00155
14" MUDFLAP FLAT	2ALM187A00277
ANTI-SAIL MUDFLAP BRACKET	HW23400
<b>MUDFLAPS</b>	
3/4" X 14" X 30" MUDFLAP (SINGLE WHEEL)	2RUM750A00003
3/4" X 22" X 30" MUDFLAP (DUAL WHEEL)	MF10065
24" X 36" WHITE W/ EBY LOGO	MF10000
24" X 36" WHITE W/OUT EBY LOGO	MF10005
24" X 36" WHITE W/ EBY LOGO (HEAVY)	MF10010
1/2" X 24" X 36" RUBBER MUDFLAP W/ EBY LOGO	MF10140
<b>WEIGHTS</b>	
14" SS MUDFLAP WEIGHT	2SSP050A00043
14" SS MUDFLAP WEIGHT W/EBY LOGO	2SSP050A00042
22" SS MUDFLAP WEIGHT	2SSP050A00098
22" SS MUDFLAP WEIGHT W/EBY LOGO	2SSP050A00063

## SIDE KITS

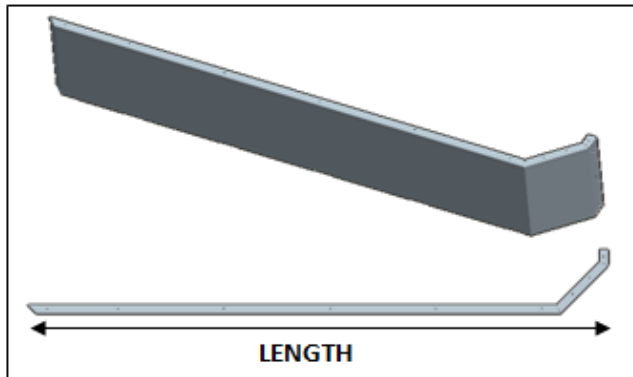
SIDE KITS							
ALL KITS COME WITH A SLIDE OUT TAILGATE STANDARD							
BODY SIZE	TAILGATE STYLE	KIT NUMBER	TAILGATE	SIDE KIT		15" WING BRACKET	
				RS	CS	RS	CS
7' x 84"							
6" SIDE	SLIDE OUT	31B00110	31B00047	31B00048	31B00049	---	---
	HINGED	31B00112	31B00095				
15" SIDE	SLIDE OUT	31B00111	31B00062	31B00067	31B00068	2ALM187A00242	2ALM187A00243
	HINGED	31B00113	31B00081				
8' 6" X 84"							
6" SIDE	SLIDE OUT	31B00114	31B00047	31B00044	31B00045	---	---
	HINGED	31B00116	31B00095				
15" SIDE	SLIDE OUT	31B00115	31B00062	31B00065	31B00066	2ALM187A00242	2ALM187A00243
	HINGED	31B00117	31B00081				
8' 6" X 101 1/4"							
6" SIDE	SLIDE OUT	31B00118	31B00046	31B00044	31B00045	---	---
	HINGED	31B00120	31B00078				
15" SIDE	SLIDE OUT	31B00119	31B00061	31B00065	31B00066	2ALM187A00219	2ALM187A00221
	HINGED	31B00121	N/A				
9' X 97 1/4"							
6" SIDE	SLIDE OUT	31B00122	31B00041	31B00039	31B00040	---	---
	HINGED	31B00124	31B00077				
15" SIDE	SLIDE OUT	31B00123	31B00060	31B00063	31B00064	2ALM187A00218	2ALM187A00220
	HINGED	31B00125	31B00076				
11' X 97 1/4"							
6" SIDE (2 PIECES)	SLIDE OUT	31B00126	31B00041	31B00079 31B00051	31B00080 31B00053	---	---
	HINGED	31B00128	31B00077				
15" SIDE (2 PIECES)	SLIDE OUT	31B00127	31B00060	31B00071 31B00069	31B00072 31B00070	2ALM187A00218	2ALM187A00220
	HINGED	31B00129	31B00076				



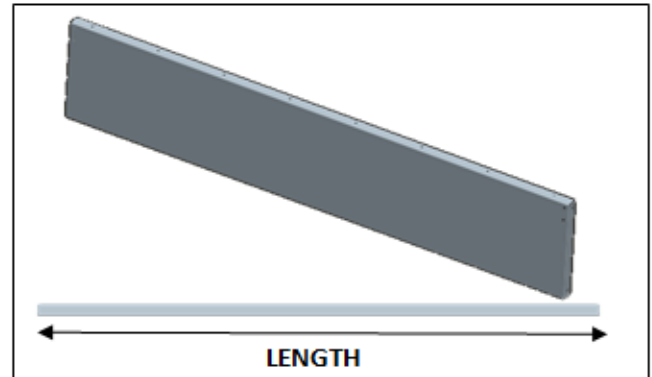
Side P/N: (CS, RS)	Length:	Part For:
31B00066, 31B00065	92 1/2"	8'6" long flatbed with 15" high side kit
31B00045, 31B00044	92 1/2"	8'6" long flatbed with 6" high side kit
31B00064, 31B00063	98 1/2"	9' long flatbed with 15" high side kit
31B00040, 31B00039	98 1/2"	9' long flatbed with 6" high side kit
31B00072, 31B00071	59"	11' long flatbed with 15" high side kit, front piece
31B00070, 31B00069	63 1/8"	11' long flatbed with 15" high side kit, back piece
31B00080, 31B00079	59"	11' long flatbed with 6" high side kit, front piece
31B00053, 31B00051	63 1/8"	11' long flatbed with 6" high side kit, back piece

Tailgate P/N:	Length:	Part For:
31B00062	60 1/2"	84 1/8" wide flatbed with 15" high side kit
31B00047	60 1/2"	84 1/8" wide flatbed with 6" high side kit
31B00060	73 1/2"	97 1/4" wide flatbed with 15" high side kit
31B00041	73 1/2"	97 1/4" wide flatbed with 6" high side kit
31B00061	77 1/2"	101 1/4" wide flatbed with 15" high side kit
31B00046	77 1/2"	101 1/4" wide flatbed with 6" high side kit

**Side:**

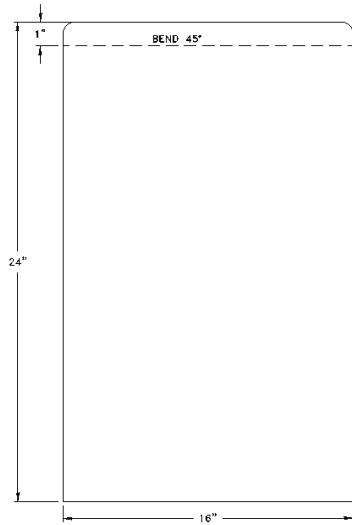


**Tailgate:**

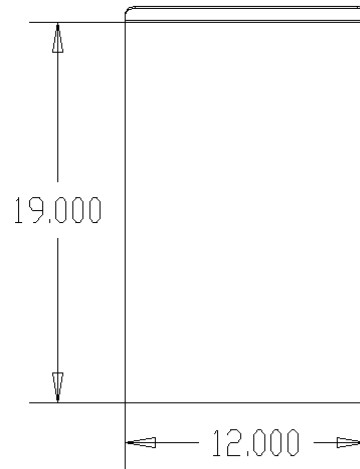




## SPLASH GUARDS



2ALM125A00028  
LARGE WELD ON SPLASH GUARD



2ALM125A00009  
SMALL WELD ON SPLASH GUARD



2ALM125A00153  
CS SINGLE WHEEL SPLASH GUARD



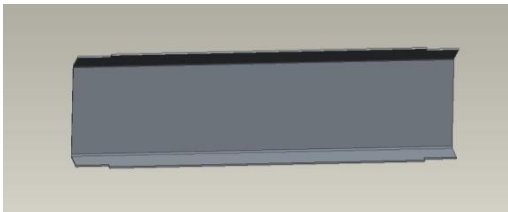
2ALM125A00154  
RS SINGLE WHEEL SPLASH GUARD



2ALM125A00146  
RS DUAL WHEEL SPLASH GUARD



2ALM125A00147  
CS DUAL WHEEL SPLASH GUARD



2ALM080A00169  
TAIL LIGHT COVER – FOR 91.625",  
94.25", 97.25", AND 101.25" WIDTHS



2ALM080A00170  
TAIL LIGHT COVER – FOR 84.125"  
WIDTH



2ALM125A00148  
BOLT ON STRUT FOR SPLASH GUARD

<b>SPLASH GUARDS</b>	
SPLASH GUARD - LARGE WELD ON (1/8" AL 12"X23")	2ALM125A00028
SPLASH GUARD - SMALL WELD ON (1/8" AL 12"X19")	2ALM125A00009
SPLASH GUARD - CS SINGLE WHEEL (1/8" AL 12"X15")	2ALM125A00153
SPLASH GUARD - RS SINGLE WHEEL (1/8" AL 12"X15")	2ALM125A00154
SPLASH GUARD - RS DUAL WHEEL (1/8" AL 12"X19")	2ALM125A00146
SPLASH GUARD - CS DUAL WHEEL (1/8" AL 12"X19")	2ALM125A00147
SPLASH GUARD - BOLT ON STRUT	2ALM125A00148
TAIL LIGHT COVER - FOR 91.625", 94.25", 97.25", AND 101.25" WIDTHS	2ALM080A00169
TAIL LIGHT COVER – FOR 84.125" WIDTH	2ALM080A00170

## SUB FRAMES



31Z00037

SUB FRAME ASSEMBLY (C-20) - COMPLETE



SA00700

FRAME ASSEMBLY ONLY



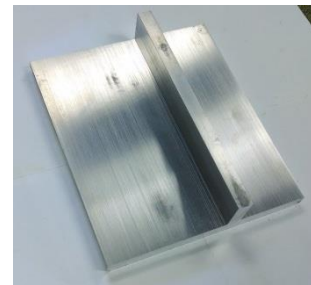
HO10012

B-10 HOISE W/OUT PUMP



HO10022

C-20 HOISE W/OUT PUMP



HO13000

ELECTRIC/HYDRAULIC PUMP

# EBY TRUCK BODY PARTS LIST | 2016



SA00710

2' SUB-FRAME EXTENSION FOR 11' MOUNTING



AL58100  
2" RUB RAIL



NSST71439  
B-10 STEEL SHAFT



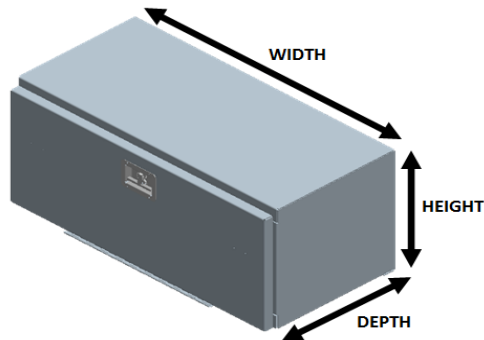
ST40720  
C-20 STEEL SHAFT



AL58120  
3" FLATBED POCKET RAIL

SUB FRAMES			
B-10 SUB-FRAME ASSEMBLY	31Z00036	C-20 SUB-FRAME ASSEMBLY	31Z00037
B-10 HOIST W/OUT PUMP	HO10012	C-20 HOIST W/OUT PUMP	HO10022
ELECTRIC/HYDRAULIC PUMP	HO13000	ELECTRIC/HYDRAULIC PUMP	HO13000
FRAME ASSEMBLY	SA00700	FRAME ASSEMBLY	SA00700
MUD FLAP BRACKETS	SA00173	MUD FLAP BRACKETS	SA00173
B-10 STEEL SHAFT FOR SUB-FRAME	NSST71439	*TUBE STL SQ 2X2X3/16X24'	*NSST71440
FLATBED FRAME ATTACHMENT	1AL58080A012000	FLATBED FRAME ATTACHMENT	1AL58080A012000
RUB RAIL 3/8 X 2 X 12'	AL58100	RUB RAIL 3/8 X 2 X 12'	AL58100
NUT LOCK 1/4" STOVER B	FA10070	NUT LOCK 1/4" STOVER B	FA10070
BOLT HEX 1/4X1-1/2" GR5	FA10280	BOLT HEX 1/4X1-1/2" GR5	FA10280
NUT HEX 3/8" PLTD	FA12000	NUT HEX 3/8" PLTD	FA12000
WASHER FLAT 3/8" PLTD	FA12100	WASHER FLAT 3/8" PLTD	FA12100
WASHER LOCK 3/8" PLTD	FA12150	WASHER LOCK 3/8" PLTD	FA12150
BOLT HEX 3/8X1-1/4" GR5	FA12230	BOLT HEX 3/8X1-1/4" GR5	FA12230
BOLT HEX 3/8X1-1/2" GR5	FA12240	BOLT HEX 3/8X1-1/2" GR5	FA12240
NUT LOCK 1/2 GR8 FLANGED	FA14090	NUT LOCK 1/2 GR8 FLANGED	FA14090
BOLT HEX 1/2X1-1/2	FA14220	BOLT HEX 1/2X1-1/2	FA14220
ELBOW STRAIGHT THREAD	HF10325	ELBOW STRAIGHT THREAD	HF10325
HOSE HYDRAULIC 4000 PSI 3/8"	HF12180	HOSE HYDRAULIC 4000 PSI 3/8"	HF12180
ADAPTER SWIVEL 3/8" HOSE-6 FMLE	HF13005	ADAPTER SWIVEL 3/8" HOSE-6 FMLE	HF13005
1/4" MP-6MJ 2" 90DEG ELBOW 2" LEG	HF13035	1/4" MP-6MJ 2" 90DEG ELBOW 2" LEG	HF13035
1/4" MP-6MJ 90DEG ELBOW	HF13040	1/4" MP-6MJ 90DEG ELBOW	HF13040
6MJ-6FJX 90DEG ELBOW	HF13045	6MJ-6FJX 90DEG ELBOW	HF13045
OPTIONAL PARTS			
2' SUB-FRAME EXTENSION (EACH)	SA00710		

## TOOL BOXES



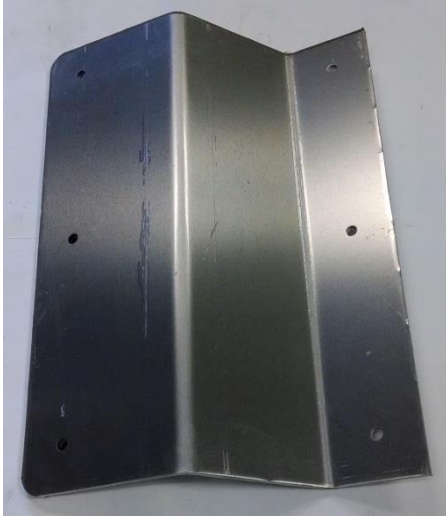
<b>TOOLBOXES</b>			
SIZE (WIDTH X DEPTH X HEIGHT)	ALUMINUM LID	SS OVERLAY	APPLICATION
18" X 12" X 16" TAPERED	33E00083A	N/A	84" X 7' SRW P-U DELETE
24" X 13" X 16" TAPERED	33E00074A	N/A	84" X 8.5' SRW P-U DELETE
24" X 16" X 16"	33E00008A	33E00025A	DRW P-U DELETE
30" X 16" X 16"	33E00011A	33E00026A	60" CA CAB CHASSIS
36" X 16" X 16"	33E00009A	33E00027A	84" CA CAB CHASSIS
48" X 16" X 16"	33E00010A	33E00028A	84" CA CAB CHASSIS
30" X 13" X 16"	33E00091A	N/A	60" SRW CAB CHASSIS



2ALM125A00139  
8.5" X 12" STRAIGHT TOOLBOX  
MOUNTING BRACKET



2ALM125A00140  
8.5" X 12" BENT TOOLBOX  
MOUNTING BRACKET



2ALM187A00281  
9.5" X 12" OFFSET TOOLBOX BRACKET



SA00194/SA00195  
TOOLBOX BRACKET

<b>TOOLBOX BRACKETS</b>	
8.5" X 12" TOOL BOX BRACKET STRAIGHT	2ALM125A00139
8.5" X 12" TOOL BOX BRACKET BENT	2ALM125A00140
9.5" X 12 TOOL BOX BRACKET BENT (3/16" for 30" BOX)	2ALM187A00281
TOOLBOX FRAME MOUNTING BRACKET RIGHT HAND	SA00194
TOOLBOX FRAME MOUNTING BRACKET LEFT HAND	SA00195