

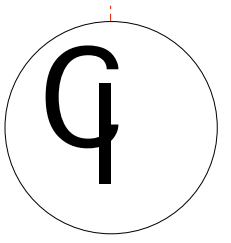
NOTE: pipes 28-32 are dead-hung at 18'-0".

NOTE: pipes 1-27 trim out at 50'-0".

NOTE: Dock Door is 10'w X 8'h, at 4' above street level, with a lift.

NOTE: The fly system is double purchase.

This is for the web page



The Columbia Theatre		For the Performing Arts	
Southeastern Louisiana University			
Stock ground plan			drawing
T. D. - Pete Pfeil	drawn - Steve Schepker		1 of 3
Date - 10.04	scale - 1/4" = 1'-0"		
revised - 05.08			



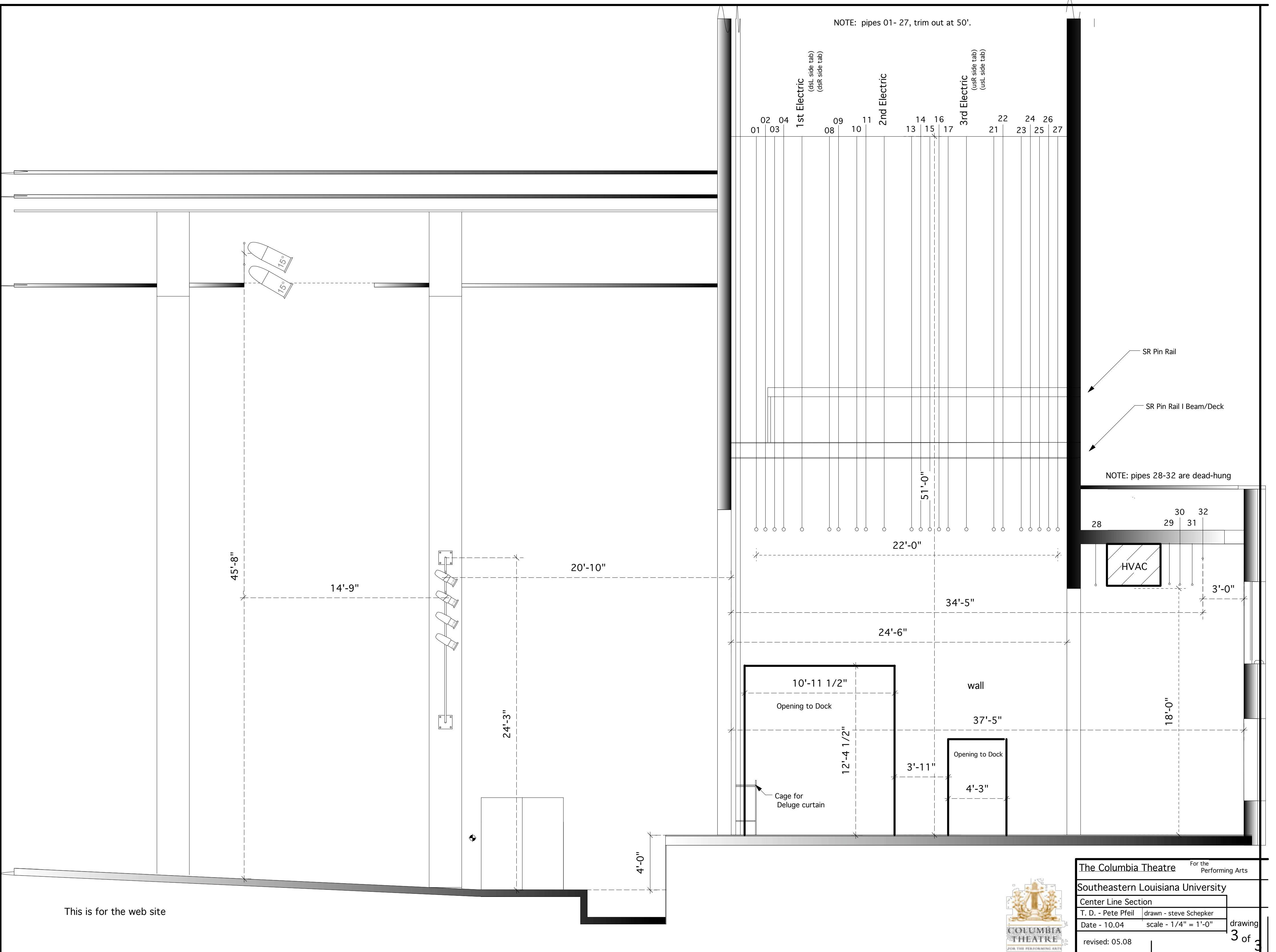
NOTE: pipes 01 - 27, trim out at 50'.

01 02 03 04 08 09 10 11 13 14 15 16 17 21 22 23 24 25 26 27

1st Electric (dsL side tab)
(dsR side tab)

2nd Electric

3rd Electric (usR side tab)
(usL side tab)



SR Pin Rail

SR Pin Rail I Beam/Deck

NOTE: pipes 28-32 are dead-hung

28 29 30 31 32

HVAC

10'-11 1/2"

Opening to Dock

12'-4 1/2"

3'-11"

4'-3"

Cage for Deluge curtain

wall

37'-5"

18'-0"

3'-0"

This is for the web site



The Columbia Theatre For the Performing Arts	
Southeastern Louisiana University	
Center Line Section	
T. D. - Pete Pfeil	drawn - steve Schepker
Date - 10.04	scale - 1/4" = 1'-0"
revised: 05.08	