



© Biotef 2021

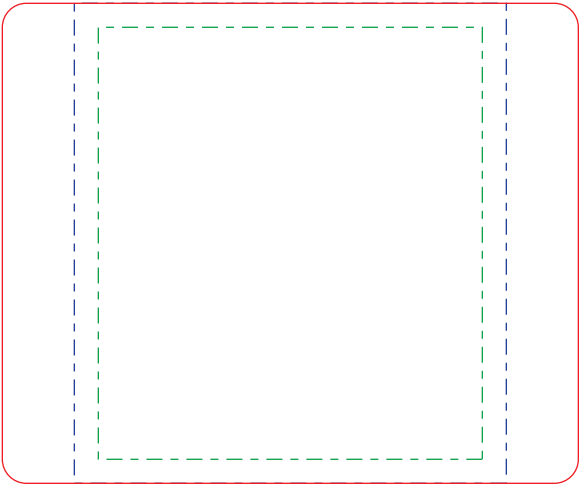
For help with these dielines or to get a custom dieline created, please contact us. Email: [info@biotef.com](mailto:info@biotef.com) Phone: (713) 999-4060

For a standard 8 oz. 2000 Series Tip-N-Measure container, the optimal booklet base label size is 2.5" x 3"

- 1. Drag and drop your artwork onto the artboard.
- 2. If your design has colors/images/shapes that are meant to go to the edge of the label, make sure they extend out 1/16" past the dieline.
- 3. Keep required elements (text, images, borders, etc.) 1/16" inside the dieline to the safeline.
- 4. Proceed to booklet.



Label Panel	2.75" x 3.375"
Base Label Dieline	2.5" x 3"
Booklet Size	2.5" x 2.25"
Base Print Area	2.25" x 2"





© Biotef 2021

For help with these dielines or to get a custom dieline created, please contact us.

Email: [info@biotef.com](mailto:info@biotef.com)

Phone: (713) 999-4060

For a standard 8 oz. 2000 Series Tip-N-Measure container, the optimal booklet size is 2.5" x 2.25"

Booklet Size	2.5" x 2.25"
Booklet Safeline	2.375" x 2.125"

1. Drag and drop your artwork onto the artboard.
2. If your design has colors/images/shapes that are meant to go to the edge of the label, make sure they extend out 1/16" past the dieline.
3. Keep required elements (text, images, borders, etc.) 1/16" inside the dieline to the safeline.
4. Convert to vector outline.
5. Export your artwork at a minimum of 300 dpi, ideally at 600 dpi.

