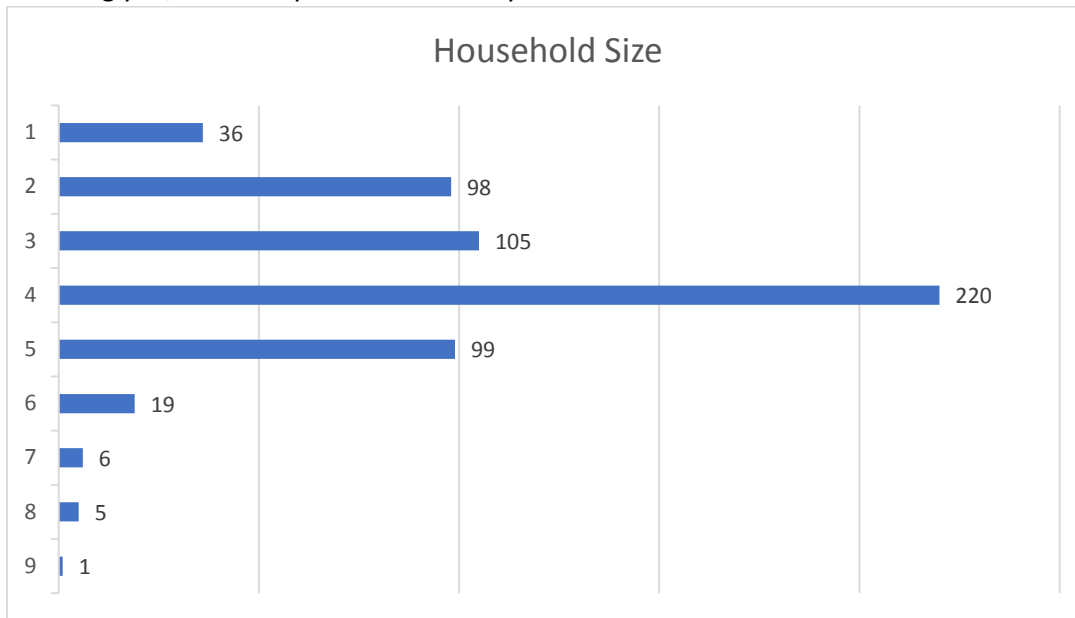


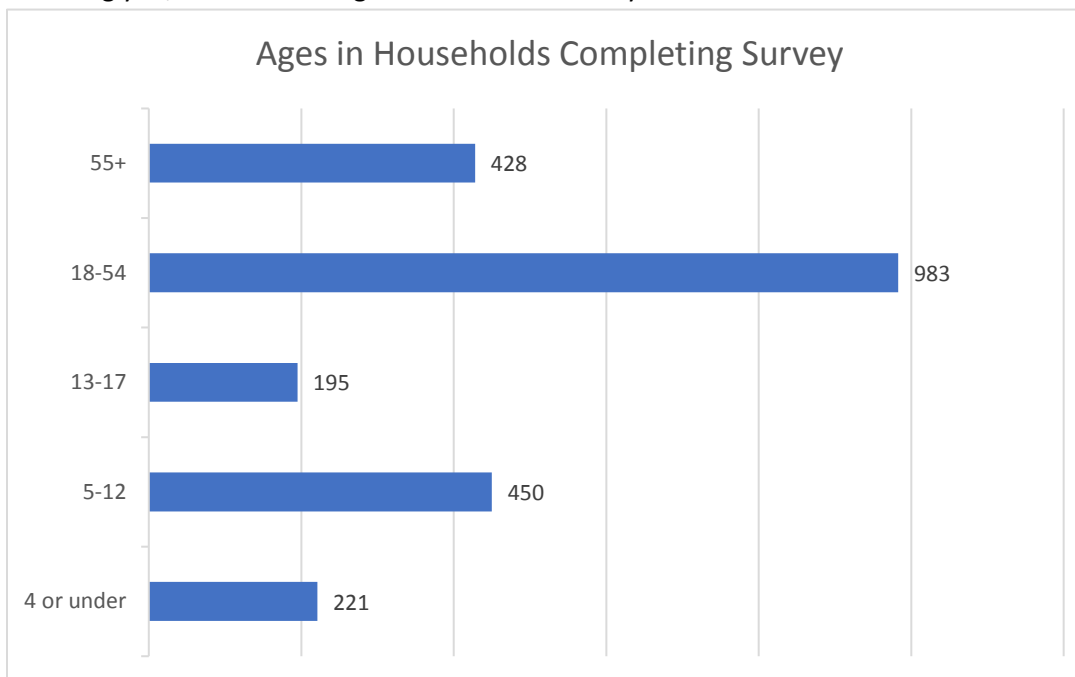


Below are results from the 2018 Strategic Plan Community Survey. The survey was available February 5 through March 16, 2018 via our website (rparks.org), Facebook, and paper copies available at Roselle Park District buildings, Village Hall, and the Roselle Public Library.

1. Including you, how many members are in your household?

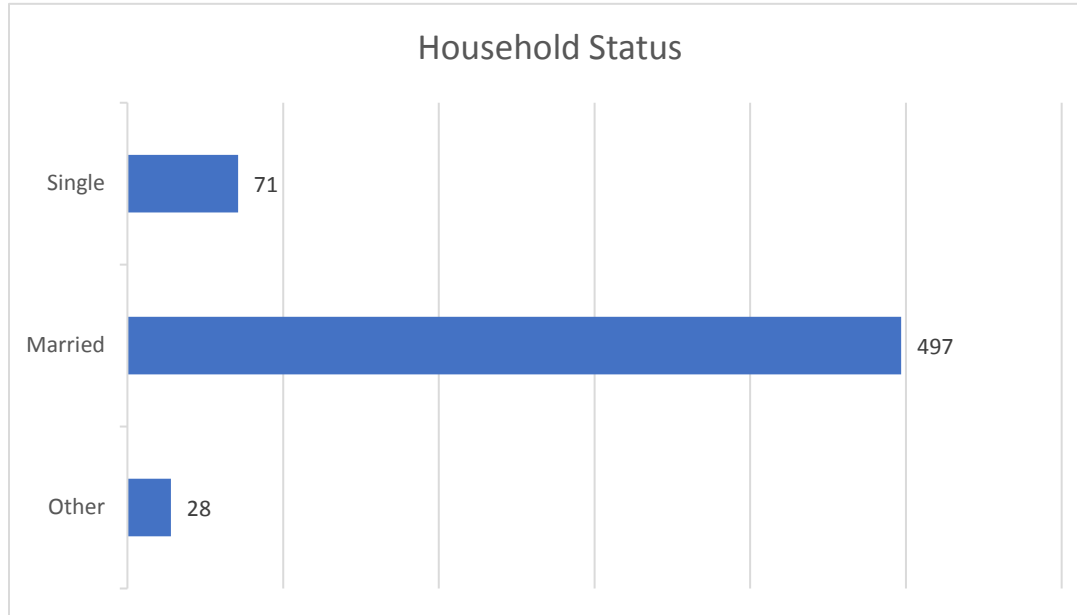


2. Including you, what are the ages of the members in your household?

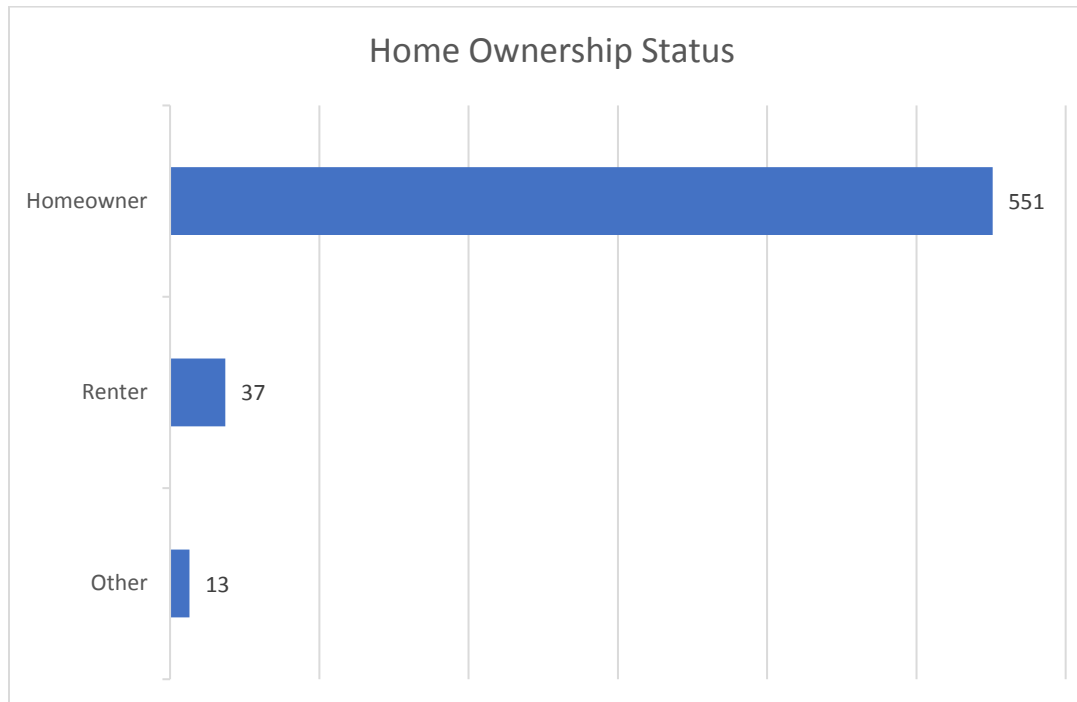




3. Household status:

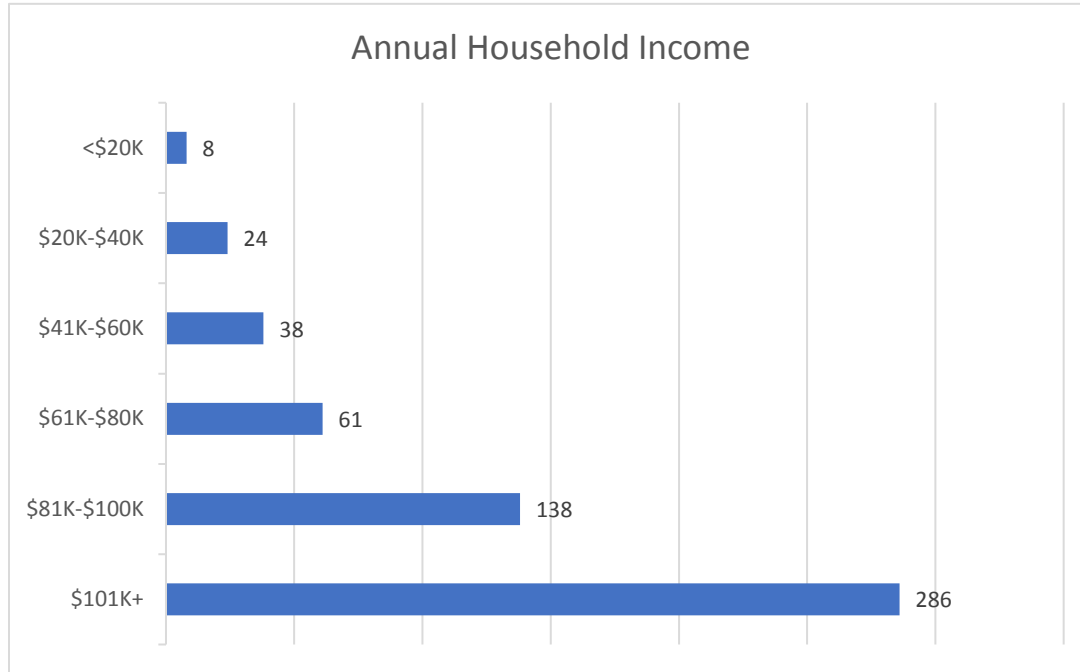


4. Ownership status:

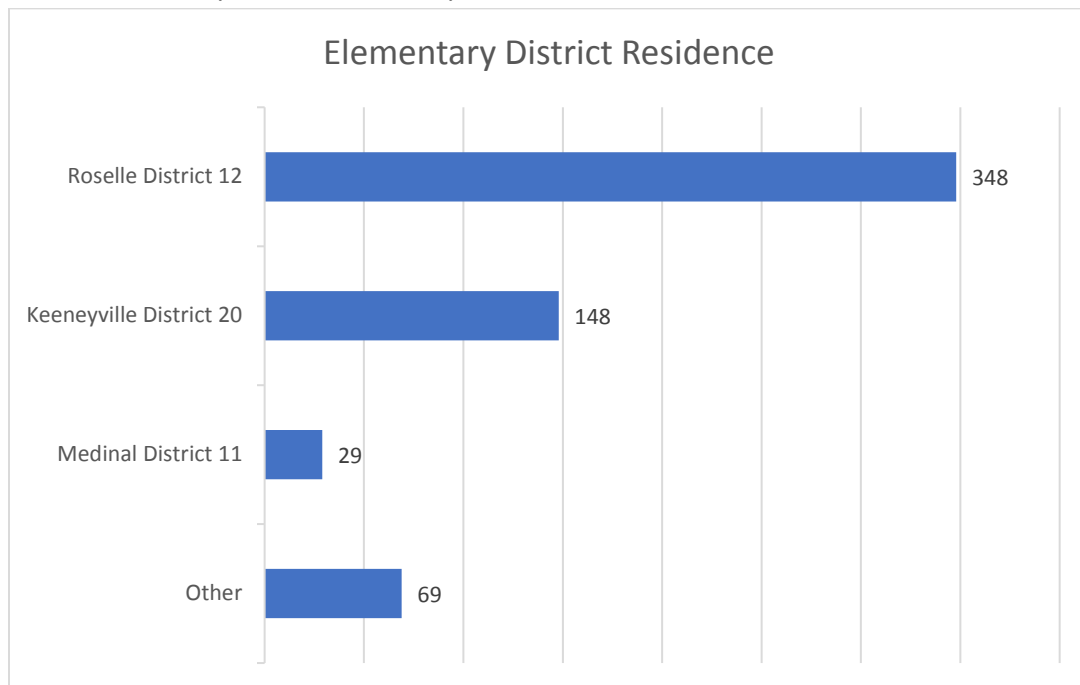




5. Annual household income:

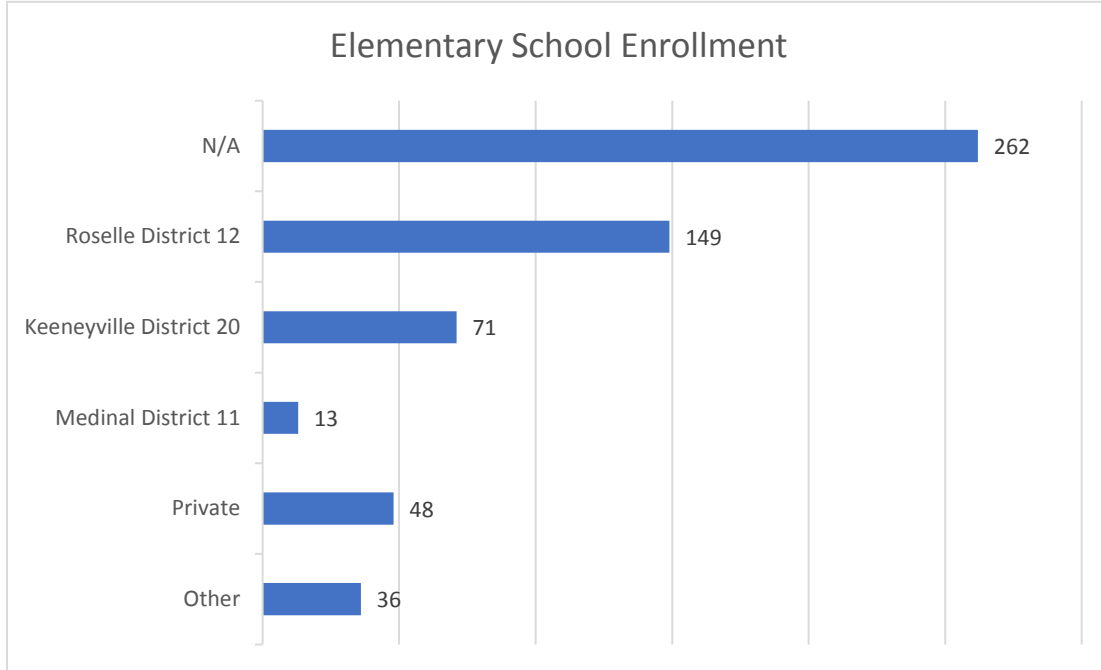


6. Which elementary school district do you reside in?

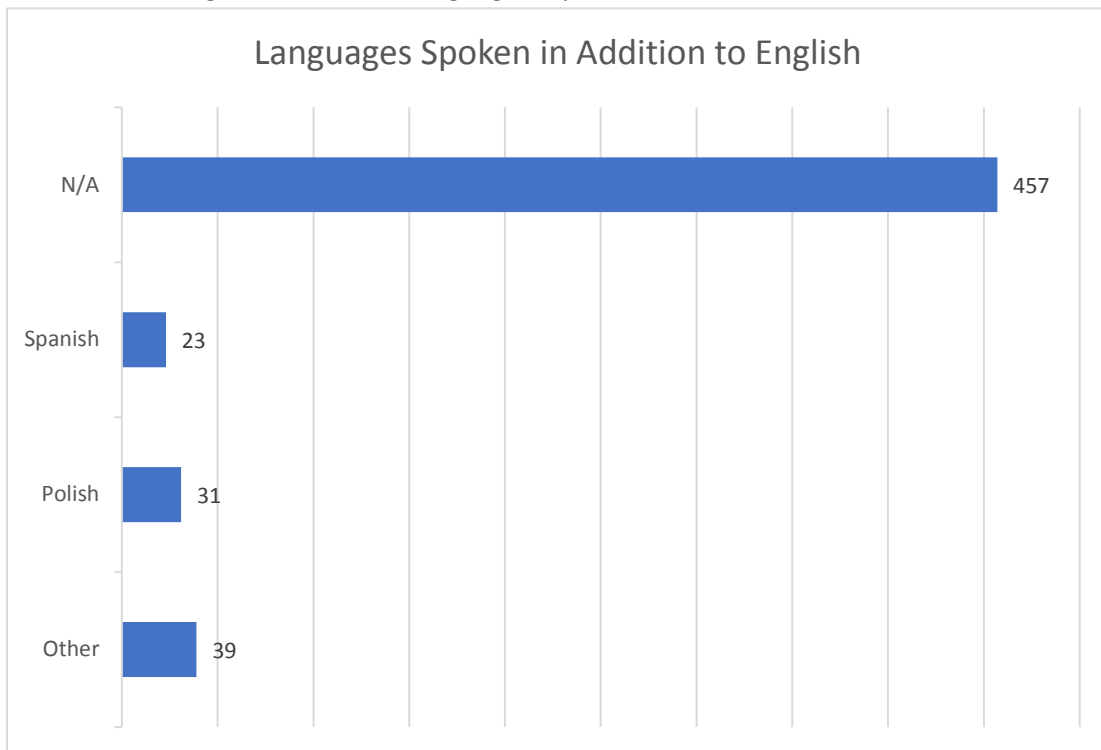




7. If any member of your household is enrolled in elementary school, which district does he/she attend?

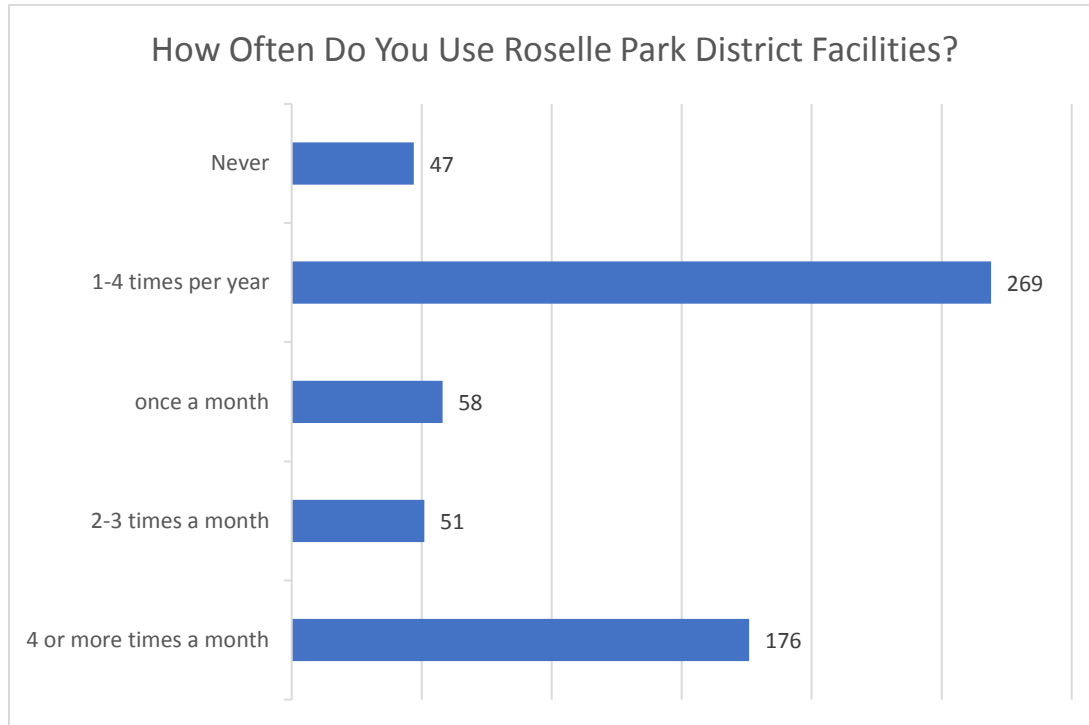


8. In addition to English, what other language is spoken at home?

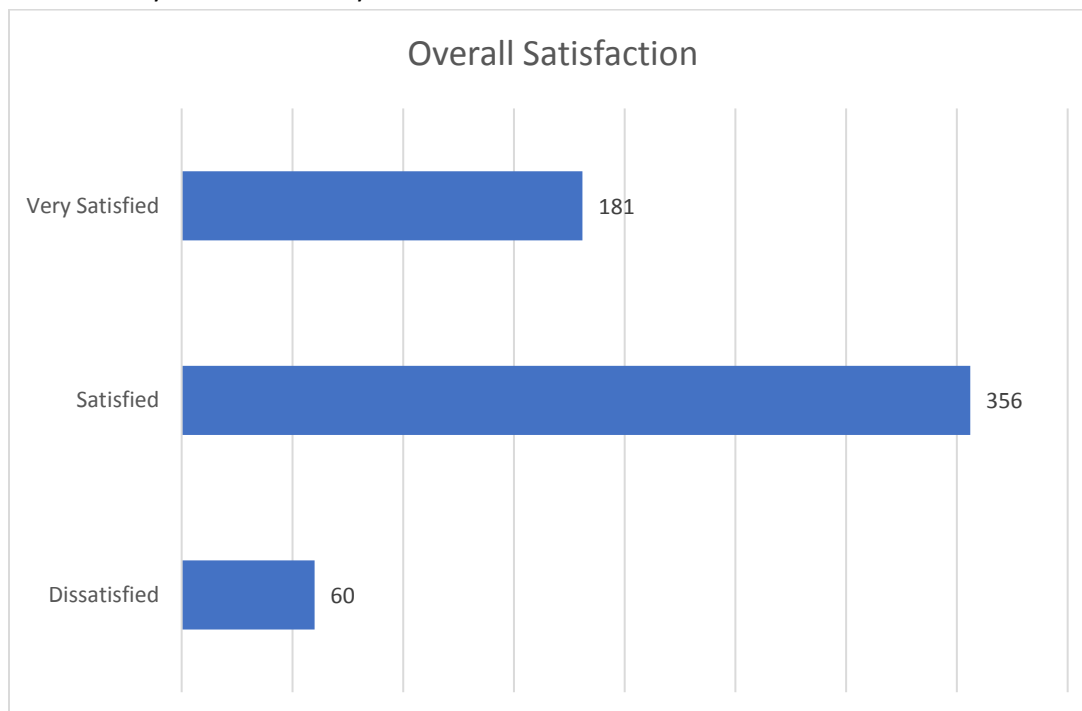




9. On average, how often do you or other members of your household participate in or attend Roselle Park District programs, activities and/or events?

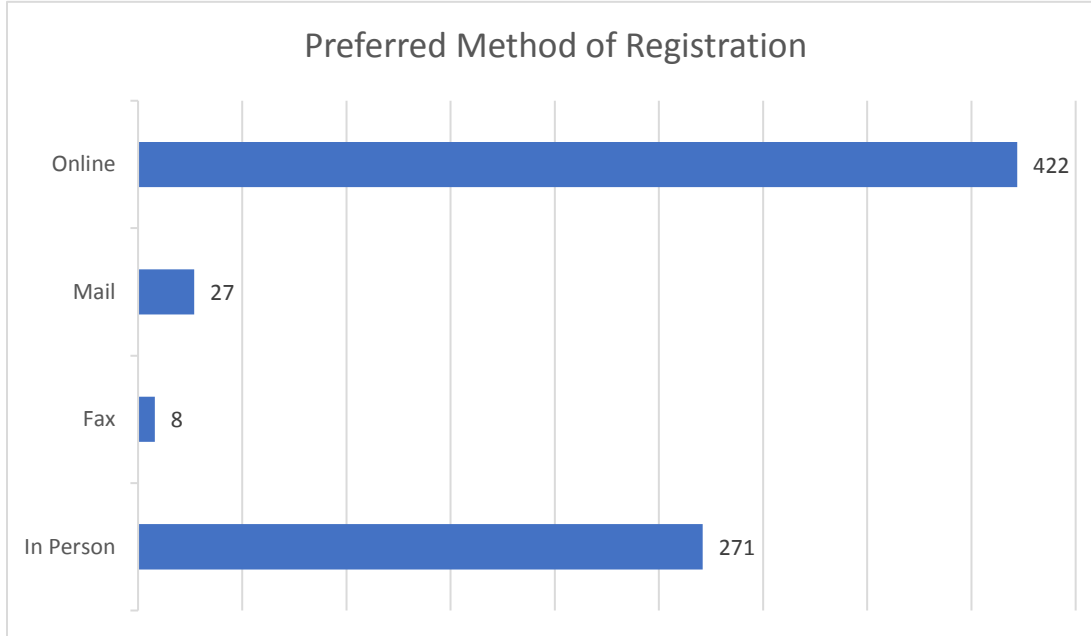


10. How would you characterize your overall satisfaction with the Roselle Park District?

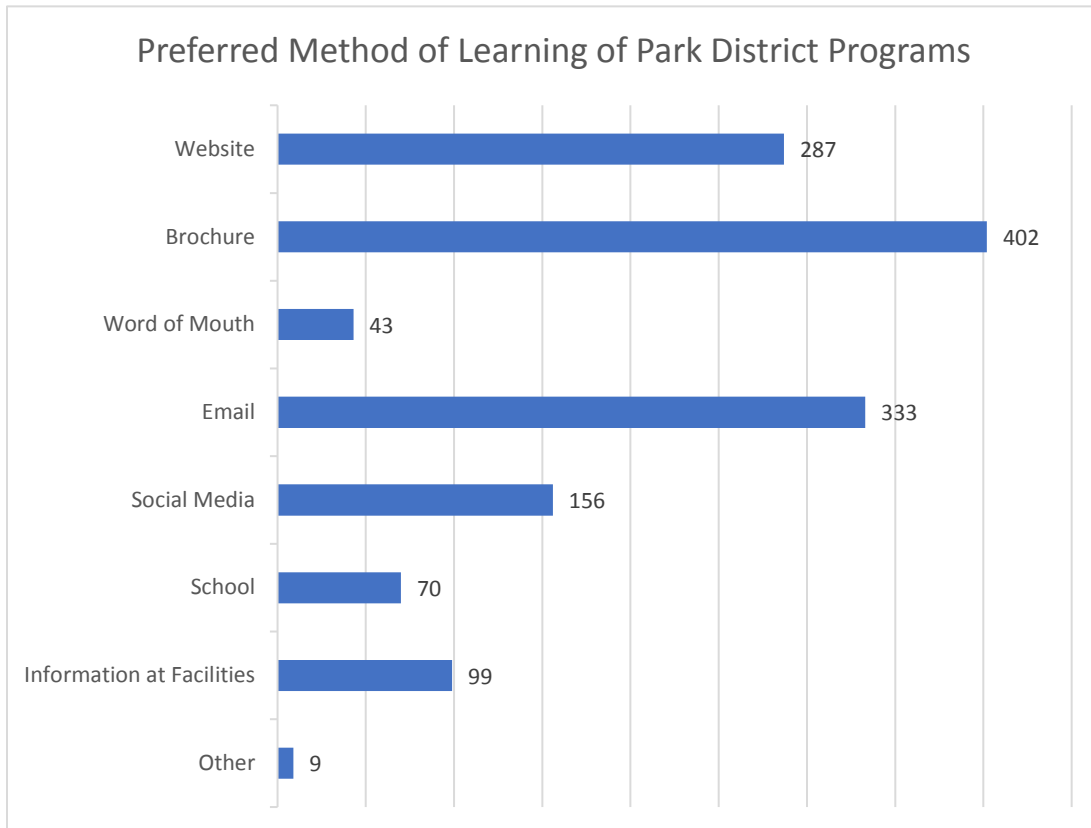




11. What is your preferred method to register for programs?

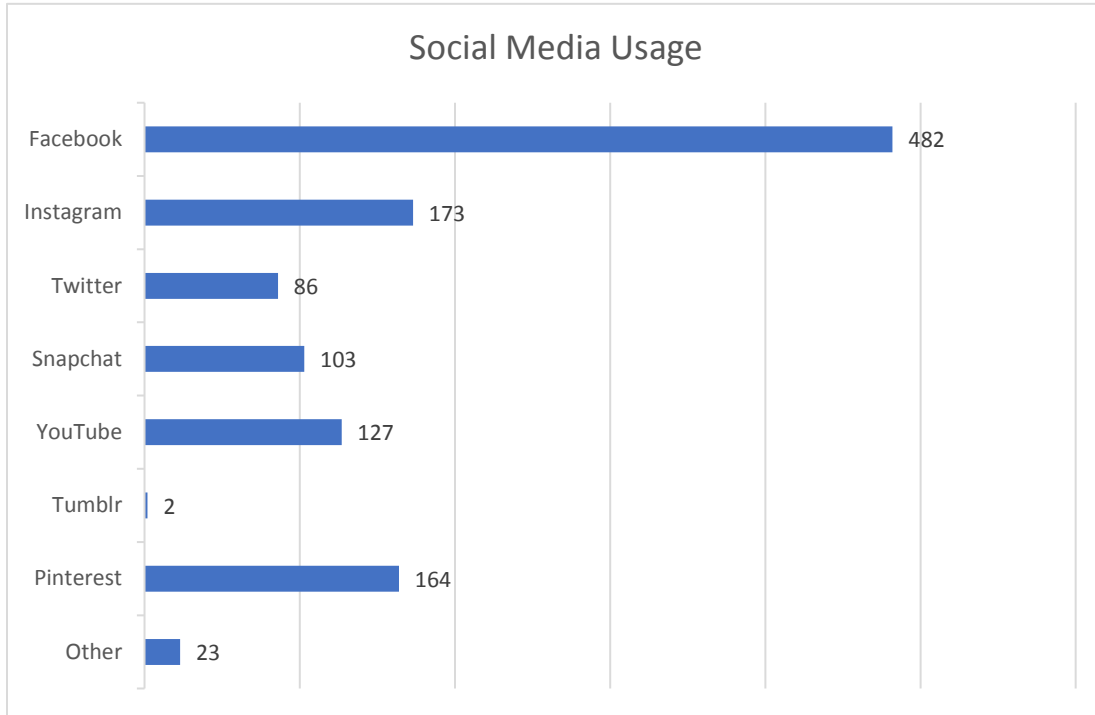


12. What is your preferred method for the Park District to inform you about its programs? (Check all that apply)

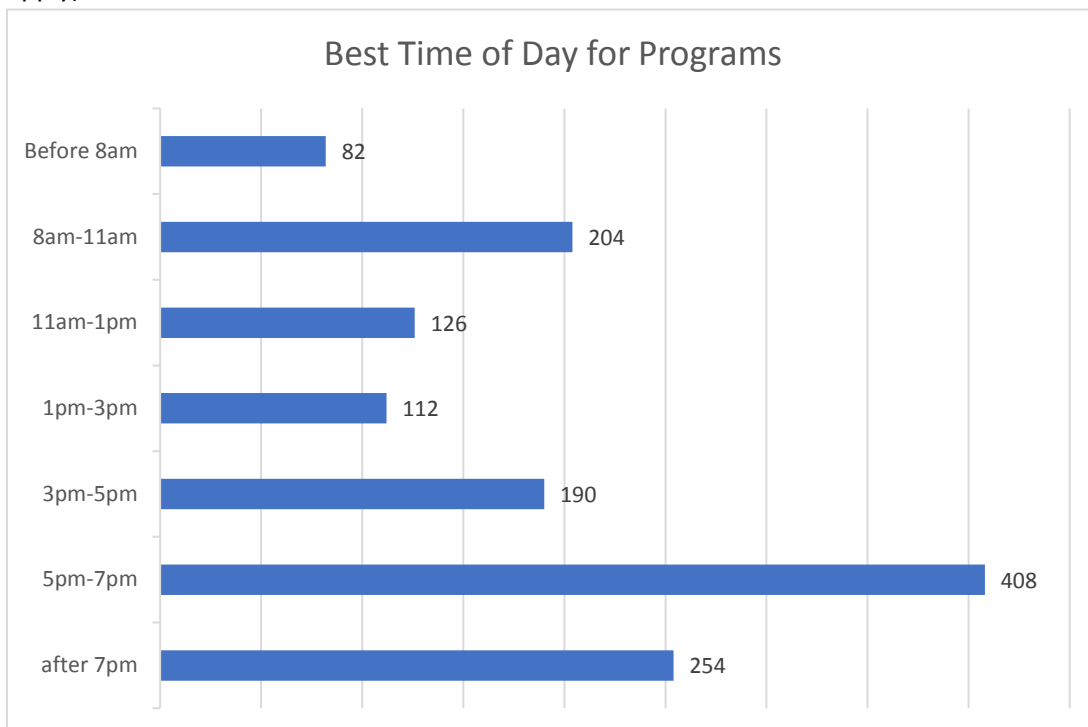




13. Which social media site do you use most frequently? (Check all that apply)

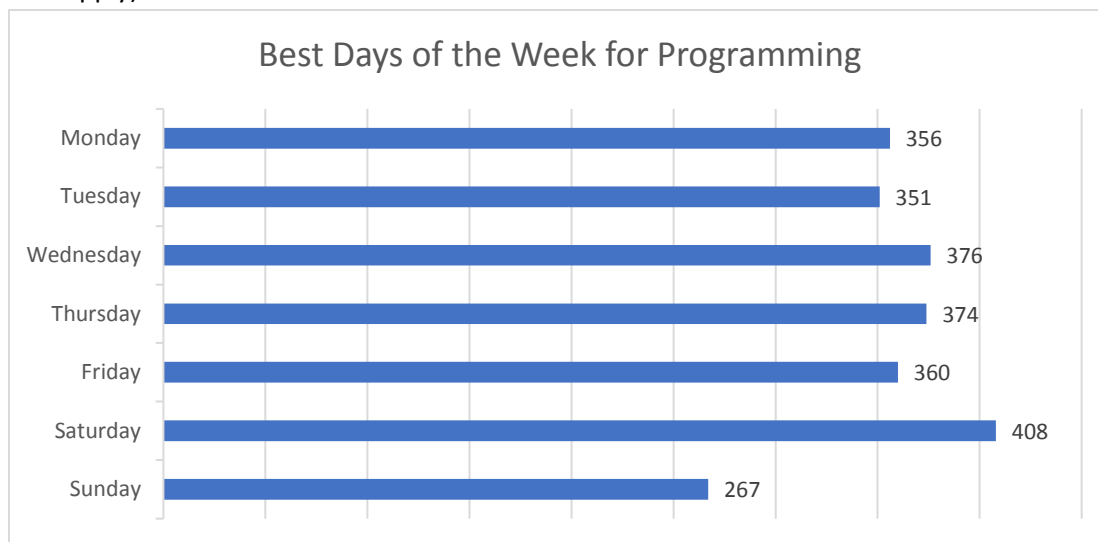


14. What is the best time of day for you and others in your household to participate in programs? (Check all that apply)

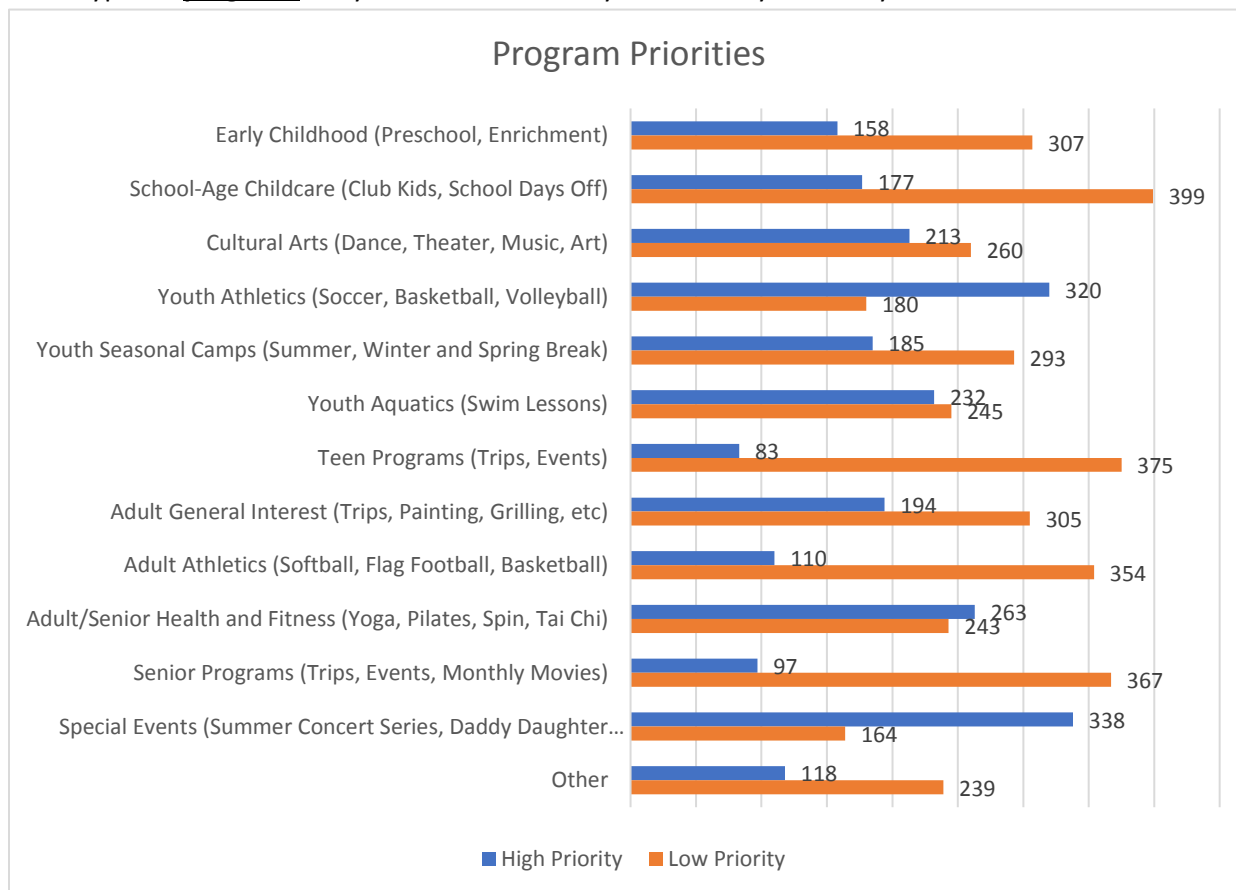




15. What is the best day of the week for you and others in your household to participate in programs? (Check all that apply)

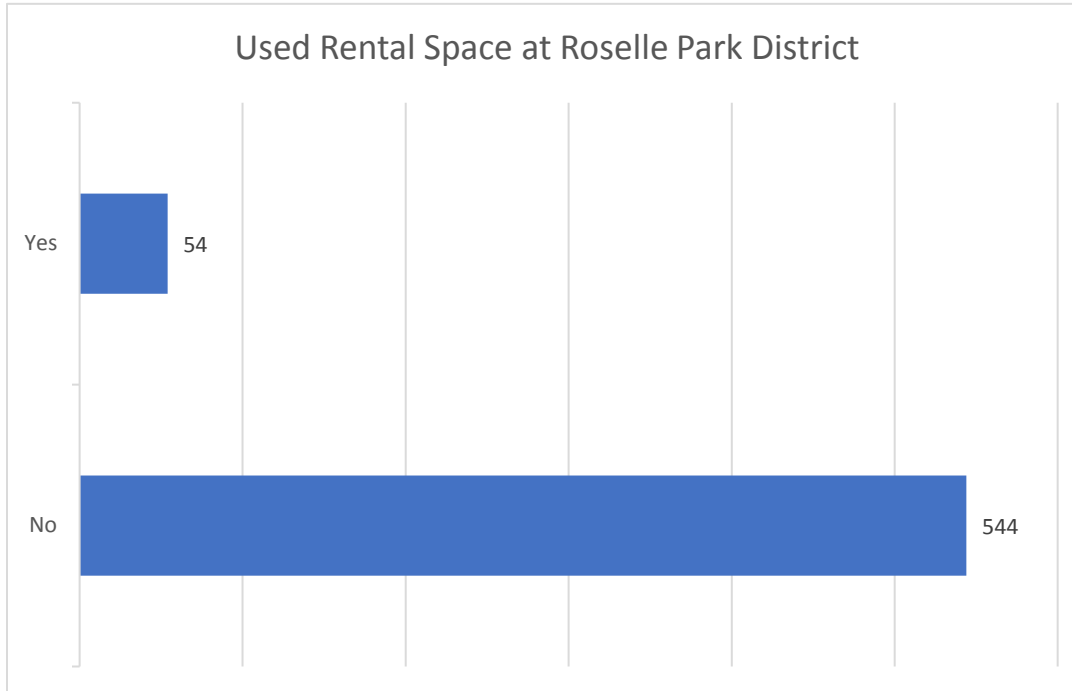


16. What types of **programs** are you interested in for yourself and your family?

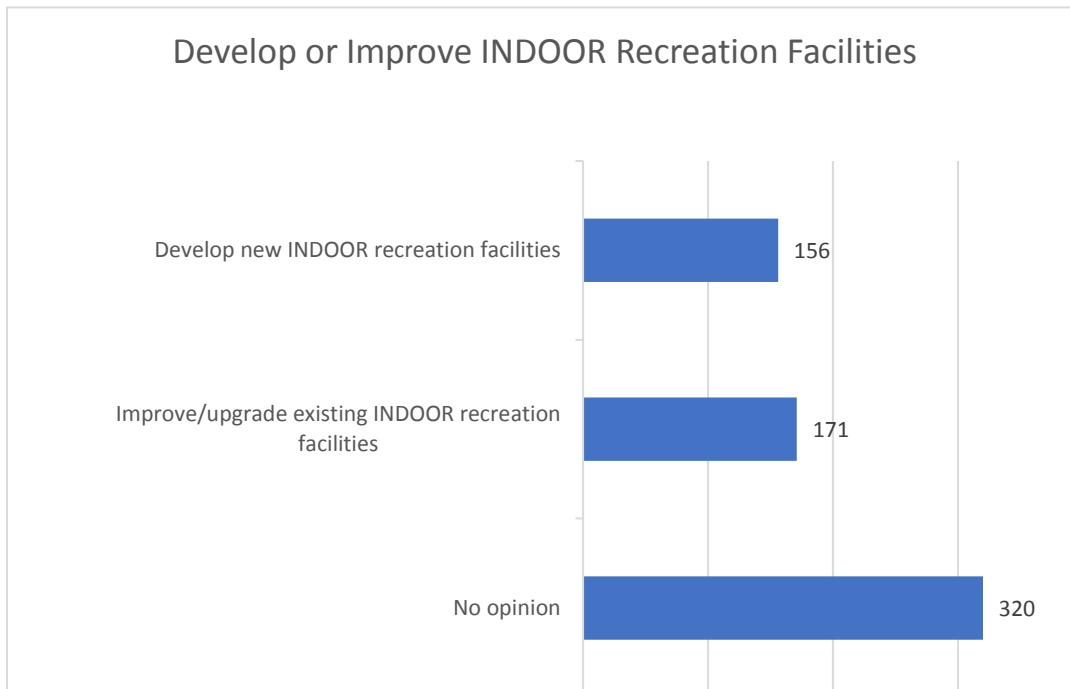




17. Have you rented an indoor or outdoor space in the past year?

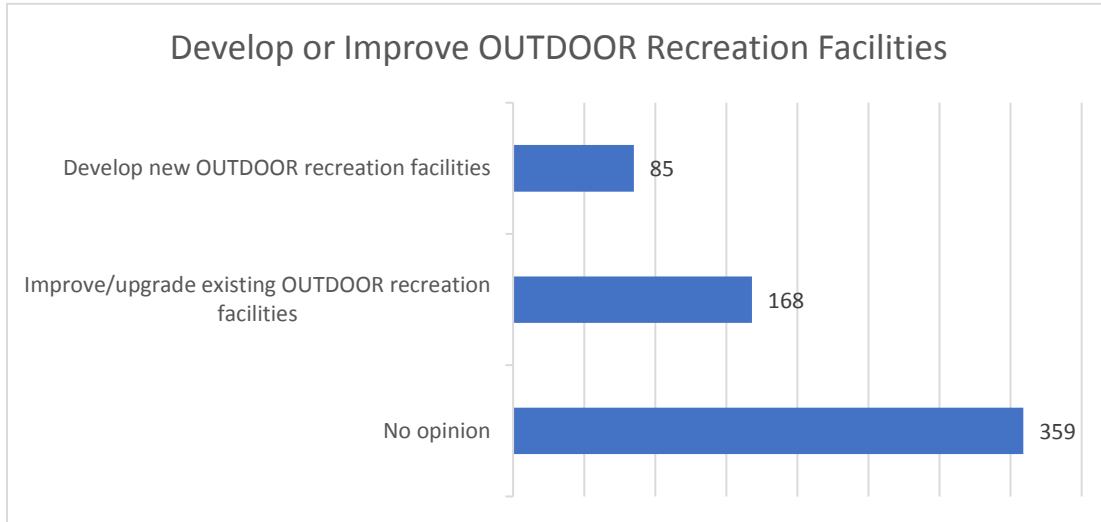


18. What would like to see developed or improved:

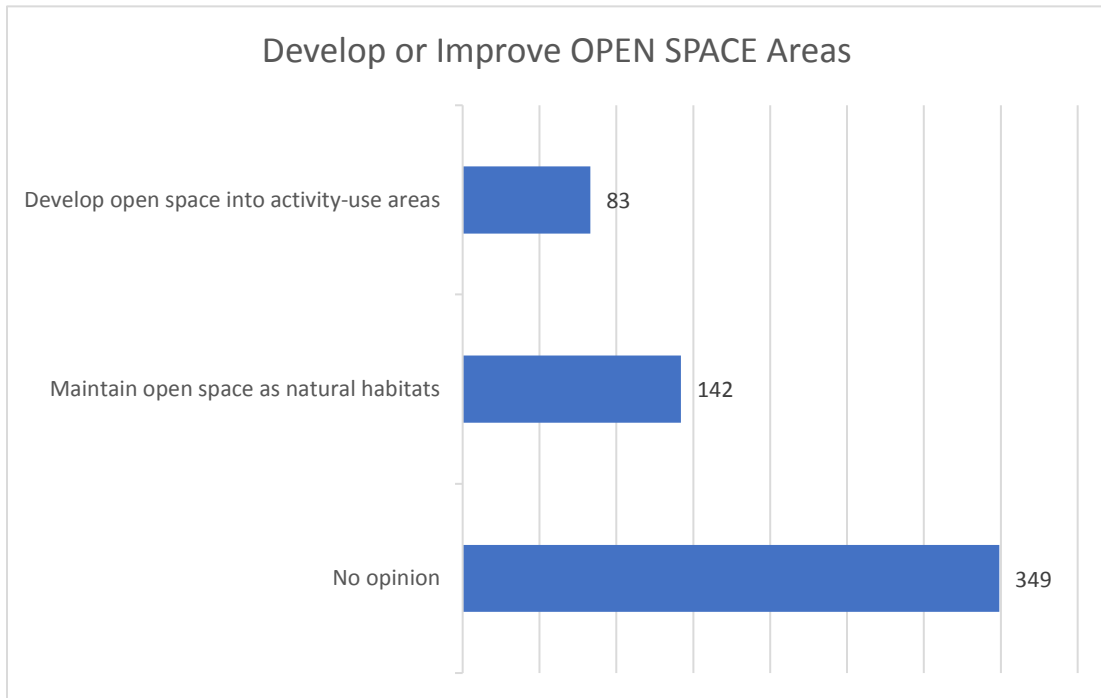




19. What would like to see developed or improved:



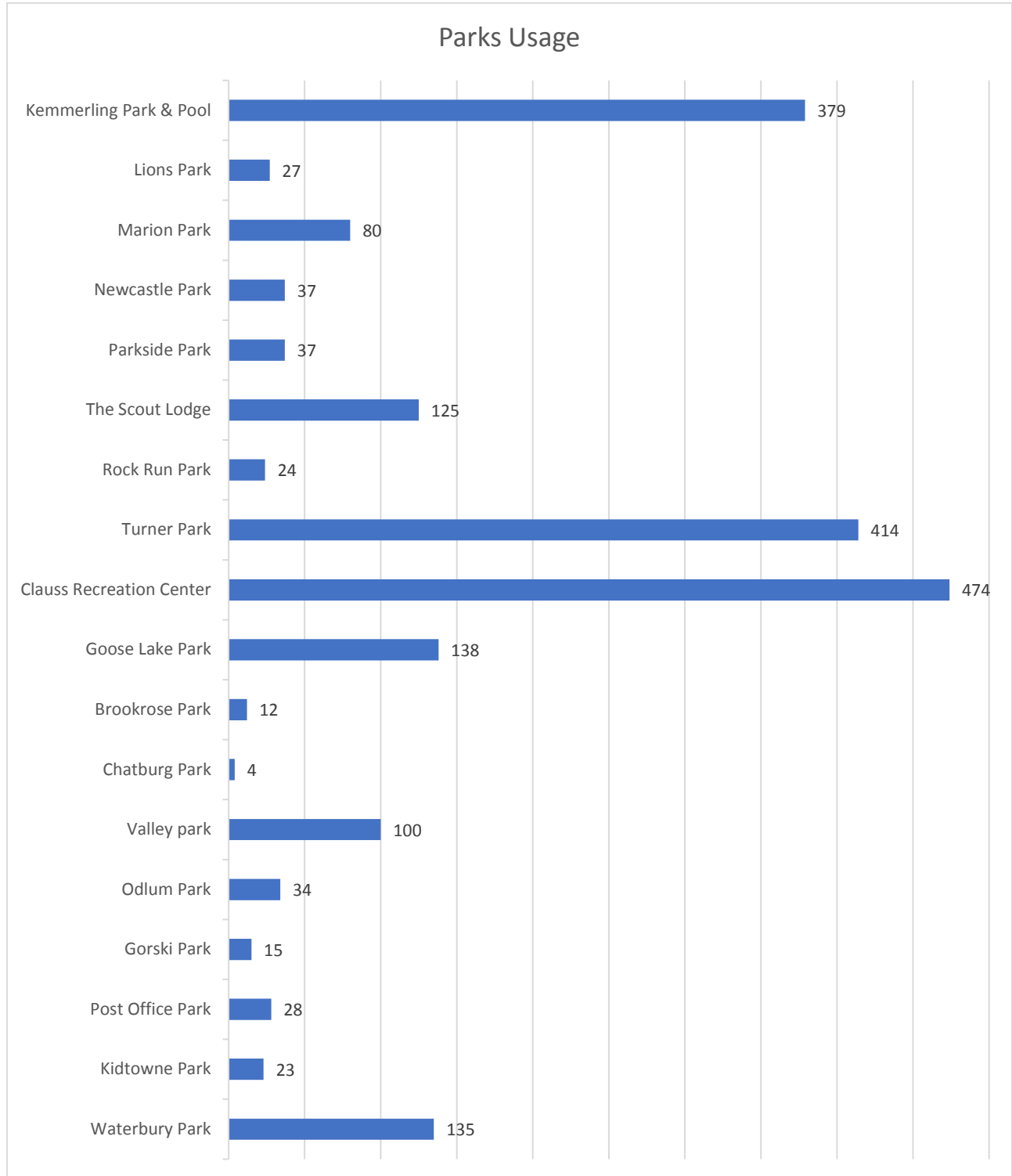
20. What would like to see developed or improved:



21. Turner Park Renovation comments

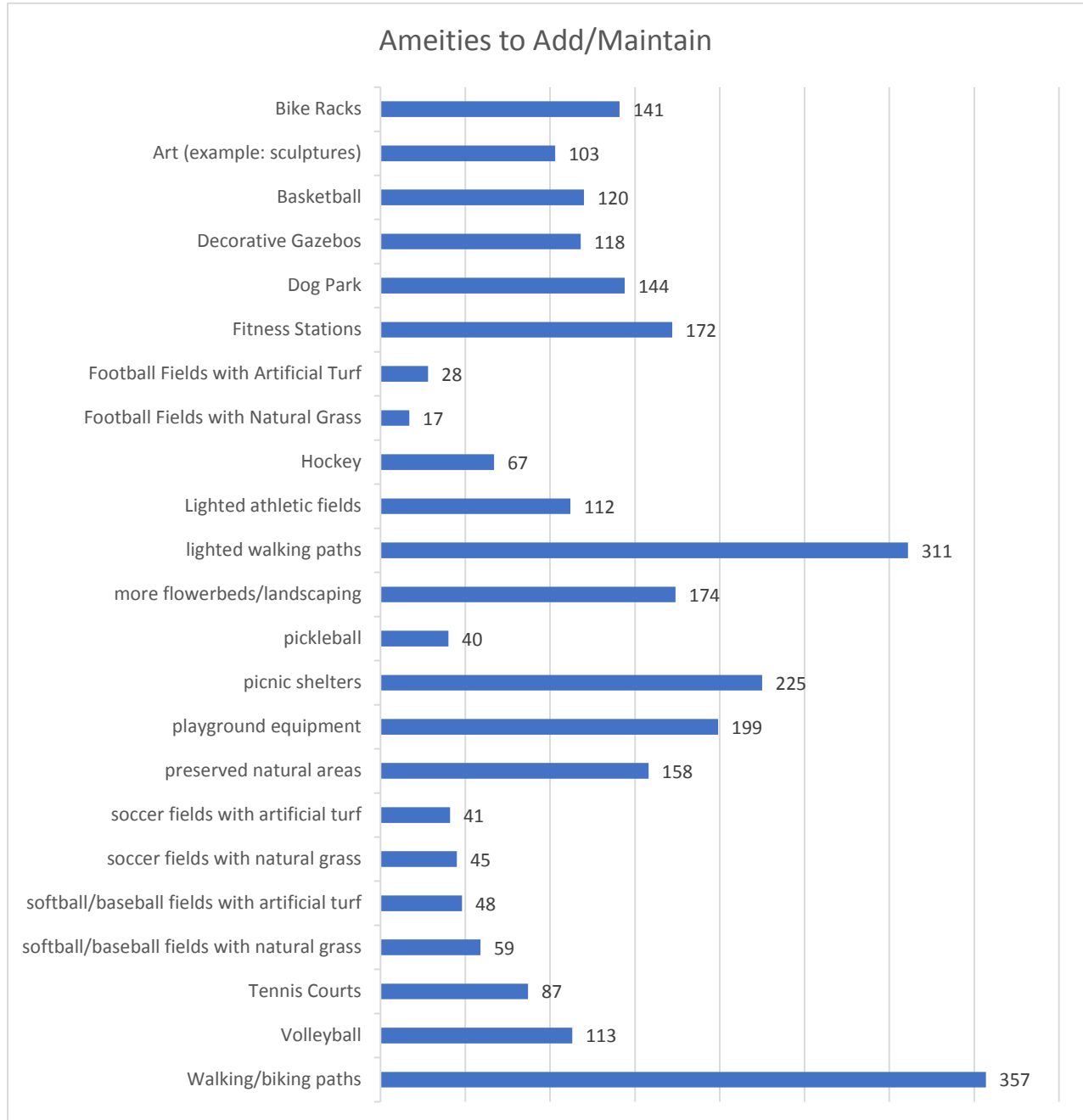


22. Which of the Roselle Park District parks do you or your family visit? (Check all that apply)





23. Which of the following amenities would you like to see added to the parks? (Check all that apply)





24. Rate the following most utilized outdoor and indoor resources:

