

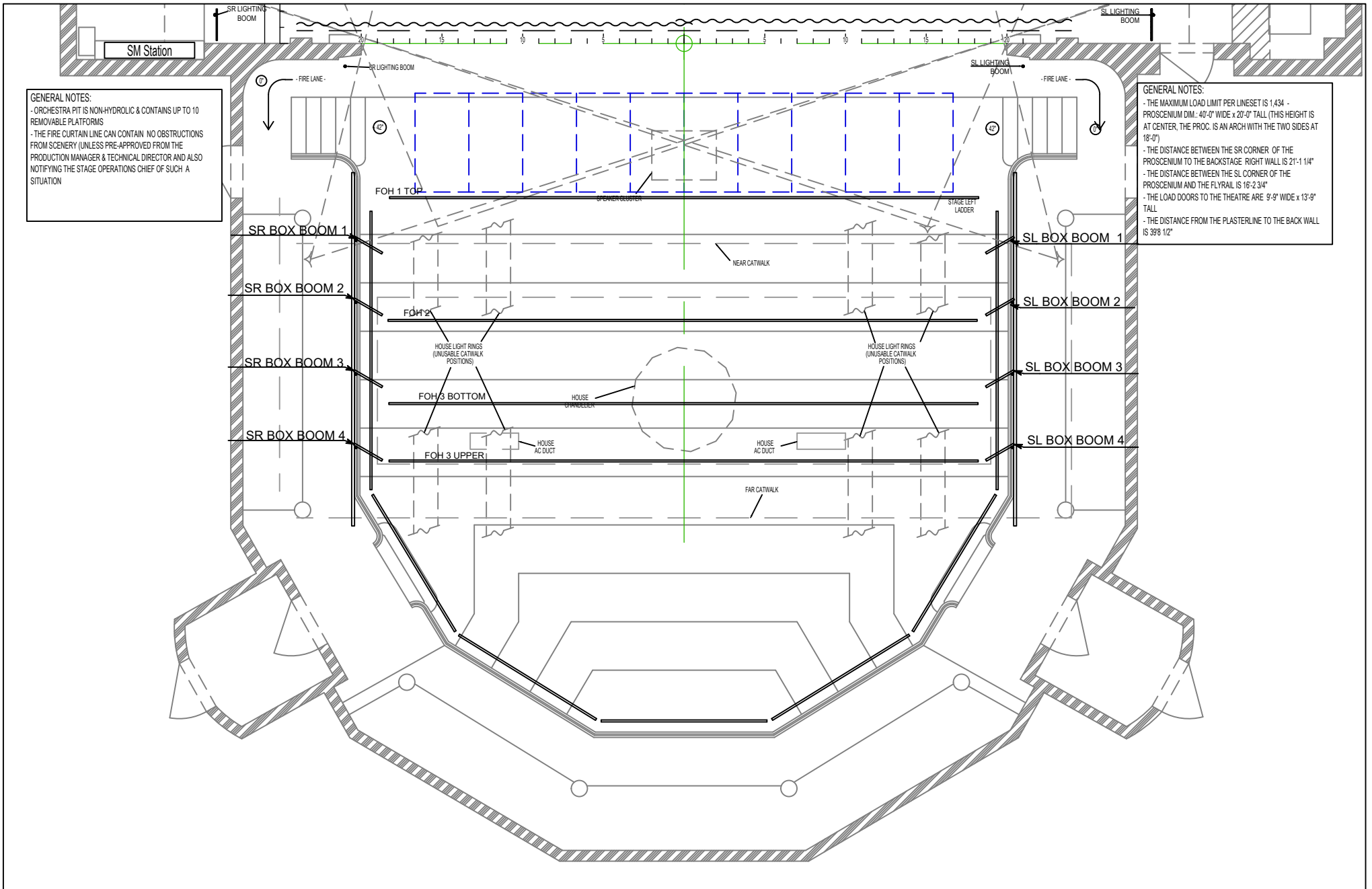
Line	Item	Height
41	Black Traveler Drapes	34'-8"
40	RPVCYC	33'-10"
39	LS39	33'-0"
38	LS38	32'-2"
37	LS37	31'-0"
36	6th Electric	29'-10"
35	Black Scrim	28'-8"
34	LS34	27'-10"
33	Black Legs	27'-0"
32	Black Border	26'-2"
31	LS31	25'-4"
30	LS30	24'-6"
29	5th Electric	23'-8"
28	LS28	22'-10"
27	LS27	22'-0"
26	Black Legs	21'-0"
25	Black Border	20'-2"
24	LS24	19'-4"
23	4th Electric	18'-6"
22	LS22	17'-8"
21	Blackout, FS	16'-10"
20	Black Legs	16'-0"
19	Black Border	15'-0"
18	LS18	13'-11"
17	3rd Electric	13'-2"
16	LS16	12'-5"
15	Movie Screen	11'-8"
14	Black Legs	10'-11"
13	Black Border	10'-2"
12	LS12	9'-5"
11	LS11	8'-8"
10	2nd Electric	7'-11"
9	LS9	7'-2"
8	LS8	6'-5"
7	Black Legs	5'-8"
6	Black Border	4'-11"
5	LS5	4'-2"
4	1st Electric	3'-5"
3	LS3	2'-8"
2	Grand Drape	1'-4"
1	Border	0'-10"

GENERAL NOTES:

- THE MAXIMUM LOAD LIMIT PER LINESSET IS 1,434 - PROSCENIUM DIM.: 40'-0" WIDE x 20'-0" TALL (THIS HEIGHT IS AT CENTER, THE PROC. IS AN ARCH WITH THE TWO SIDES AT 18'-0")
- THE DISTANCE BETWEEN THE SR CORNER OF THE PROSCENIUM TO THE BACKSTAGE RIGHT WALL IS 21'-1 1/4"
- THE DISTANCE BETWEEN THE SL CORNER OF THE PROSCENIUM AND THE FLYRAIL IS 16'-2 3/4"
- THE LOAD DOORS TO THE THEATRE ARE 9'-9" WIDE x 13'-9" TALL
- THE DISTANCE FROM THE PLASTERLINE TO THE BACK WALL IS 39'8 1/2"

GENERAL NOTES:

- ORCHESTRA PIT IS NON-HYDROLIC & CONTAINS UP TO 10 REMOVABLE PLATFORMS
- THE FIRE CURTAIN LINE CAN CONTAIN NO OBSTRUCTIONS FROM SCENERY (UNLESS PRE-APPROVED FROM THE PRODUCTION MANAGER & TECHNICAL DIRECTOR AND ALSO NOTIFYING THE STAGE OPERATIONS CHIEF OF SUCH A SITUATION)

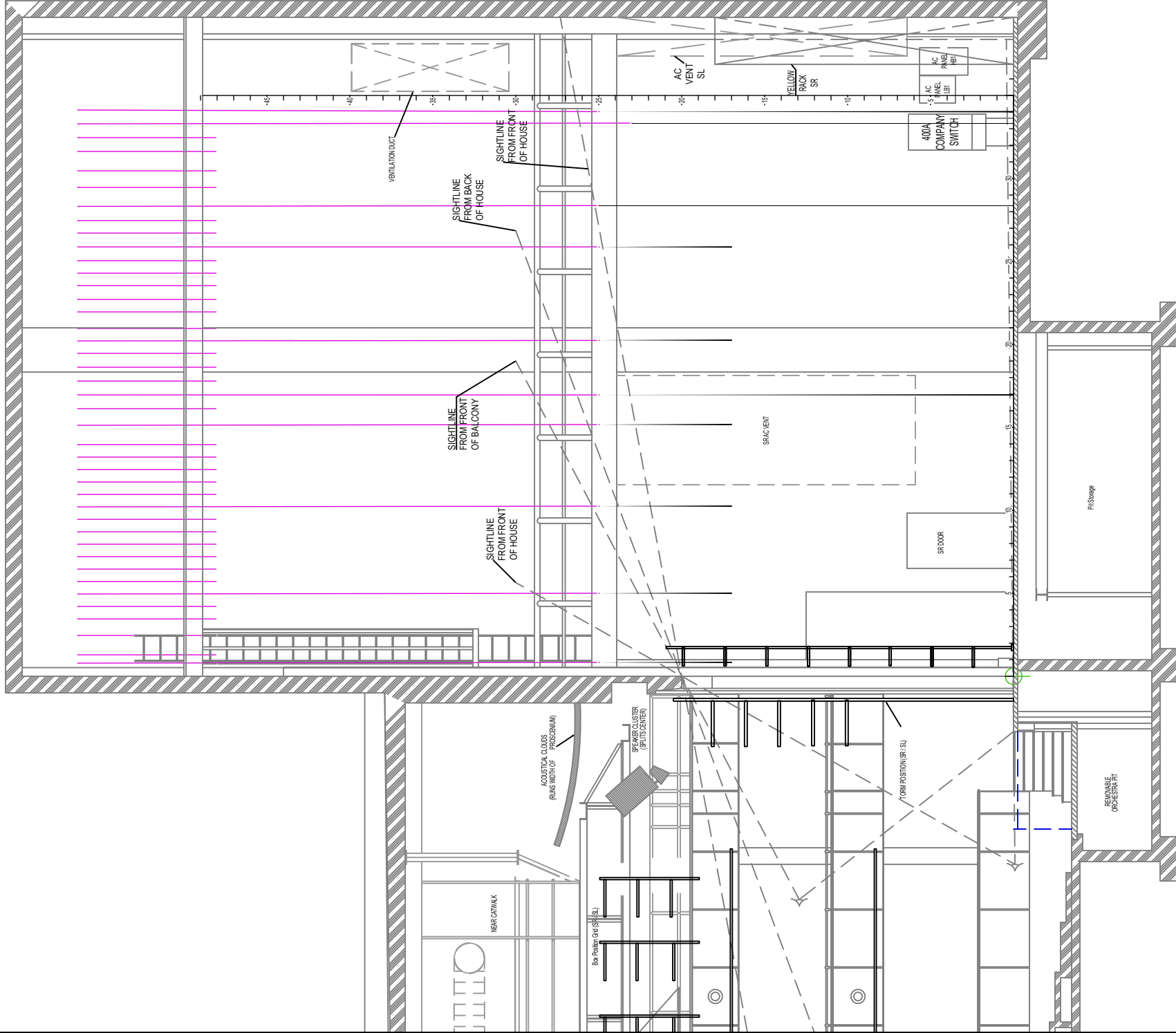


GENERAL NOTES:
 - ORCHESTRA PIT IS NON-HYDROLIC & CONTAINS UP TO 10 REMOVABLE PLATFORMS
 - THE FIRE CURTAIN LINE CAN CONTAIN NO OBSTRUCTIONS FROM SCENERY (UNLESS PRE-APPROVED FROM THE PRODUCTION MANAGER & TECHNICAL DIRECTOR AND ALSO NOTIFYING THE STAGE OPERATIONS CHIEF OF SUCH A SITUATION)

GENERAL NOTES:
 - THE MAXIMUM LOAD LIMIT PER LINESSET IS 1,434 - PROSCENIUM DIM.: 40'-0" WIDE x 20'-0" TALL (THIS HEIGHT IS AT CENTER, THE PROC. IS AN ARCH WITH THE TWO SIDES AT 18'-0")
 - THE DISTANCE BETWEEN THE SR CORNER OF THE PROSCENIUM TO THE BACKSTAGE RIGHT WALL IS 21'-1 1/4"
 - THE DISTANCE BETWEEN THE SL CORNER OF THE PROSCENIUM AND THE FLYRAIL IS 16'-2 3/4"
 - THE LOAD DOORS TO THE THEATRE ARE 9'-9" WIDE x 13'-9" TALL
 - THE DISTANCE FROM THE PLASTERLINE TO THE BACK WALL IS 398 1/2"

41	Black Traveler Drap	34'-8"	11
40	RP/CYC	33'-10"	10
39	LS39	32'-0"	9
38	LS38	32'-2"	8
37	LS37	31'-0"	7
36	6th Electric	29'-10"	6
35	Black Scrim	28'-8"	5
34	LS34	27'-10"	4
33	Black Legs	27'-0"	3
32	Black Border	26'-2"	2
31	LS31	25'-4"	1
30	LS30	24'-6"	
29	5th Electric	23'-8"	
28	LS28	22'-10"	
27	LS27	22'-0"	
26	Black Legs	21'-0"	
25	Black Border	20'-2"	
24	LS24	19'-4"	
23	4th Electric	18'-6"	
22	LS22	17'-8"	
21	Blackout, FS	16'-10"	
20	Black Legs	16'-0"	
19	Black Border	15'-0"	
18	LS18	13'-11"	
17	3rd Electric	13'-2"	
16	LS16	12'-5"	
15	Movie Screen	11'-8"	
14	Black Legs	10'-11"	
13	Black Border	10'-2"	
12	LS12	9'-5"	
11	LS11	8'-8"	
10	2nd Electric	7'-11"	
9	LS9	7'-2"	
8	LS8	6'-5"	
7	Black Legs	5'-8"	
6	Black Border	4'-11"	
5	LS5	4'-2"	
4	1st Electric	3'-5"	
3	LS3	2'-5"	
2	Grand Drap	1'-4"	
1	Border	0'-10"	

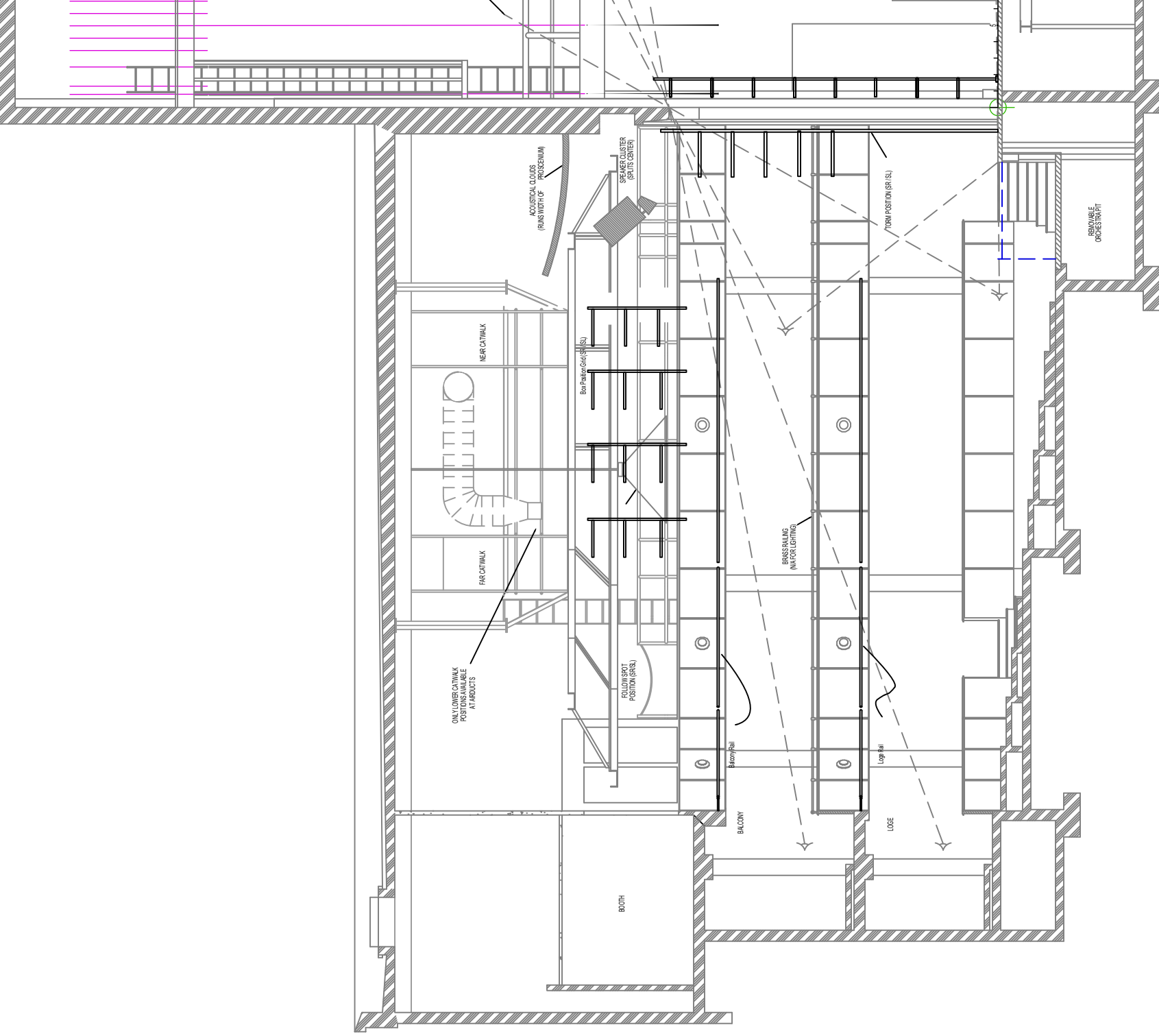
FLY SCHEDULE MEAS FROM PLASTERLINE



SCALE: 1/8"=1'-0"

Arts Center of Coastal Carolina

1 2 3 4 5 6 7



SCALE: 1/8"=1'-0"

Arts Center of Coastal Carolina