

The Need for Usage Analytics in Education Technology

The Need

Education leaders realize that an increasing percentage of their overall budgets are being spent towards online resources. These resources include:

- Instructional tools (e.g. curriculum, content, learning resources and relevant management systems)
- Productivity tools (e.g. office suite, email, and other personal communication systems)
- Internal business tools (e.g. student information, finance, facilities, personnel, travel, and other back office systems)

As spending on these tools increases, leaders need better insight on the true usage of these investments. They need usage data that is real-time and easy to access. The usage data should show how much each online resource is used, by who, when, where, on what device, and all the usage data should be together in one place. That's ClassLink Analytics.

Available Usage Data

ClassLink Analytics provides the following information (all reports can be filtered by day, week, month, year, & custom dates):

1. Logins into ClassLink (by student, teacher, building, course, & class section)
2. Logins by hour
3. Logins into all other apps (by student, teacher, building, course, & class section)
4. Most/Least used apps
5. Login activity by building, group, course, individual
6. Peak hours, days, buildings, users
7. Outside of school hours usage
8. Breakdown of device types and browser types
9. Ability to export data through CSV and RESTApi

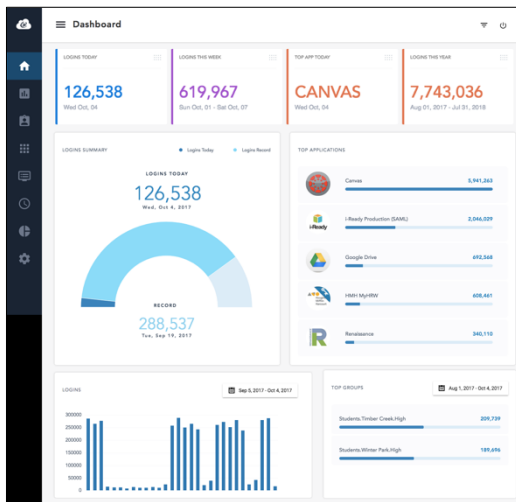
Web Dashboard and Mobile App

ClassLink Analytics is available as an online web dashboard and as a dedicated mobile iOS application.

How important is the data?

Increasingly, better decisions require better data. Having real-time usage data for all resources available with one-click can save time, save money, and help make better learning resource decisions for the school.

"Our campuses are logging into this site every day, there's value in it and we have the data to back it up". - Neil Bolton



PROFILE

Cedar Hill ISD, TX is a public-school district serving 8,000 students and employing 1,500 faculty and staff. Cedar Hill serves most of the city of Cedar Hill and portions of Grand Prairie, Ovilla, Duncanville, and Dallas.



PROJECT LEAD
Neil Bolton

Executive Director of Technology
neil.bolton@chisd.net
(972) 291-1581 ext 4078