

A photograph of a large industrial building with a grey metal facade and a red brick section on the left. A black sign with white and red text is mounted on the building. The sky is overcast and grey. A street lamp is visible on the left side of the building.

For Lease

54,356 SF Industrial Building

- In proximity all services including restaurants & shopping along Mount-Royal Avenue
- Close to public transportation (Bus 94 to Frontenac metro station in under 10 minutes)



4670 D'IBERVILLE STREET
Plateau Mont-Royal, QC H2H 2M2



Property Details

TOTAL BUILDING AREA

54,356 SF (INDUSTRIAL & OFFICE)

LAND AREA

70,620 SF

LOT NUMBERS

1 585 834, 1 591 796

FREIGHT ELEVATORS

2

CLEAR HEIGHT

12' & 24'

CONSTRUCTION YEARS

1913, 1950 & 1970

TRUCK-LEVEL DOORS

11

ELECTRICITY

600 A / 600 V

ZONING

I.3(4) INDUSTRIAL & OFFICE

PARKING

50 SPACES

Financial Information

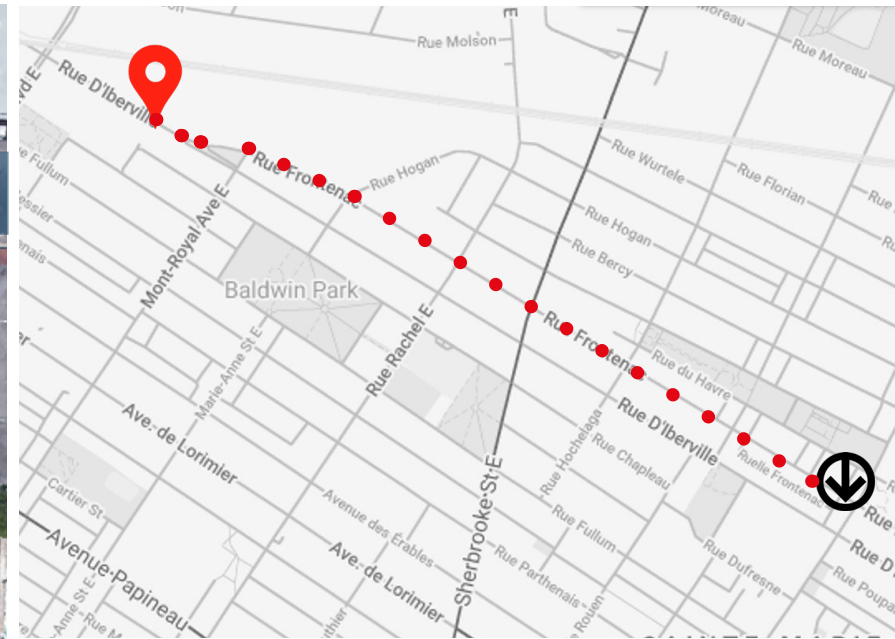
NET RENTAL RATE

Please contact us

TAXES & OPERATING EXPENSES

\$4.09 / SF

Location Overview



 BUS 94 TO  FRONTENAC
9 MINUTES

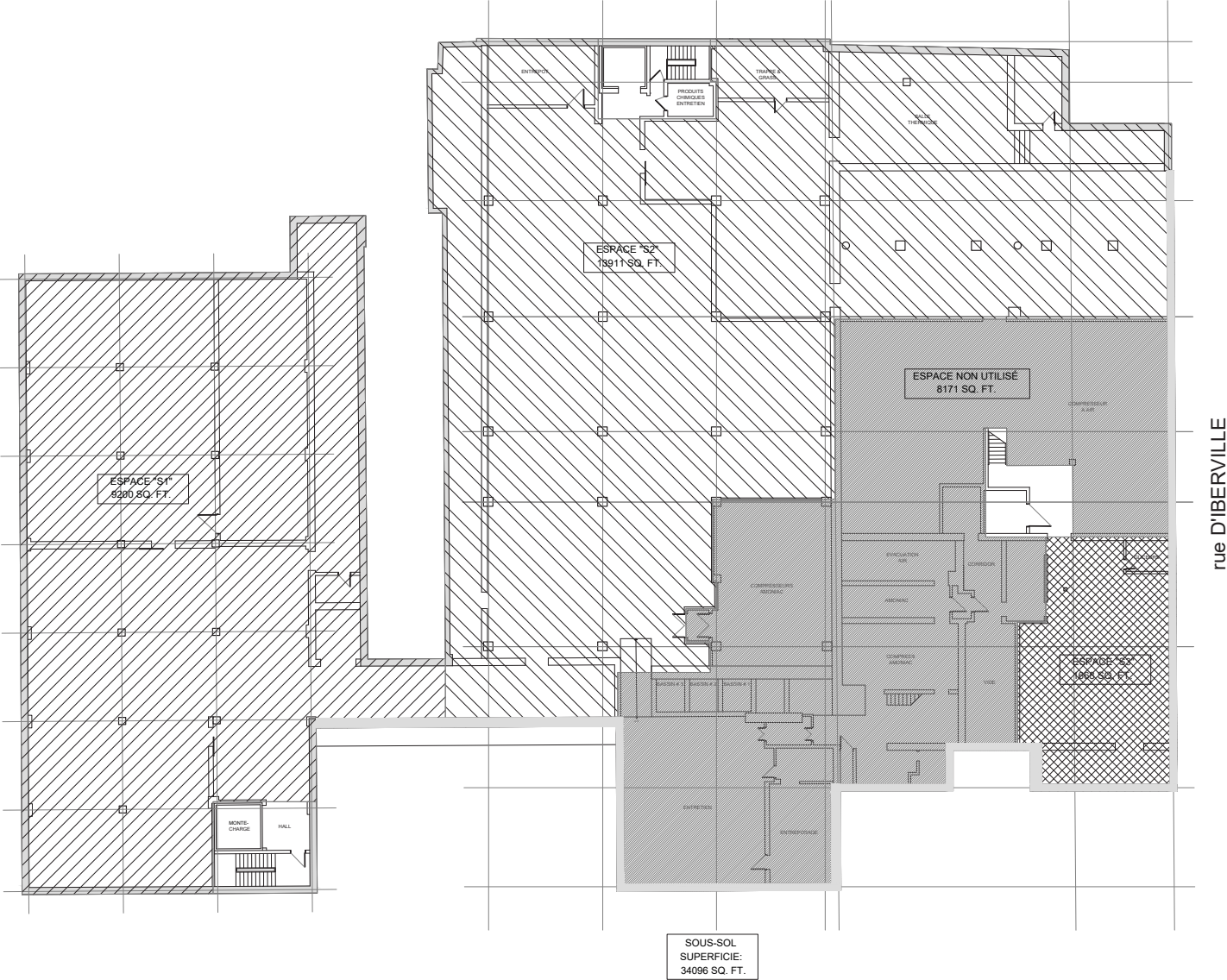
Amenities in the area



Floor Plans

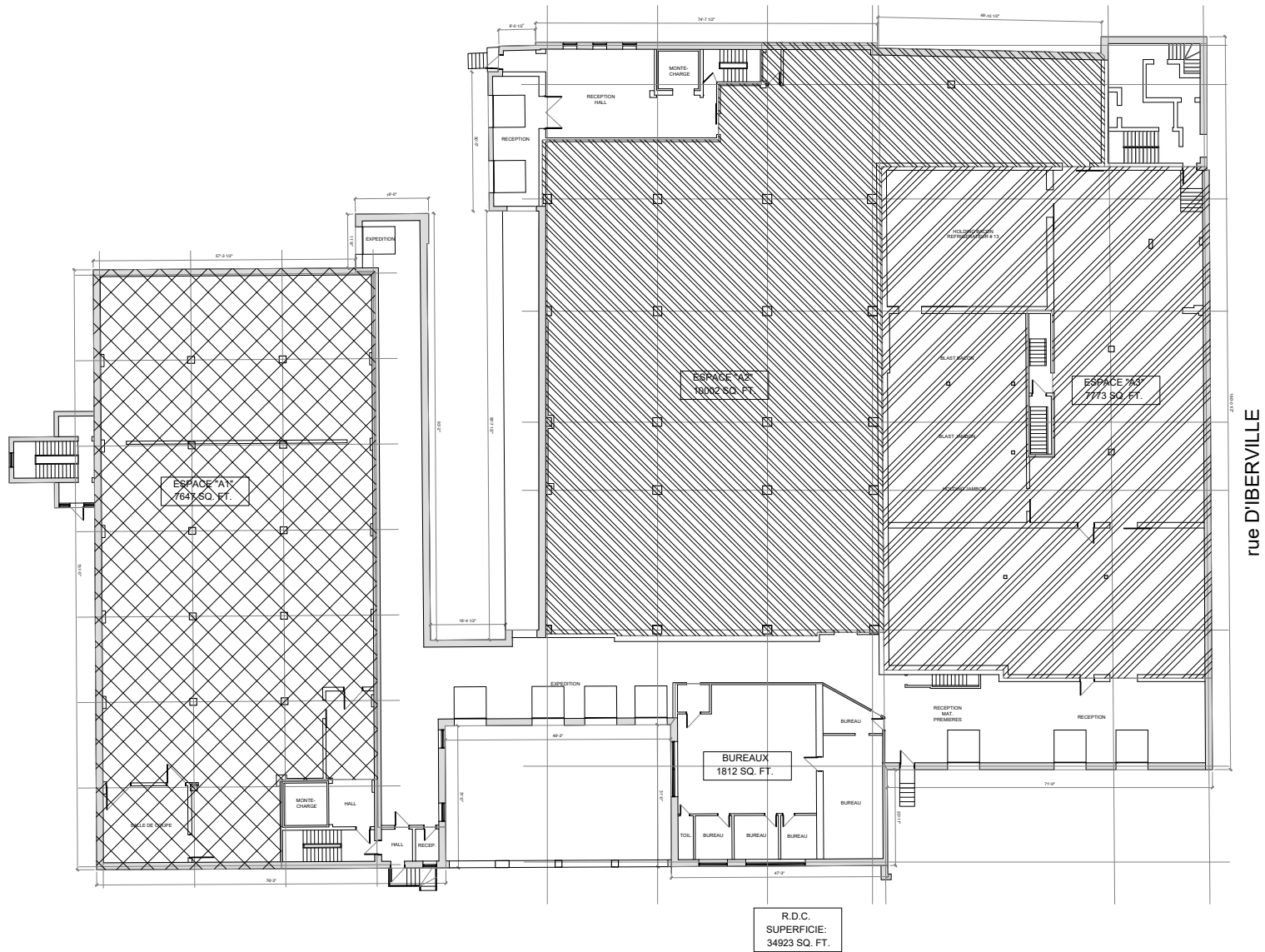
BASEMENT

4670, D'IBERVILLE STREET, PLATEAU MONT-ROYAL (QC) | **FOR LEASE**



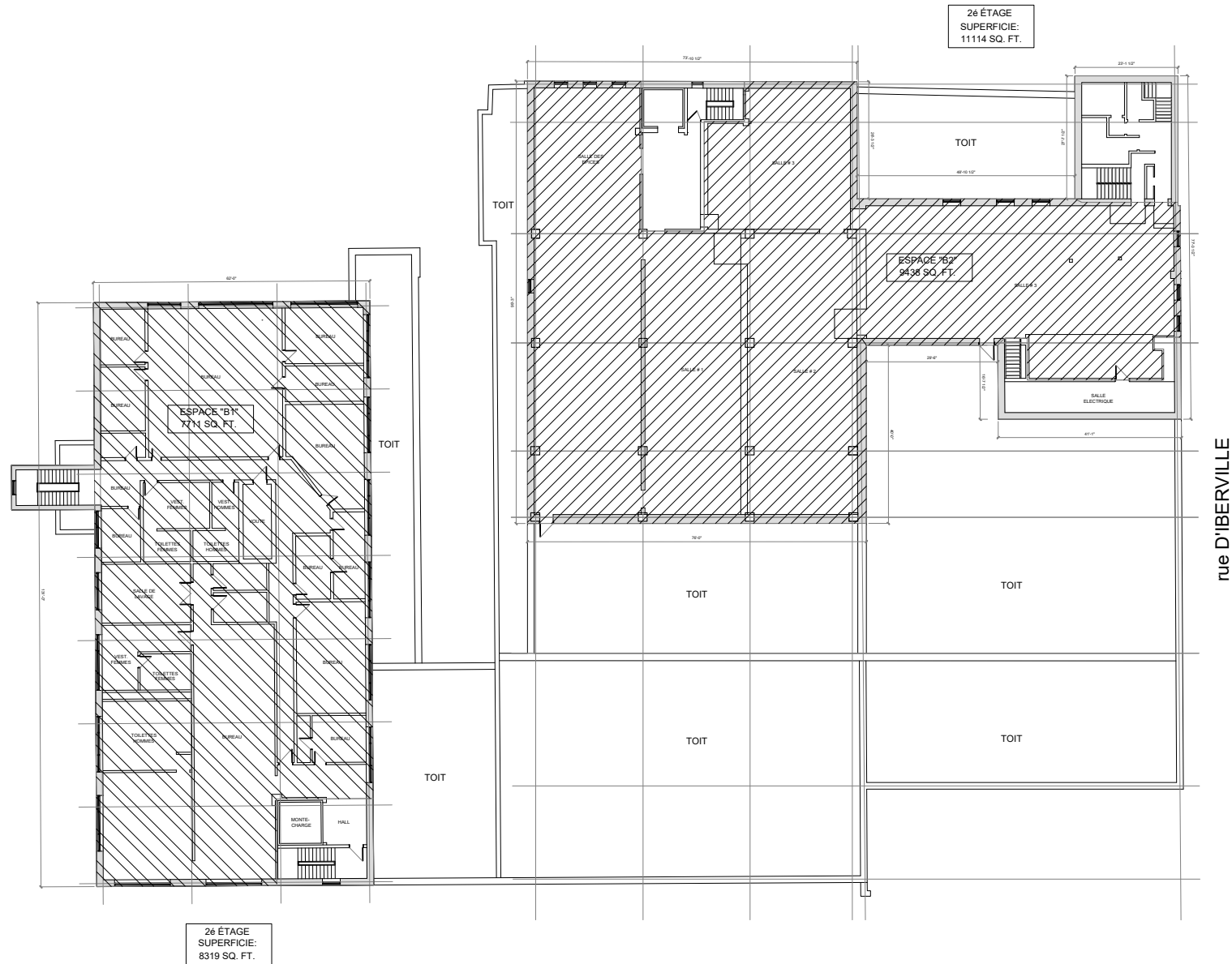
Floor Plans

GROUND FLOOR



SECOND FLOOR

4670, D'IBERVILLE STREET, PLATEAU MONT-ROYAL (QC) | **FOR LEASE**



Contact



Antoine Dumas
Sales Associate
+1 514 917 7760
antoine.dumas@am.jll.com

DISCLAIMER

© 2021 Jones Lang LaSalle Inc. All rights reserved. All information contained herein is from sources deemed reliable; however, no representation or warranty is made as to the accuracy thereof. JLL Real Estate Services, Inc. Real Estate Agency.



7405 route Transcanadienne, suite 360
Saint-Laurent (Québec) H4T 1Z2