

ST. DOMINIC SCHOOL REOPENING PLAN



TABLE OF CONTENTS:

LEARNING ENVIRONMENT
PAGE 2

HEALTH AND WELLNESS
PAGE 3

CATHOLIC IDENTITY &
COMMUNITY
PAGE 4

CURRICULUM &
INSTRUCTION
PAGE 4

EDUCATIONAL DESIGN &
TECHNOLOGY
PAGE 5

COMMUNICATION
PAGE 5

Dear St. Dominic Families,

This document is intended to provide more specific details about the reopening plans that have already been shared. As Pope Francis recently said, “We were put in this world to love [Jesus] and our neighbors. Everything else passes away; only this remains.” As a Catholic school community, we have an opportunity to demonstrate our love for Jesus and our neighbors by following the guidelines included here.

Our goal is to provide an in-person education for the families who want it, while recognizing that there are families who prefer to learn at home by choice or by circumstance. Our plan is designed to make that possible. The most important consideration is the health and safety of our students, our staff, and our families. To create the reopening guidelines, we have relied on information from the Centers for Disease Control, the Ohio Department of Education, the Cuyahoga County Board of Health, and the Diocese of Cleveland. Opening in person is not 100% risk free, even with all the safety measures we are putting in place. Each family will need to choose what is best for their own needs.

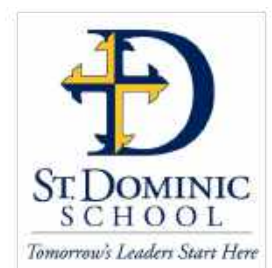
In addition, families should be aware that circumstances beyond our control may force the school building to close and require all students to shift to remote learning.

I am thankful for your support during this challenging time and for your anticipated cooperation in reopening St. Dominic School safely this fall.

God bless you,

Maureen Covington

Mrs. Maureen Covington
Principal





Learning Environment



Building Safety

Entering the Building

- Students arriving before 7:30 a.m. will sit at grade-level designated tables in the cafeteria.
- After 7:30 a.m., bus and car riders will go directly to their classrooms.
- All students entering the building must wear masks and use hand sanitizer that will be provided as they enter the doors.

Building Access

- Visitors to the building will be limited. Anyone who must enter the building will be screened before admission.

Social Distancing in Classrooms & Common Areas

- Classrooms and shared spaces are reconfigured to allow for at least the recommended minimum of 3 feet.
- Plexiglass partitions will be used in all rooms for an added measure of safety.
- Teachers may make use of outdoor spaces for learning.

Signage

- Signs will be used to designate stairways as either UP or DOWN.
- Signs will be used for spacing in the cafeteria line.

Cleaning & Disinfecting

- Shared spaces will be sanitized between uses with EPA-approved disinfectants.
- Classrooms and restrooms will be sanitized throughout the day.

Student Supplies & Materials

Students will have their own personal supplies. Shared technology will be cleaned between uses.



Dismissal

- At the end of the day, bus riders will exit to Winslow.
- Car riders in all grades will exit through the main doors after being dismissed from their classrooms. Parents must download the PikMyKid app and use it to indicate that they are in the pick up line.

Lunch and Recess

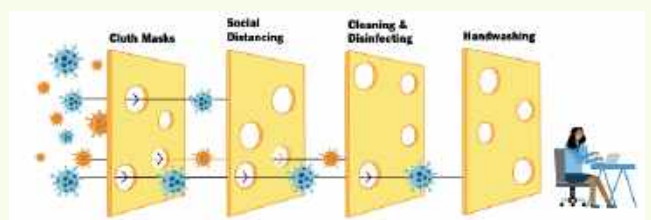
- The lunch schedule has 20 minute blocks during which two or three grades will either eat or have recess.
- The cafeteria tables have partitions. The hot lunch line is configured with partitions for no contact.
- Students will maintain distancing at recess and will have access to individual games/toys that will be used only in grade level cohorts and cleaned regularly.

After Care

The After Care program will follow the same health and safety guidelines the school is using, including keeping students in grade levels.

Extracurricular Activities

After school activities will only take place if they are able to follow the school guidelines.





Health & Wellness



Health & Wellness

Daily Health Screenings

- Parents will complete the symptom checker on the PikMyKid app before sending their child to school each day.
- Teachers will take each student's temperature using a contactless thermometer during homeroom.
- Staff members will submit a Health Screening form before arriving at work each day.

Hygiene

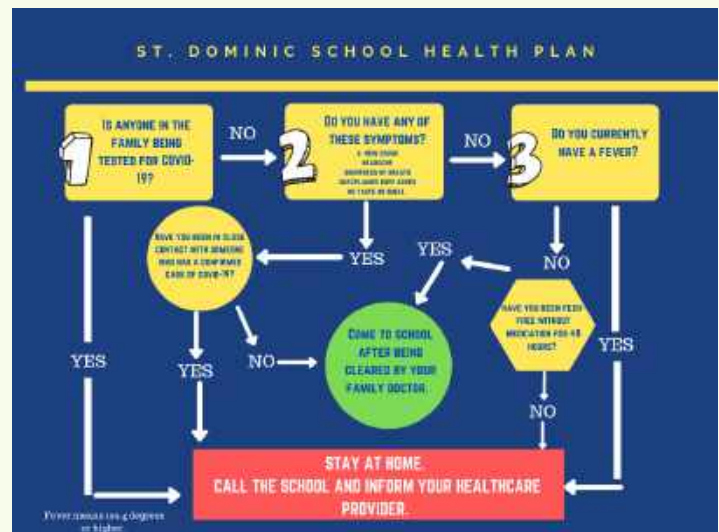
- Drinking fountains will not be used, but new water bottle refill stations will be installed in 2 locations.
- Students will have several hand washing sessions scheduled into their days. Hand sanitizing stations will be located throughout the building.

Personal Protective Equipment

- All teachers and staff will be required to wear masks.
- All students will be required to wear masks, shields, or gaiters.
- Students will be given time outside to safely remove their masks when possible. Each classroom will have a safe, designated, mask-free zone for students to spend a moment without their masks on.
- If a student forgets his/her mask, the school will provide one before he/she enters the building. A mask will be provided if a student's is damaged or lost.
- Masks are not included in the uniform rules and can be of any color or style as long as they are appropriate for a Catholic school environment.

Sick Students

- The clinic will have a health aide available from 7:30 - 2 each day.
- Any student exhibiting COVID symptoms will be isolated from others until his/her parents arrive.



Follow the above chart and do not send sick students to school.

COVID Exposure Protocols

If a student has been in close contact with someone who has tested positive for COVID-19, he/she MUST self-isolate for 14 days.

If a student has been in close contact with someone who is being tested for COVID-19, he/she must self-isolate for 14 days until/if the test result is negative.

Parents will be informed by the school if:

- a member of their child's class has tested positive for COVID-19.
- a member of their child's class is being tested for COVID-19.
- a teacher or staff member at the school with whom your child comes into contact is being tested or tested positive for COVID-19.

If a teacher or student tests positive, the class will quarantine at home for 14 days.

Families MUST inform the school about COVID testing or test results.



Curriculum & Instruction



Practicing our Faith

The most important part of our school community is our Catholic faith. To ensure that all students continue to grow in faith, we will make every effort to replicate our traditions and practices in a safe manner.

Students will come together each morning, at home or in person, to pray together.

One class each week will be invited to attend the Friday school Mass in the church. Other classes will watch the livestream.

Students will continue to have prayer partners and will have opportunities to connect with them safely, either virtually or socially distanced in person.

Our other traditions, such as the Living Rosary, All School Retreat Day, Service Learning, and prayer services will be adapted for safety.

Catholic Identity and Community



We know that students may have to learn remotely by either choice or circumstance. Our remote learning plan is parallel to in-class learning. Parents must select their learning option for at least the first quarter. Any changes must be approved by Mrs. Covington.



SYNCHRONOUS AND ASYNCHRONOUS

Students learning at home will check in each morning with their class and have regularly scheduled live lessons and small group check-ins.

Teachers, especially in primary, will limit the screen time for students and will assign work that can be done offline.



CONTINUITY OF CURRICULUM

All students, whether at school or at home, will learn the same skills and content, though it may be presented differently.

All work, whether remote or in person, will be assessed. Students will receive feedback and/or grades on their progress.



CLEAR COMMUNICATION

Parents and students will visit just one location to find each day's work.

Teachers will post lesson plans and will link all materials and assignments in Renweb, our learning management system.



Curriculum & Instruction



Educational Design & Technology



Communication With Families

St. Dominic School teachers will use Renweb to communicate lesson plans and assigned work each day. Live lesson times and logins will also be posted in Renweb.

Families must have their Renweb accounts updated before students begin school.



Technology Policies and Platforms

Devices

- Students in grades 5 - 8 are issued a Chromebook.
- Students in grades K - 4 who are learning remotely are expected to have a device. The school will provide a device if needed. Contact Mrs. Ciresi for help.

Acceptable Use Policy

The school has a new, more detailed Acceptable Use Policy that all students and parents must sign in order to have access to the school's platforms, programs, and networks.

Teaching Tools

- Each classroom will have a webcam that will be used for live lessons via Zoom or Google Meets. Teachers will have microphones to improve sound quality during instruction.
- The school has invested in increased WiFi capability and internet speed in anticipation of remote learning.

Learning Platforms

- Teachers will use a variety of platforms for instruction. Directions for using each platform will be provided in a document housed on Renweb.
- Training videos on using Renweb as a Learning Management System will be shared with parents and students.

Technology Troubleshooting

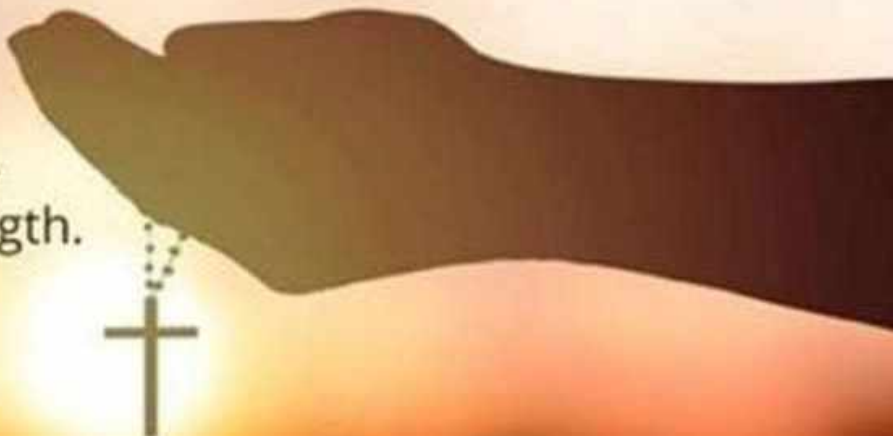
If a student or parent is having difficulty with technology, Mrs. Ciresi will be available to help troubleshoot the issue.

Communication



Lord, help me
Be prepared, but not anxious.
Be aware, but not desperate.
Be vigilant, but not in fear.
Be joyful, but not clueless.
Be faithful, but not careless.
Lord, be my hope and strength.

@FrGoyo twitter



Resources for Parents

TASK FORCE MEMBERS:

MAUREEN COVINGTON

FATHER TOM FANTA

TRICIA SLEMC

KRISTEN CIRESI

DAN BEST

DR. MAUREEN SUSTER

ANGELA TUGGLE

Thank you

[Ohio Department of Health COVID-19 Mental Health Toolkit](#)

[Child-Mind Institute Coping During COVID Resources](#)

[AACAP Resources](#)

[Ohio Department of Health Resources for Parents and Families](#)

[SAHM Resources for Parents and Teens](#)

[Video for Kids About Mask Wearing](#)

[How to Talk to Your Kids About Coronavirus](#)

[CDC Guidance on Talking With Children About COVID](#)

