

albex GOLD

200 mg/ml Oral Suspension for Cattle
ALBENDAZOLE



Low volume dairy cow dry-off dose



**NEW to Ireland's
most popular
Albendazole brand!***

What is **albex** GOLD ?

Albex Gold contains a higher concentration of the active ingredient albendazole (20%) versus the popular **Albex 10%** and **Albex 2.5%** products.



chanelle
PHARMA

What does it treat?

Stomach and gut worms (mature and developing - including inhibited larvae), lungworm (mature and developing), mature liver fluke. Albex Gold is also ovicidal against worm and fluke eggs.

Why use Albex Gold?

The lower dose rate reduces **labour, cost** per dose and discourages **underdosing** – something that should always be avoided. Where pour-ons are used during lactation, rotating to **Albex Gold** during the dry period helps to prevent wormer resistance.

When to use Albex Gold?

It is an ideal 'clean out' dose when cows are dried off, to prevent parasites causing issues during the dry period and subsequent lactation.

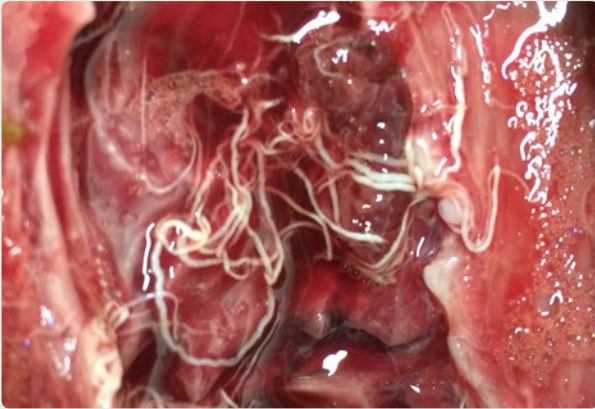
How to use Albex Gold?

Albex Gold is an oral drench.

Cow weight (kg)	Dosage (ml) Fluke & worm	Doses per litre	Dosage (ml) Worm	Doses per litre
200	10	100	7.5	133
300	15	66	11.25	88
400	20	50	15	66
500	25	40	18.75	53
600	30	33	22.5	44
700	35	28	26.25	38

Milk withdrawal: 72 hours

Meat withdrawal: 14 days



Lungworm

- Causes coughing during lactation
- Intake and yields reduced
- Condition loss
- Further complications – pneumonia, reduced fertility

Stomach worm

- High burdens on pasture put pressure on immune system
- Immune system must divert dietary energy towards response to parasites
- Reduced milk yield
- Potential condition loss

Liver fluke

- Reduced feed efficiency
- Condition loss
- Reduced milk yields
- Further complications – metabolic disease, clostridial disease, infertility

Sample drying-off parasite protocol

- Use **Albex Gold** at the point of drying off.
- Use a synthetic pyrethroid in conjunction (topical treatment for external parasites).
- Follow up in the weeks pre-calving with faecal analysis for liver fluke (egg count or coproantigen test), or use an adult flukicide (e.g. Oxytoclozanide – **Rumenil**).

Practical diagnostics

- **Stomach worm** – use bulk milk ELISA analysis to monitor Ostertagia ODR reading. Above 0.8/80% = 1 litre lost daily per head.
- **Liver fluke** – use bulk milk Fasciola hepatica ELISA analysis, faecal egg counts (note will only detect presence of adult fluke) or faecal coproantigen tests.
- **Lungworm** – monitor cows for coughing when moving to and from parlour. Monitor body condition.

Learn more about **Albex Gold** and the parasites affecting your animals at farmhealthfirst.com






albex GOLD

*Source Kynetec/IMAP. Accessed June 2020. Based on volume of albendazole sold 2015-2019.

Albex Gold 200 mg/ml oral suspension for cattle. Contains: Albendazole 20% w/v.

IE:  VPA 10987/123/001

Use medicines responsibly. Refer to product packaging and leaflets for full indications, side effects, precautions, warnings and contraindications. Further information can be found on the datasheet, SPC or at www.farmhealthfirst.com.

Distributed by: Chanelle Pharmaceuticals Manufacturing Ltd, Loughrea, Co. Galway, Ireland. Copyright © Chanelle Pharma 2020. All rights reserved.

Follow us

