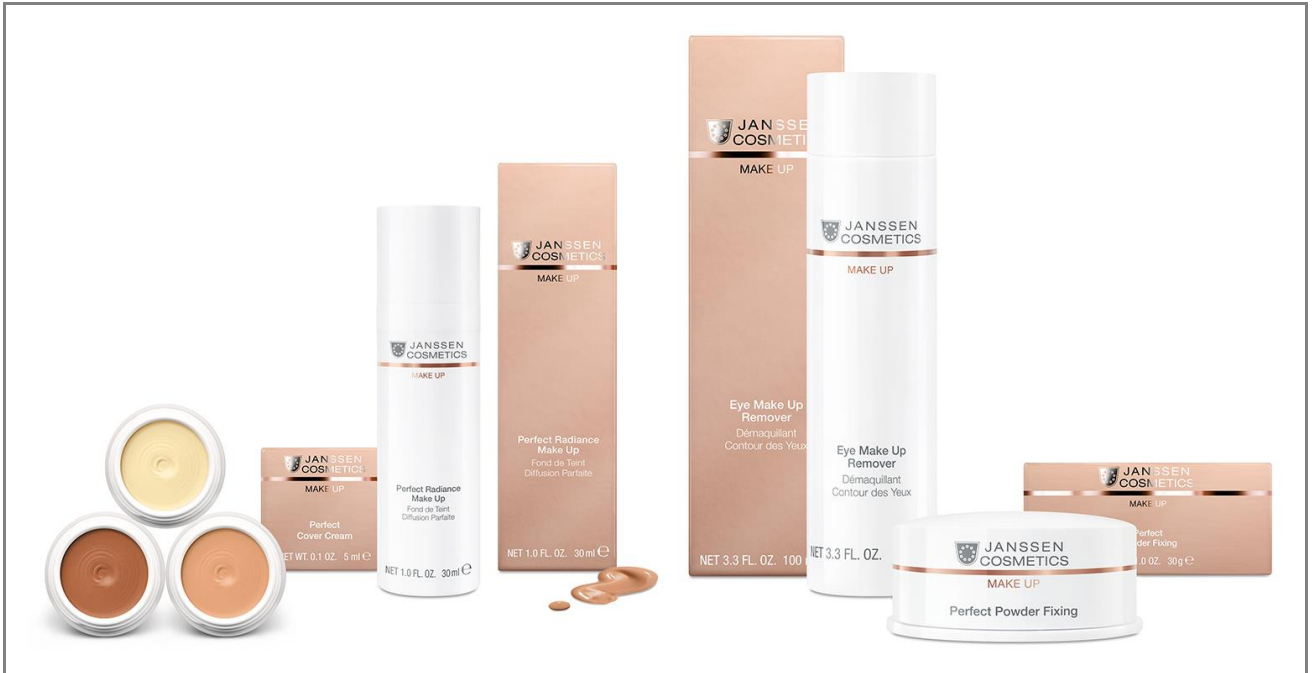


MAKE-UP



THE APPROPRIATE SOLUTION FOR EVERY OCCASION AND SKIN TYPE



PRODUCT	REFERENCE NUMBER RETAIL	CONTENT RETAIL	REFERENCE NUMBER WHOLESALE	CONTENT WHOLESALE
Perfect Radiance Make Up	8700.00	30 ml		
Perfect Radiance Make Up	8700.01	30 ml		
Perfect Radiance Make Up	8700.02	30 ml		
Perfect Radiance Make Up	8700.04	30 ml		
Perfect Cover Cream	C-840	5 ml		
Perfect Powder Fixing	C-841	30 g		
Professional Camouflage Set			C-849	Set
Eye Make Up Remover	8800	100 ml	8800P	200 ml

JANSSEN COSMETICS markets a wide range of systematic care products, and also offers decorative cosmetics as well as the skin type-specific products. The JANSSEN COSMETICS make-up products not only achieve an outstanding optical effect - the skin is also cared for at the same time, leaving it smooth and supple.

MAKE-UP

- **Soft velvety finish**
- **Easy to spread evenly**
- **Long-lasting and retains colour**
- **Hydrates and preserves moisture**
- **UV protection**
- **Prevents premature photoageing**
- **Paraben-free**

RET.
30 ml
Ref.
8700.00
8700.01
8700.02
8700.04



Perfect Radiance Make Up

FOR PERFECT RADIANCE, AN EVEN COMPLEXION AND UV PROTECTION

Perfect Radiance Make Up is a cosmetic that gives the wearer a natural look and provides UV protection. The light, non-greasy formula is absorbed into the user's skin immediately and guarantees them a beautifully even and radiant complexion all day long.

Perfect Radiance Make Up contains special coated pigments based on amino acids. These make it easy to spread, ensure its colour remains consistent and enable it to bond to the skin extremely well. At the same time, light-reflecting pigments give the skin it's applied to an even, flawless complexion and a velvety finish. An innovative film former holds the cosmetic in place for hours.

Perfect Radiance Make-Up offers wearers a perfect combination of tinting and nourishment. Biotechnologically obtained anti-ageing active substances such as Pseudoalteromonas ferment extract and hyaluronic acid moisturise the skin and reduce wrinkles. In addition, UVA and UVB filters provide reliable protection from photoageing.

The foundation is easy to apply and leaves the skin feeling uniquely pleasant.



Home care application

After cleansing your skin and applying your usual care product, spread the cosmetic over your face, rubbing it in gently so that it bonds to your skin as well as possible. You can also use a damp make-up sponge.

* Available in four colours:



ACTIVE SUBSTANCES

- **Trimethylsiloxysilicate:** An innovative film former that holds make-up in place
- **Sodium lauroyl glutamate and lysine:** Combine to form a pigment coating based on amino acids that makes the cosmetic easy to spread and ensures it bonds to the skin
- **Pseudoalteromonas ferment extract:** Prevents the skin from drying out, increases collagen and elastin, and reduces wrinkles
- **Hyaluronic acid:** Moisturises the skin
- **Titanium dioxide:** A physical shield against UV light
- **Ethyl methoxycinnamate:** A UVB filter
- **Octocrylene:** A UVA and UVB broad-spectrum filter

THE CAMOUFLAGE CONZEPT



The camouflage concept from JANSSEN COSMETICS is the perfect optical solution to skin problems. It serves to balance out skin blemishes and provide perfect optical concealment for skin problems and anomalies. Although the products do not contain any substances which act specifically to influence the skin's function, their applications are diverse: acne, scars, port-wine stains, pigmentation spots, redness, freckles, red veinlets, varicose veins or also as special make-up on festive occasions (photos, bridal make-up).

Perfect Cover Cream (Ref. C-840)

Special, highly-concealing camouflage cream. Available in six different color nuances, from light (color 1) to dark (color 6). Two to three colors can always be individually mixed for perfect adaptation to the skin's relevant shade. Dermatologically tested.

Perfect Powder Fixing (Ref. C-841)

Special fixing powder which makes the camouflage cream water-resistant and virtually wipe-proof. Rain and wind have as little effect on the special make-up as taking a shower or swimming in the sea.

Professional Camouflage Set (Ref. C-849)

Contains all of the above specified references in one set for application in the salon.

APPLICATION

The professional camouflage set has been developed to smooth areas of uneven skin and conceal skin anomalies and to provide a good hold for make-up.

Please observe the sequence specified below when applying the product in order to achieve perfect optical coverage of esthetically disturbing areas of skin:

- | | |
|-----------------------------------|--|
| Skin pre-treatment | <ul style="list-style-type: none">• Cleanse with a cleansing gel/lotion appropriate to the skin type• Refresh with a corresponding tonic |
| Deep cleansing of the skin | <ul style="list-style-type: none">• Carry out a facial or body peeling → Removal of dead skin cells → Smooth skin surface, areas of uneven skin are smoothed and the subsequent cream is absorbed better. |
| Skin care | <ul style="list-style-type: none">• Skin care cream according to the skin's type, condition and needs. |
| Apply camouflage cream | <ul style="list-style-type: none">• Using a spatula, mix an approximately pea-sized quantity of one or more shades of Perfect Cover Cream on the back of your hand and mix until the color combination matches the skin color tone. Apply onto the skin using a make-up sponge. If necessary, moisten the sponge slightly and work the cream in well. Apply in thin layers. Repeat the process until the desired coverage intensity is achieved. |
| Apply fixing powder | <ul style="list-style-type: none">• Apply plenty of fixing powder (Perfect Powder Fixing) on top so that the camouflage cream holds well. After allowing to work in the approx. 10 minutes, the camouflage cream is waterproof and wipe-resistant. Use a baby's brush (soft bristles) to brush off surplus powder. |
| Blusher and make-up | <ul style="list-style-type: none">• Apply a little blusher to accentuate the face naturally. Then apply make-up as usual. |
| Camouflage cream removal | <ul style="list-style-type: none">• Rub the make-up areas of skin with the special cleansing cream → Remove the cream with a paper tissue → Then apply a cleansing lotion appropriate to the skin type to subsequently cleanse the skin. |
| Skin care | <ul style="list-style-type: none">• Skin care cream according to the skin's type, condition and needs. |

Tip: Perfect Cover Cream colors 01 and 02 are outstanding concealers for e.g. rings around the eyes. Simply pat the cover cream over the dark eye area using a fingertip. In the case of dehydrated skin, use an eye cream beforehand. Then distribute Perfect Radiance Make Up or tinted day cream over the entire face to balance.

Perfect Cover Cream colors 05 and 06 are outstanding for accentuating the cheeks. To do this, simply apply a little cover cream along the arc of the cheekbone like a cream blusher.

MAKE-UP

- Suitable for contact lens wearers
- Cools and refreshes even during cleansing
- Removes eye and lip make-up
- Non-greasy
- Perfectly cleansed eye area
- Soft, supple eyelids

RET.
100 ml
Ref.
8800

WHL.S.
200 ml
Ref.
8800P



Eye Make Up Remover

EYE MAKE UP REMOVER

Completely removing (eye) make-up is the best method of protecting the eyes and eyelids. The eye area should be cleansed thoroughly without rubbing or scrubbing. Make-up removal must not therefore be carried out mechanically; instead, this is the task of a special eye make-up remover which respects the tenderness of the eyelids and eye lashes.

Eye Make Up Remover meets this requirement. Its softening and dissolving contents are embedded in a soft gel texture, which gently encompasses each eye lash. The formulation contains a minimum of selected substances to treat the eye area as gently as possible with regard to the aspect of safety. The pH value of 7.2 is oriented towards the pH value of the slightly alkaline tear fluid.



ACTIVE SUBSTANCES

- **Butylene glycol:** Solvent with moisture-retaining effect. Very good skin tolerability, particularly with regard to daily application



Home care application

Removal of make-up from the eyelids and eye lashes should always take place prior to actual facial cleansing. When doing this use of a fresh pad coated with Eye Make Up Remover for each eye is preferable. Apply the pad, allow to work in briefly and stroke gently over the eyes, from the roots to the ends of the eye lashes. Rubbing and pulling on the eyelids should be avoided, simply to prevent the mixture of cleanser and make-up residues from getting into the eyes.

Tip: Also suitable for removing lip make-up!



SKIN APPLETS



PROFESSIONAL SKIN CARE IN THE BEAUTY INSTITUTION

FOR ALL SKIN

TREATMENT SEQUENCE

MAKE-UP series products can be individually combined with all products for daily skin care. Of course, each individual product should only be applied after cleansing and care.

The make-up should be selected according to preference and purpose:

Perfect Radiance Make Up for a natural appearance with medium coverage.

Perfect Cover Cream for perfect optical concealment.