

Starting with CPR Colour

Kick start your confidence by learning the ins and outs of the unique CPR Colour system.



- CPR Colour Bonding System
- CPR Colour Wheel
- Underlying Pigments
- Powder Lightener
- Toning
- High Lift
- Cool and Warm Grey coverage

CPR Colour *bonding system*



1

Prepare hair

Reconstruct & equalise
the porosity of hair



Colour Prep



Detox

*If required

2

Colour service

Strengthen, nourish and protect
whilst colouring hair



**CPR Colour
& Developer**



**Colour
Advantage**

3

Treat hair

Secure colour within the hair
Rinse-out treatment



Colour Secure

4

After care

Seal down & protect the cuticle
Leave-in miracle colour extender



Vitalink™

1

Prepare hair

Reconstruct & equalise the porosity of hair



Colour Prep

Porosity Equaliser
Use before & during colour services
Improve colour penetration & retention

🌿 **natural technology** Vegetable & Soy Protein, Colza Plant, Grape & Sunflower Seed Extract & Panthenol

220mL



Detox *If required

Sulphate free cleansing shampoo
Removes impurities & build-up
Prepares hair for professional services

🌿 **natural technology** Wheat Protein + Bio-degradable Chelating Agent

500mL

2

Colour service

Strengthen, nourish and protect whilst colouring hair



CPR Colour & Developer

Hybrid technology: 1 tube - 6 results
Beautiful, uniform colour results
Advanced micro-pigment technology
Deeply nourished & protected

🌿 **natural technology** Quinoa Protein, Sunflower Seed Extract, Jojoba, Argan, Olive & Meadowfoam Seed Oil

120mL | 1L Developer



Colour Advantage

Bond Multiplier, Colour extender
Colour lasts longer with more vibrancy
Soothes, calms & protects the scalp

🌿 **natural technology** Wild Daisy & Chamomile Extracts, Quinoa Protein, Jojoba, Argan & Colza Plant Oils

Add 10% CPR Colour Advantage to all CPR Colour & Powder lightener mixations

500mL



3 Treat hair

Secure colour within the hair
Rinse-out treatment



Colour Secure

Oxygen Stability Creme
Stabilises & secures colour molecules
Prolongs colour life, amplifies shine

🌿 **natural technology** Jojoba Oil, Quinoa,
Baobab & Wheat Proteins, Grape &
Sunflower Seed Extract & Panthenol

900mL

4 After care

Seal down & protect the cuticle
Leave-in miracle colour extender



Vitalink™

Leave-in bond multiplier, colour extender
Strengthens hair by up to 40%
Smooths & seals the cuticle

🌿 **natural technology** Quinoa & Carob
Protein & Sunflower Seed Extract +
Aminodew

10mL

Instant Miracle Treatment: On towel dried hair, apply a small amount through mid-lengths and ends. Massage through with fingers & disperse using a wide tooth comb. Leave-in. Follow with CPR products & style as desired.

CPR Colour

hybrid technology

1 Tube = 6 Results

- 01 | Semi colour
- 02 | Demi colour
- 03 | Toning
- 04 | Permanent Colour
- 05 | Grey Coverage
- 06 | High Lift



CPR Developer

lift & application

CPR Crème Developers are formulated to achieve optimal results with CPR Colour.

Benefits:

- Infuses condition, softness & shine
- pH stabilised for consistent results

Natural Technology

Olive Oil & Meadowfoam Seed Oil

Crème Developers

5vol - 1.5%	Toning Formulations Semi Colours Demi Colours
10vol - 3%	Permanent Colours Level-on-level Grey Coverage Up to 1 level of lift
20vol - 6%	Permanent Colours Grey coverage 1 to 2 levels of lift
30vol - 9%	Permanent Colours High-Lift Blondes 2 to 3 levels of lift
40vol - 12%	Permanent Colours High-Lift Blondes 3 to 4 levels of lift

CPR Developer

hybrid results

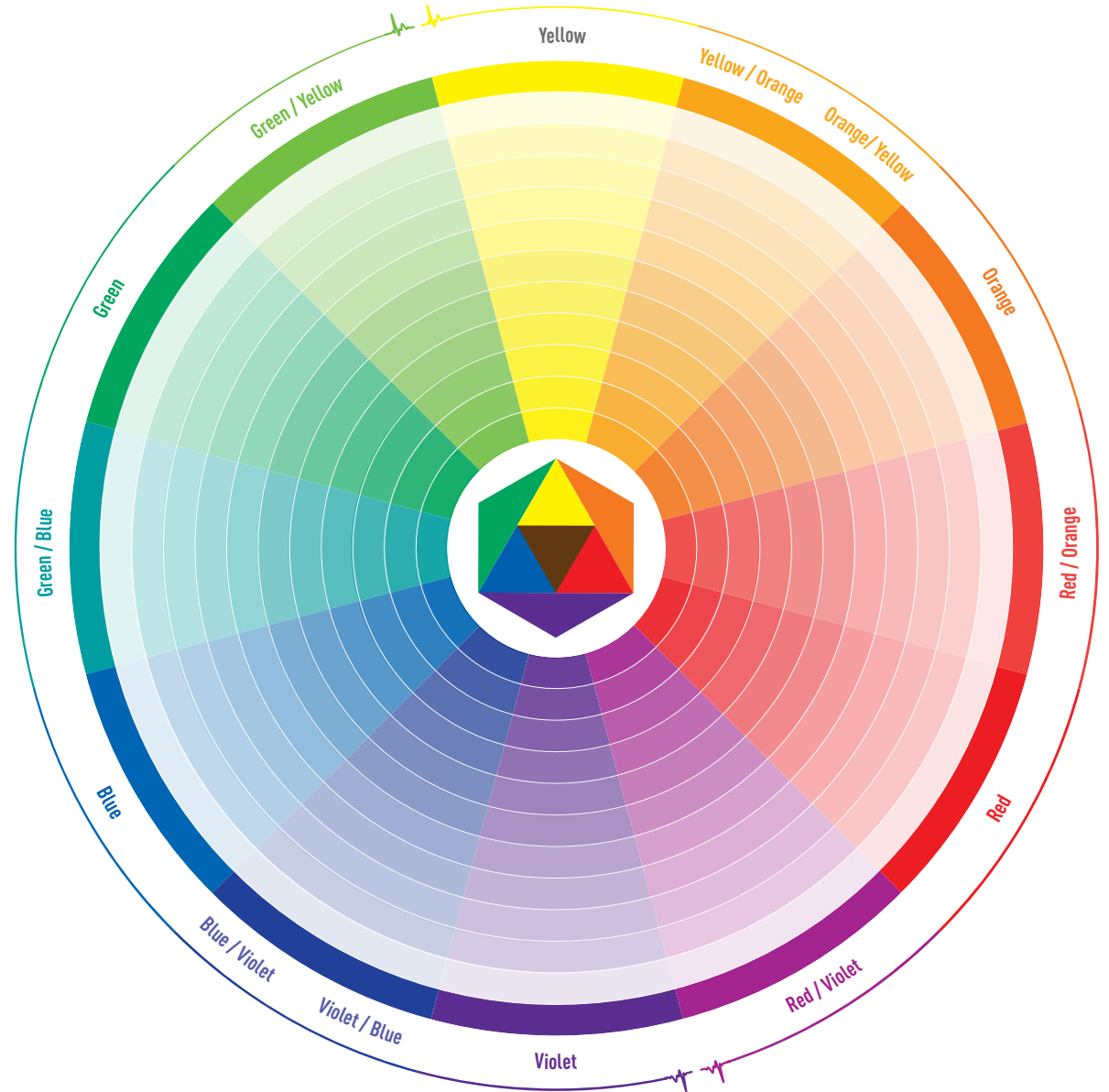
Hybrid colour technology

Changing the developer strength, mixing ratio & timing, will determine the colour results achieved.

Colour Result	Mixing Ratio (Colour + Developer)	Developer	Timing (No Heat)	Timing* (Gentle Heat)
Toning Formulas Ammonia-free Toners	1 + 1 (faster toning) 1 + 2 (slower toning)	5vol-1.5%	Visual timing	Not recommended
Semi Colours	1 + 1 + 1 1-part CPR Colour + 1-part CPR Developer + 1-part CPR Colour Secure	5vol-1.5%	20 mins	10 mins
Demi Colours	1 + 1	5vol-1.5%	25 mins	12 mins
Permanent Colours	1 + 1	10vol-3%, 20vol-6%, 30vol-9%, 40vol-12%	35 mins	17 mins
Grey Coverage	1 + 1	10vol-3%, 20vol-6%	35 - 45 mins	17 - 22 mins
High Lift Blondes	1 + 2	30vol-9%, 40vol-12%	50 - 60 mins	25 - 30 mins

*Timing using any type of gentle heat : Allow the hair to cool down for up to 3 minutes before rinsing

The CPR *colour wheel*



CPR Colour *number system*

12 (HL)	High Lift
PV	Pure Vibrants
T	Ammonia-free Toners

.0	Natural
.00	Intense Natural
.7	Chocolate
.71	Chocolate Divine
.11	Matte Ash
.1	Ash
.3	Gold
.32 / .31	Beige
.4	Copper
.6	Red
.5	Mahogany
.2	Violet
.12	Cendre

CPR Colour *number system*

e.g. 3 . 2 2 6

Dark Intense Violet Red Brown



- 3 | Dark Brown (Level)
- 2 | Violet (Primary Reflect)
- 2 | Violet (Secondary Reflect)
- 6 | Red (Tertiary Reflect)



Underlying Pigments & counteracting colours



Natural level of depth		Underlying pigments	Counteracting colours
10	Lightest Blonde	Palest Yellow	Violet
9	Very Light Blonde	Pale Yellow	Violet
8	Light Blonde	Yellow Orange	Violet Blue
7	Blonde	Orange Yellow	Blue Violet
6	Dark Blonde	Orange	Blue
5	Light Brown	Red Orange	Green Blue
1-4	Black to Brown	Red	Green

The CPR colour wheel

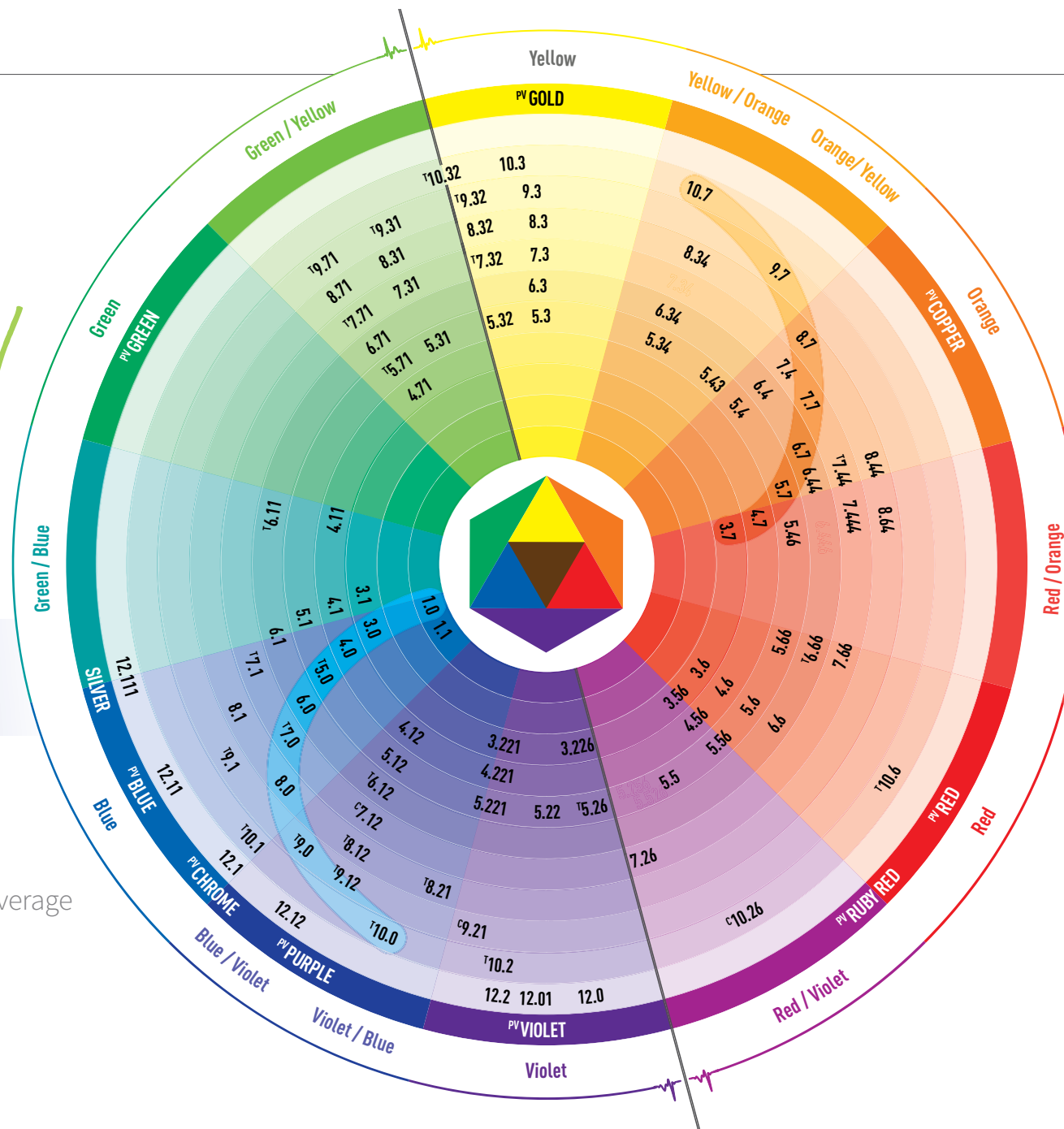
Cooler Colours

Cooler colours

100% grey Coverage

Use the .0 Natural / .00 Intense

Natural series for 100% Grey Coverage



Warmer colours
100% grey Coverage

Use the .7 Chocolate series
for 100% Grey Coverage

Warmer Colours

Client *colour history*

No matter what results you're hoping for, ask your client their colour history.

In depth consultation is key when lightening or colouring hair to achieve on target, even results.

Ask about your client's needs:

- Personality, lifestyle, career, medication
- What your client wants to achieve
- Do they want High or low maintenance
- How often they intend visiting the salon
- Products being used at home
- Time spent daily on styling and methods
- Likes or dislikes of previous visit
- Ever had skin sensitivity or a medical condition of the hair/scalp/alopecia

Ask about your client's previous colour history:

- Date of last colour
- Professional in salon Semi, Demi, Permanent colour
- Home box colour
- Do they like to change their hair colour each visit



CPR Colour

grey coverage

Cooler Colours Use .0 Natural / .00 Intense Naturals			Warmer Colours Use .7 Chocolates for Grey Coverage	
Cool Fashion	Natural	% Grey	Chocolate	Warm Fashion
Apply your cool fashion shade	Apply your .0 Natural	0-30% Mostly natural	Apply your .7 Chocolate	Apply your warm fashion shade
Mix 1-part .0 Natural + 2-parts cool fashion shade	Apply your .0 Natural	30-60% Salt & pepper	Apply your .7 Chocolate	Mix 1-part .7 Chocolate + 3-parts warm fashion shade
Mix 1-part .00 Intense Natural + 1-part cool fashion shade	Apply your .00 Intense Natural	60-100% Mostly grey	Apply your .7 Chocolate (1-Level darker)	Mix 1-part .7 Chocolate (1-Level darker) + 3-parts warm fashion shade

Cool or Warm

Cool: Use .0 Naturals or .00 Intense Naturals as your base

Warm: Use .7 Chocolates as your base

Natural / Chocolate or Fashion

Is the result you want to achieve a natural / chocolate result or a Fashion result.

% of Grey

0% - 30% Mostly natural hair

30% - 60% Salt & pepper hair

60% - 100% Mostly Grey (white) hair

Developer Strength

20vol-6% For standard Grey coverage

10vol-3% For Grey coverage results on fine hair or blended results on normal hair

Application Method

Regrowth Application

Virgin Application

Resistant Grey Coverage

CPR Colour

grey coverage

1. Cool or Warm
2. Natural or Fashion
3. % of Grey
4. Developer Strength
5. Application Method



grey coverage

Cool or Warm

- Cool: Use .0 Naturals or .00 Intense Naturals as your base
- Warm: Use .7 Chocolates as your base

Cooler Colours

Use .0 Natural / .00 Intense Naturals

Warmer Colours

Use .7 Chocolates for Grey Coverage

Cool Fashion	Natural	Chocolate	Warm Fashion
Apply your cool fashion shade	Apply your .0 Natural	Apply your .7 Chocolate	Apply your warm fashion shade
Mix 1-part .0 Natural + 2-parts cool fashion shade	Apply your .0 Natural	Apply your .7 Chocolate	Mix 1-part .7 Chocolate + 3-parts warm fashion shade
Mix 1-part .00 Intense Natural + 1-part cool fashion shade	Apply your .00 Intense Natural	Apply your .7 Chocolate (1-Level darker)	Mix 1-part .7 Chocolate (1-Level darker) + 3-parts warm fashion shade

60-100% Mostly grey

grey coverage

Natural /
Chocolate
or Fashion

Is the result you want to achieve a natural / chocolate result or a Fashion result.


Cooler Colours Use .0 Natural / .00 Intense Naturals			Warmer Colours Use .7 Chocolates for Grey Coverage	
Cool Fashion	Natural	% Grey	Chocolate	Warm Fashion
Apply your cool fashion shade eg .1	Apply your natural .0 / .00	0-30% Mostly natural	Apply your chocolate .7	Apply your warm fashion shade eg .6
Mix 1-part .0 Natural + 2-parts cool fashion shade	Apply your .0 Natural	30-60% Salt & pepper	Apply your .7 Chocolate	Mix 1-part .7 Chocolate + 3-parts warm fashion shade
Mix 1-part .00 Intense Natural + 1-part cool fashion shade	Apply your .00 Intense Natural	60-100% Mostly grey	Apply your .7 Chocolate (1-Level darker)	Mix 1-part .7 Chocolate (1-Level darker) + 3-parts warm fashion shade

CPR Colour

grey coverage

% of Grey

- 0% - 30% Mostly natural hair
- 30% - 60% Salt & pepper hair
- 60% - 100% Mostly Grey (white) hair

Cooler Colours Use .0 Natural / .00 Intense Naturals			Warmer Colours Use .7 Chocolates for Grey Coverage	
Cool Fashion	Natural	% Grey	Chocolate	Warm Fashion
Apply your cool fashion shade	Apply your .0 Natural	0-30% Mostly natural		Apply your warm fashion shade
Mix 1-part .0 Natural + 2-parts cool fashion shade	Apply your .0 Natural	30-60% Salt & pepper		Mix 1-part .7 Chocolate + 3-parts warm fashion shade
Mix 1-part .00 Intense Natural + 1-part cool fashion shade	Apply your .00 Intense Natural	60-100% Mostly grey		Mix 1-part .7 Chocolate (1-Level darker) + 3-parts warm fashion shade

grey coverage

Developer Strength

After determining which formula to follow, select the appropriate developer for your formulation

20vol-6% For standard Grey coverage

10vol-3% For Grey coverage results on fine hair or blended results on normal hair

Cooler Colours Use .0 Natural / .00 Intense Naturals			Warmer Colours Use .7 Chocolates for Grey Coverage	
Cool Fashion	Natural	% Grey	Chocolate	Warm Fashion
Apply your cool fashion shade	Apply your .0 Natural	0-30% Mostly natural	Apply your .7 Chocolate	Apply your warm fashion shade
Mix 1-part .0 Natural + 2-parts cool fashion shade	Apply your .0 Natural	30-60% Salt & pepper	Apply your .7 Chocolate	Mix 1-part .7 Chocolate + 3-parts warm fashion shade
Mix 1-part .00 Intense Natural + 1-part cool fashion shade	Apply your .00 Intense Natural	60-100% Mostly grey	Apply your .7 Chocolate (1-Level darker)	Mix 1-part .7 Chocolate (1-Level darker) + 3-parts warm fashion shade

grey coverage

Application Method

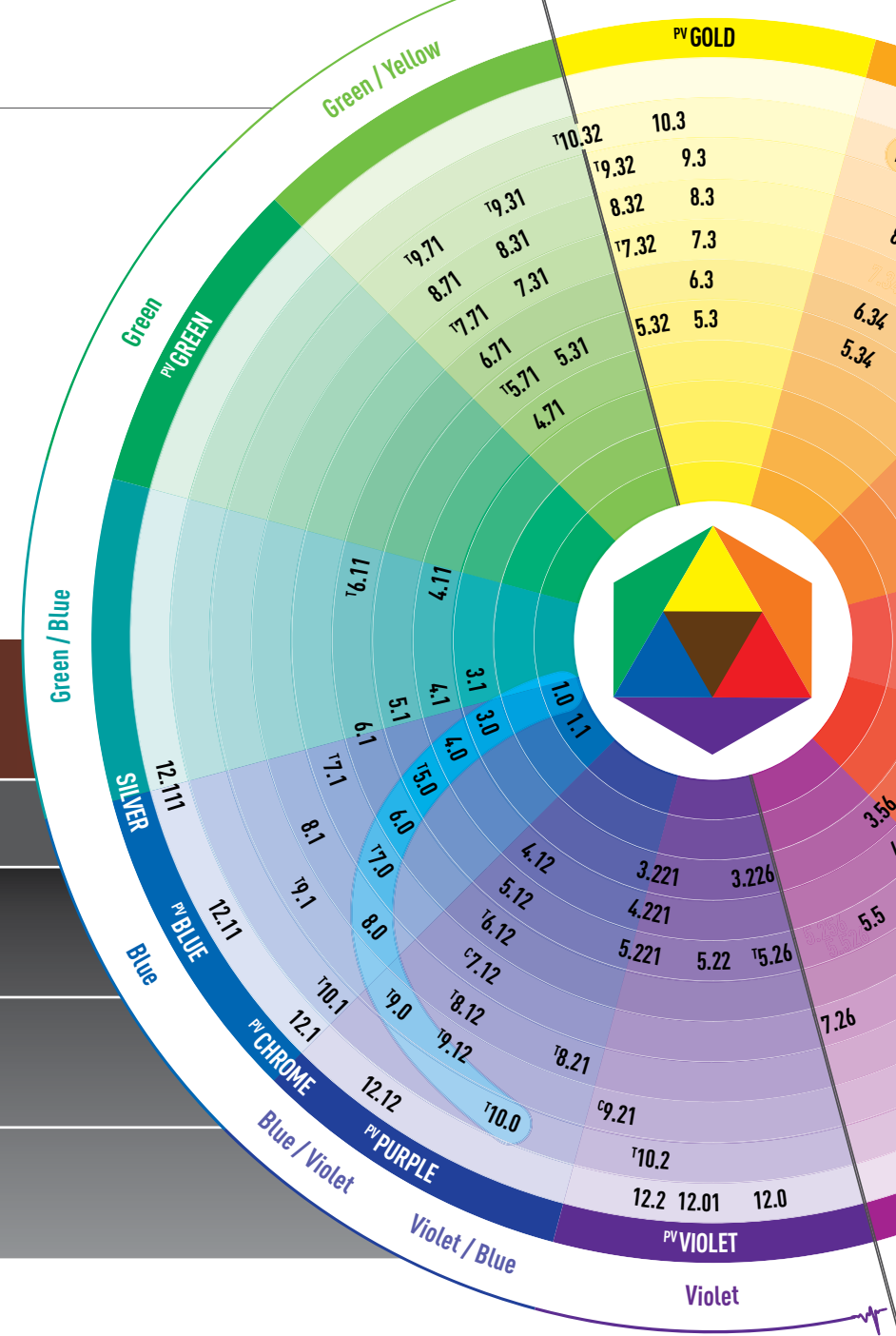
Regrowth Application
Virgin Application
Resistant Grey Coverage (*advanced*)

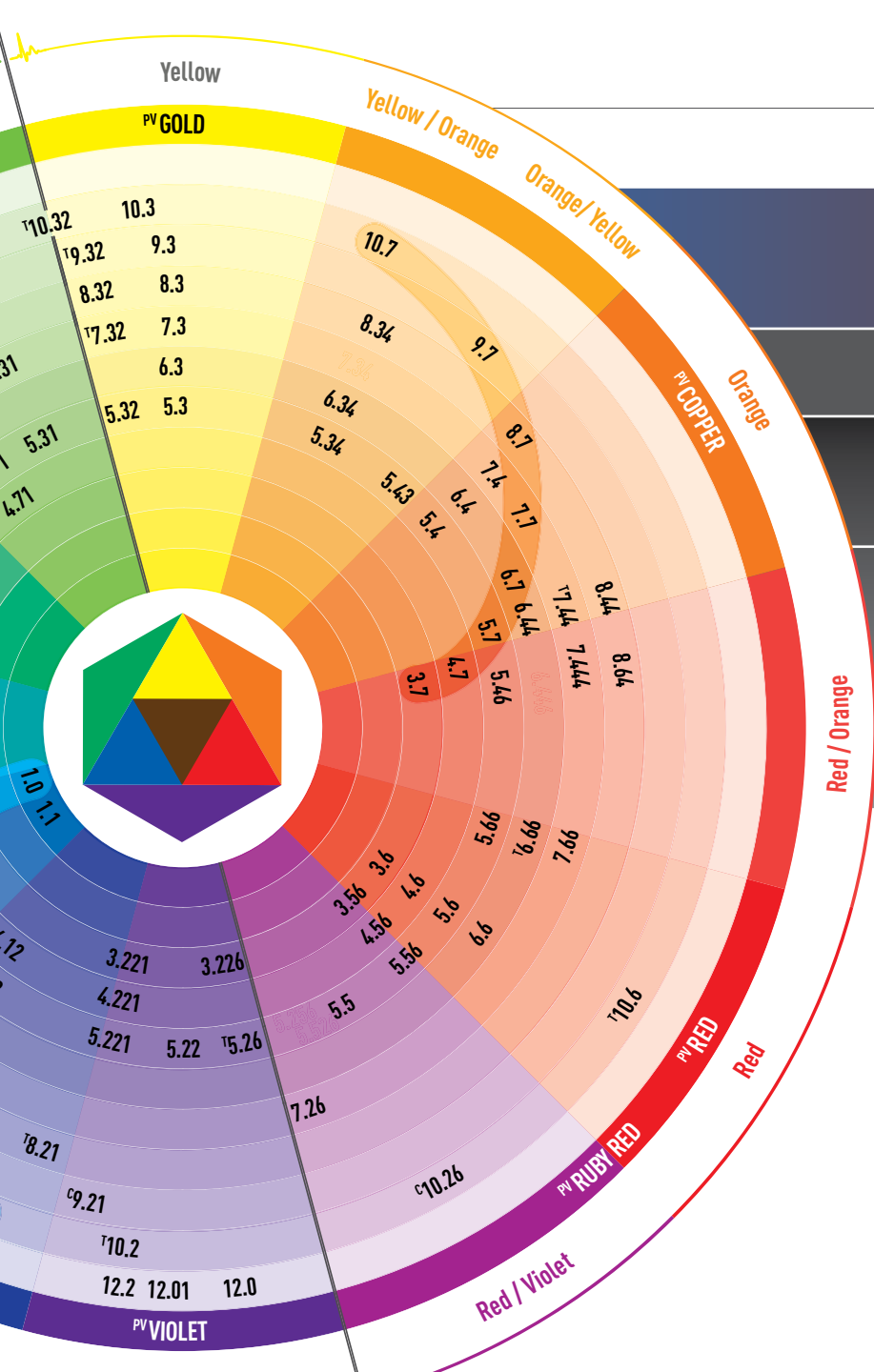
Cooler Colours Use .0 Natural / .00 Intense Naturals			Warmer Colours Use .7 Chocolates for Grey Coverage	
Cool Fashion	Natural	% Grey	Chocolate	Warm Fashion
Apply your cool fashion shade	Apply your .0 Natural	0-30% Mostly natural	Apply your .7 Chocolate	Apply your warm fashion shade
Mix 1-part .0 Natural + 2-parts cool fashion shade	Apply your .0 Natural	30-60% Salt & pepper	Apply your .7 Chocolate	Mix 1-part .7 Chocolate + 3-parts warm fashion shade
Mix 1-part .00 Intense Natural + 1-part cool fashion shade	Apply your .00 Intense Natural	60-100% Mostly grey	Apply your .7 Chocolate (1-Level darker)	Mix 1-part .7 Chocolate (1-Level darker) + 3-parts warm fashion shade

Cooler Colours

grey coverage

Cooler Colours Use .0 Natural / .00 Intense Naturals		
Cool Fashion	Natural	% Grey
Apply your cool fashion shade	Apply your .0 Natural	0-30% Mostly natural
Mix 1-part .0 Natural + 2-parts cool fashion shade	Apply your .0 Natural	30-60% Salt & pepper
Mix 1-part .00 Intense Natural + 1-part cool fashion shade	Apply your .00 Intense Natural	60-100% Mostly grey





Warmer Colours Use .0 Natural / .00 Intense Naturals		
% Grey	Chocolate	Warm Fashion
0-30% Mostly natural	Apply your .7 Chocolate	Apply your warm fashion shade
30-60% Salt & pepper	Apply your .7 Chocolate	Mix 1-part .7 Chocolate + 3-parts warm fashion shade
60-100% Mostly grey	Apply your .7 Chocolate (1-Level darker)	Mix 1-part .7 Chocolate (1-Level darker) + 3-parts warm fashion shade

Warmer Colours
grey coverage

Standard

grey coverage

Ratio

1+1
+10%

20g



+ 20g

Add 10%
Colour Advantage

+ 4g (10%)

Regrowth Application

- 01** | **Prep:** Spray CPR Colour Prep on regrowth area
- 02** | **Ratio:** 1:1 *with 10vol-3% or 20vol-6%*
Mix: CPR Colour + Developer
+ 10% Colour Advantage
- 03** | **Apply:** target colour to regrowth (1-1.5cm)
Process: 35 - 45 minutes (17 - 22 minutes with gentle heat)
- 04** | **Finish:** emulsify + rinse + CPR post colour service

Virgin Application

- 01** | **Prep:** Spray CPR Colour Prep from roots to ends
- 02** | **Ratio:** 1:1 *with 10vol-3% or 20vol-6%*
Mix: CPR Colour + Developer + 10% Colour Advantage
- 03** | **Apply:** leave 1-1.5cm from scalp (regrowth) mid-lengths to ends
Process: 10 minutes (no heat)
- 04** | **Apply:** fresh CPR Colour mix to scalp
Process: 35 minutes (17 minutes with gentle heat)
- 05** | **Finish:** emulsify + rinse + CPR post colour service

CPR Colour

high lift blondes

Natural Level of Depth

Remove the .0 Natural / .00 Intense Natural page from the CPR Colour Chart & hold against your client's hair to determine your clients level of depth.

Toning Reflect Required

The High-lift Blondes swatches in the CPR Colour Chart show the toning reflect, not end result. **eg:** CPR 12.0 has minimal tone, whereas CPR 12.111 has maximum tone. For additional lift & tone add CPR SILVER to your High-lift blonde colour mix.

HL High-Lift Blondes

	Toning Reflect
	12.0 High-Lift Natural Blonde Lightest Violet
	12.01 High-Lift Natural Ash Blonde Light Violet
	12.2 High-Lift Violet Blonde Violet
	12.12 High-Lift Ash Violet Blonde Blue / Violet
	12.1 High-Lift Ash Blonde Light Blue
	12.11 High-Lift Intense Ash Blonde Blue
	12.111 High-Lift Extra Ash Blonde Blue / Green
CPR SILVER is a 'Lift & Tone' additive that increases lifting ability & toning reflect of your High-Lift Blonde colour mix. Do not add extra developer.	
	SILVER Lift & Tone Silver Additive Add 10% Increases tone for a cooler result Add 25% Extra ½ level of lift & increases tone

Guidelines

high lift blondes

Ratio

1+2
+10%

20g



+ 40g

Add 10%
Colour Advantage

+ 6g (10%)



Regrowth Application

- 01** | **Prep:** Spray CPR Colour Prep evenly throughout hair
- 02** | **Ratio:** 1:2 with 30vol-9% or 40vol-12%
Mix: CPR High-lift + Developer + 10% Colour Advantage
- 03** | **Apply:** colour to regrowth (1-1.5 cm)
Process: 50 - 60 minutes (25 - 30 minutes with gentle heat)
- 04** | **Finish:** emulsify + rinse + CPR post colour service

Virgin Application

- 01** | **Prep:** Spray CPR Colour Prep evenly throughout hair
- 02** | **Ratio:** 1:2 with 30vol-9% or 40vol-12%
Mix: CPR High-lift + Developer + 10% Colour Advantage
- 03** | **Apply:** colour mix to mid-lengths & ends leaving approximately 1-1.5cm of the root area untouched.
Process: 15 minutes (7 minutes with gentle heat)
- 04** | **Mix & Apply:** a fresh High-lift colour mix & apply to the roots
Process: 50-60 minutes (25-30 minutes with gentle heat)
- 05** | **Finish:** emulsify + rinse + CPR post colour service

CPR SILVER

highlift additive

Extra Lift + Tone additive that increases lifting ability & toning reflect of your High-Lift Blonde colour mix. Add between 10% to 25%. Do not add extra developer.

10%**Increase tone for a cooler result**

eg: 20g 12.12 + 2g SILVER + 40g 40vol-12%
+ 6.2g CPR Colour Advantage (10%)

25%**Extra 1/2 level of lift with additional toning for a cooler blonde result**

eg: 20g 12.111 + 5g SILVER + 40g 40vol-12%
+ 6.5g CPR Colour Advantage (10%)



CPR SILVER is a 'Lift & Tone' additive that increases lifting ability & toning reflect of your High-Lift Blonde colour mix. Do not add extra developer.

SILVER

Lift & Tone
Silver Additive

Add 10% Increases tone
for a cooler result

Add 25% Extra 1/2 level of lift
& increases tone

*High-lift Blonde additive only.
Not for use with toning formulations.*

CPR Colour *additives*

CPR .000 **Clear gloss**

- Pastelise any CPR Colour
- Use on its own as an In-salon gloss treatment

CPR BOOST **Colour lightening booster**

- Boost the lifting ability of WARM fashion reflects. Dilutes reflect. Not recommended for High-Lift Blonde formulations.
- Lighten natural colour, break through artificial colour or assists in the removal of direct dye pigments.

.000
Clear Gloss

BOOST
Colour Lightening
Booster



CPR .000

clear gloss

Beautiful pastel colours

As CPR Colour is a hybrid colour system, you can pastelise any colour by adding CPR .000 Clear Gloss to the colour mix.

It is essential to pre-lighten your client's hair to the ideal level, remembering that any underlying pigment left in the hair will contribute to the final result.

Ratio

1+1
+10%



20g



+ 20g

Add 10%
Colour
Advantage



+ 4g (10%)

- 01** | Pre-lighten your client's hair to the ideal level
- 02** | **Prep:** Spray CPR Colour Prep from roots to ends
- 03** | **Create your CPR pastel colour mix:**
5g CPR fashion shade + 25g .000 Clear Gloss
+ 30g Developer + 6g Colour Advantage (10%)
- 04** | **Apply:** pastel colour mix to pre-lightened hair.
Process: Visually (not recommended with heat).
- 05** | **Finish:** emulsify + rinse + CPR post colour service

CPR .000 *clear gloss*

In-salon gloss treatment

You can also use .000 Clear Gloss to add shine to existing colour without adding depth.

Ratio

1+1+1
+10%



20g



+ 20g



+ 20g

Add 10%
Colour
Advantage



+ 6g (10%)

01

Shampoo hair using CPR Detox Shampoo
Rinse & Towel dry hair

02

Prep: Spray CPR Colour Prep from roots to ends

03

Create your CPR .000 Clear Gloss treatment:

20g CPR .000 + 20g 5vol-1.5% + 20g Colour Secure
+ 6g Colour Advantage (10%)

04

Apply: To the target area.

Process: 20 minutes (10 mins with gentle heat*).

05

Finish: emulsify + rinse + CPR post colour service

CPR BOOST

lightening booster

Boost the lifting ability of WARM fashion reflects.

The strength of developer, hair texture & porosity will affect levels of lift. When adding BOOST, add the same amount of Pure Vibrants to maintain the intensity of the fashion reflect. Note: If using more than 25% CPR Pure Vibrants in your colour mix, add extra developer for increased colour spreadability.

Add
25%

Target Colour: 20g 5.66
Additives: + 5g BOOST + 5g RED
Mix 1+1: + 25g Developer
Advantage: + 5.5g Colour Advantage (10%)

Add
50%

Target Colour: 10g 7.444
Additives: + 5g BOOST + 5g COPPER
Mix 1+1: + 20g Developer
Advantage: + 4g Colour Advantage (10%)



CPR BOOST

lightening booster

Lightens natural colour, breaks through artificial colour & assists in removal of direct dye pigments.

Note: If removing artificial colour or direct dye, conduct a test strand before proceeding.

Ratio

1+2
+10%



20g



+ 40g

Add 10%
Colour
Advantage



+ 6g (10%)

01

Shampoo hair using CPR Detox Shampoo
Rinse & Towel dry hair

02

Prep: Spray CPR Colour Prep from roots to ends

03

Create your CPR BOOST mix:

20g BOOST + 40g Developer
+ 6g Colour Advantage (10%)

04

Apply: To the target area.

Process: Visually (not recommended with heat).

05

Finish: emulsify + rinse + CPR post colour service

CPR Colour

toning theory

Underlying Pigments

Whether staying on level or lightening, remember that the underlying pigments within hair will contribute to your final colour result.

For example: If you lighten hair from a level 5 to level 8, the underlying pigment left in the hair will be Yellow/Orange. Where as, If you lighten to a level 9, the underlying pigment left in hair will be pale Yellow.



Natural level of depth		Underlying pigments
10	Lightest Blonde	Palest Yellow
9	Very Light Blonde	Pale Yellow
8	Light Blonde	Yellow Orange
7	Blonde	Orange Yellow
6	Dark Blonde	Orange
5	Light Brown	Red Orange
1-4	Black to Brown	Red

CPR Colour *toning theory*

Colour Wheel Theory:

Colours that are opposite each other on the colour wheel neutralise and counteract each other. When colours not opposite to each other are combined, they form a colour between them.

The CPR Colour wheel shows the location of each colour making it easy to select the perfect shade for your toning formulations.



CPR Colour *toning theory*

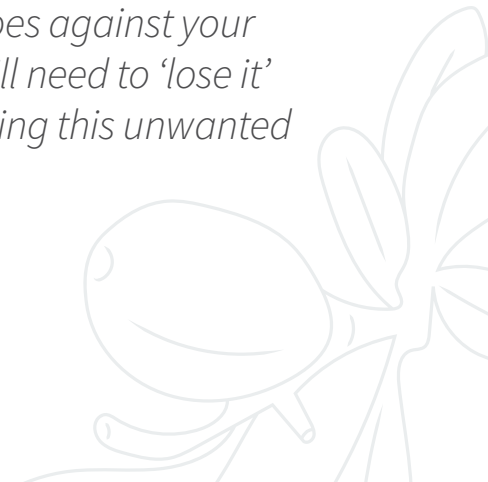
Use it or lose it:

When deciding what to do with the underlying pigment left in the hair, many colourists use the terms “Use it” or “Lose it.”



The warmth of the underlying pigment compliments & supports your target end result, so you can ‘Use it’ to your advantage.

The underlying pigment goes against your target end result, so you will need to ‘lose it’ by neutralising/counteracting this unwanted warmth.



CPR Colour

toning formulations

With 5vol-1.5% Developer

CPR Colour is a hybrid colour system so every colour can be used as a toner formulation making it easy to:

- Neutralise & counteract unwanted reflects
- Add a fashion reflect to your final colour results

Toning highly porous hair: we recommend creating your toning formulation using a Semi Colour Mix or using the T Ammonia-free toners. Processing time is visual and not recommended with heat.

Faster toning

Ratio

1+1
+10%



20g

5vol-1.5%



+ 20g

Visual timing

Add 10%
Colour
Advantage



+ 4g (10%)

Slower toning

Ratio

1+2
+10%



20g

5vol-1.5%



+ 40g

Visual timing

Add 10%
Colour
Advantage



+ 6g (10%)

CPR Toners

hybrid or ammonia-free

Hybrid Toners

Multiple ways to use from hard to tone/resistant hair and “breaking base” for soft regrowth result. Plus saves on space!

Ammonia Free T Toners

Ammonia Free T Toners are an alternative to our hybrid colour system used for deposit only (no lift) perfect for toning after lightening services. Is comfortable and gentle on application and has a pleasant ammonia free fresh fragrance.



CPR Fast Lift *powder lightener*



Fast lift 8 White

Superior conditioning properties for controlled lifting.
Ideal for fine, medium or sensitised hair

- Mixing ratio 1:3 for creamy consistency
- Can be used with 5vol-1.5%, 10vol-3%, 20vol-6% or 30vol-9%.
- Use as part of the colour lightening bath.

natural technology

Keratin Protein, Argan Oil & Chamomile

Fast lift 9 Blue

Superior lifting power for strong, medium to coarse and dark hair types. Faster lifting results.

- Mixing ratio 1:2 for creamy consistency
- Can be used with 5vol-1.5%, 10vol-3%, 20vol-6%

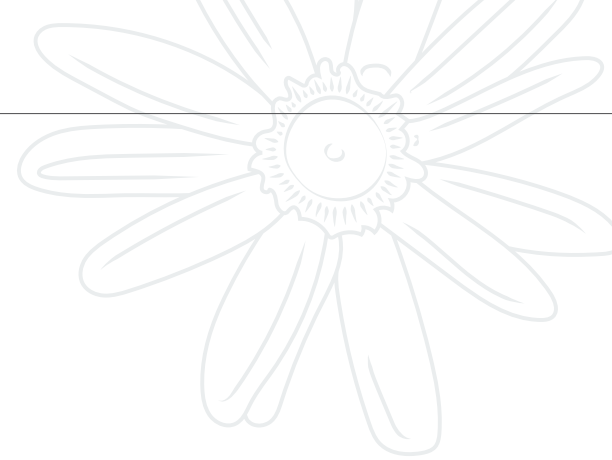
natural technology

Quinoa Protein, Argan Oil



CPR Fast Lift

powder lightener



Mixing Ratio

Application & Developer

Timing

**Fast lift 8** White

Superior conditioning properties for controlled lifting.
Ideal for fine, medium or sensitised hair

1+3 Add 10%
Colour Advantage**On Scalp** - up to 20vol-6%**Off Scalp** - up to 30vol-9%**Visual timing**
up to 50 mins***Fast lift 9** Blue

Superior lifting power for strong, medium to coarse
and dark hair types. Faster lifting results.

1+2 Add 10%
Colour Advantage**On Scalp** - up to 20vol-6%**Off Scalp** - up to 20vol-6%**Not recommended**
with heat

**Always conduct a thorough client consultation & analysis & apply your professional knowledge to determine the most suitable developer strength & processing times.
Note: If removing artificial colour or direct dye, conduct a test strand before proceeding.*

CPR Colour

lightening bath

A colour lightening bath is a gentle and effective method of removing existing colour and buildup, correcting over-toned hair or gently lightening fragile hair.

Ratio

1+1+1
+10%



20g



+ 20g



+ 20g

Add 10%
Colour Advantage



+ 6g (10%)

01

Prep: Spray CPR Colour Prep from roots to ends

02

Create your Colour Lightening Bath formula:

20g Fast Lift 8 white + 20g Developer + 20g Detox
+ 6g Colour Advantage (10%)

03

Apply: At the basin, whilst wearing gloves, apply mixture to hair. Gently work through the target area, avoiding contact with your client's scalp.

Process: Visually until desired result is achieved.

04

Finish: Rinse thoroughly & lightly cleanse hair using a suitable CPR Shampoo, rinse. Follow with CPR Colour Secure, rinse & towel dry.