



enterprise
socialise
realise

Report for Eastbourne Chamber of Commerce

Analyzed form : Market Research

September 24, 2021

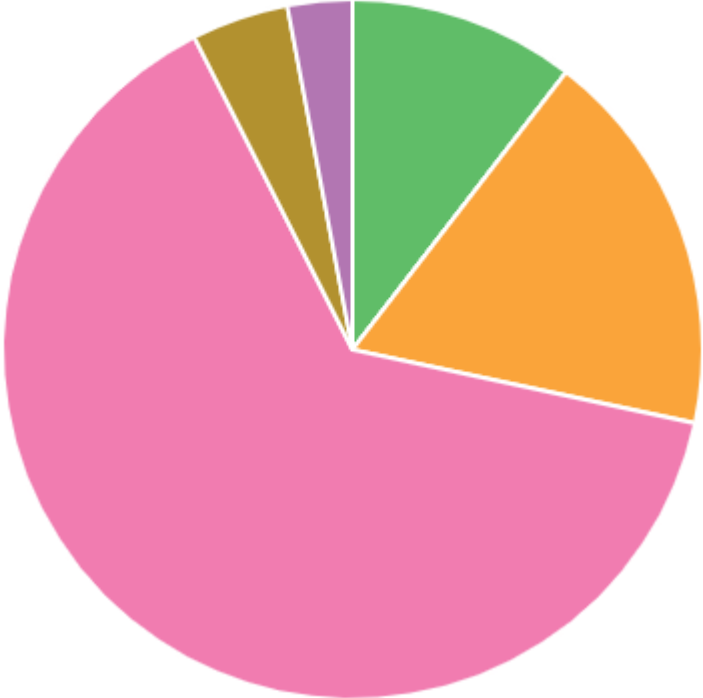
Satisfaction level : **84%**

Net promoter score : **47**

How did you first hear about Eastbourne *unLtd* Chamber of Commerce?

67 Answers (Multiple answers)

- 7 Online - either via website or social media (10%)
- 0 Via advertisements
- 12 From another member (18%)
- 43 Local knowledge (64%)
- 3 From another Chamber (4%)
- 2 Other (3%)

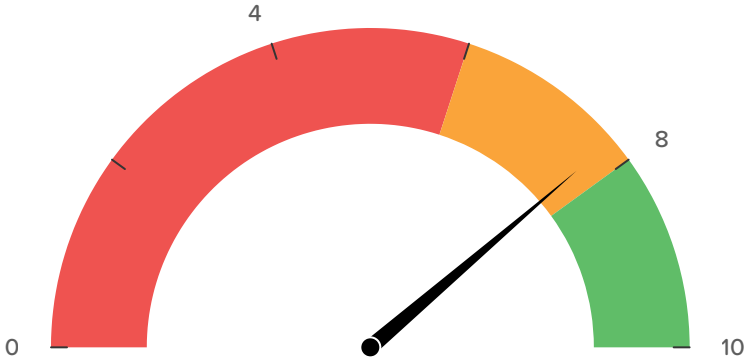


How important are the following to you as a member of Eastbourne
unLtd?

The ability to network with other businesses in Eastbourne

64 Answers (Scale questions group)

7.9

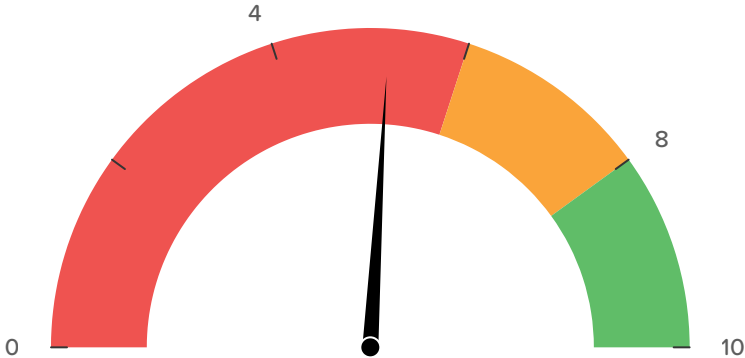


How important are the following to you as a member of Eastbourne
unLtd?

Access to business support, training and workshops

64 Answers (Scale questions group)

5.3

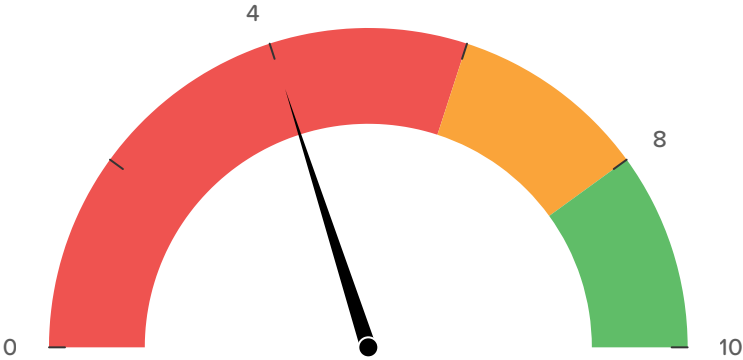


How important are the following to you as a member of Eastbourne
unLtd?

Member to Member offers

64 Answers (Scale questions group)

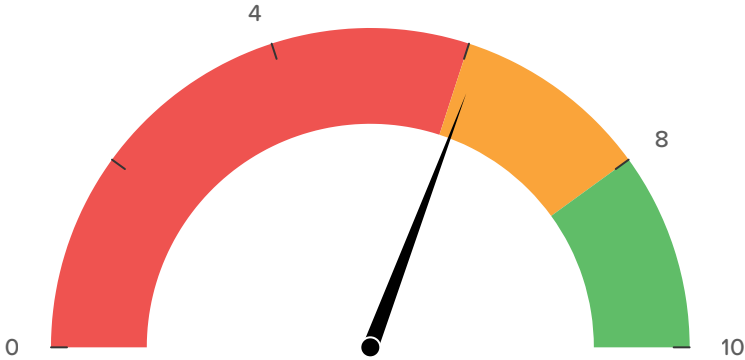
4.1



How important are the following to you as a member of Eastbourne
unLtd?

*** Representation to Local, Regional and National Government**
64 Answers (Scale questions group)

6.3

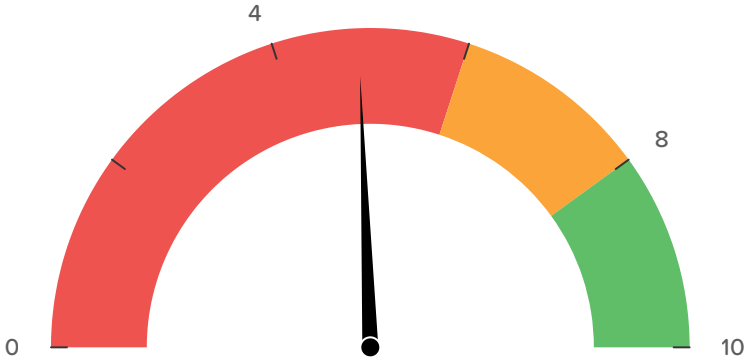


How important are the following to you as a member of Eastbourne
unLtd?

Your own web page on the Chamber website

64 Answers (Scale questions group)

5

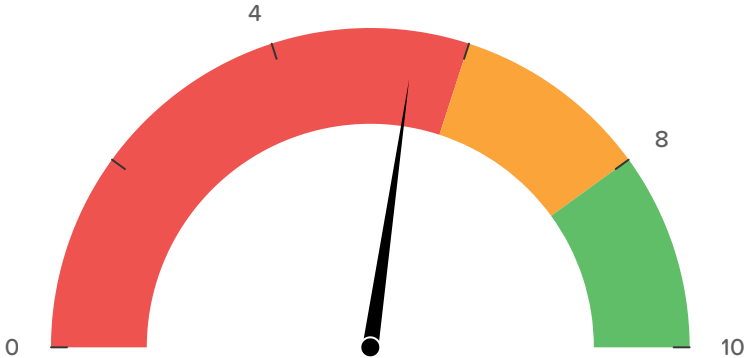


How important are the following to you as a member of Eastbourne
unLtd?

Social media links, Twitter and LinkedIn Groups

64 Answers (Scale questions group)

5.6

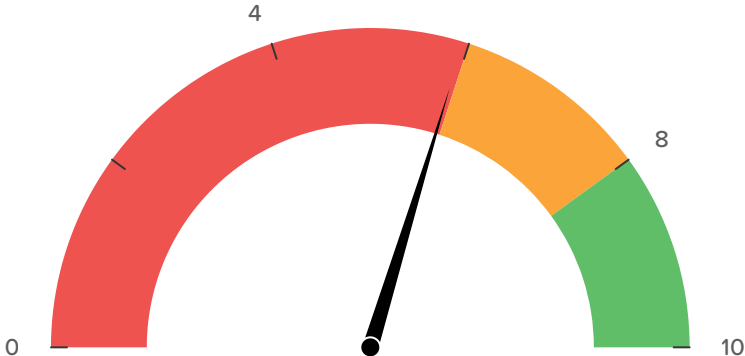


How important are the following to you as a member of Eastbourne
unLtd?

Access to free PR in Business Publications

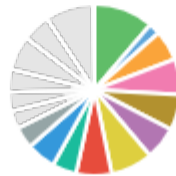
64 Answers (Scale questions group)

6.1



What do you like about being part of Eastbourne *unLtd*?

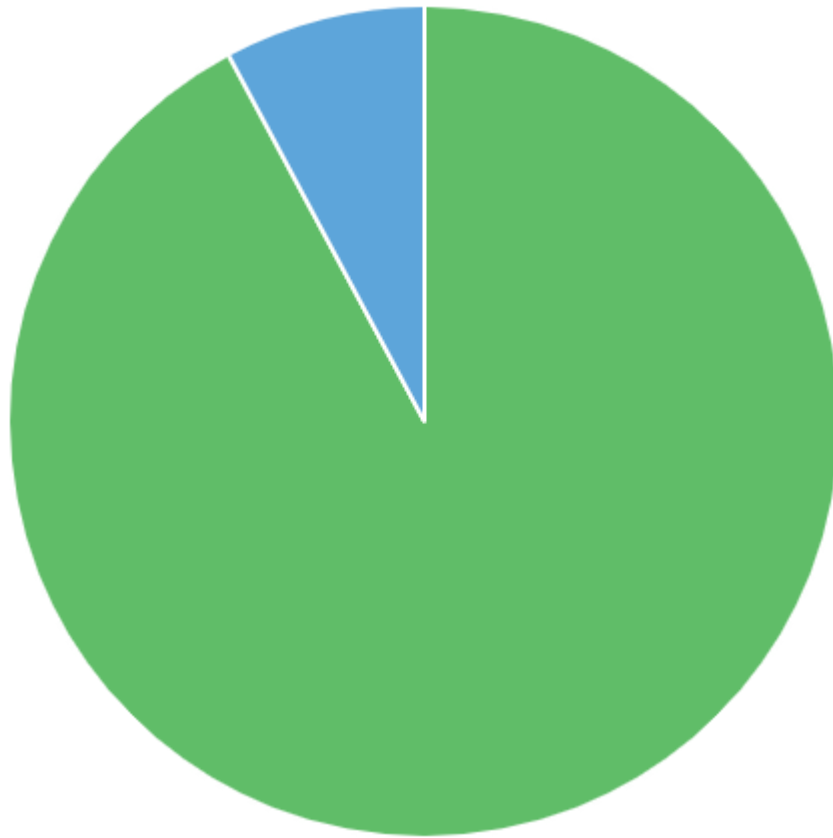
417 Answers (Multiple answers)



Is Eastbourne *unLtd* good value for money?

64 Answers (Multiple choice)

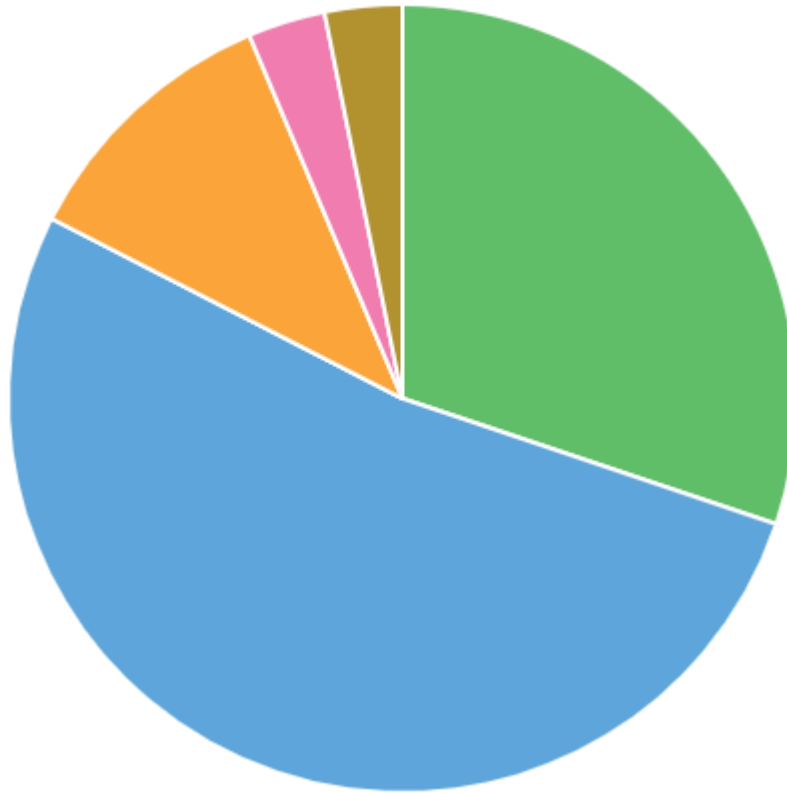
59 Yes (92%) 5 No (8%)



Do you read our e-mailshots?

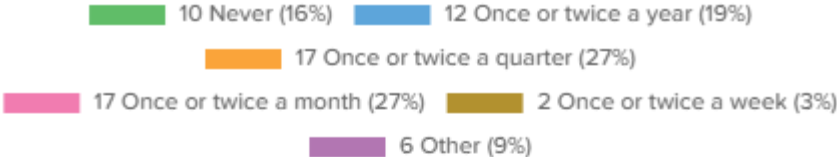
63 Answers (Multiple choice)

19 Every time (30%) 33 Often (52%)
7 Sometimes (11%) 2 Never (3%) 2 Other (3%)



How often do you come to our events?

64 Answers (Multiple choice)

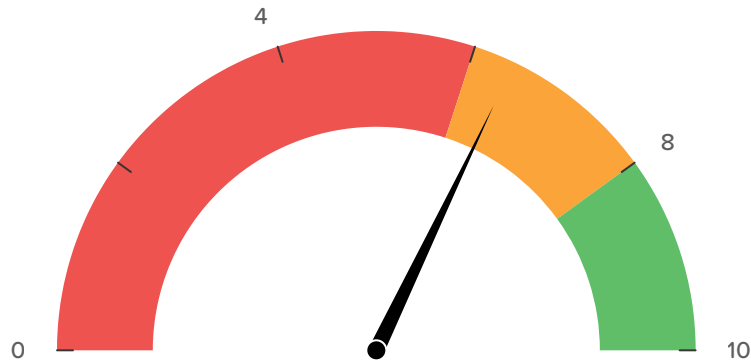


How interested would you be in attending the following events?

Networking Breakfast

60 Answers (Scale questions group)

6.6

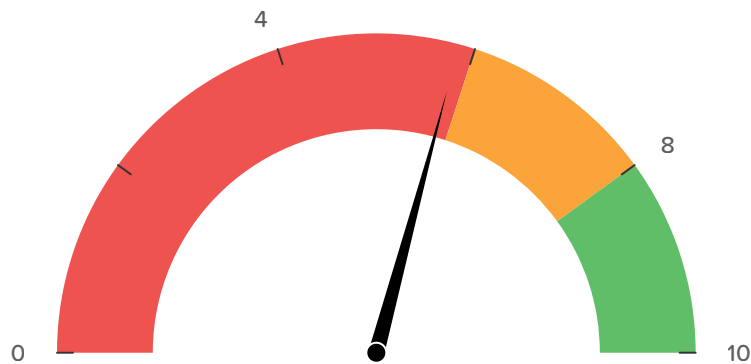


How interested would you be in attending the following events?

Like Minded Lunches (sector specific)

56 Answers (Scale questions group)

6

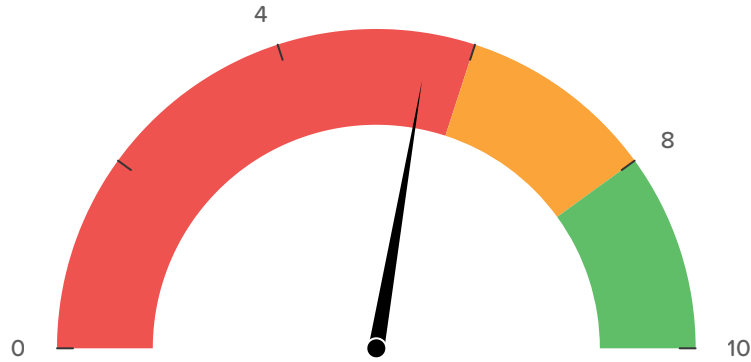


How interested would you be in attending the following events?

General Lunches

57 Answers (Scale questions group)

5.7

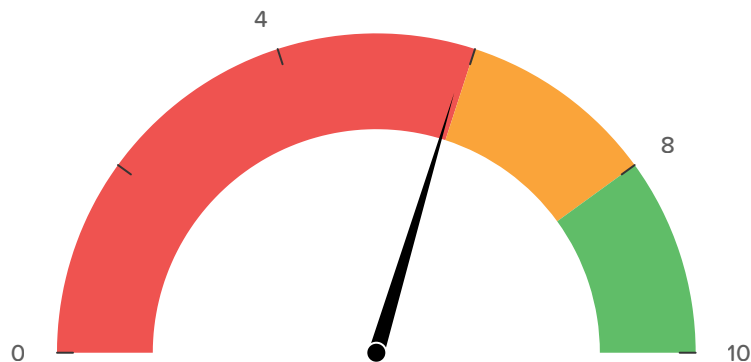


How interested would you be in attending the following events?

Airbourne Lunch

55 Answers (Scale questions group)

6.1

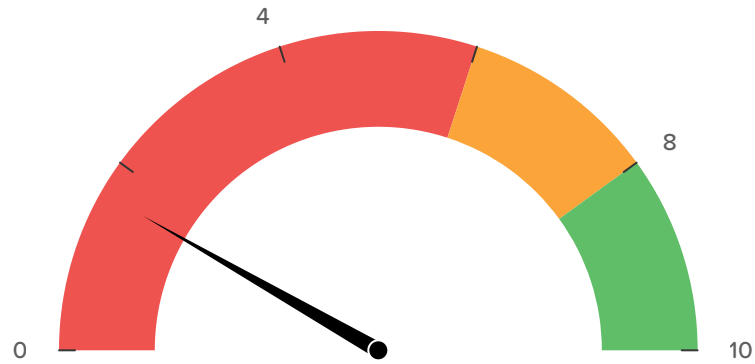


How interested would you be in attending the following events?

Golf Day

50 Answers (Scale questions group)

1.7

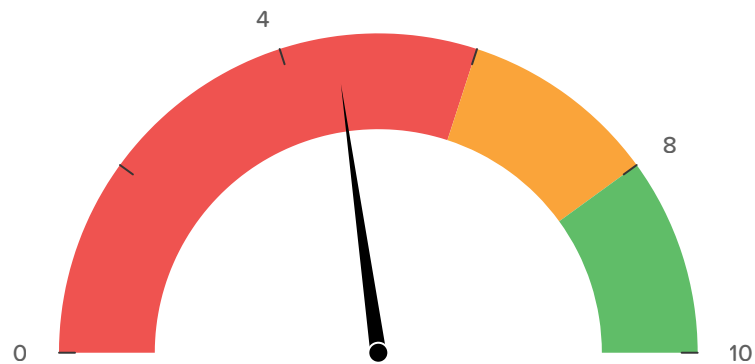


How interested would you be in attending the following events?

BBQ and Croquet Event

55 Answers (Scale questions group)

4.7

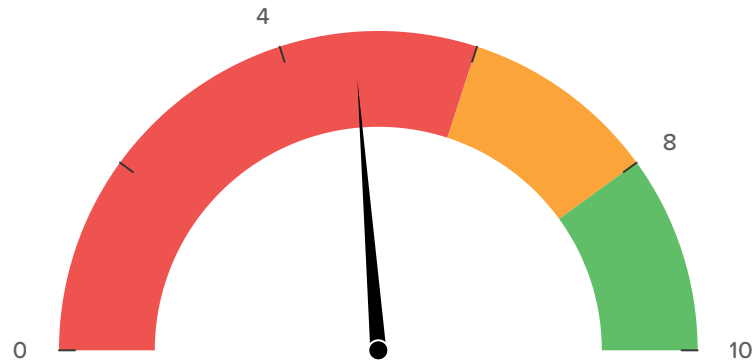


How interested would you be in attending the following events?

Afternoon Tea

52 Answers (Scale questions group)

4.9

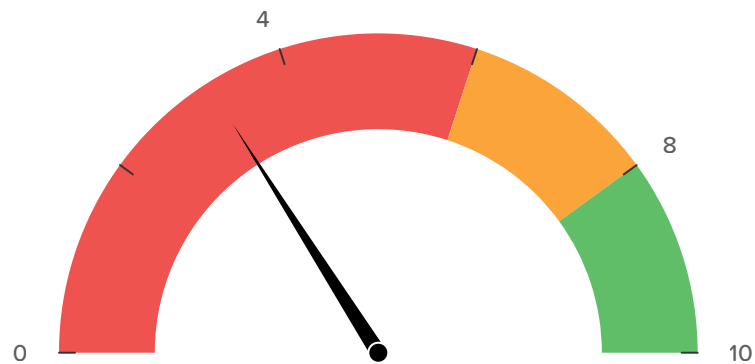


How interested would you be in attending the following events?

Pimms and Prosecco Pool Party

50 Answers (Scale questions group)

3.3

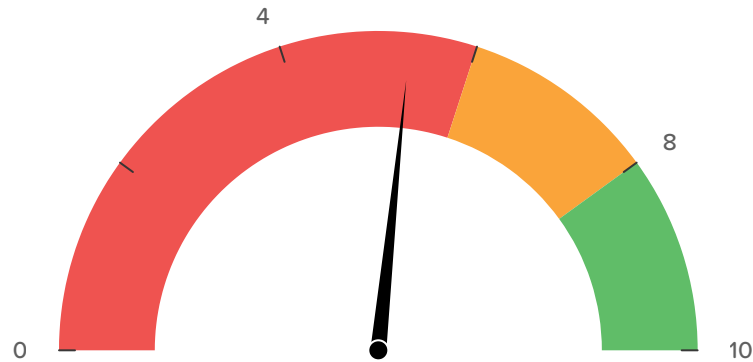


How interested would you be in attending the following events?

MP's Parliametary Visit

58 Answers (Scale questions group)

5.5

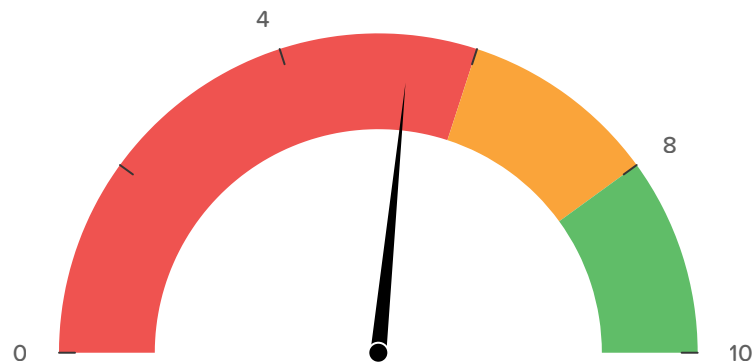


How interested would you be in attending the following events?

Online Networking Meetings

56 Answers (Scale questions group)

5.5

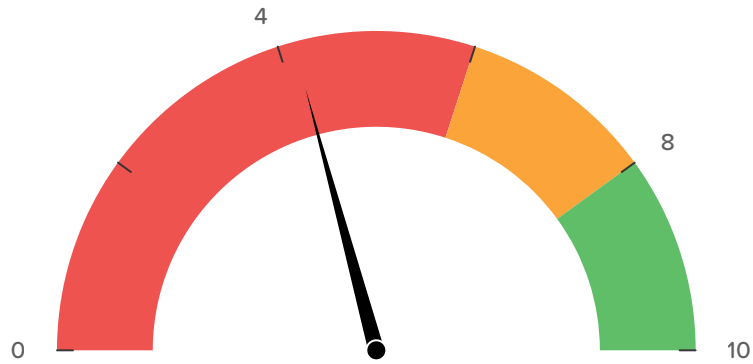


How interested would you be in attending the following events?

Cocktail making event

54 Answers (Scale questions group)

4.3



Click on all the other Chamber activities you are aware of

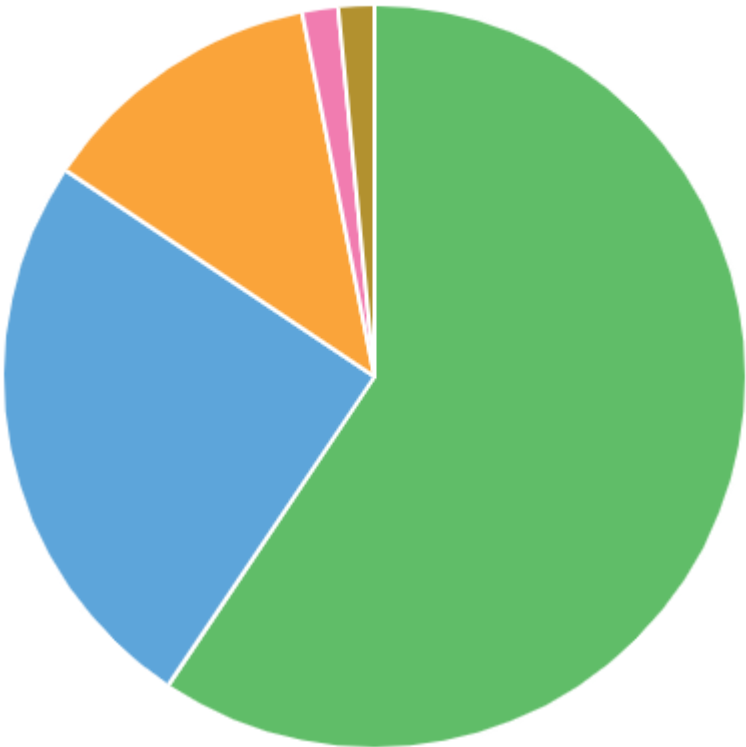
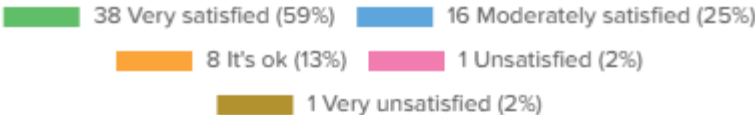
184 Answers (Multiple answers)

- 30 The COBRA / Covid monthly meetings (16%)
- 21 Regular Alliance of Chambers in East Sussex meetings (11%)
- 10 Skills East Sussex meetings (5%)
- 22 Regular meetings with Wealden, Lewes & Eastbourne Councils (12%)
- 16 Bank of England meetings (9%)
- 22 Regular meetings with ESCC (12%)
- 27 Business Improvement District meetings (15%)
- 26 Local Enterprise Partnership meetings (14%)
- 10 Please tell me more (5%)



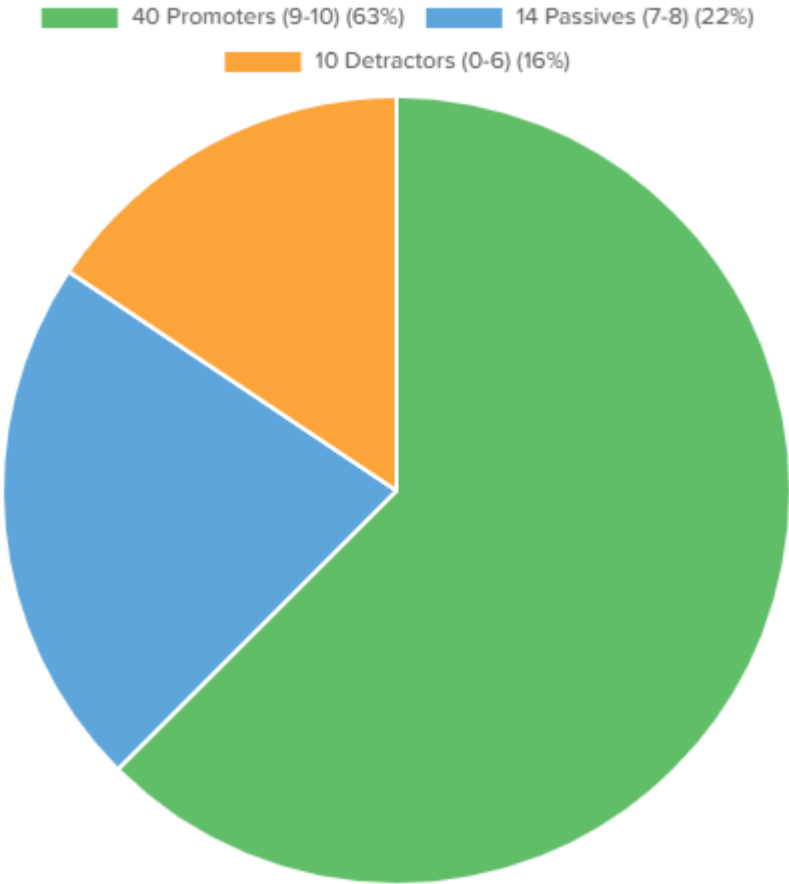
Overall, how satisfied are you with Eastbourne *unLtd*?

64 Answers (Multiple choice)



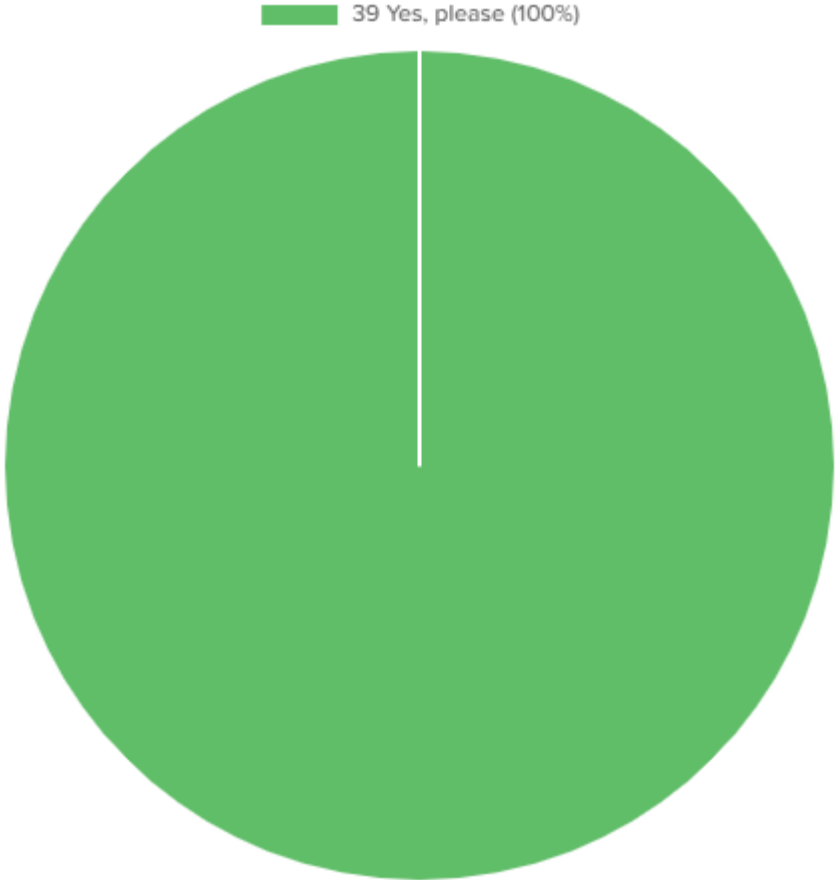
How likely is it that you would recommend Eastbourne *unLtd* to a friend or colleague?

64 Answers (NPS)



Would you like a copy of our market research report?

39 Answers (Multiple choice)



Dissatisfaction questions

Could we contact you to talk more about the issues you have raised? (Multiple choice)

8 Answers

3 Email (confirm email) (38%) 0 Phone (confirm phone)
5 Not not, thank you (63%)

